



Achieving Health Equity and Environmental Justice

Community Vitality and Safety Committee
September 28, 2023

Jacques Colon, Chief Strategy Officer, City of Tacoma
Naomi Wilson, Health Assessment Director, Tacoma-Pierce County Health Department



1

Agenda



- Define Health Equity and Environmental Justice
- Show Health Metrics used to track progress:
 - Equity Index
 - Climate Action Plan
 - Health Equity Assessment
 - Community Health Assessment/ Improvement Plan

2

2

What is Health Equity/ Environmental Justice

Health Equity

- Health *disparities* are any differences in the presence of disease, health outcomes, or access to health care between population groups.
- Health *inequities* are those differences in health that are unnecessary, avoidable, unfair and unjust.
- Health equity means that everyone has a fair opportunity to live a long, healthy life. It implies that health should not be compromised or disadvantaged because of an individual or population group's race, ethnicity, gender, income, sexual orientation, neighborhood, or other social condition.
- Health equity means that there are fair opportunities for health across places and across different population groups.

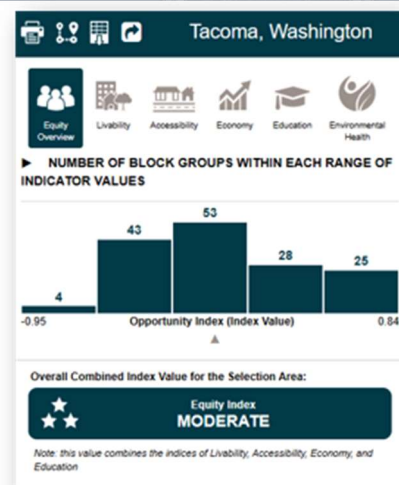
Environmental Justice

- Environmental justice (EJ) is the fair treatment and meaningful involvement of all people regardless of race, color, national origin, or income with respect to the development, implementation and enforcement of environmental laws, regulations and policies.
- Fair treatment means no group of people should bear a disproportionate share of the negative environmental consequences resulting from industrial, governmental and commercial operations or policies. 3

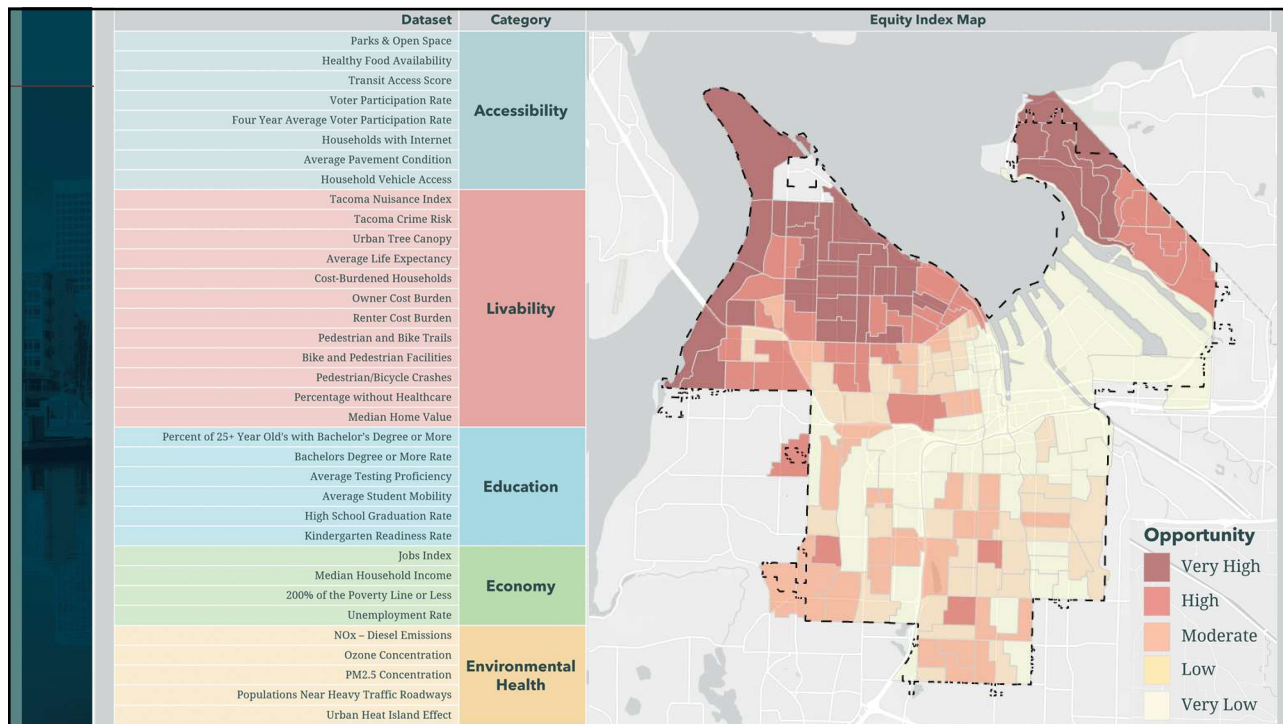
3

What is the Equity Index?

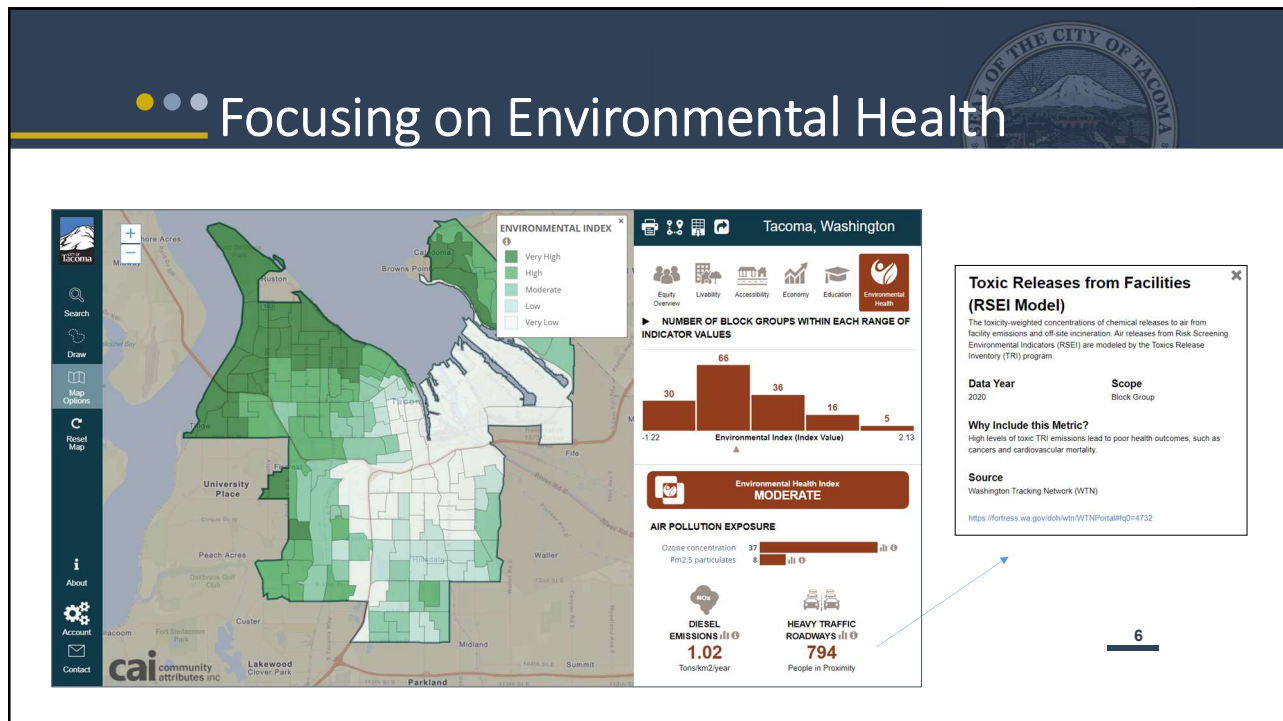
- 32 Indicators by Determinant Categories
- 154 Scored Census Blocks (City index)
- 5 Equally Weighted Determinant Categories based on our strategic priorities
- Population demographic overlays
- Visually highlights disparities
- One tool in the toolbox for equitable decision-making



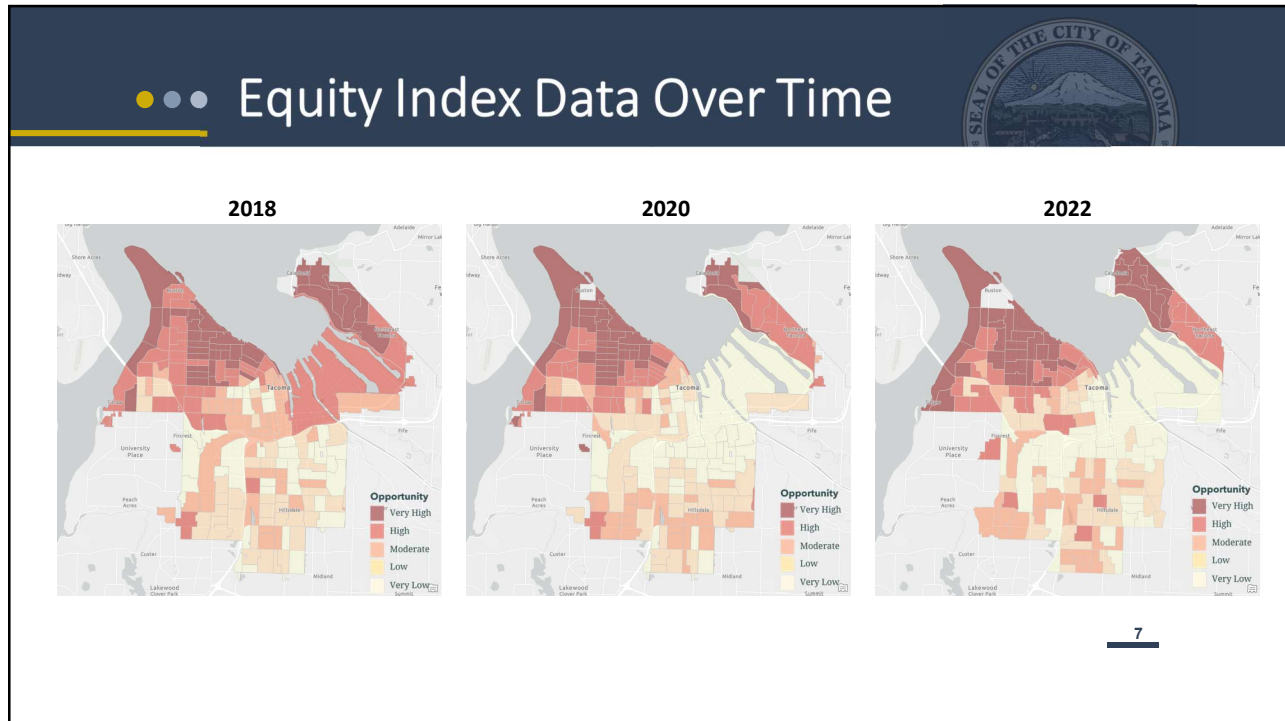
4



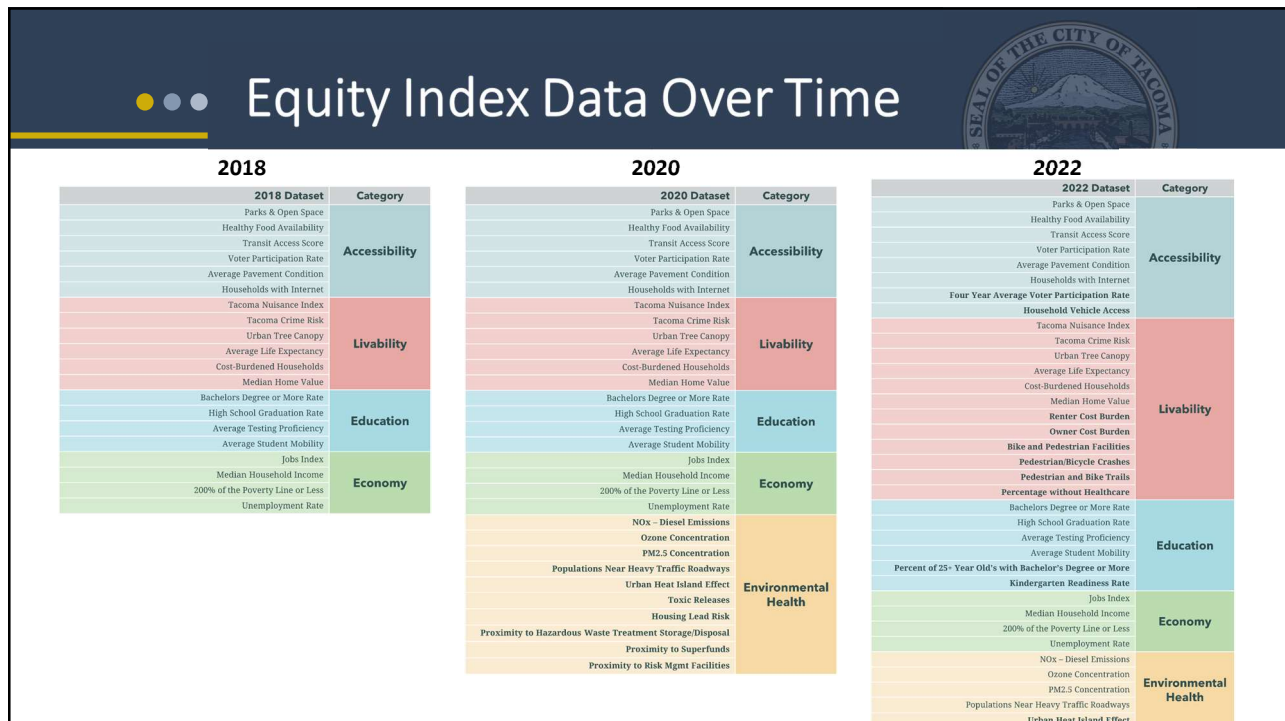
5



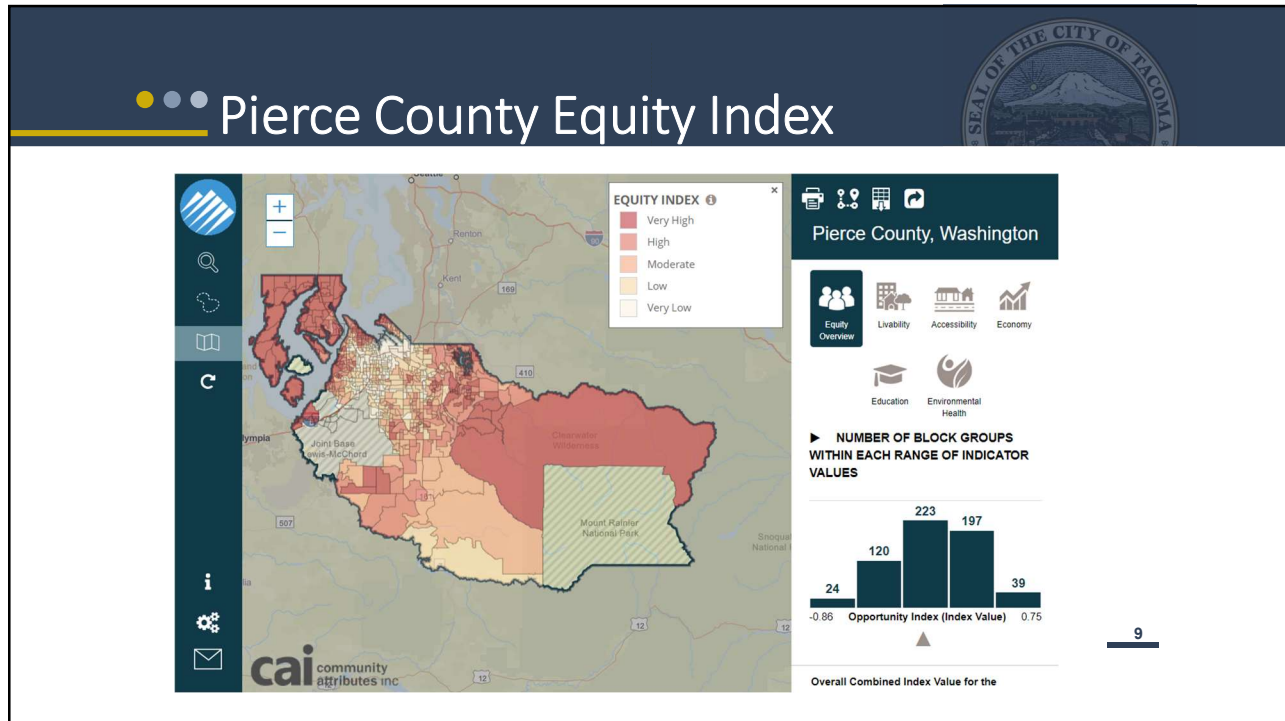
6



7



8



9

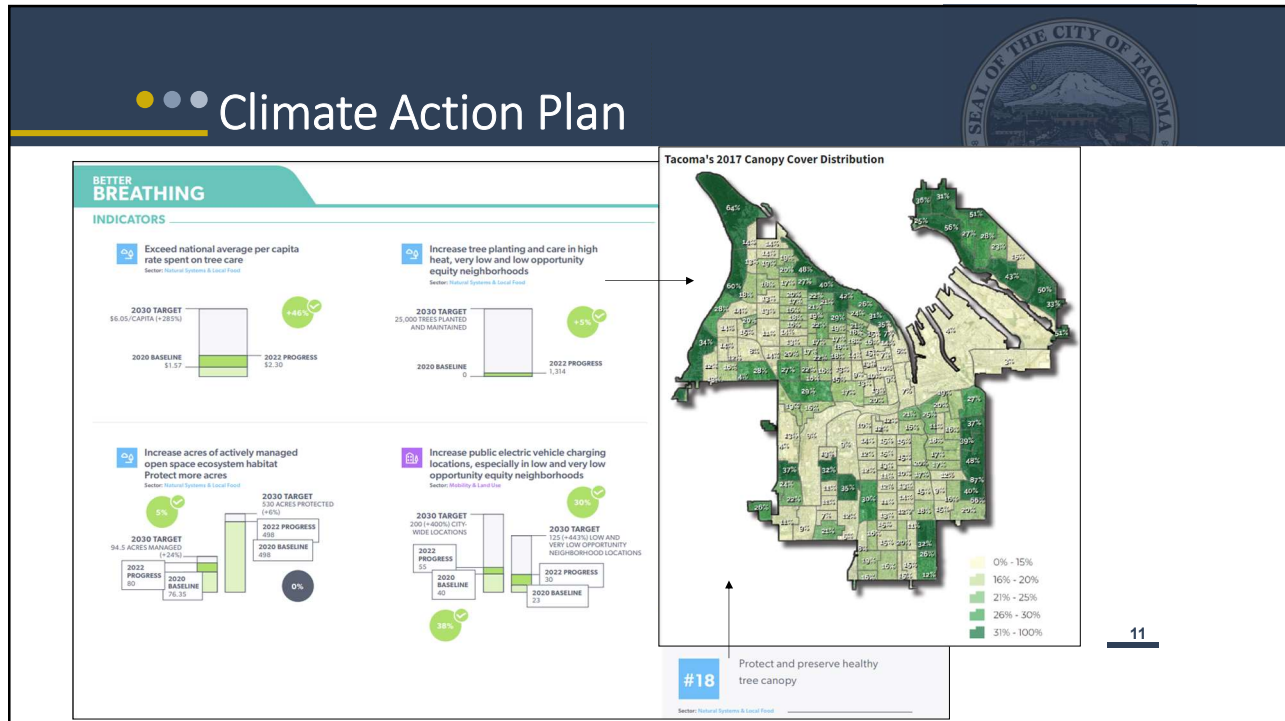
Equity in Action

One Map Transforming City Work in Tacoma

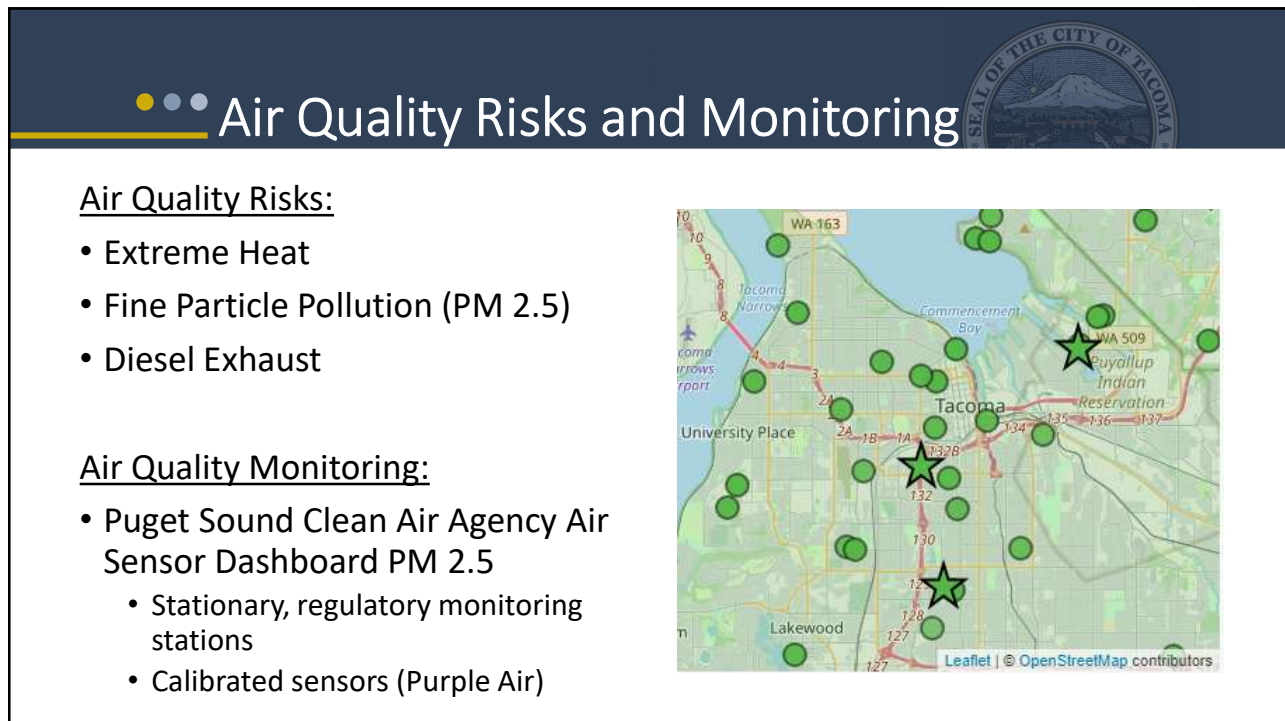
Cityoftacoma.org/EquityAction

QR Code

10



11



12

2022 Data Summary



Air Quality Health Categories

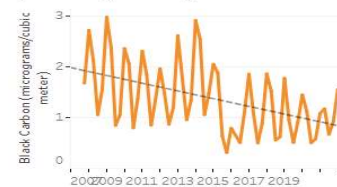
	Good	Moderate	Unhealthy for Sensitive Group	Unhealthy	Very Unhealthy	Hazardous
Pierce County	281	74	8	2	0	0

of Days above PSCAA Health Goal for Fine Particle Pollution (> 25 micrograms/cubic meter)

- Tacoma South L = 25 days
- Tacoma Tideflats = 15 days

Black Carbon at Tacoma Tideflats

Quarterly Average



13

13

WA Climate Commitment Act – Overburdened Communities



- 16 places statewide that are overburdened AND highly impacted by criteria air pollution
 - **East and South Tacoma**
- Work with tribal governments to identify which of their communities are highly impacted by criteria air pollution.
- Involve identified communities as this work progresses.
- Expand the air monitoring network in identified communities.
- Collect and analyze data about criteria air pollutants affecting these communities.
- Work to reduce criteria air pollution in identified communities, as we get more money to pay for this work.
- Report every two years about criteria air pollution, greenhouse gas emissions, and health impacts in each community.
- Re-evaluate the list of communities every six years.

14

14

Focus on Air Quality



Why be idle free?



For your health.
Idling fumes can cause serious diseases like asthma, heart disease, chronic bronchitis, and cancer.

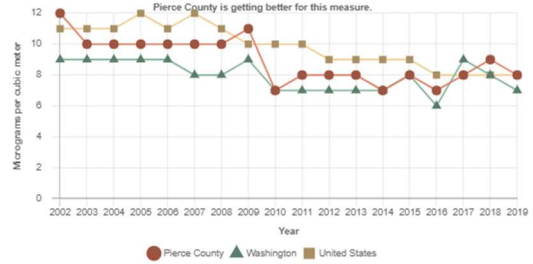


Protect the planet.
Idling cars release harmful chemicals, gasses, and pollutants that contribute to regional haze and global climate change.



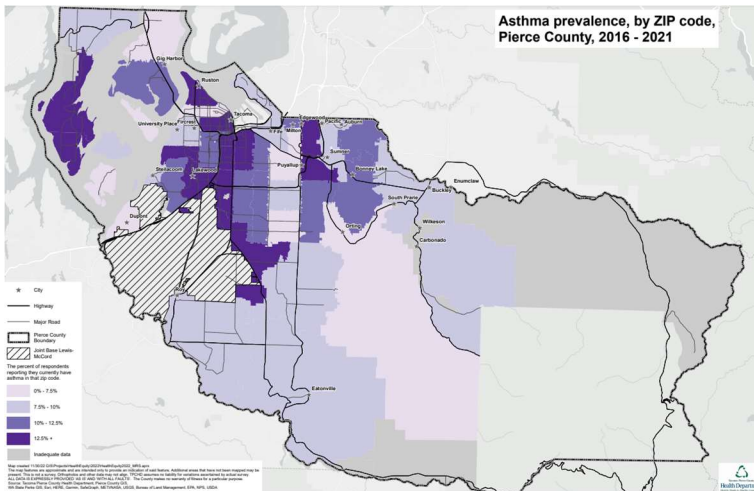
Save fuel and money.
It takes less gas to restart your engine than to idle for 10 seconds or longer.

Air Pollution - Particulate Matter in Pierce County, WA
Average daily density of fine particulate matter: county, state and national trends



Notes:
Data in this trend graph are taken from the Environmental Public Health Tracking Network, and will not match data used in the 2014-2016 Rankings.

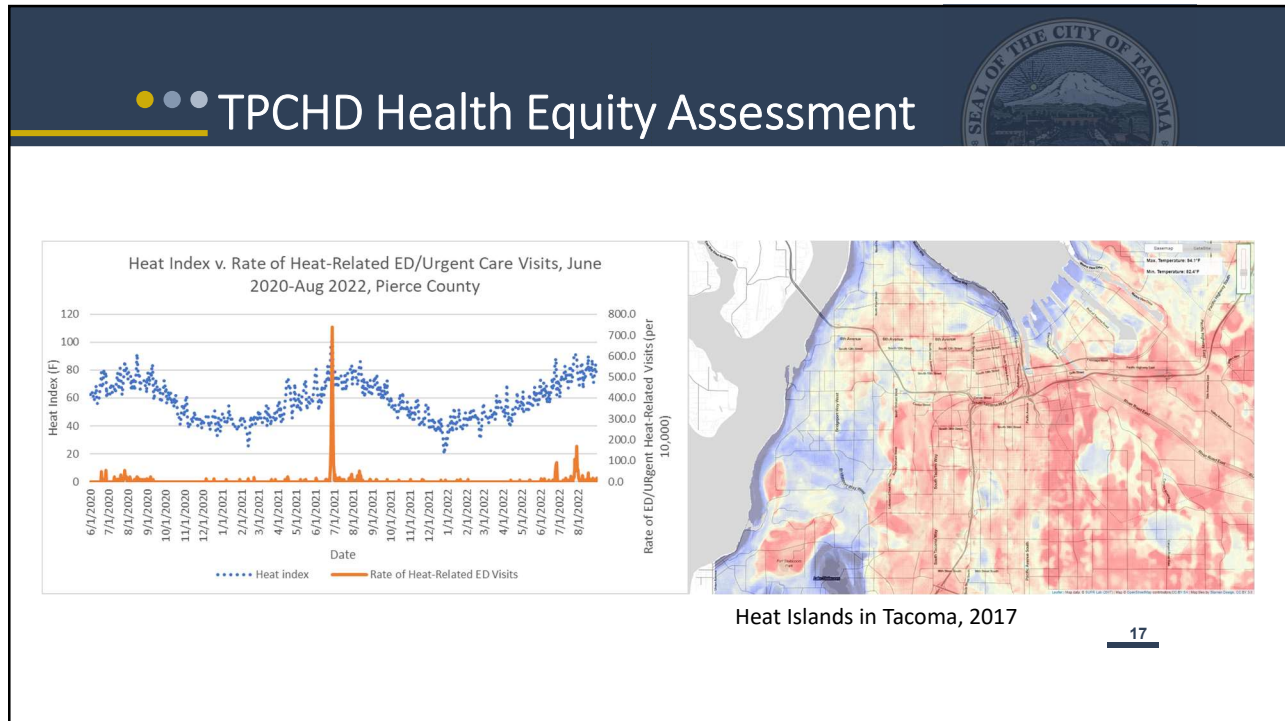
TPCHD Health Equity Assessment



Asthma is a serious condition impacting both adults and children. The impacts are born disproportionately among the poor and people of color.

Prevalence in Pierce County

- More racially diverse areas
- Areas where there are higher levels of poverty
- Higher prevalence near major highways



17

Community Health Needs Assessment/ Improvement Plan (CHNA/ CHIP)

2019 Pierce County
Community Healthy Improvement Plan Priorities

Healthy Neighborhoods & Healthy Communities

Neighborhoods are where we live. Communities are how we live together.

2022 Community Health Needs Assessment (CHNA)

Key Findings:

- Behavioral Health
- Chronic Disease
- Access to Care
- Maternal Child Health
- Violence & Injury

18



Conclusions



- Consider Health in All Policies, including land use and transportation planning
- Make it easy and safe for residents of all ages and abilities to walk, roll, bike, skate, or bus to where they want to go.
- Provide more support for mixed-use development that combines affordable and deeply affordable housing with access to jobs, services, and amenities, especially near transit.
- Reduce the number of families displaced from opportunity-rich neighborhoods.

19

19



Achieving Health Equity and Environmental Justice

Community Vitality and Safety Committee
September 28, 2023



20