

## City of Tacoma 2022 Redistricting Updates Government Performance & Finance Committee July 19, 2022

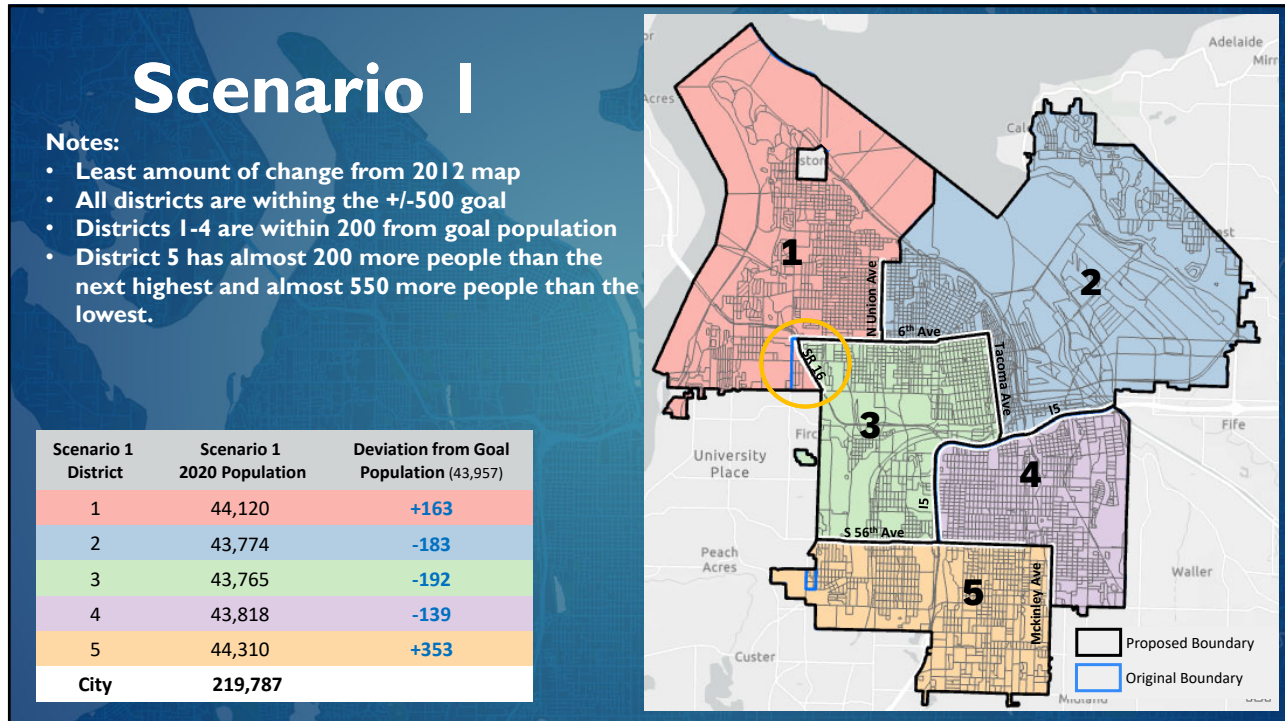
- Rosa McLeod, Government Relations Analyst, GRO
- Christina Chelf, Information Technology Supervisor, GIS

1

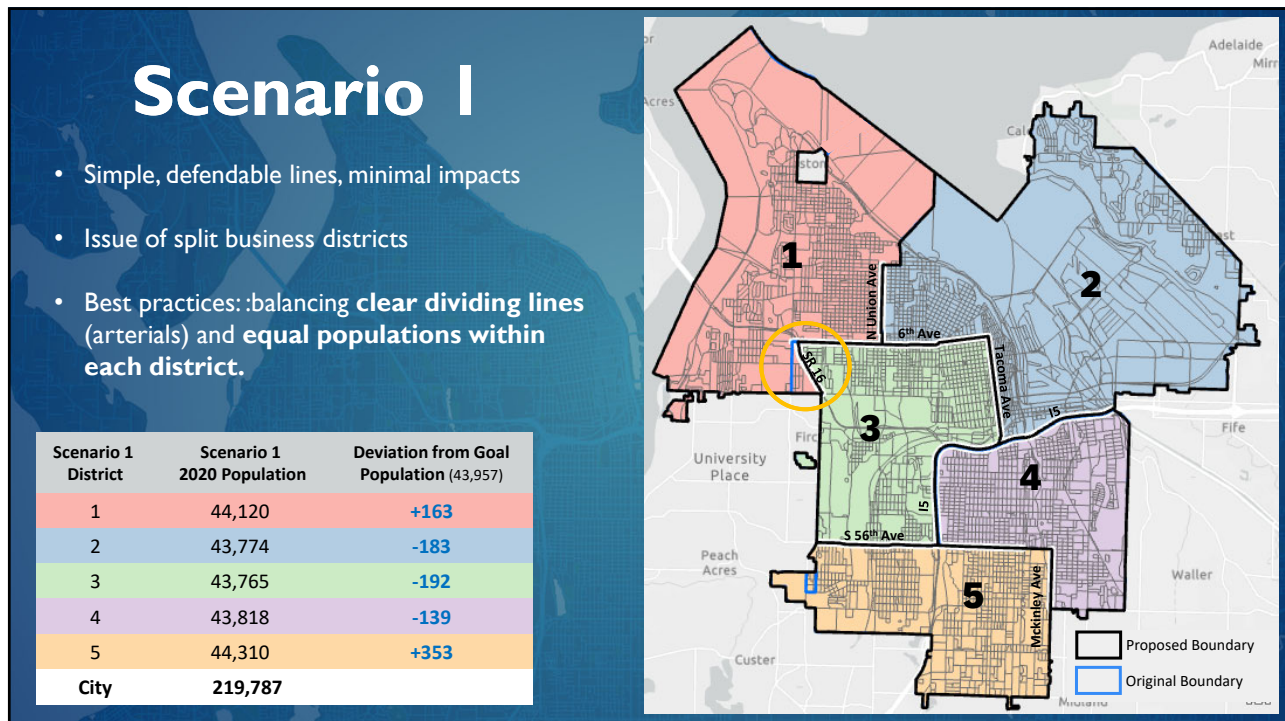
## Redistricting Efforts

- On the 2<sup>nd</sup> of February, 2022 during Council Study Session we discussed our efforts to redistrict the City Council Boundaries.
- Redistricting Goal:
  - Our goals was to adjust district lines as needed in order to ensure an equal number of Tacoma residents across the 5 districts, based on information from the 2020 Census while maintaining continuity of communities as much as possible.
- Methodologies:
  - Prioritized arterials and highways as dividing lines
  - Strived to keep all districts within +/- 500 people from the target population (total population / 5)

2



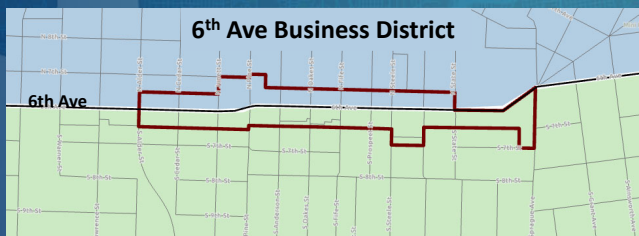
3



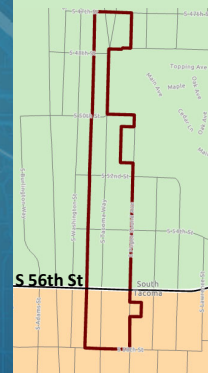
4

# Redistricting Considerations

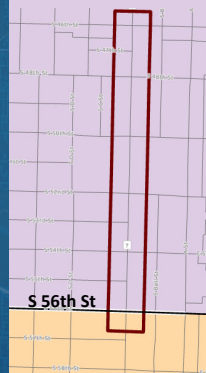
Census blocks follow street and especially arterial centerlines, which can result in splitting of business districts and other communities, which we try to avoid where possible



South Tacoma Business District



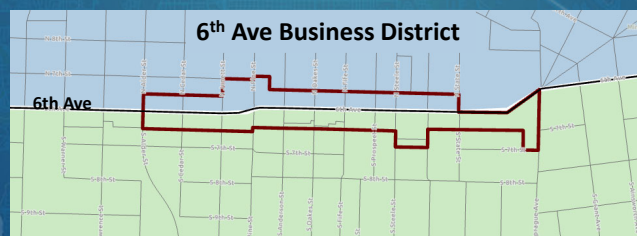
Pacific Business District



5

## 6<sup>th</sup> Avenue Business District

- District is split horizontally.
- 6th Ave is the dividing line between North and Central Tacoma and is therefore used currently in both the council districts AND the neighborhood council districts.
- That line splits the 6th Ave business district, which extends from the South Alder Street to South Sprague Avenue.
- Continuity of communities at issue.

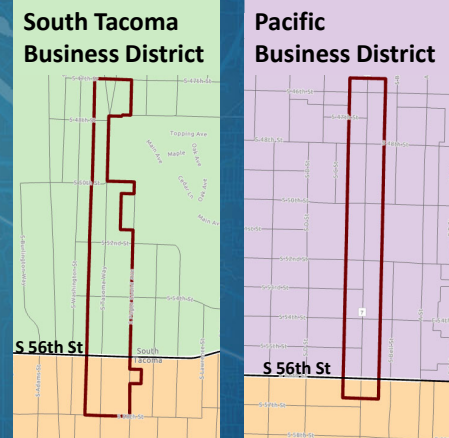


6

# South Tacoma & Pac Ave Business Districts

South Tacoma Business District is split at the very bottom of the district. The overlap into District 5 is 12 blocks.

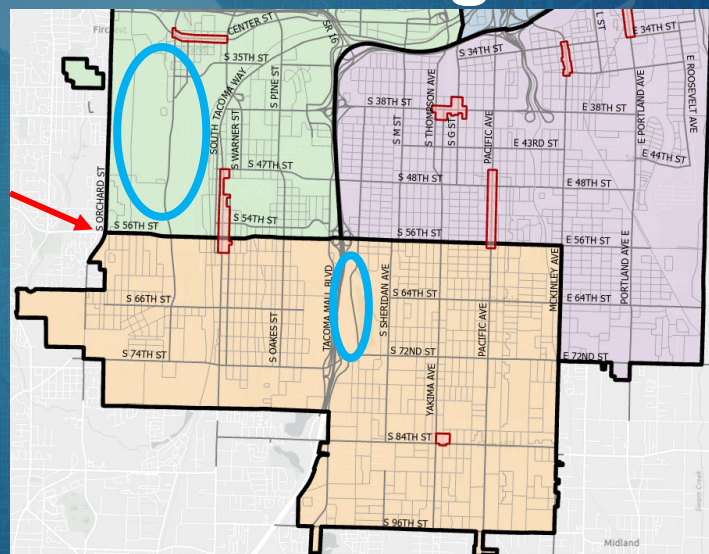
Pacific Avenue Business District is primarily in District 4 but runs a few blocks into District 5.



7

## S 56<sup>th</sup> St – Clean Dividing Lines

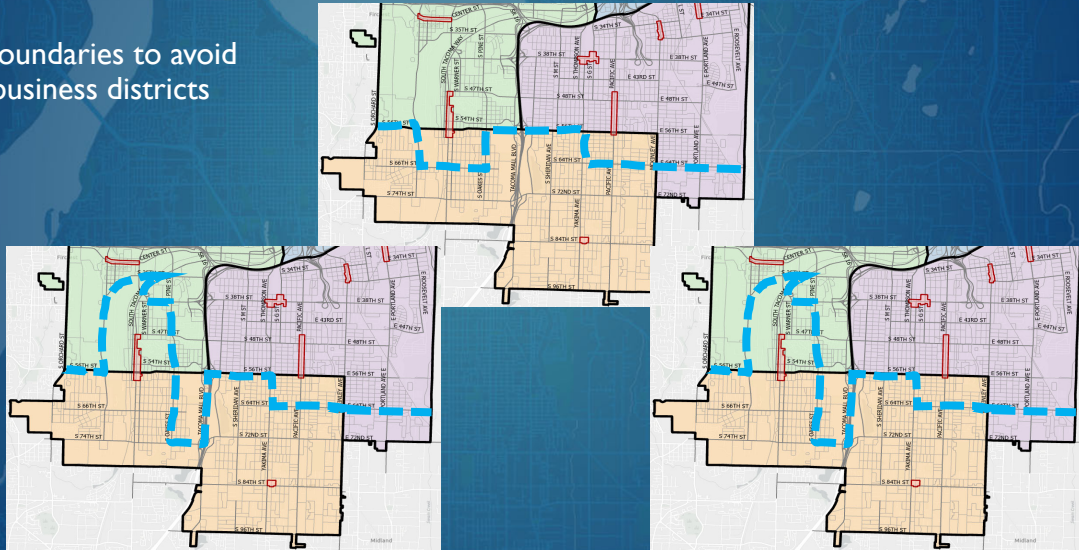
- S 56th is one of two arterials running East/West that runs uninterrupted across the southern half of Tacoma. The other is S 72nd which is too far south to be a dividing line for district 5.
- Most other arterials stop when they run into either the Tacoma Mall area or the South Tacoma Way.
- No other straightforward lines that run through these areas East/West along arterials



8

# S 56<sup>th</sup> St – Clear Dividing Lines

- Sample boundaries to avoid splitting business districts

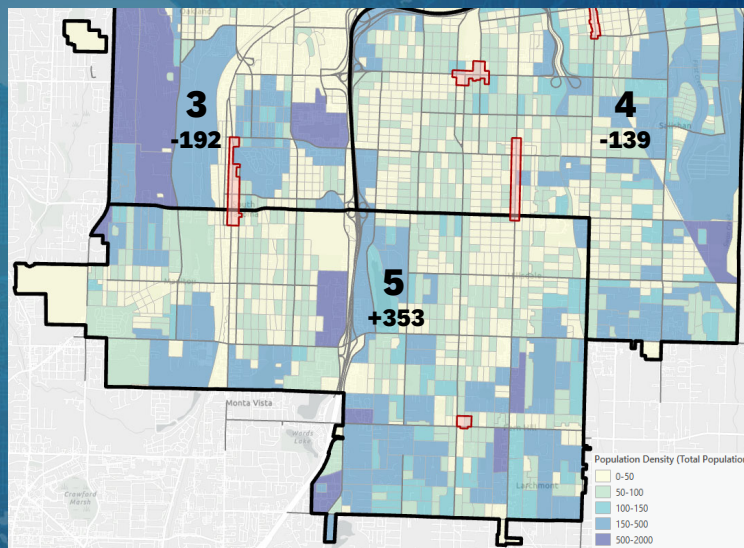


9

# S 56<sup>th</sup> St – Equal Populations

- Difficulties in balancing the population. Recall that in Scenario 1 we had the population down to +/- 500 people.

Scenario 1 District	Scenario 1 2020 Population	Deviation from Goal Population (43,957)
1	44,120	+163
2	43,774	-183
3	43,765	-192
4	43,818	-139
5	44,310	+353
<b>City</b>	<b>219,787</b>	

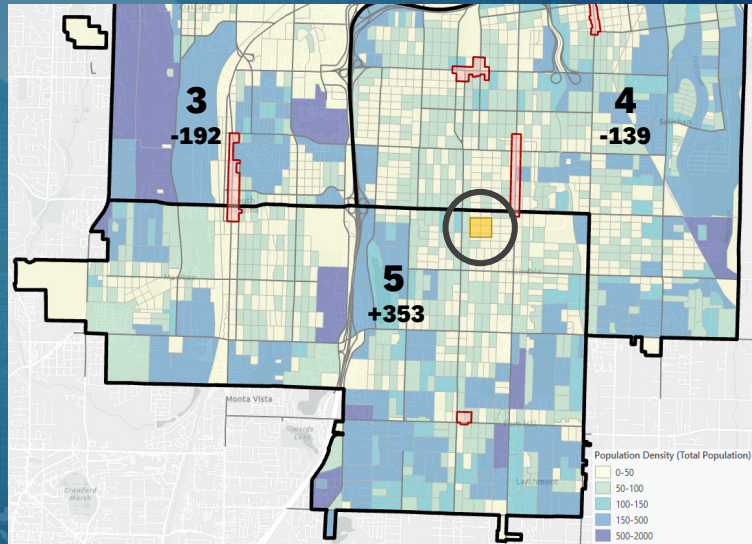


10

# S 56<sup>th</sup> St – Equal Populations

- For a sense of scale this little orange area is ~500 people. So the chances of changing the boundary to go around the business districts and achieving that level of equal spread is highly unlikely.

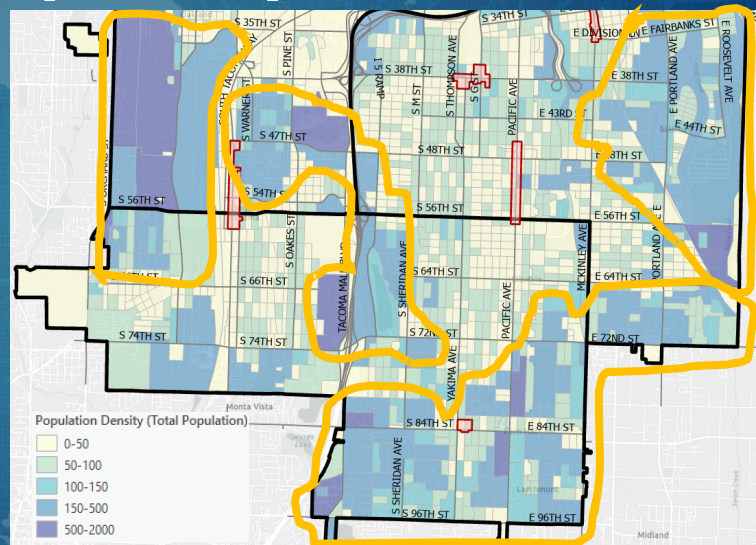
Scenario 1 District	Scenario 1 2020 Population	Deviation from Goal Population (43,957)
1	44,120	+163
2	43,774	-183
3	43,765	-192
4	43,818	-139
5	44,310	+353
<b>City</b>	<b>219,787</b>	



11

# S 56<sup>th</sup> St – Equal Populations

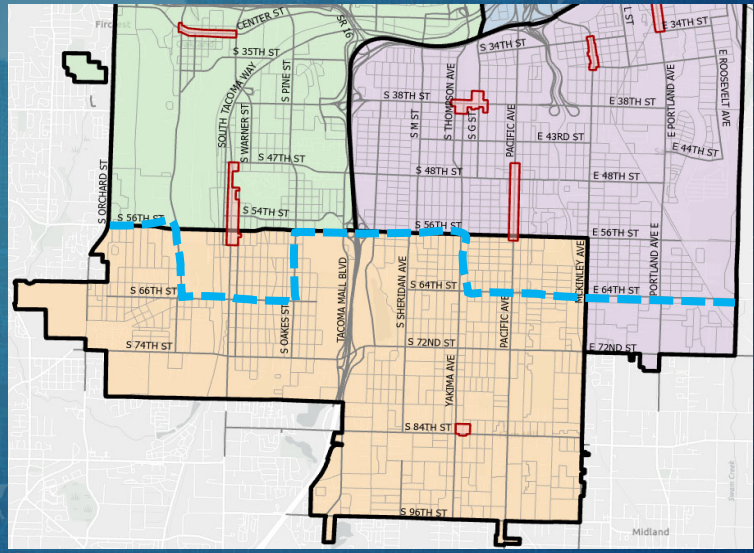
- Additionally these areas are often very dense



12

# S 56<sup>th</sup> St – Equal Populations

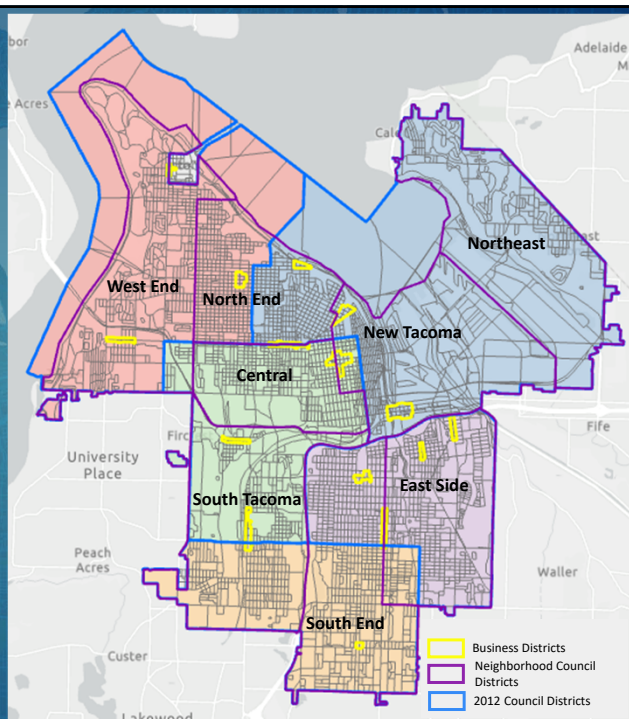
- Sample attempt to maintain even population numbers –
  - Not successful



13

# Conclusion

- Redrawing district boundaries to avoid cutting business districts isn't possible with our current parameters



14