

# AMENDED RECORD OF SURVEY FOR DNR LEASE AREA #22-B02467

A PORTION OF THE SW 1/4 OF THE NW 1/4 OF SECTION 30, TOWNSHIP 21 NORTH, RANGE 3 EAST, W.M.,  
CITY OF TACOMA, PIERCE COUNTY, WASHINGTON.

## HARBOR AREA - LEASE AREA LEGAL DESCRIPTION

THAT PORTION OF THE FOLLOWING DESCRIBED TRACT OF LAND LYING SOUTHWESTERLY OF A LINE 70 FEET NORTHEASTERLY, AS MEASURED AT A RIGHT ANGLE, AND PARALLEL WITH THE INNER HARBOR LINE AS SHOWN ON THE OFFICIAL MAPS OF TACOMA TIDE LANDS AS SURVEYED AND PLATTED BY THE BOARD OF TIDELAND APPRAISERS FOR PIERCE COUNTY ACCORDING TO THE PLAT FILED SEPTEMBER 14, 1895 ON FILE IN THE OFFICE OF THE COMMISSIONER OF PUBLIC LANDS AT OLYMPIA, WASHINGTON:

THE HARBOR AREA IN FRONT OF LOTS 10, 11, 12, AND 13, BLOCK 91, TACOMA TIDE LANDS, BOUNDED BY THE INNER AND OUTER HARBOR LINES, THE NORTHWEST LINE OF SAID LOT 13 AND THE SOUTHEAST LINE OF SAID LOT 10, BOTH PROJECTED ACROSS THE HARBOR AREA TO THE OUTER HARBOR LINE AS SHOWN ON SAID OFFICIAL MAPS OF TACOMA TIDE LANDS.

## UPLAND PARCEL LEGAL DESCRIPTION

PER PIERCE COUNTY REQUEST FOR COMBINATION DATED MAY 3, 2012 AND RECEIVED BY THE ASSESSOR'S OFFICE MAY 21, 2012:

LOTS 10 THROUGH 13, BLOCK 91, MAP OF TACOMA TIDE LANDS, AS SURVEYED AND PLATTED BY THE BOARD OF TIDELAND APPRAISERS OF PIERCE COUNTY, ACCORDING TO THE PLAT FILED FOR RECORD SEPTEMBER 14, 1895 IN THE OFFICE OF THE PIERCE COUNTY AUDITOR.

## BASIS OF BEARING AND METADATA NOTATION

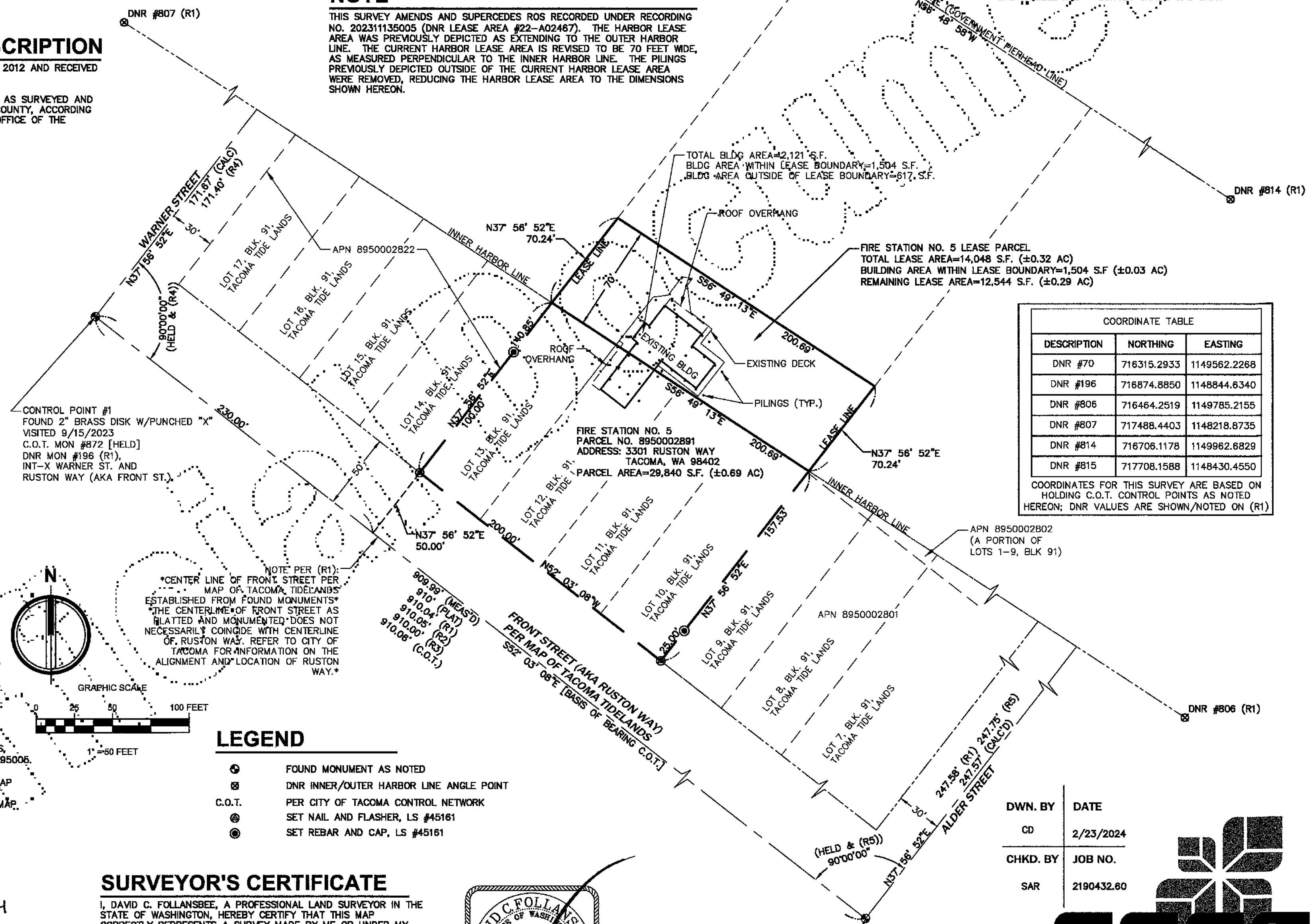
HELD CITY OF TACOMA (C.O.T.) PUBLISHED SURVEY CONTROL MONUMENTS - NAD 83/91 WASHINGTON SOUTH US FOOT; HOLDING MONUMENT: #872, SURFACE BRASS MON, "INTERSECTION OF WARNER ST. AND RUSTON WAY", VISITED 9/15/2023 AND THE BEARING [S52°03'08"E] TO #856, SURFACE BRASS MON, "INTERSECTION OF ALDER ST. AND RUSTON WAY", VISITED 9/15/2023 [PUBLISHED INFORMATION AS FOUND AT WEBSITE: <https://www.govme.org/download/PDF/SurveyMons.pdf>]

CONTROL POINT #1 [C.O.T. MON#872, DNR (R1) MON#196 VISITED 9/15/2023] FND SURFACE MON - 2" BRASS DISC WITH "X" LOCATED AT THE INTERSECTION OF WARNER STREET AND RUSTON WAY N=716874.885, E=1148844.634, (C.O.T.) ORTHOMETRIC HEIGHT/GROUND ELV=10.06 (NGVD29) COMBINED SCALE FACTOR = 0.999991764 RELATIVE ACCURACY PER WSRN OBS. = >95% CONF (IN ACCORDANCE WITH THE EQUIPMENT MANUFACTURER'S SPECIFICATIONS)

CONTROL POINT #2 [C.O.T. MON#856, DNR (R1) MON#70 VISITED 9/15/2023] FND 2" SURFACE BRASS DISC WITH "X" LOCATED AT THE INTERSECTION OF ALDER STREET AND RUSTON WAY N=716315.251, E=1149562.281, (C.O.T.) ORTHOMETRIC HEIGHT/GROUND ELV=10.88 (NGVD 29) COMBINED SCALE FACTOR = 0.999991409 RELATIVE ACCURACY PER WSRN OBS. = >95% CONF (IN ACCORDANCE WITH THE EQUIPMENT MANUFACTURER'S SPECIFICATIONS)

VERTICAL DATUM: CITY OF TACOMA BENCHMARK NO. 3611 BRASS MON IN SIDEWALK AT INTERSECTION OF ALDER STREET AND RUSTON WAY PUBLISHED ELEVATION 10.88' NGVD 29 [PUBLISHED INFORMATION AS FOUND AT WEBSITE: <https://www.govme.org/download/PDF/VerticalControl.pdf>]

\*ALL DISTANCES SHOWN HEREON ARE GROUND DISTANCES\*



## NOTE

THIS SURVEY AMENDS AND SUPERCEDES ROS RECORDED UNDER RECORDING NO. 202311135005 (DNR LEASE AREA #22-A02467). THE HARBOR LEASE AREA WAS PREVIOUSLY DEPICTED AS EXTENDING TO THE OUTER HARBOR LINE. THE CURRENT HARBOR LEASE AREA IS REVISED TO BE 70 FEET WIDE, AS MEASURED PERPENDICULAR TO THE INNER HARBOR LINE. THE PILING'S PREVIOUSLY DEPICTED OUTSIDE OF THE CURRENT HARBOR LEASE AREA WERE REMOVED, REDUCING THE HARBOR LEASE AREA TO THE DIMENSIONS SHOWN HEREON.

## SURVEY FOR

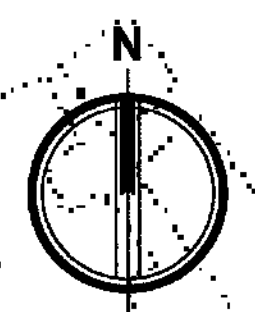
CITY OF TACOMA, PUBLIC WORKS  
747 MARKET ST, ROOM 747  
TACOMA, WA 98407

## EQUIPMENT USED

3" TOTAL STATION USING STANDARD FIELD TRAVERSE METHODS FOR CONTROL AND STAKING.  
GPS TRIMBLE R12 SURVEY GRADE GPS UNIT.

COORDINATE TABLE		
DESCRIPTION	NORTHING	EASTING
DNR #70	716315.2933	1149562.2268
DNR #196	716874.8850	1148844.6340
DNR #806	716464.2519	1149785.2155
DNR #807	717488.4403	1148218.8735
DNR #814	716706.1178	1149962.6829
DNR #815	717708.1588	1148430.4550

COORDINATES FOR THIS SURVEY ARE BASED ON HOLDING C.O.T. CONTROL POINTS AS NOTED HEREON; DNR VALUES ARE SHOWN/NOTED ON (R1)



## REFERENCE SURVEYS

- STATE OF WASHINGTON DEPARTMENT OF NATURAL RESOURCES, "TACOMA HARBOR" SURVEY, SHEET 5 OF 14; REC. NO. 200006285006.
- ROS FOR DNR LEASE #22-A02467; REC. NO. 201203285001.
- BOUNDARY SURVEY OF LEASE AREA 22-0024674, SURVEY MAP PROVIDED BY DNR, DATED OCTOBER 9, 1979.
- BOUNDARY SURVEY OF LEASE AREA 22-002161AD, SURVEY MAP PROVIDED BY DNR, DATED FEBRUARY 6, 1988.
- ROS, REC. NO. 202107225005
- ROS, REC. NO. 202311135005

## LEGEND

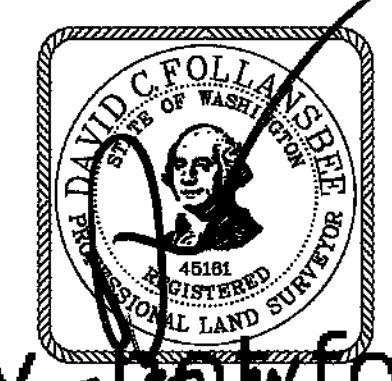
- FOUND MONUMENT AS NOTED
- DNR INNER/OUTER HARBOR LINE ANGLE POINT
- C.O.T. PER CITY OF TACOMA CONTROL NETWORK
- SET NAIL AND FLASHER, LS #45161
- SET REBAR AND CAP, LS #45161

## AUDITOR'S CERTIFICATE

FILED FOR RECORD THIS 27 DAY OF FEB 2024  
AT 4:18 P.M. IN BOOK OF AT PAGE  
AT THE REQUEST OF THE CITY OF TACOMA, PUBLIC WORKS  
FOR LINDA FARMER  
PIERCE COUNTY AUDITOR  
\$423.50 202402275005

## SURVEYOR'S CERTIFICATE

I, DAVID C. FOLLANSBEE, A PROFESSIONAL LAND SURVEYOR IN THE STATE OF WASHINGTON, HEREBY CERTIFY THAT THIS MAP CORRECTLY REPRESENTS A SURVEY MADE BY ME OR UNDER MY DIRECT SUPERVISION IN SEPTEMBER, 2023, IN COMPLIANCE WITH THE REQUIREMENTS OF THE SURVEY RECORDING ACT, CHAPTER 58.09 R.C.W. AND 2-130 W.A.C. AT THE REQUEST OF THE CITY OF TACOMA, PUBLIC WORKS.



CONTROL POINT #2  
FOUND 2" BRASS DISK W/PUNCHED "X"  
VISITED 9/15/2023  
C.O.T. MON #856, DNR MON #70 (R1),  
INT-X ALDER ST. AND  
RUSTON WAY (AKA FRONT ST)

DWN. BY	DATE
CD	2/23/2024
CHKD. BY	JOB NO.
SAR	2190432.60



2215 North 30th Street, Suite 200 Tacoma, WA 98403  
253.383.2422 TEL 253.383.2572 FAX www.ahbl.com WEB

For reference only, not for re-sale.