
OCTOBER

TACOMA RAIL

2015

**FINANCIAL
REPORT**



Public Utility Board

BRYAN FLINT

Chair

MARK PATTERSON

Vice-Chair

MONIQUE TRUDNOWSKI

Secretary

WOODROW JONES

Member

KAREN LARKIN

Member

WILLIAM A. GAINES
Director of Utilities/CEO

DALE KING
Rail Superintendent

ANDREW CHERULLO
Finance Director

DEPARTMENT OF PUBLIC UTILITIES
CITY OF TACOMA

CITY OF TACOMA, WASHINGTON
DEPARTMENT OF PUBLIC UTILITIES, BELT LINE DIVISION
Doing Business As

TACOMA RAIL

TABLE OF CONTENTS

Note: These financial statements are interim, unaudited reports prepared primarily for the use of management. Not all transactions reported in these statements have been recorded on the full accrual basis of accounting or in accordance with generally accepted accounting principles.

STATEMENTS OF NET POSITION	2 - 3
STATEMENTS OF REVENUES, EXPENSES AND CHANGES IN NET POSITION	4 - 5
SUMMARY OF SWITCHING REVENUES AND SWITCHING ACTIVITIES	6 - 7
SUPPLEMENTAL DATA	9 - 13

CITY OF TACOMA, WASHINGTON
DEPARTMENT OF PUBLIC UTILITIES
TACOMA RAIL

STATEMENTS OF NET POSITION

ASSETS	OCTOBER 31,	
	2015	2014
CAPITAL ASSETS		
Road and Equipment Property	\$39,109,390	\$33,510,101
Less Accumulated Depreciation	(17,170,857)	(16,176,373)
Total	21,938,533	17,333,728
Construction Work in Progress	1,848,011	2,821,506
Net Capital Assets	23,786,544	20,155,234
SPECIAL FUNDS		
Cash and Equity in Pooled Investments:		
Debt Service Funds	21,701	21,701
Total Special Funds	21,701	21,701
CURRENT ASSETS		
Cash & Equity in Pooled Investments	9,135,607	9,823,504
Customer Accounts Receivable	3,336,046	3,031,765
Prepayments	1,657,794	1,950,540
Materials and Supplies Inventory.....	949,881	842,485
Total Current Assets	15,079,328	15,648,294
TOTAL ASSETS	\$38,887,573	\$35,825,229

These statements should be read in conjunction with the Notes to Financial Statements contained in the 2014 Annual Report.

NET POSITION AND LIABILITIES	OCTOBER 31,	
	2015	2014
NET POSITION		
Net Investment in Capital Assets.....	\$17,419,379	\$15,633,209
Restricted for:		
Debt Service	21,701	21,701
Unrestricted	9,777,891	10,704,127
TOTAL NET POSITION	27,218,971	26,359,037
LONG-TERM DEBT, NET OF CURRENT MATURITIES		
2006 Senior Lien Revenue Bond	64,238	312,763
State Loans.....	5,460,934	3,656,257
Total Long-Term Liabilities	5,525,172	3,969,020
CURRENT LIABILITIES		
Accounts Payable	672,307	411,558
Customer Deposits	45,900	45,900
Wages Payable	393,971	337,438
Unemployment and other Tax Payables	234,969	324,310
Volume Incentive Payable	916,667	833,333
Current Portion of Long Term Debt	841,994	553,005
Interest Payable	1,405	2,463
Current Portion of Compensated Absences	101,373	77,505
Total Current Liabilities	3,208,586	2,585,512
LONG-TERM LIABILITIES		
On the Job Injury Reserve	709,601	731,632
Long Term Portion of Compensated Absences	912,353	697,546
Other Long-Term Liabilities	1,312,890	1,482,482
Total Long-Term Liabilities	2,934,844	2,911,660
TOTAL LIABILITIES	11,668,602	9,466,192
TOTAL NET POSITION AND LIABILITIES	\$38,887,573	\$35,825,229

CITY OF TACOMA, WASHINGTON
DEPARTMENT OF PUBLIC UTILITIES
TACOMA RAIL

STATEMENTS OF REVENUE, EXPENSES AND CHANGES IN NET POSITION

	OCTOBER 2015	OCTOBER 2014
	<u> </u>	<u> </u>
OPERATING REVENUES		
Switching Revenues	\$2,224,985	\$2,297,130
Demurrage and Other Operating Revenues	<u>226,623</u>	<u>255,953</u>
Total Operating Revenues	2,451,608	2,553,083
 OPERATING EXPENSES		
Maintenance of Way and Structures		
Salaries and Wages	77,771	95,145
Supplies and Expense	163,691	158,062
Mechanical		
Salaries and Wages	157,882	171,490
Supplies and Expense	222,243	219,170
Operations		
Salaries and Wages	767,226	772,497
Supplies and Expense	168,673	161,240
Administration		
Salaries and Wages	170,047	158,774
Supplies and Expense	359,373	436,415
Taxes - State	32,981	34,644
Depreciation	<u>101,740</u>	<u>89,105</u>
Total Operating Expenses	2,221,627	2,296,542
 Net Operating Income	229,981	256,541
 NON-OPERATING REVENUES (EXPENSES)		
Interest Income	7,403	3,623
Miscellaneous	83,135	125,202
Interest Expense	<u>(1,407)</u>	<u>(2,466)</u>
Total Non-Operating Revenues	89,131	126,359
 Contributions - Grants	-	-
Contributions - Others	<u>-</u>	<u>-</u>
Total Contributions	-	-
 Transfers		
City of Tacoma Gross Earnings Tax	(183,865)	(204,342)
Transfers to other funds	<u>(36,972)</u>	<u>(25,000)</u>
Total Transfers	(220,837)	(229,342)
 CHANGE IN NET POSITION	<u>\$98,275</u>	<u>\$153,558</u>
 TOTAL NET POSITION - JANUARY 1		
 TOTAL NET POSITION - OCTOBER 31		

These statements should be read in conjunction with the Management Discussion and Analysis in the September 2015 Financial Report.

YEAR TO DATE			
OCTOBER 31, 2015	OCTOBER 31, 2014	2015/2014 VARIANCE	PERCENT CHANGE
\$21,480,203	\$22,462,115	(\$981,912)	-4.4%
3,007,926	2,251,897	756,029	33.6%
<u>24,488,129</u>	<u>24,714,012</u>	<u>(225,883)</u>	-0.9%
896,758	832,898	63,860	7.7%
1,182,978	1,250,926	(67,948)	-5.4%
1,677,856	1,286,330	391,526	30.4%
2,176,970	1,973,565	203,405	10.3%
8,289,711	7,397,860	891,851	12.1%
1,104,789	1,092,729	12,060	1.1%
1,826,291	1,696,013	130,278	7.7%
1,967,709	3,204,705	(1,236,996)	-38.6%
348,996	359,276	(10,280)	-2.9%
1,017,402	891,054	126,348	14.2%
<u>20,489,460</u>	<u>19,985,356</u>	<u>504,104</u>	2.5%
3,998,669	4,728,656	(729,987)	-15.4%
59,587	55,518	4,069	7.3%
739,235	743,174	(3,939)	-0.5%
(18,868)	(29,196)	(10,328)	-35.4%
<u>779,954</u>	<u>769,496</u>	<u>10,458</u>	1.4%
34,670	-	34,670	100.0%
216,000	700,000	(484,000)	-69.1%
<u>250,670</u>	<u>700,000</u>	<u>(449,330)</u>	-64.2%
(2,003,540)	(2,032,294)	(28,754)	-1.4%
(36,972)	(25,000)	11,972	47.9%
<u>(2,040,512)</u>	<u>(2,057,294)</u>	<u>(16,782)</u>	-0.8%
2,988,781	4,140,858	(\$1,152,077)	-27.8%
<u>24,230,190</u>	<u>22,218,179</u>		
<u>\$27,218,971</u>	<u>\$26,359,037</u>		

CITY OF TACOMA, WASHINGTON
DEPARTMENT OF PUBLIC UTILITIES
TACOMA RAIL

SUMMARY OF SWITCHING REVENUES AND SWITCHING ACTIVITIES

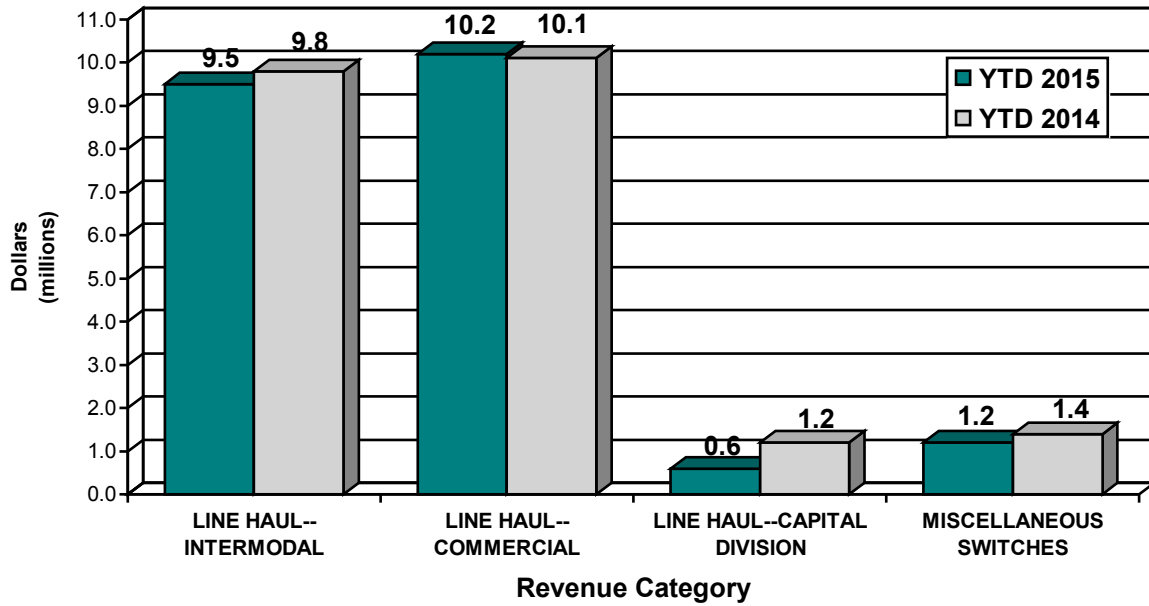
	<u>OCTOBER 2015</u>	<u>OCTOBER 2014</u>
SWITCHING REVENUES		
LINE HAULS--INTERMODAL	\$996,163	\$1,067,155
LINE HAULS--COMMERCIAL	1,053,655	1,012,916
LINE HAULS--CAPITAL DIVISION	52,559	116,309
MISCELLANEOUS SWITCHES	<u>122,608</u>	<u>100,750</u>
TOTAL SWITCHING REVENUES	<u><u>\$2,224,985</u></u>	<u><u>\$2,297,130</u></u>
 SWITCHING ACTIVITIES (CARS)		
LINE HAULS--INTERMODAL	5,817	8,459
LINE HAULS--COMMERCIAL	2,352	2,437
LINE HAULS--CAPITAL DIVISION	121	260
MISCELLANEOUS SWITCHES	<u>246</u>	<u>212</u>
TOTAL CARS SWITCHED	<u><u>8,536</u></u>	<u><u>11,368</u></u>

YEAR TO DATE			
OCTOBER 31, 2015	OCTOBER 31, 2014	2015/2014 VARIANCE	PERCENT CHANGE
\$9,539,294	\$9,777,146	(\$237,852)	-2.4%
10,172,582	10,124,162	48,420	0.5%
604,722	1,179,036	(574,314)	-48.7%
<u>1,163,605</u>	<u>1,381,771</u>	<u>(218,166)</u>	-15.8%
<u>\$21,480,203</u>	<u>\$22,462,115</u>	<u>(\$981,912)</u>	-4.4%
57,216	60,266	(3,050)	-5.1%
24,584	26,957	(2,373)	-8.8%
1,398	2,627	(1,229)	-46.8%
<u>2,447</u>	<u>2,634</u>	<u>(187)</u>	-7.1%
<u>85,645</u>	<u>92,484</u>	<u>(6,839)</u>	-7.4%

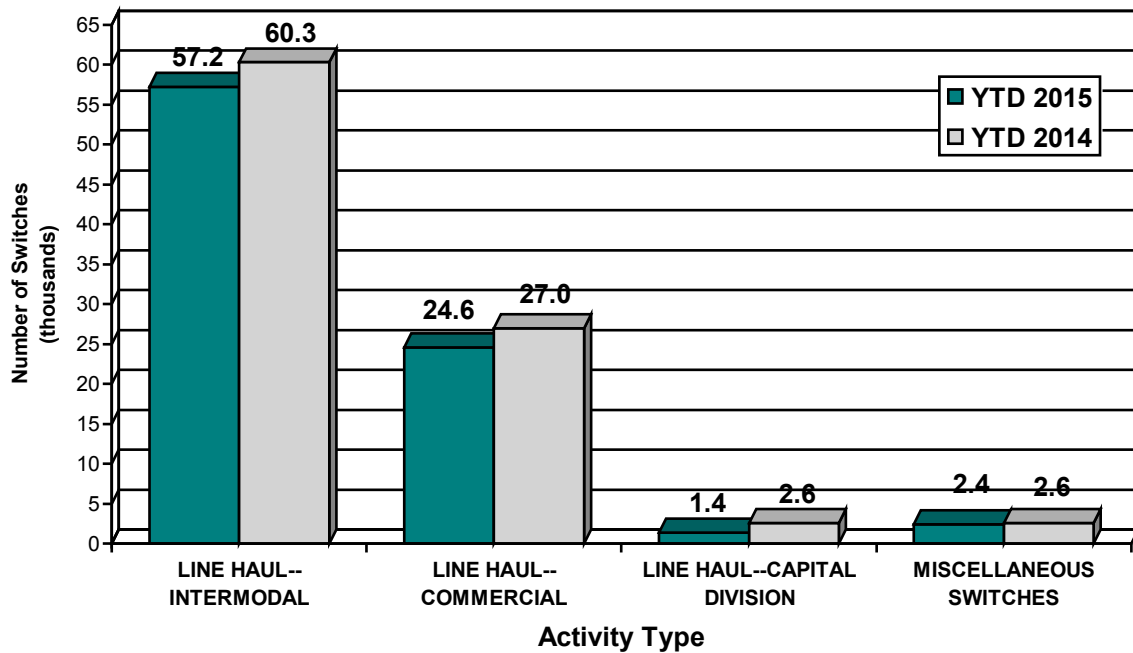
This page has been left blank intentionally.

Supplemental Data

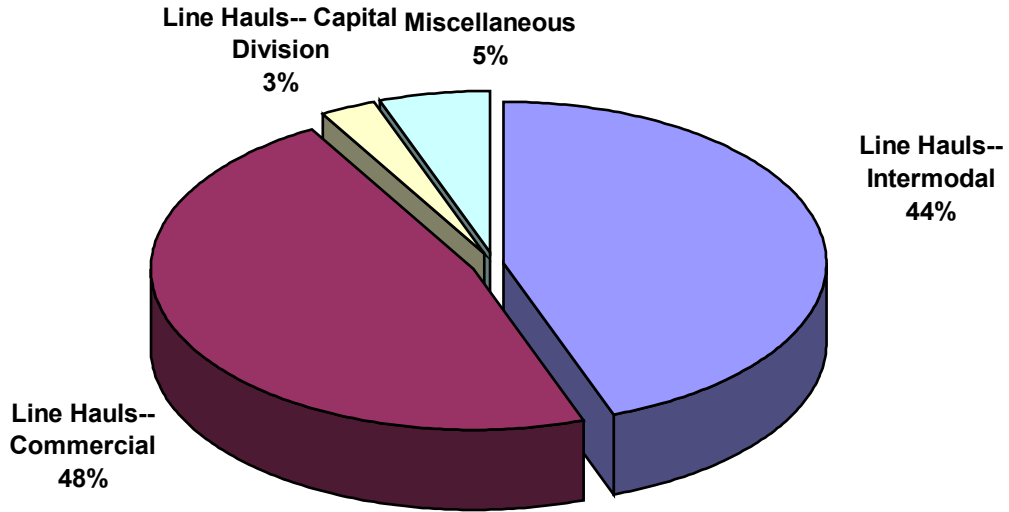
SWITCHING REVENUES
Year to Date - October 2015 & 2014



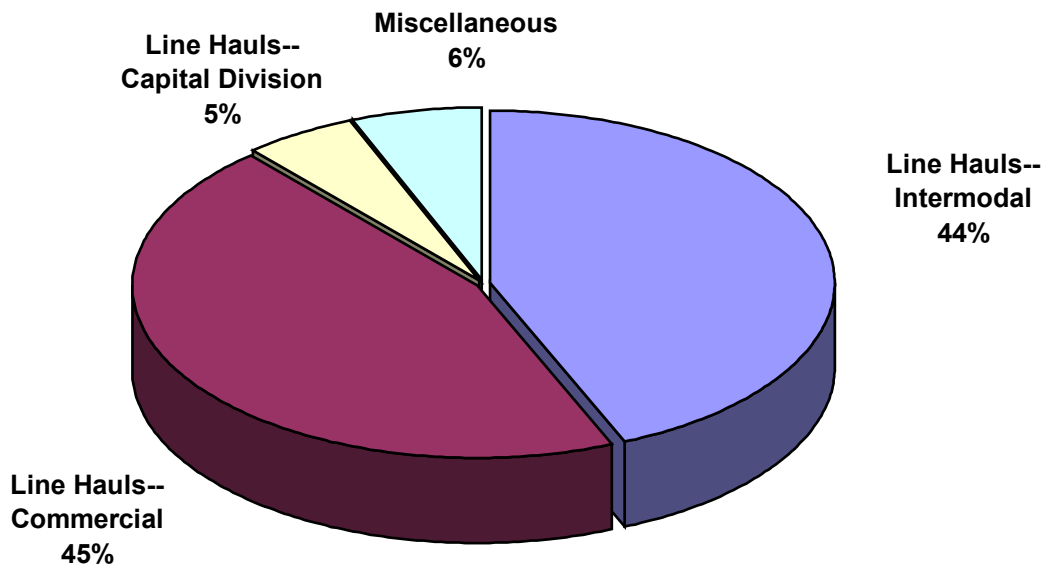
SWITCHING ACTIVITIES
Year to Date - October 2015 & 2014



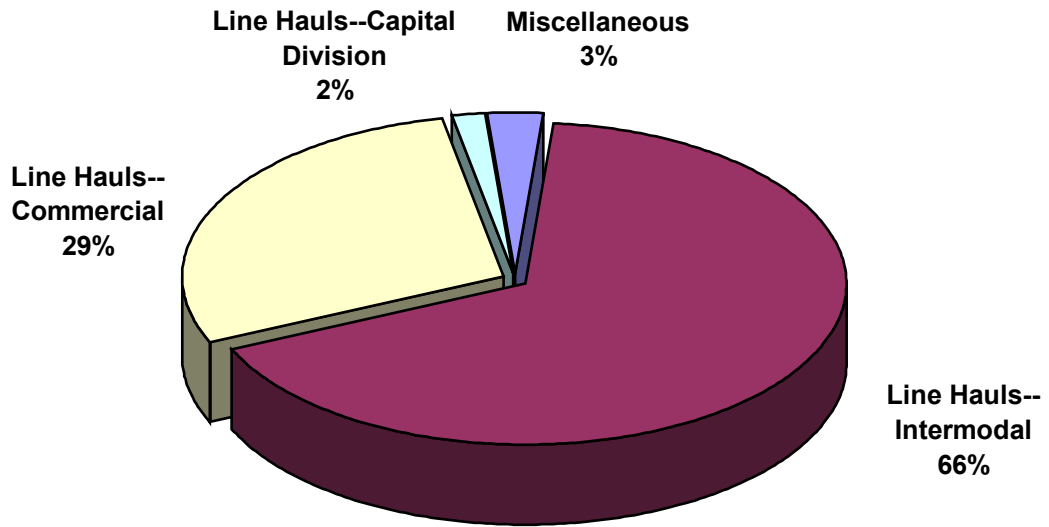
SWITCHING REVENUES
Year to Date - October 2015 (\$21,480,203)



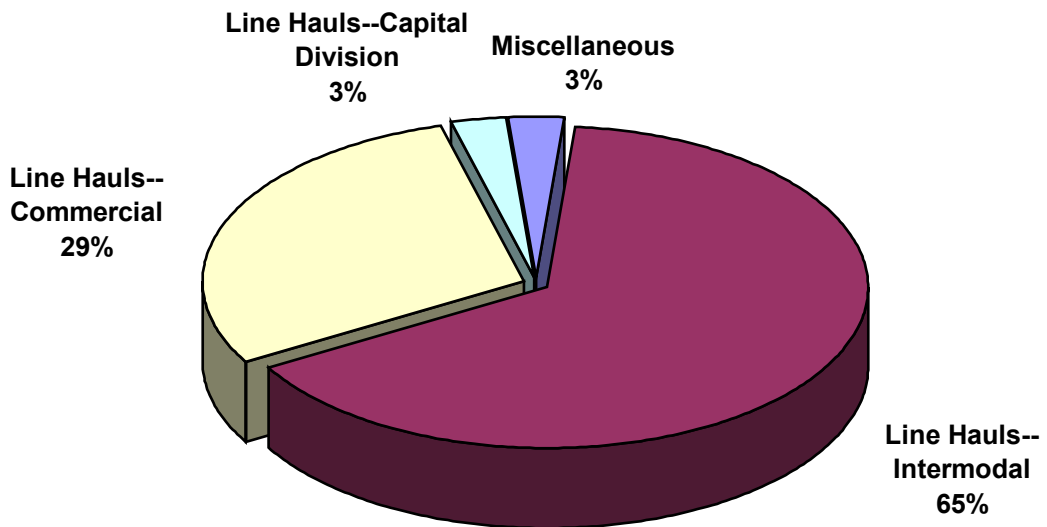
SWITCHING REVENUES
Year to Date - October 2014 (\$22,462,115)



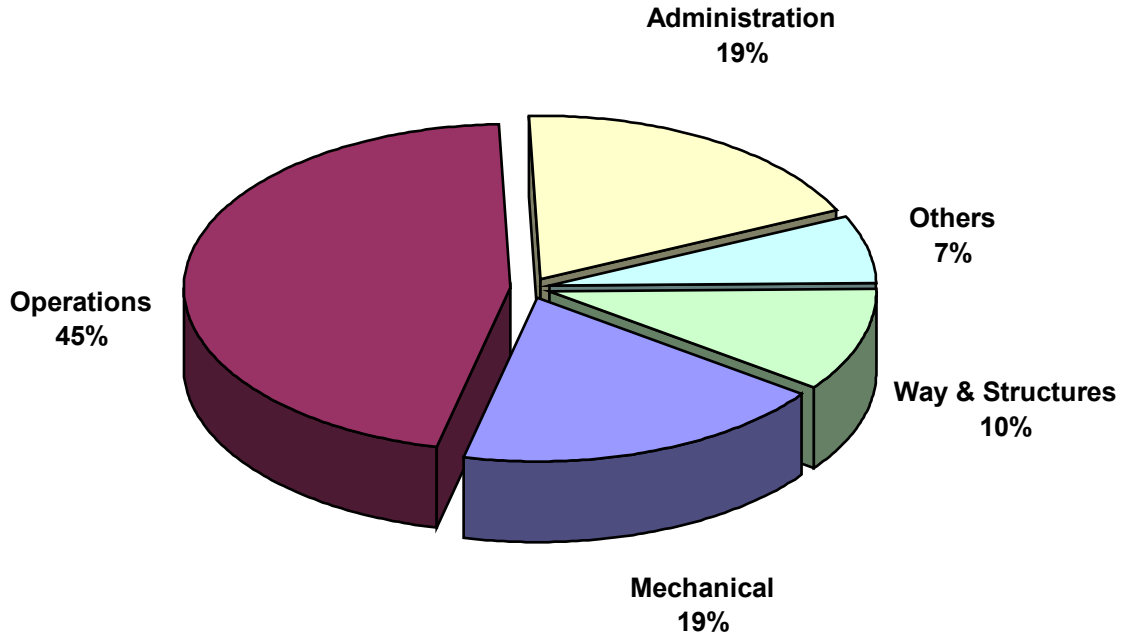
SWITCHING ACTIVITY
Year to Date - October 2015 (85,645 cars)



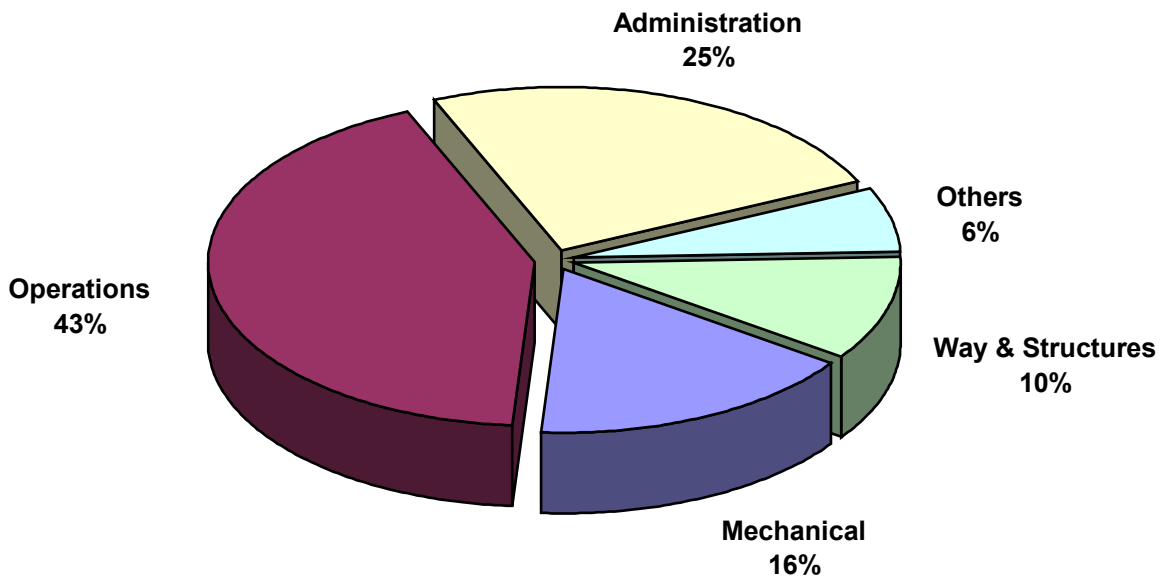
SWITCHING ACTIVITY
Year to Date - October 2014 (92,484 cars)



TOTAL OPERATING EXPENSES
Year to Date - October 2015 (\$20,489,460)



TOTAL OPERATING EXPENSES
Year to Date - October 2014 (\$19,985,356)





The City of Tacoma does not discriminate on the basis of disability in any of its programs, activities, or services. To request this information in an alternative format or to request a reasonable accommodation, please contact the City Clerk's Office at (253) 591-5505. TTY or speech to speech users please dial 711 to connect to Washington Relay Services.