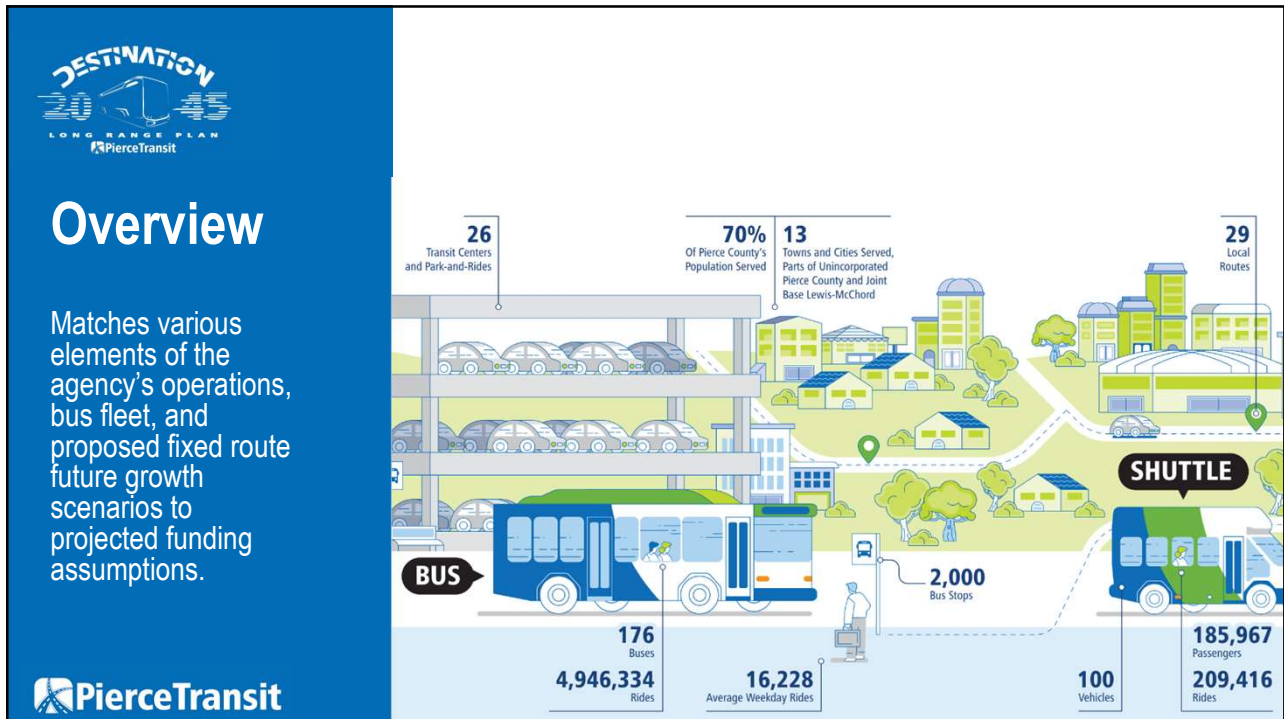





**City of Tacoma Council Meeting  
Study Session  
17 December 2024**

Anna Petersen, Senior Planner  
Darin Stavish, Principal Planner

1




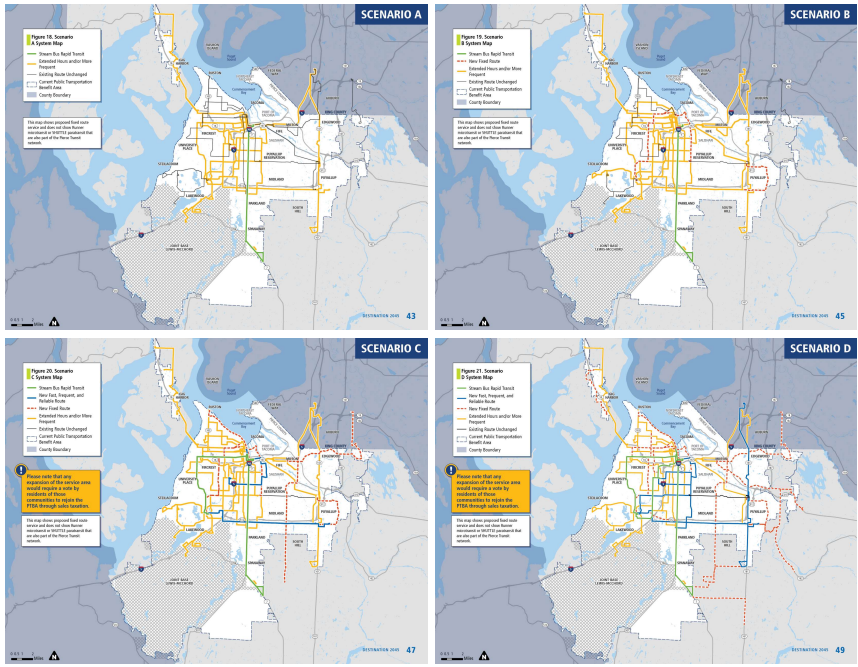
2




## Growth Scenarios

Four incremental growth scenarios showcase how the system can grow under different funding assumptions.






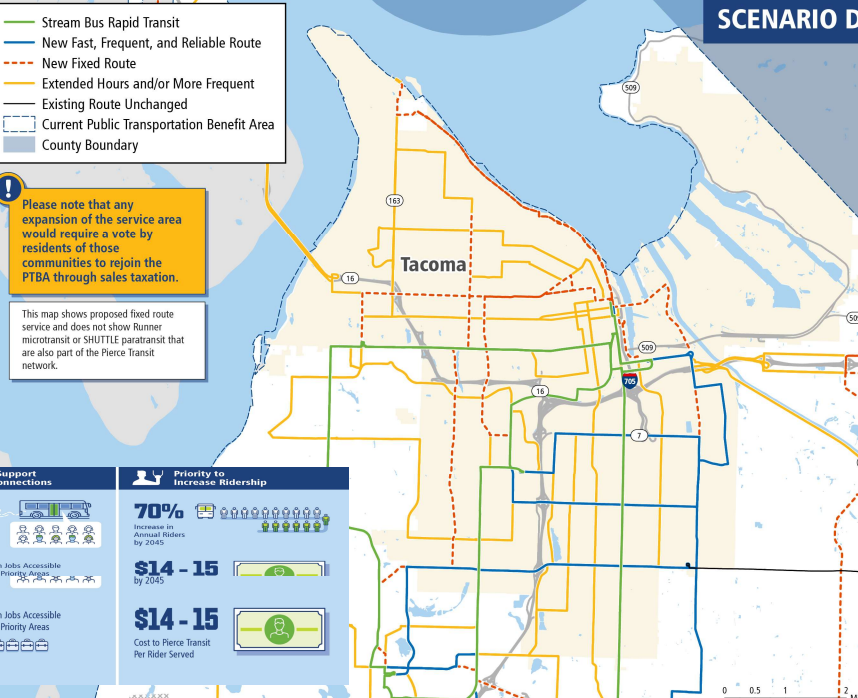
3



## Growth Scenarios

Associated maps show type of service and where service improvements occur for existing and new routes.





**Stream Bus Rapid Transit**

**New Fast, Frequent, and Reliable Route**

**New Fixed Route**

**Extended Hours and/or More Frequent**

**Existing Route Unchanged**

**Current Public Transportation Benefit Area**

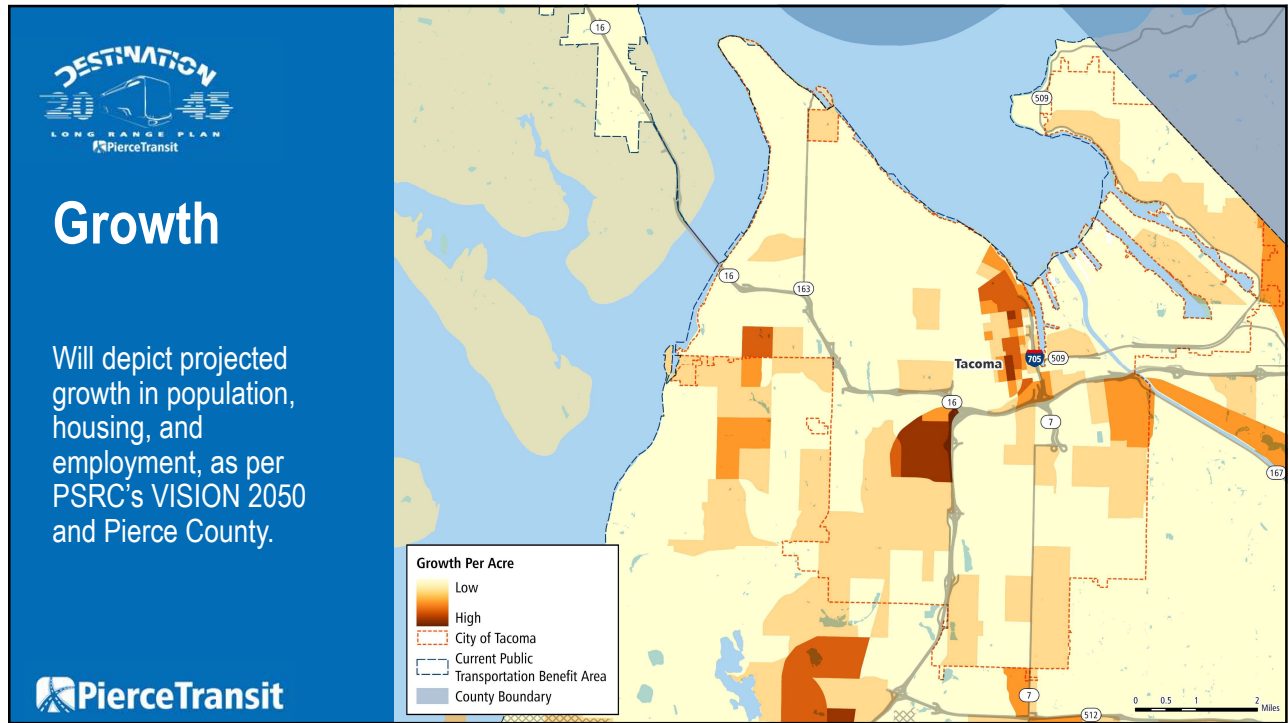
**County Boundary**

**Please note that any expansion of the service area would require a vote by residents of those communities to rejoin the PTBA through sales taxation.**

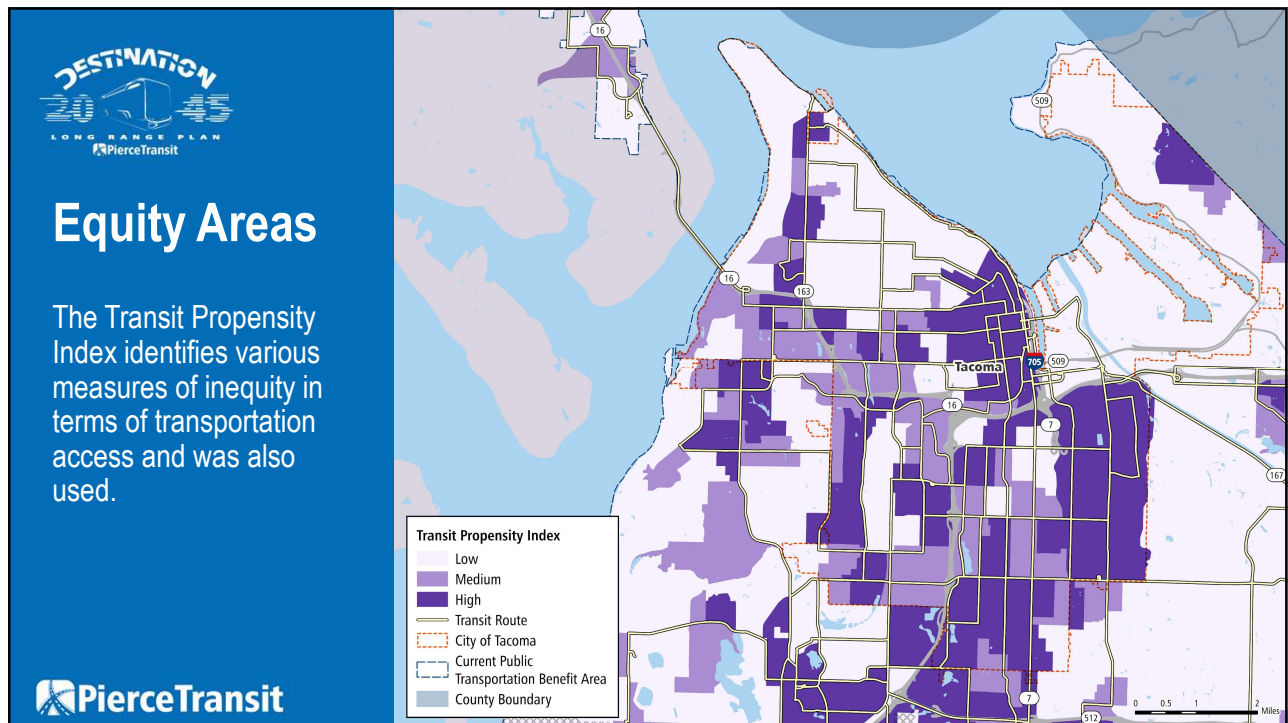
This map shows proposed fixed route service and does not show Runner microtransit or SHUTTLE paratransit that are also part of the Pierce Transit network.

Priority to Support Essential Connections	Priority to Increase Ridership
<p><b>40%</b> Of Priority Populations with Access to 20-minute or Better Service</p>	<p><b>70%</b> Increase in Annual Riders by 2045</p>
<p><b>60%</b> Increase in Jobs Accessible for Equity Priority Areas or Better Service</p>	<p><b>\$14 - 15</b> by 2045</p>
<p><b>60%</b> Increase in Jobs Accessible for Equity Priority Areas</p>	<p><b>\$14 - 15</b> Cost to Pierce Transit Per Rider Served</p>

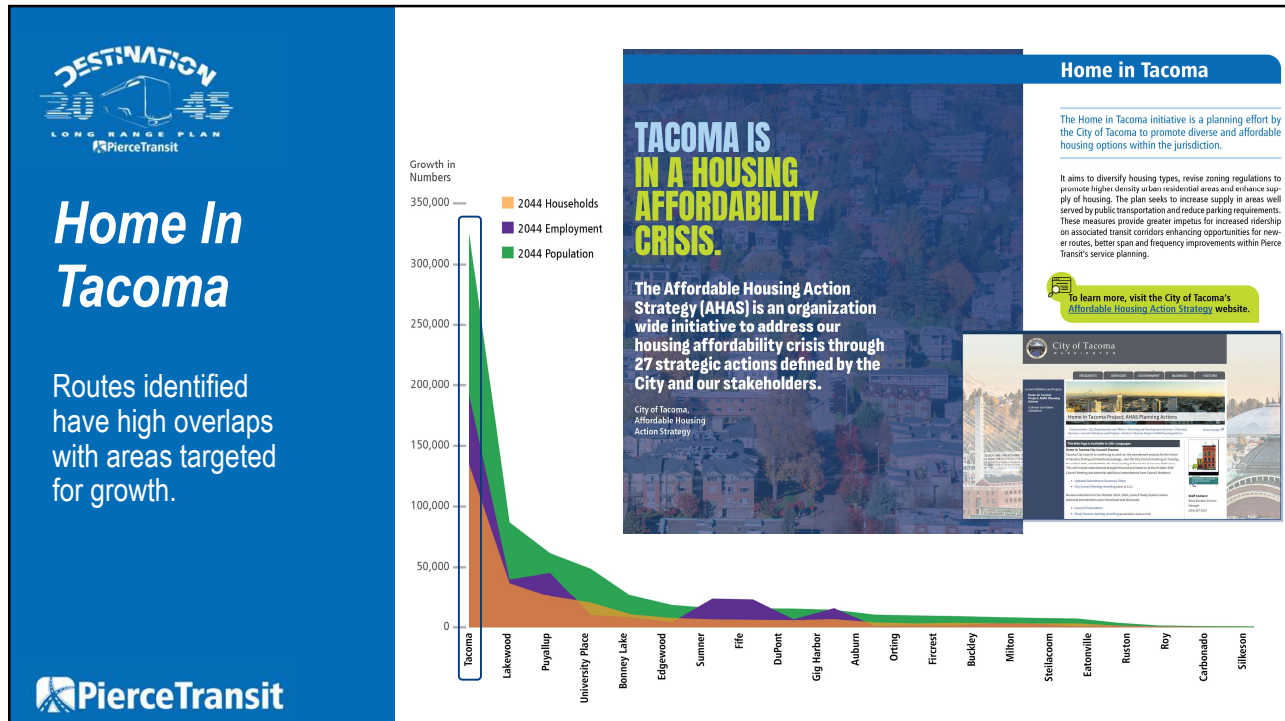
4



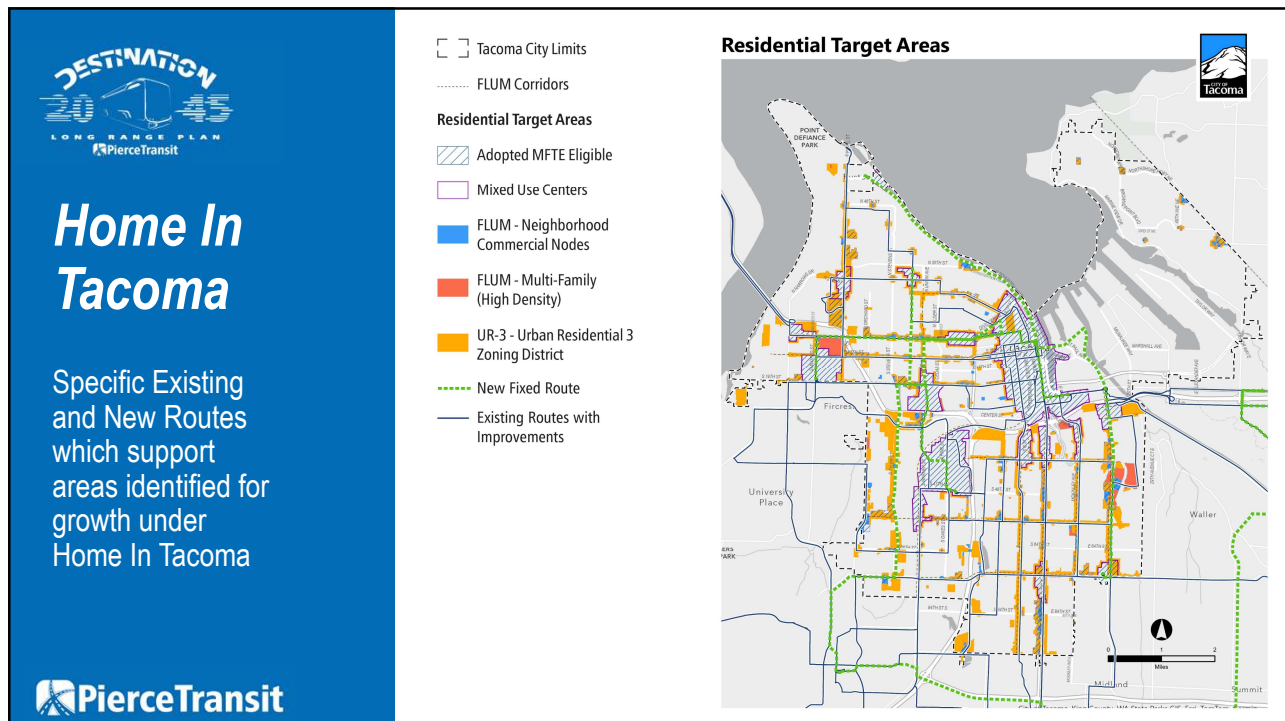
5



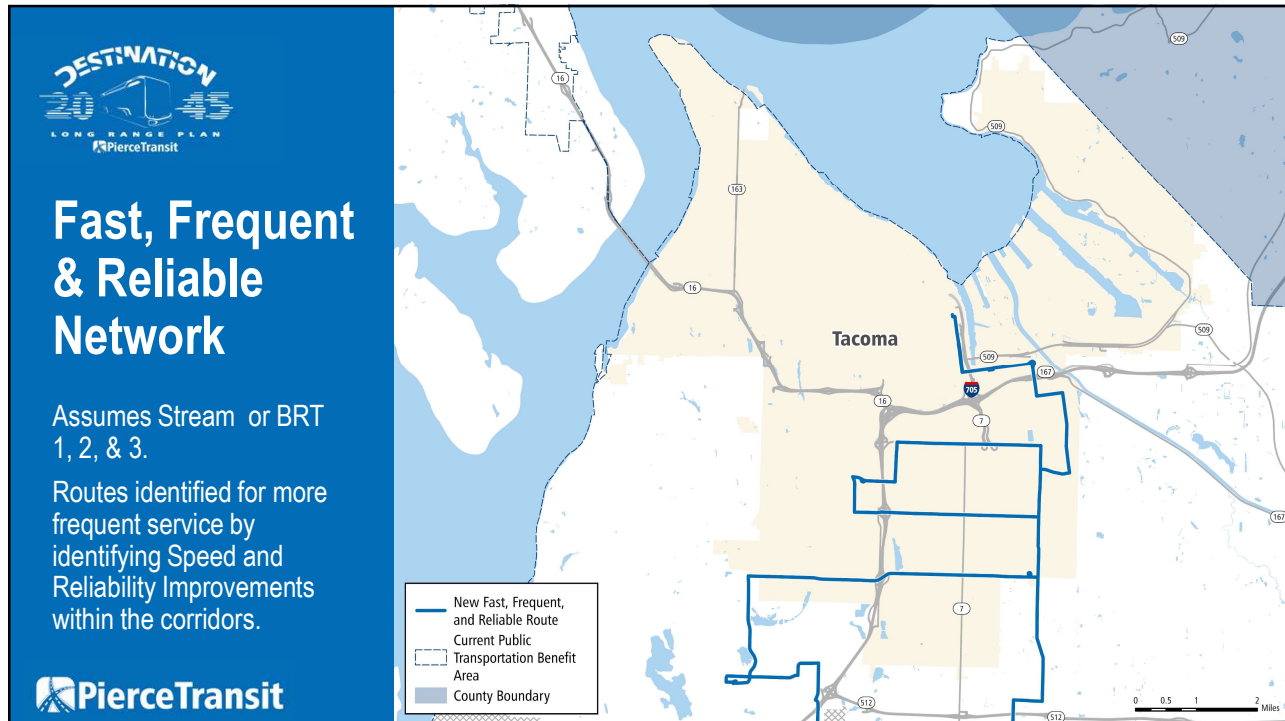
6



7



8



9



10



11