
MAY

TACOMA RAIL

2018

**FINANCIAL
REPORT**



Public Utility Board

MONIQUE TRUDNOWSKI

Chair

WOODROW JONES

Vice-Chair

KAREN LARKIN

Secretary

BRYAN FLINT

Member

MARK PATTERSON

Member

LINDA MCCREA

Interim Director of Utilities/CEO

DALE KING

Rail Superintendent

ANDREW CHERULLO

Finance Director

DEPARTMENT OF PUBLIC UTILITIES

CITY OF TACOMA

CITY OF TACOMA, WASHINGTON
DEPARTMENT OF PUBLIC UTILITIES, BELT LINE DIVISION
Doing Business As

TACOMA RAIL

TABLE OF CONTENTS

Note: These financial statements are interim, unaudited reports prepared primarily for the use of management. Not all transactions reported in these statements have been recorded on the full accrual basis of accounting or in accordance with generally accepted accounting principles.

STATEMENTS OF NET POSITION	1 - 2
STATEMENTS OF REVENUES, EXPENSES AND CHANGES IN NET POSITION	3 - 4
SUMMARY OF SWITCHING REVENUES AND SWITCHING ACTIVITIES	5 - 6
SUPPLEMENTAL DATA	8 - 12

CITY OF TACOMA, WASHINGTON
DEPARTMENT OF PUBLIC UTILITIES
TACOMA RAIL

STATEMENTS OF NET POSITION

ASSETS	MAY 31,	
	2018	2017
CAPITAL ASSETS		
Road and Equipment Property	\$46,585,758	\$44,810,789
Less Accumulated Depreciation	(20,782,466)	(19,529,282)
Total	25,803,292	25,281,507
Construction Work in Progress	386,634	2,639,067
Net Capital Assets	26,189,926	27,920,574
CURRENT ASSETS		
Cash & Equity in Pooled Investments	10,621,201	10,954,869
Customer Accounts Receivable	3,351,875	3,084,910
Prepayments	473,495	1,595,824
Materials and Supplies Inventory.....	1,233,065	1,040,038
Total Current Assets	15,679,636	16,675,641
TOTAL ASSETS	\$41,869,562	\$44,596,215

These statements should be read in conjunction with the Notes to Financial Statements contained in the 2017 Annual Report.

NET POSITION AND LIABILITIES	<u>MAY 31,</u> 2018	<u>MAY 31,</u> 2017
NET POSITION		
Net Investment in Capital Assets.....	\$20,392,117	\$21,613,974
Unrestricted	<u>9,109,397</u>	<u>8,441,171</u>
TOTAL NET POSITION	29,501,514	30,055,145
LONG-TERM DEBT, NET OF CURRENT MATURITIES		
State Loans.....	<u>4,977,559</u>	<u>5,517,496</u>
Total Long-Term Liabilities	4,977,559	5,517,496
CURRENT LIABILITIES		
Accounts Payable	523,816	805,343
Wages Payable	576,987	550,978
Unemployment and other Tax Payables	311,063	253,816
Volume Incentive Payable	-	2,500,001
Current Portion of Long Term Debt	820,250	789,104
Current Portion of Compensated Absences	<u>112,418</u>	<u>111,516</u>
Total Current Liabilities	2,344,534	5,010,758
LONG-TERM LIABILITIES		
On the Job Injury Reserve	836,788	768,249
Long Term Portion of Compensated Absences	1,011,762	1,003,644
Other Long-Term Liabilities	<u>3,197,405</u>	<u>2,240,923</u>
Total Long-Term Liabilities	5,045,955	4,012,816
TOTAL LIABILITIES	<u>12,368,048</u>	<u>14,541,070</u>
TOTAL NET POSITION AND LIABILITIES	<u><u>\$41,869,562</u></u>	<u><u>\$44,596,215</u></u>

CITY OF TACOMA, WASHINGTON
DEPARTMENT OF PUBLIC UTILITIES
TACOMA RAIL

STATEMENTS OF REVENUE, EXPENSES AND CHANGES IN NET POSITION

	<u>MAY</u> <u>2018</u>	<u>MAY</u> <u>2017</u>
OPERATING REVENUES		
Switching Revenues	\$2,366,348	\$2,152,054
Demurrage and Other Operating Revenues	463,570	383,454
Total Operating Revenues	<u>2,829,918</u>	<u>2,535,508</u>
OPERATING EXPENSES		
Maintenance of Way and Structures		
Salaries and Wages	76,530	75,282
Supplies and Expense	133,188	111,565
Mechanical		
Salaries and Wages	152,695	170,445
Supplies and Expense	350,513	291,077
Operations		
Salaries and Wages	784,571	860,753
Supplies and Expense	139,484	238,323
Administration		
Salaries and Wages	224,198	200,676
Supplies and Expense	275,316	299,550
Taxes - State	39,588	35,806
Depreciation	144,789	136,880
Total Operating Expenses	<u>2,320,872</u>	<u>2,420,357</u>
Net Operating Income	509,046	115,151
NON-OPERATING REVENUES (EXPENSES)		
Interest Income	11,764	8,122
Miscellaneous	77,433	80,128
Interest Expense	-	-
Total Non-Operating Revenues	<u>89,197</u>	<u>88,250</u>
Contributions - Grants	-	-
Transfers		
City of Tacoma Gross Earnings Tax	(233,529)	(213,150)
CHANGE IN NET POSITION	<u>\$364,714</u>	<u>(\$9,749)</u>
TOTAL NET POSITION - JANUARY 1		
TOTAL NET POSITION - MAY 31		

These statements should be read in conjunction with the Management Discussion and Analysis in the March 2018 Financial Report.

YEAR TO DATE

MAY 31, 2018	MAY 31, 2017	2018/2017 VARIANCE	PERCENT CHANGE
\$11,234,073	\$12,279,427	(\$1,045,354)	-8.5%
<u>2,007,109</u>	<u>1,753,834</u>	<u>253,275</u>	14.4%
13,241,182	14,033,261	(792,079)	-5.6%
377,149	429,241	(52,092)	-12.1%
693,293	432,719	260,574	60.2%
771,697	824,644	(52,947)	-6.4%
1,533,800	1,357,860	175,940	13.0%
3,976,156	4,330,683	(354,527)	-8.2%
574,221	699,596	(125,375)	-17.9%
1,121,997	1,000,105	121,892	12.2%
1,437,923	2,395,432	(957,509)	-40.0%
186,326	195,900	(9,574)	-4.9%
<u>723,943</u>	<u>681,988</u>	<u>41,955</u>	6.2%
11,396,505	12,348,168	(951,663)	-7.7%
1,844,677	1,685,093	159,584	9.5%
104,621	60,842	43,779	72.0%
487,168	374,407	112,761	30.1%
-	(6)	6	-100.0%
<u>591,789</u>	<u>435,243</u>	<u>156,546</u>	36.0%
-	36,254	(36,254)	100.0%
(1,102,327)	(1,135,343)	33,016	-2.9%
1,334,139	1,021,247	\$312,892	30.6%
<u>28,167,375</u>	<u>29,033,898</u>		
<u><u>\$29,501,514</u></u>	<u><u>\$30,055,145</u></u>		

CITY OF TACOMA, WASHINGTON
DEPARTMENT OF PUBLIC UTILITIES
TACOMA RAIL

SUMMARY OF SWITCHING REVENUES AND SWITCHING ACTIVITIES
MAY 31, 2018 AND MAY 31, 2017

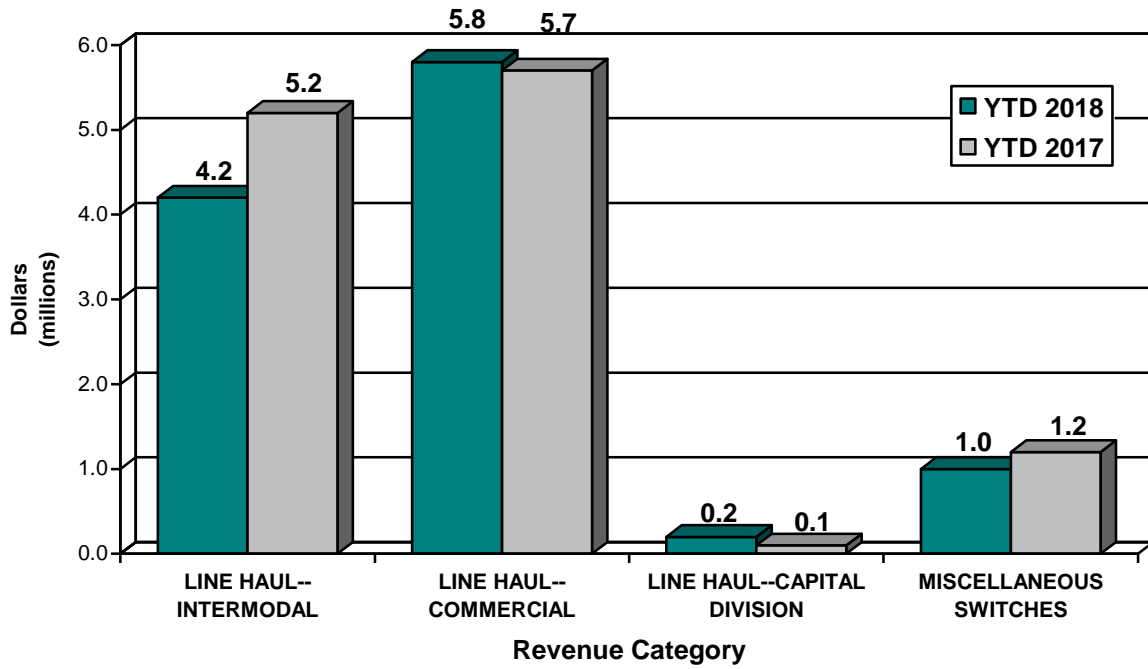
	<u>May 2018</u>	<u>May 2017</u>
SWITCHING REVENUES		
LINE HAULS--INTERMODAL	\$945,766	\$784,370
LINE HAULS--COMMERCIAL	1,220,195	1,093,765
LINE HAULS--CAPITAL DIVISION	48,450	37,980
MISCELLANEOUS SWITCHES	<u>151,937</u>	<u>235,939</u>
TOTAL SWITCHING REVENUES	<u><u>\$2,366,348</u></u>	<u><u>\$2,152,054</u></u>
 SWITCHING ACTIVITIES (CARS)		
LINE HAULS--INTERMODAL	5,582	4,557
LINE HAULS--COMMERCIAL	2,431	2,426
LINE HAULS--CAPITAL DIVISION	85	91
MISCELLANEOUS SWITCHES	<u>773</u>	<u>1,462</u>
TOTAL CARS SWITCHED	<u><u>8,871</u></u>	<u><u>8,536</u></u>

YEAR TO DATE			
May 31, 2018	May 31, 2017	2018/2017 VARIANCE	PERCENT CHANGE
\$4,238,862	\$5,248,060	(\$1,009,198)	-19.2%
5,792,215	5,700,635	91,580	1.6%
185,430	124,373	61,057	49.1%
<u>1,017,566</u>	<u>1,206,359</u>	<u>(188,792)</u>	<u>-15.6%</u>
<u>\$11,234,073</u>	<u>\$12,279,427</u>	<u>(\$1,045,353)</u>	<u>-8.5%</u>
25,078	30,588	(5,510)	-18.0%
11,368	12,401	(1,033)	-8.3%
343	298	45	15.1%
<u>6,279</u>	<u>7,213</u>	<u>(934)</u>	<u>-12.9%</u>
<u>43,068</u>	<u>50,500</u>	<u>(7,432)</u>	<u>-14.7%</u>

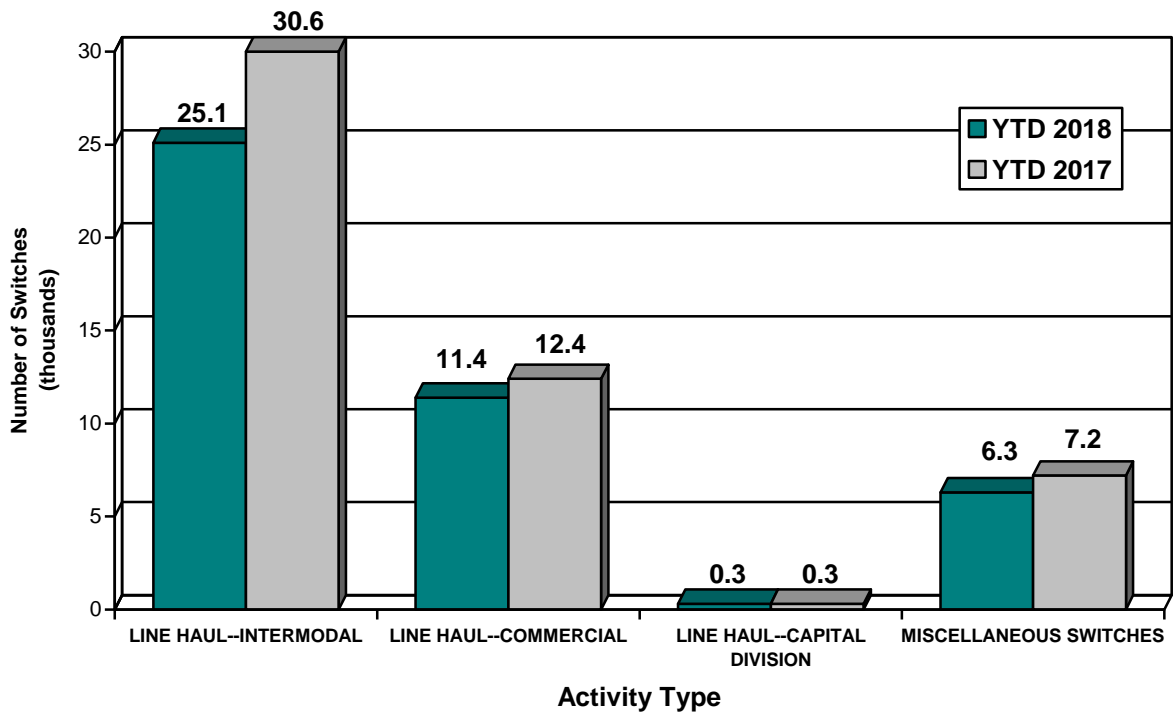
This page has been left blank intentionally.

Supplemental Data

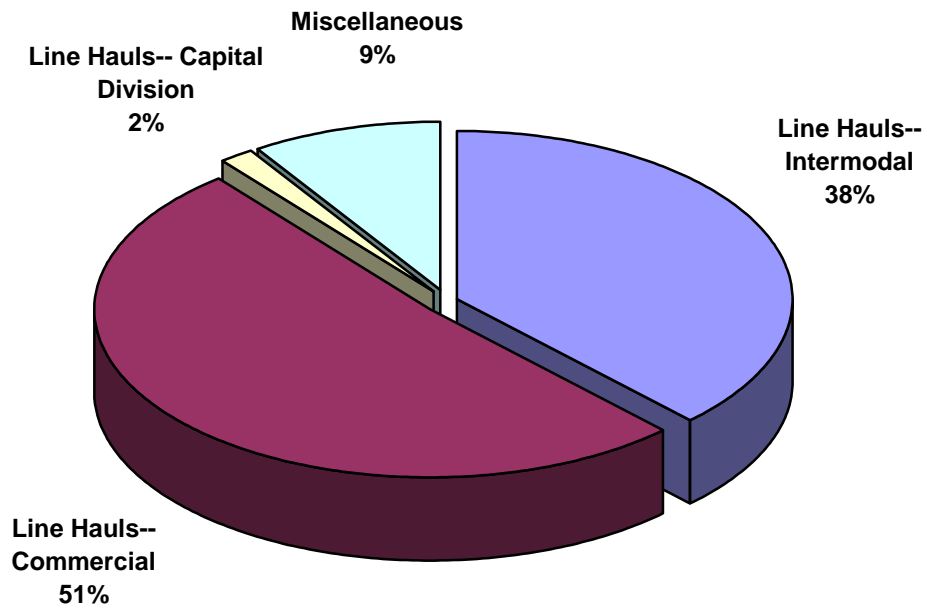
SWITCHING REVENUES
Year to Date - May 2018 & 2017



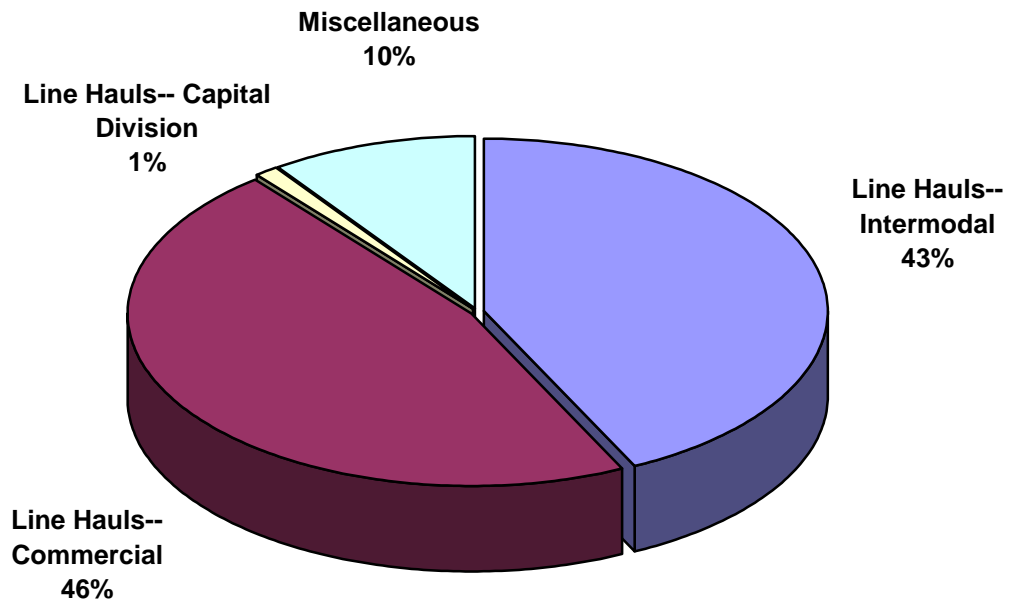
SWITCHING ACTIVITIES
Year to Date - May 2018 & 2017



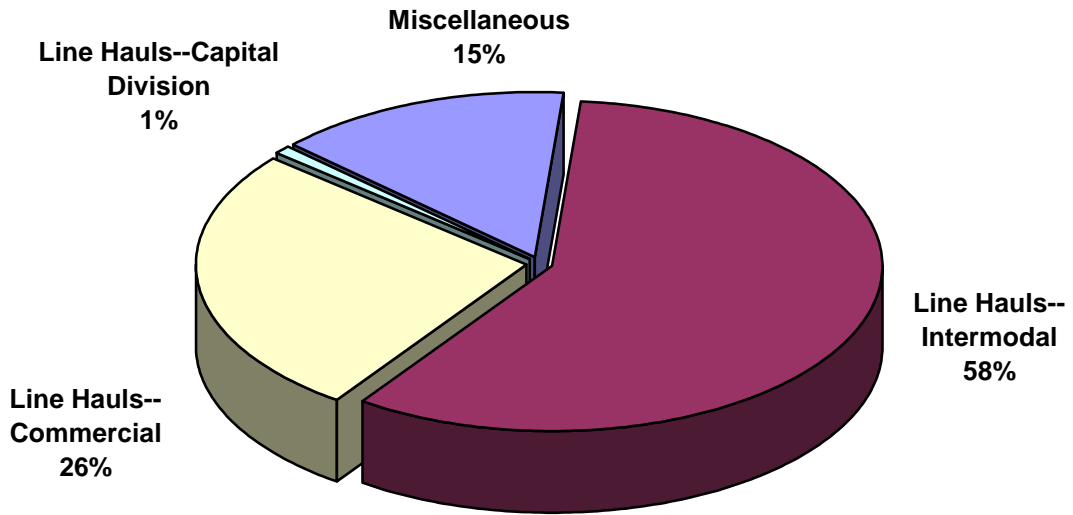
SWITCHING REVENUES
Year to Date - May 2018 (\$11,234,073)



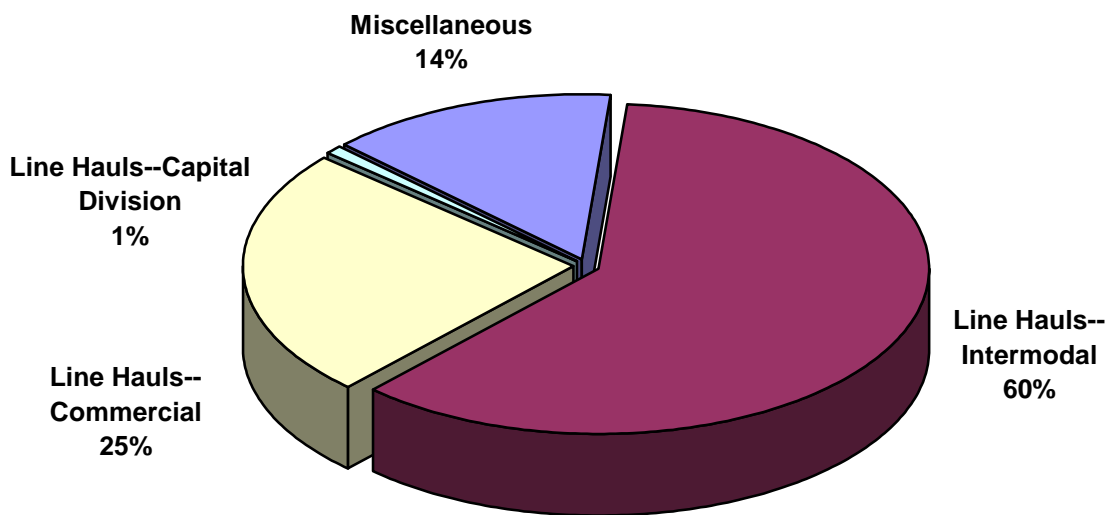
SWITCHING REVENUES
Year to Date - May 2017 (\$12,279,427)



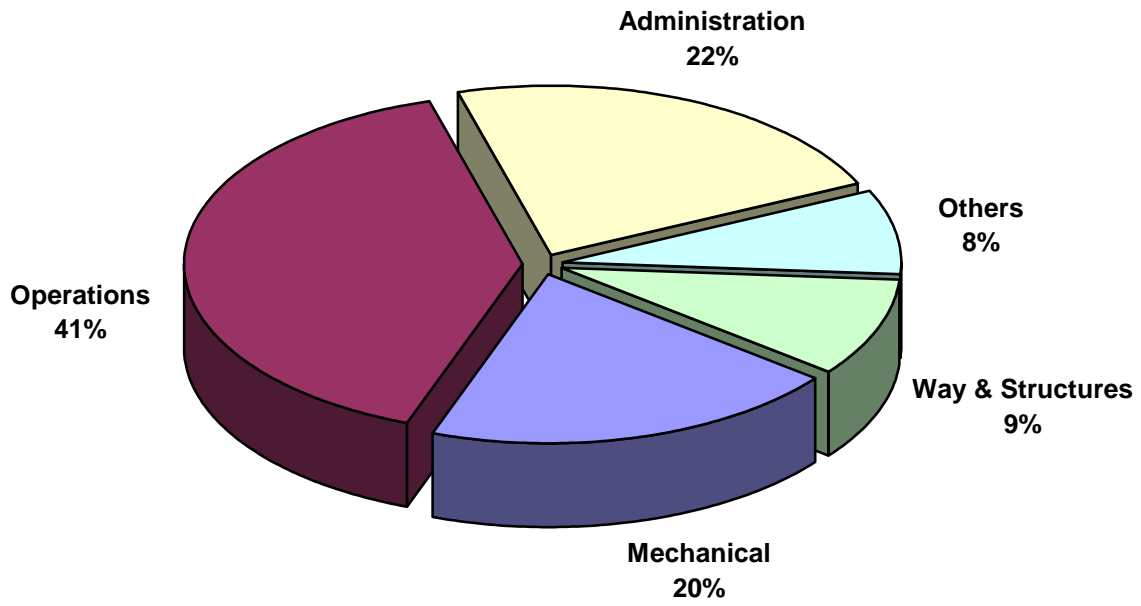
SWITCHING ACTIVITY
Year to Date - May 2018 (43,068 cars)



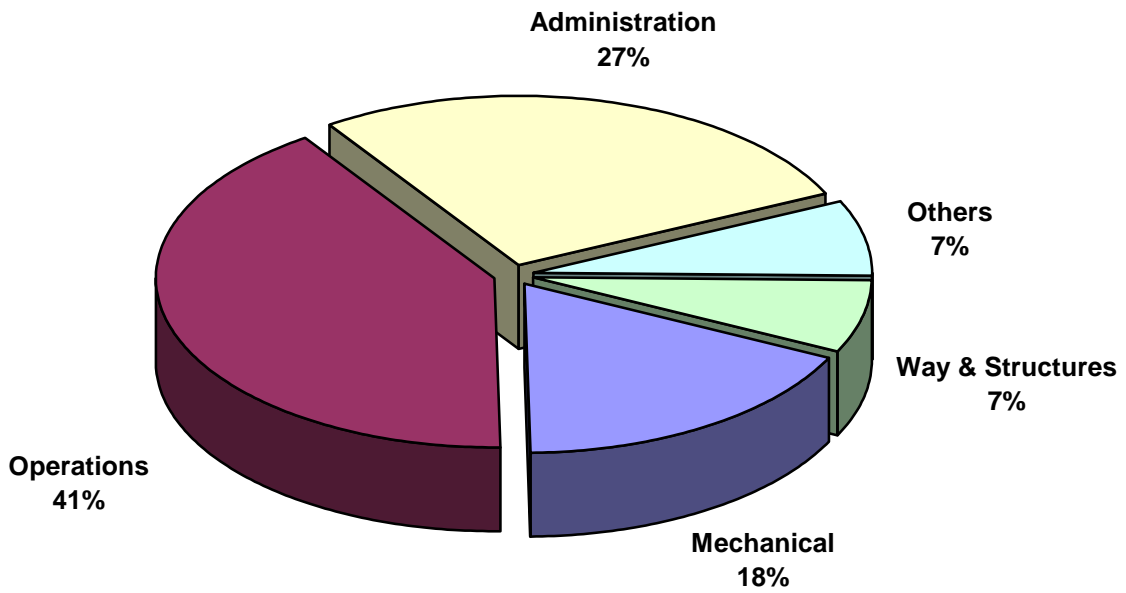
SWITCHING ACTIVITY
Year to Date - May 2017 (50,500 cars)



TOTAL OPERATING EXPENSES
Year to Date - May 2018 (\$11,396,505)



TOTAL OPERATING EXPENSES
Year to Date - May 2017 (\$12,348,168)





The City of Tacoma does not discriminate on the basis of disability in any of its programs, activities, or services. To request this information in an alternative format or to request a reasonable accommodation, please contact the City Clerk's Office at (253) 591-5505. TTY or speech to speech users please dial 711 to connect to Washington Relay Services.