
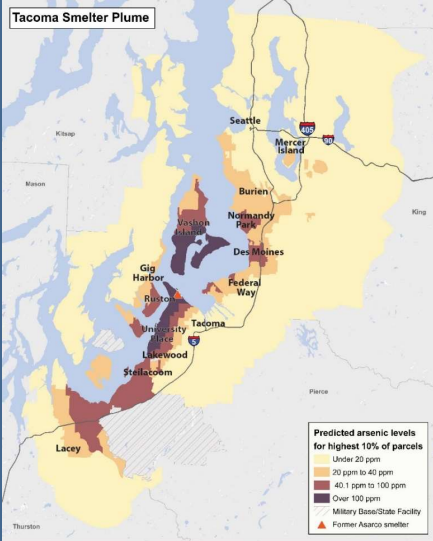


## Tacoma Smelter Plume Yard Program Update

July 23, 2024  
Marian Abbett, Justin Zakoren and Sarah Miller



1



## Tacoma Smelter Plume

2

### What are the health risks from arsenic and lead?

Arsenic and lead can contribute to poor health, especially in children. Children are more sensitive because their bodies are smaller and still developing.

**Lead can cause developmental disabilities in children and can permanently lower I.Q.**



**Arsenic can contribute to cancer, diabetes and heart disease later in life.**

### Ways people can be exposed



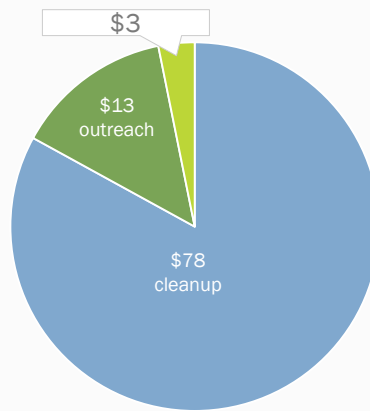
## Healthy Actions



59

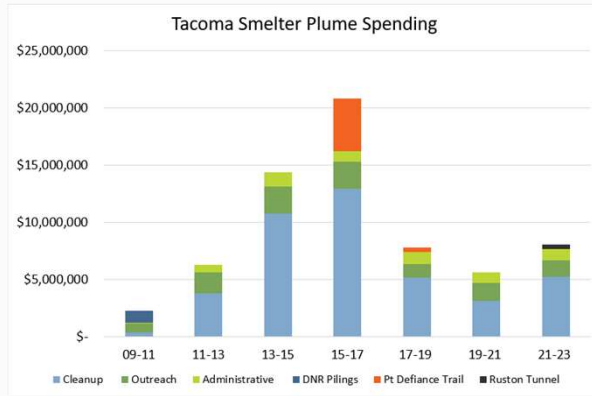
## Tacoma Smelter Plume settlement breakdown

Original breakdown of the \$94.6 million Asarco settlement for the future cost of cleaning up the Tacoma Smelter Plume.



60

## Tacoma Smelter Plume spending



7



The Health Department:  
outreach & education

8

## Working with residents to cover bare patches of soil

**Do Kids Play in Your Yard?**

**Get covered with FREE mulch!**

Kids play outside and get dirty. Cover bare patches of soil to protect them from arsenic and lead. Help them stay healthy. Contact us and we will deliver:

- A free toolkit with resources.
- How-to instructions.
- Two FREE bags of splinter-free cedar play chip mulch. Supplies are limited.

Learn how easy and inexpensive it is to get covered. Sign up now for a toolkit at [dirtalert.info/get-covered](http://dirtalert.info/get-covered)

**Questions?**

Contact: Chris at [cmatten@tpchd.org](mailto:cmatten@tpchd.org) or (253) 549-1853. Learn more about arsenic and lead in soil at [tpchd.org/dirtalert](http://tpchd.org/dirtalert)

[tpchd.org](http://tpchd.org)

9

## Outreach to community garden organizations

**Live nearby?**

Lead and arsenic from the former Tacoma Smelter *may be* in your soil.

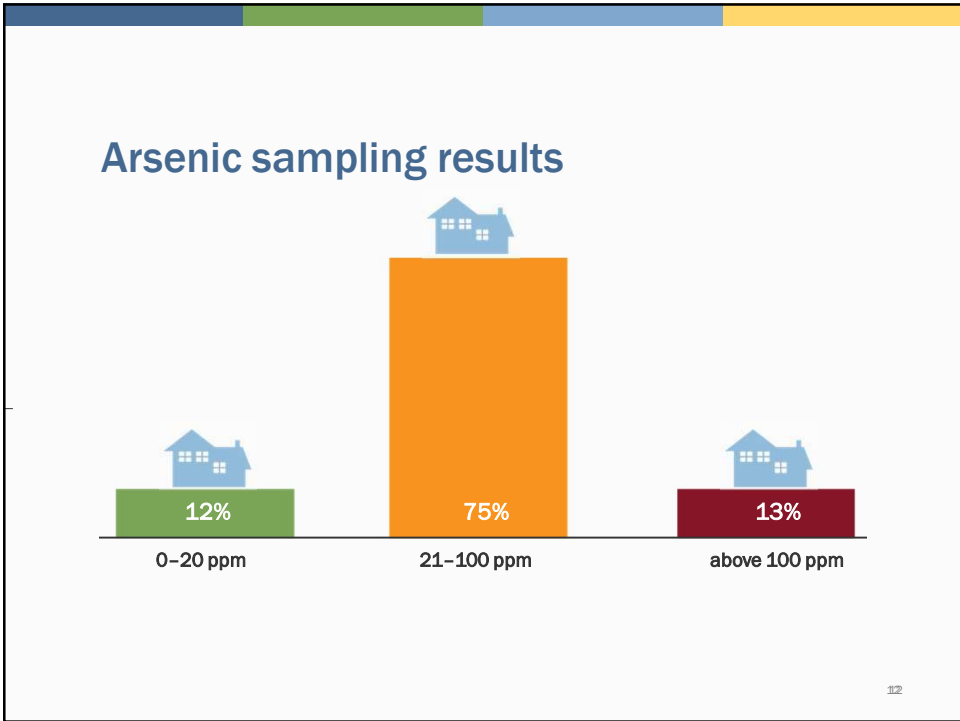
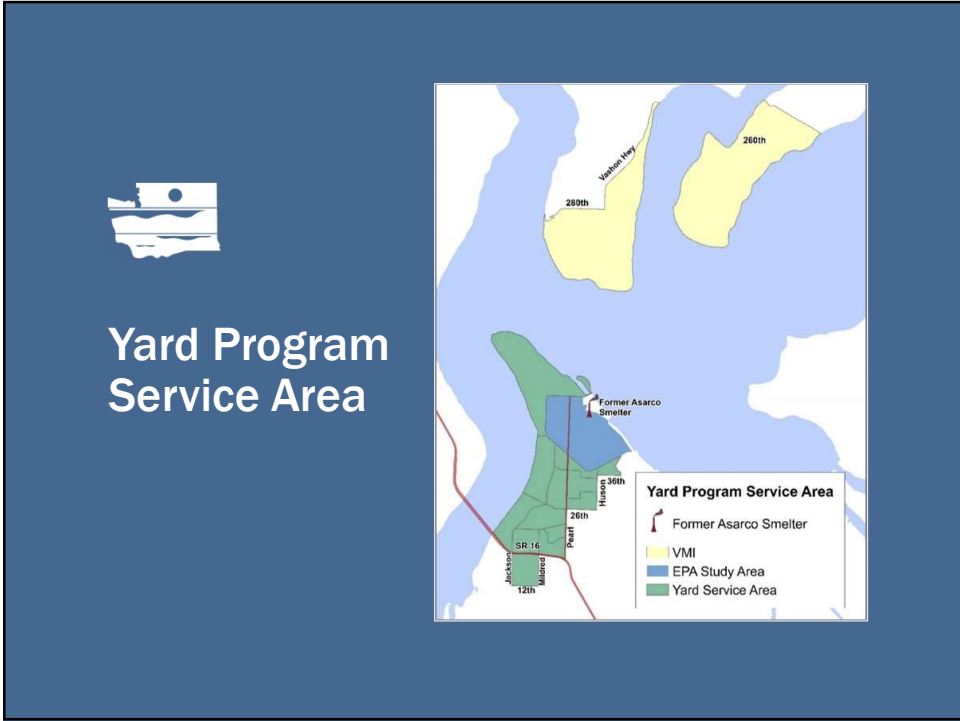
Tacoma Smelter 1890-1985

**Keep your family and pets healthy.**

Practice healthy actions to reduce exposure to lead and arsenic. Learn more and get safe gardening tips at [tpchd.org/dirtalert](http://tpchd.org/dirtalert).

Community Garden sign

10



## 2024 Yard Program: 359 yards replaced



113

## Soil replacement

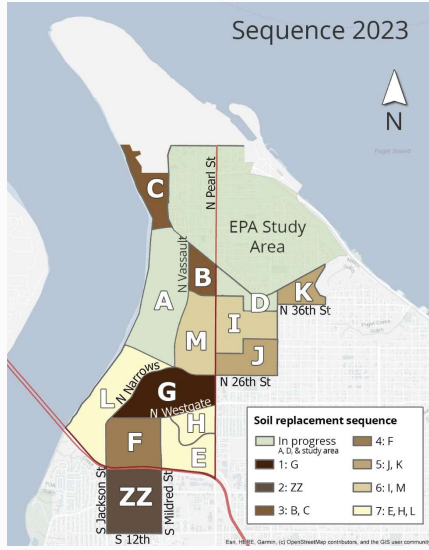


14

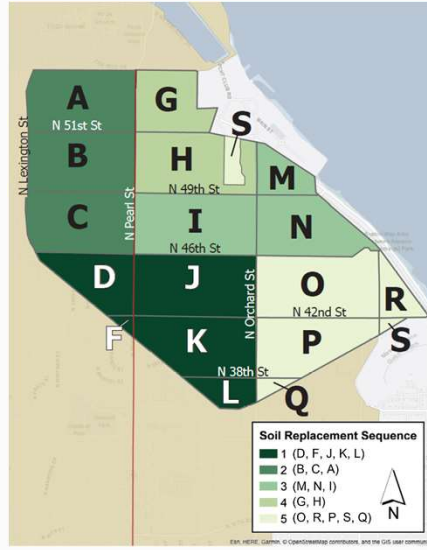
MS(2)

# Prioritizing Cleanup

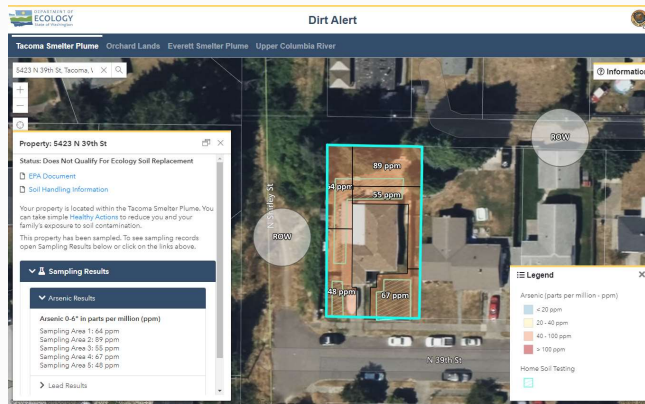
## Outside Study Area



## Inside Study Area



# Dirt Alert map



[apps.ecology.wa.gov/dirtalert](https://apps.ecology.wa.gov/dirtalert)



## Slide 15

---

**MS(0)** Remove? Or simplify? Highlight EH disparities?

Miller, Sarah (ECY), 2024-06-14T21:16:55.630

**JZ0 0** Simplify. Something like: In 2023 we updated our cleanup sequence for qualifying properties outside of the study area. In this update, we incorporated the WA Dept of Health's Environmental Health Disparities Map information into our evaluation, alongside our sampling data for this area. By broadening our evaluation, we are better able to prioritize cleanup for neighborhoods with the highest contamination and experiencing the highest environmental health disparities.

Zakoren, Justin (ECY), 2024-06-27T00:35:47.125

**MS(1)** Could we change this slide to show a map with demographic info on the groups that have moved up? Do we have any timeframes we could share about when we hope to get to these groups?

Miller, Sarah (ECY), 2024-06-14T22:22:56.688

**JZ1 0** I recommend not sharing timeline information--this will change. We can share number of properties; this will change less year to year.

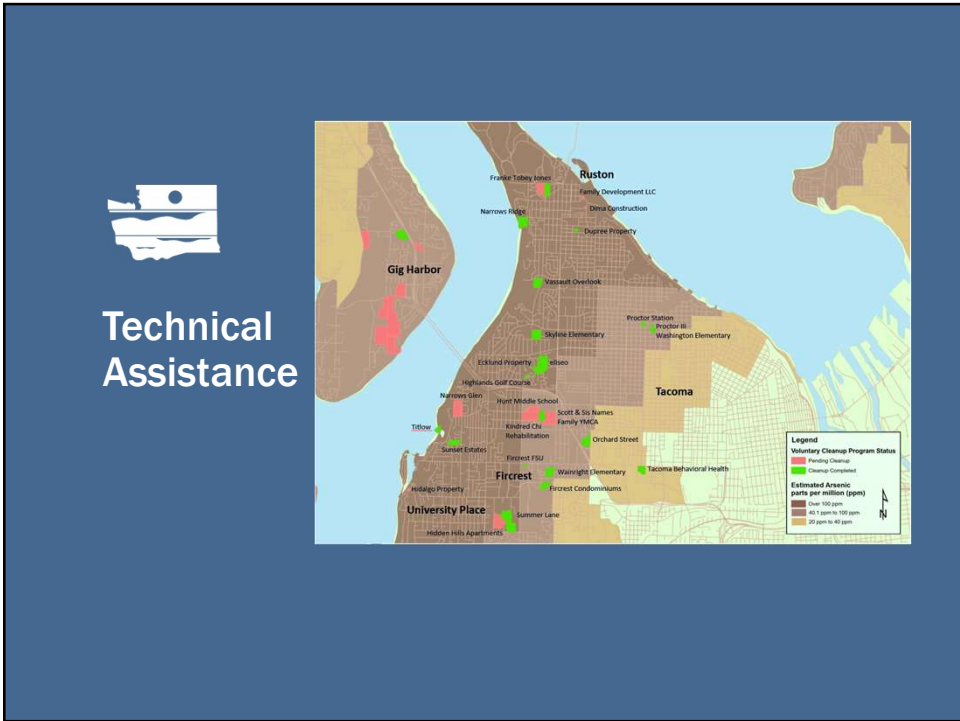
Zakoren, Justin (ECY), 2024-06-27T00:38:10.941

**JZ1 1** We could show EHD results for same area, side-by-side with the 20203 sequence map. Might need to create a better map than the chunky one we've used before.

Zakoren, Justin (ECY), 2024-06-27T00:39:26.766

**MS(2)** Justin will rewrite notes and switch out map

Miller, Sarah (ECY), 2024-07-02T22:35:06.120



**Protecting human health for years to come**

Looking for sustainable solutions for

- New residents
- Development
- Outreach



## Thank you

### Yard Program or soil safety questions



Justin Zakoren  
Yard Program Remediation Manager  
Justin.Zakoren@ecy.wa.gov  
360-280-2676

[ecology.wa.gov/Tacoma-smelter](https://ecology.wa.gov/Tacoma-smelter)



### Soil sampling and health questions



Chris Matter, Environmental  
Health Specialist  
[Cmatter@tpchd.org](mailto:Cmatter@tpchd.org)  
253-649-1853

[tpchd.org/dirtalert](https://tpchd.org/dirtalert)