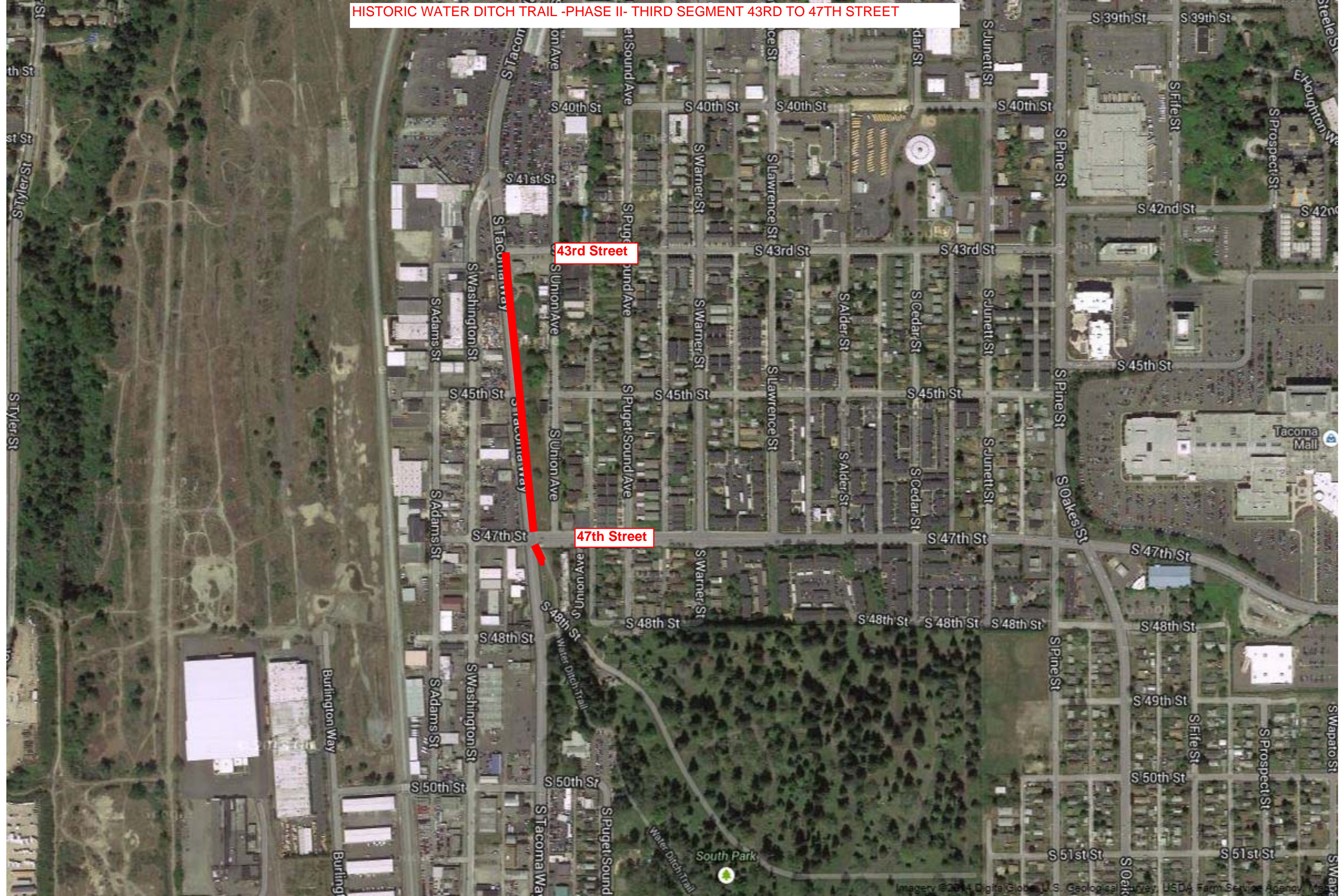


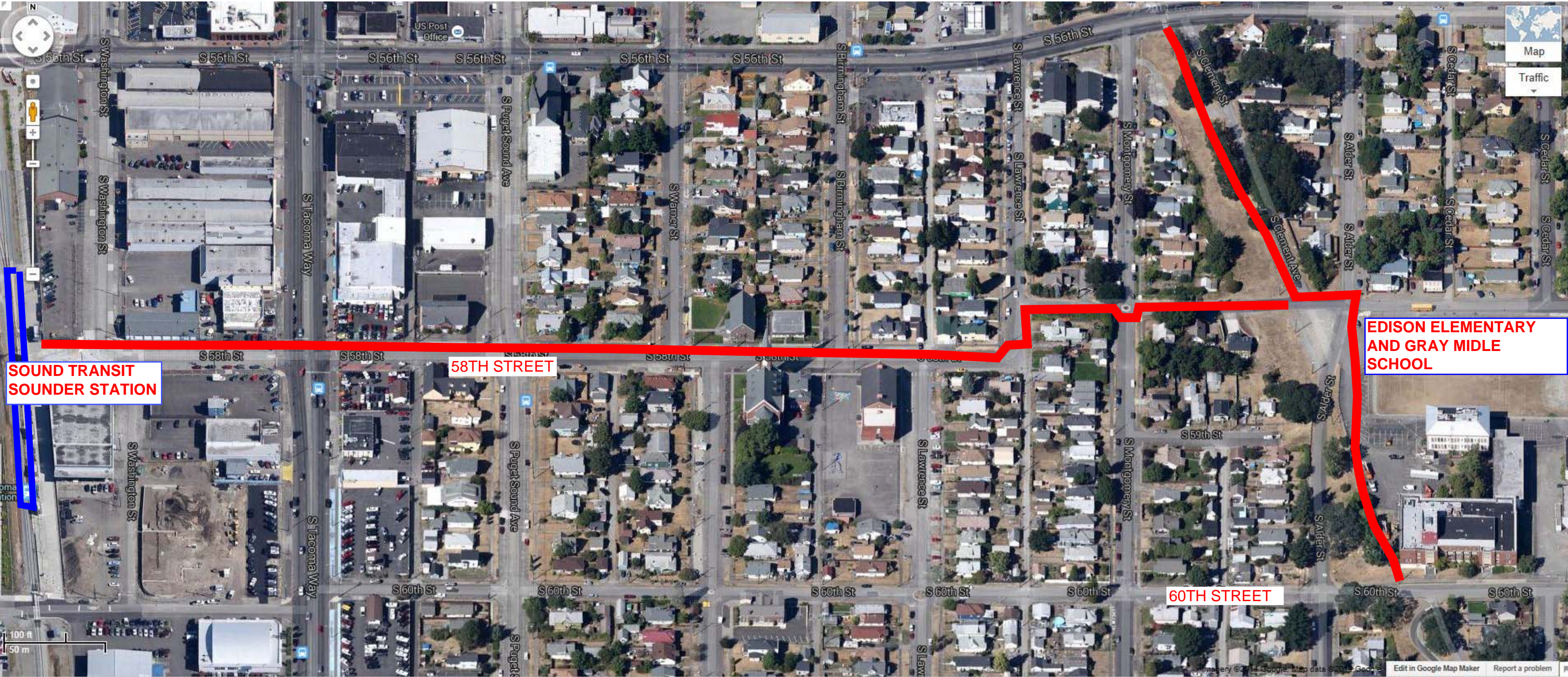
HISTORIC WATER DITCH TRAIL -PHASE II- THIRD SEGMENT 43RD TO 47TH STREET



43rd Street

47th Street

HISTORIC WATER DITCH TRAIL PHASE II  
SECOND SEGMENT



SOUND TRANSIT  
SOUNDER STATION

58TH STREET

EDISON ELEMENTARY  
AND GRAY MIDDLE  
SCHOOL

60TH STREET

100 ft  
50 m

Map  
Traffic

Edit in Google Map Maker Report a problem

HISTORIC WATER DITCH TRAIL PHASE II - SEGMENT 1 - OAK TREE



Arlington Elementary

S. 74th Street

Future Site of Oak Tree Park

S. 80th & South Tacoma Way

# WATER DITCH TRAIL PHASE II

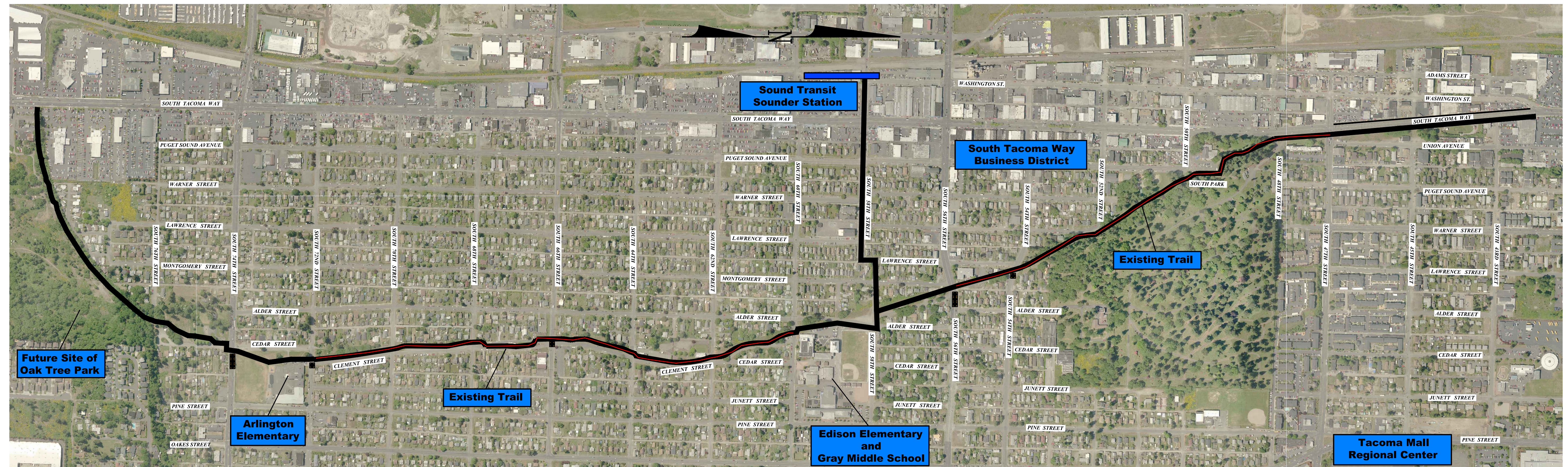


BEFORE

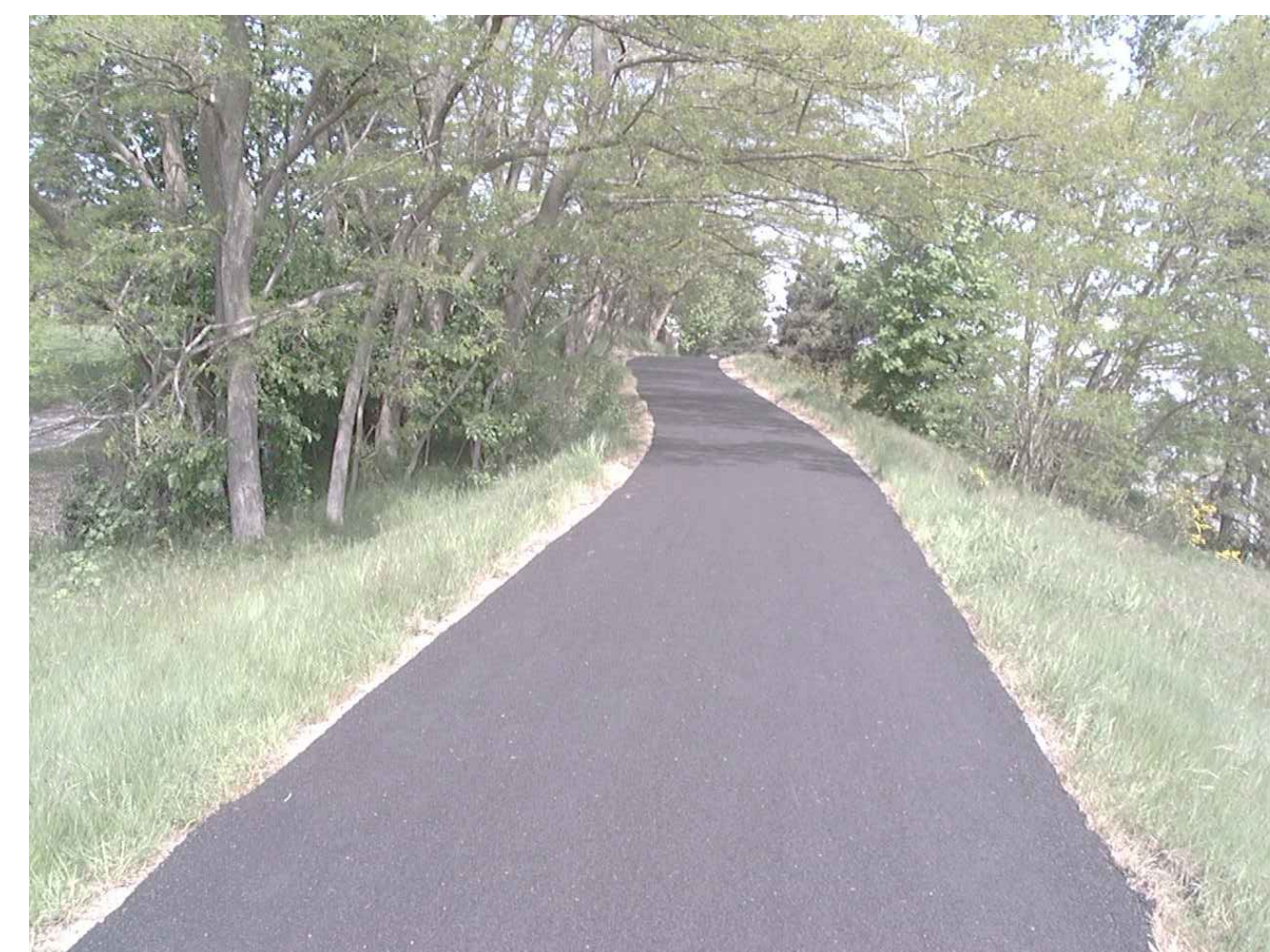


AFTER

# HISTORIC WATER DITCH TRAIL - PROJECT OVERVIEW



= PHASE II CONSTRUCTION  
 = PHASE I COMPLETED TRAIL



TRAIL - BUILT TO STANDARD  
(PHASE I CONSTRUCTION)



UNIMPROVED RIGHT OF WAY  
(PHASE II CONSTRUCTION)