

Interim Regulations on Recreational Marijuana

City of Tacoma
Planning and Development Services

City Council Public Hearing
October 22, 2013



State Rules

- Voter-approved Initiative 502
- WSLCB Adopted Rules
 - Tightly controlled market
 - Prevent diversion, illegal sales, and sales to minors
 - Reasonable access
 - Addresses production, processing, and retail



Local Response Options

❖ Licensing

- Under Consideration

❖ Enforcement

- Nuisance Code
- Public Safety Code (*adopted*)

❖ Land Use

- Interim Marijuana Regulations
- Also add Urban Horticulture



Marijuana Production & Processing

❖ Production

- Growing and cultivation

❖ Processing

- Converting raw marijuana into a retail product, packaging and labeling

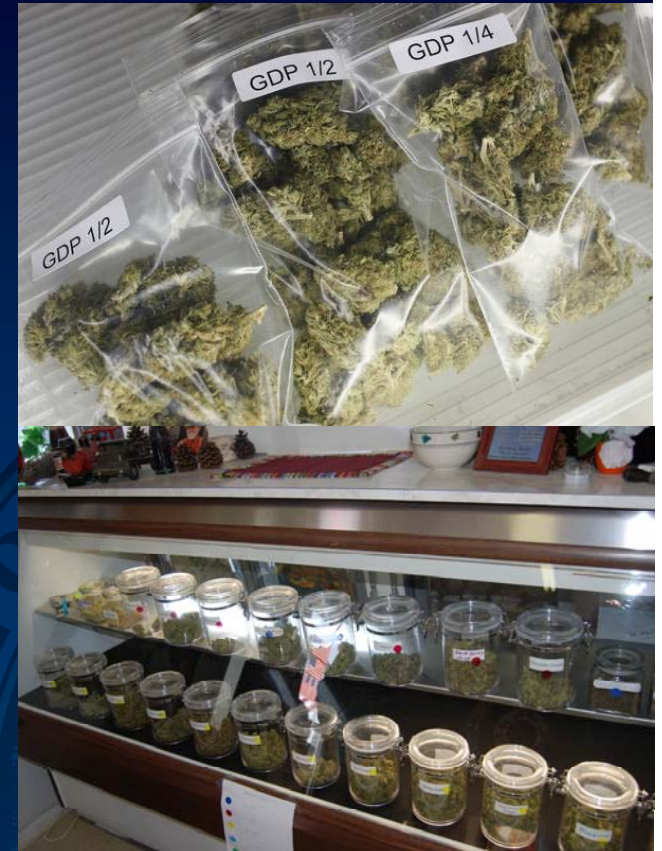
❖ Allow Outright in Intensive Industrial Zones

- PMI – Port Maritime Industrial District
- M-2 – Heavy Industrial District



Marijuana Retail

- ❖ **Retail sale of finished product**
 - Stand-alone marijuana retailer
 - Can include sale of marijuana paraphernalia
 - Maximum 8 retail outlets in Tacoma
- ❖ **Allow Outright in Commercial, Mixed-Use, and Industrial Zones**



Sensitive Use Buffering

❖ State Law:

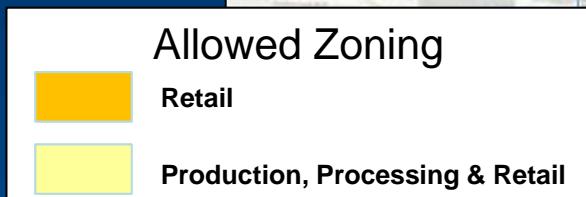
- 1,000-foot buffer
- Applies to all three types of marijuana uses
- Public parks, playgrounds, child care centers, recreation/ community centers, libraries, schools, game arcades, transit centers

❖ Additional Uses:

- Jails, correctional facilities
- Courthouses
- Drug/alcohol detox & treatment facilities



Preliminary Mapping



Schedule

Oct. 22 City Council public hearing

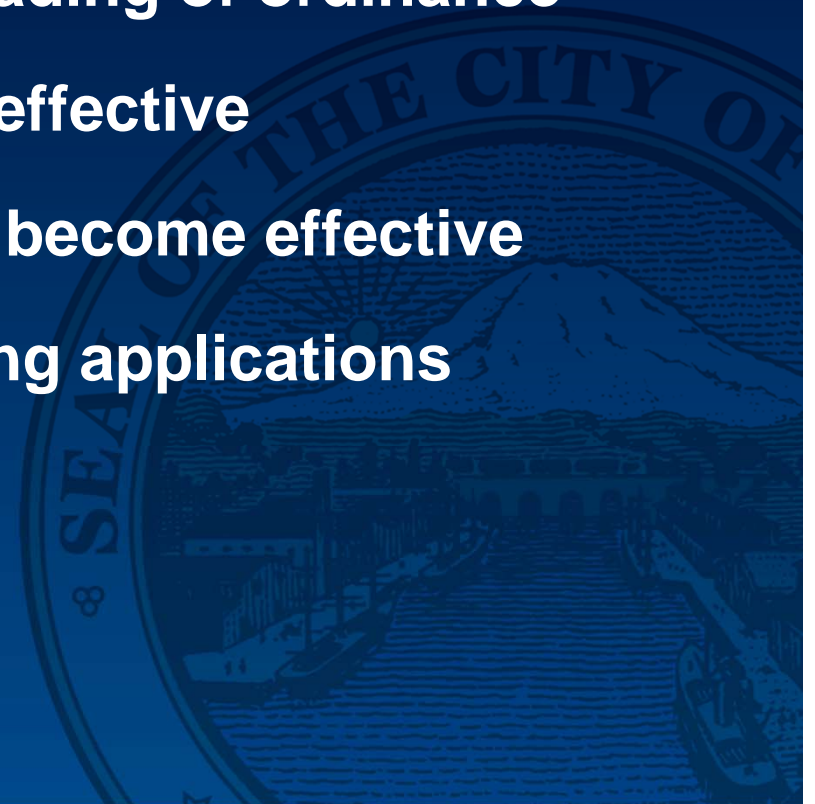
Oct. 29 City Council first reading of ordinance

Nov. 5 City Council final reading of ordinance

Nov. 16 LCB Rules become effective

Nov. 17 Interim Regulations become effective

Nov. 18 LCB begins accepting applications



Interim Regulations on Recreational Marijuana

City of Tacoma
Planning and Development Services

City Council Public Hearing
October 22, 2013

