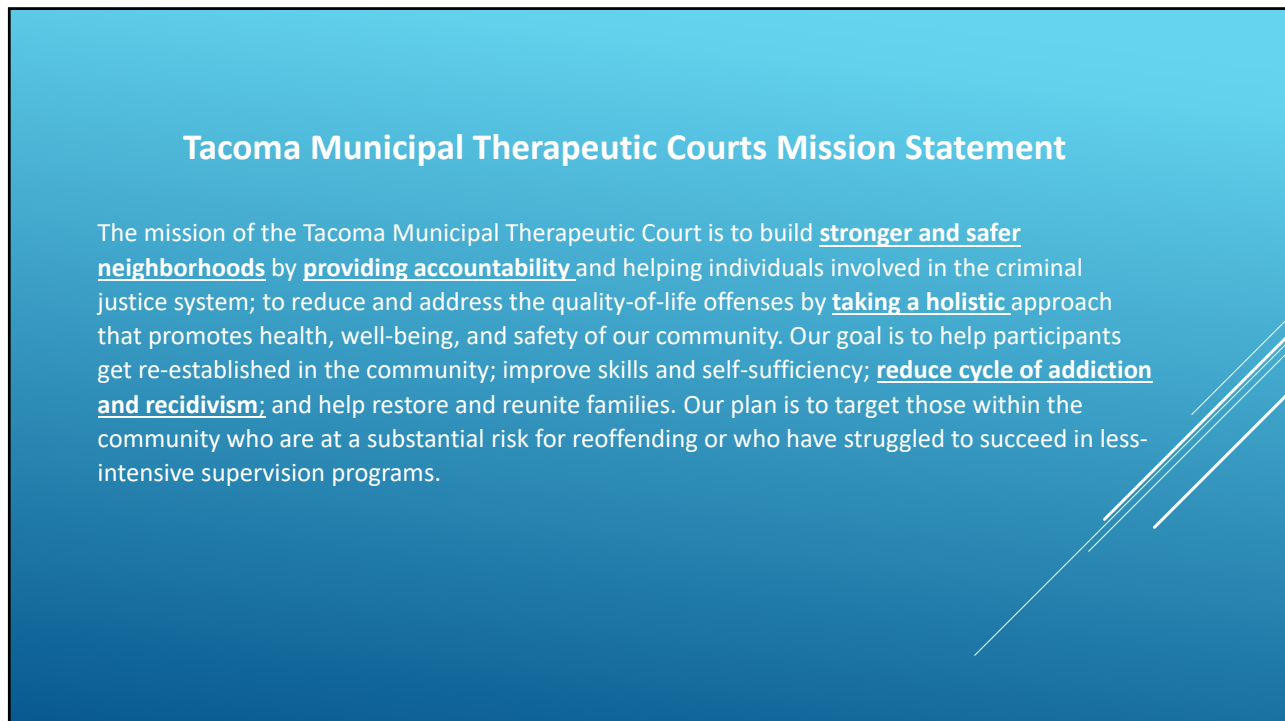




1



2

WHAT IS THERAPEUTIC COURT?

A specially designed court calendar or docket, the purpose of which are to achieve a reduction in recidivism and substance abuse among nonviolent substance abusing offenders and to increase the offender's likelihood of successful habilitation through early, continuous, and intense judicially supervised treatment.

3

History of dealing with defendants with Mental Health Issues

4

Standard For Competency To Stand Trial

- Able to understand proceedings against defendant and
- Able to assist attorney with defense

Prior to September 2015

- Long turn-around for in-custody competency evaluations
 - 16-41 days to complete

September 2015

Court/Legal/DAC – recognized need to have special calendar for defendants exhibiting issues with Mental Health.

- Team set up
- Pleadings and forms were updated
- Dedicated calendar – Wednesdays at 9:00 AM
 - Competency evaluation completed within 7 days – 14 days, depending on the demand
 - Those found not competent were referred for civil commitment.
 - Those found competent were retained for prosecution.

5

In 2018, 2nd Mental Health Calendar was developed – Wednesdays at 11:00 AM

- Serve those with Mental Health diagnosis and needed additional services.
- Pre-COVID, able to:
- Initial in-take assess to determine needs – meet in jail
 - Connect to Jail Transition Services - warm hand-off
 - Pick up when released from jail
 - Transport to initial intake with Catholic Community Services/Greater Lakes
 - Connect to Catholic Community Services
 - Housing/evaluation/bus passes-transport/employ
- Started having staffings
 - Meeting with attorneys/judge/treatment agency staff members.
- Site visits to Olympia and Everett – Mental Health and Community Court
 - Came together as a team

6

During COVID

- Not able to access jail
- No in-person hearings, in-custodies were done by video only
- 11:00 AM docket on Zoom/Phone
- No Staffings
 - Limited connection between team members

7

Currently

- 9:00 AM docket – in-person/transported from jail to courtroom with Jail Transition Services and Catholic Community Services present.
- 11:00 AM docket – starting in-person in July
- Still no access in jail for warm hand-off
- Weekly Staffing started again

8

Future

- Received grant through state for \$246,881. to include the following:
 - Therapeutic Courts Coordinator - \$166,737.
 - Staff Equipment Training – \$9,095.
 - Treatment Services - \$71,049.
 - Therapeutic Court Coordinator should start by mid July
 - Coordinate with stakeholders to develop Therapeutic Mental Health Court and Community Court
 - Mapping to find all resources in jurisdiction
 - Develop best practices for both courts
 - Able to have direct contact with participants to help with follow through
 - Research/write grants for court
- ❖ These funds are available to the court through June 30, 2023.

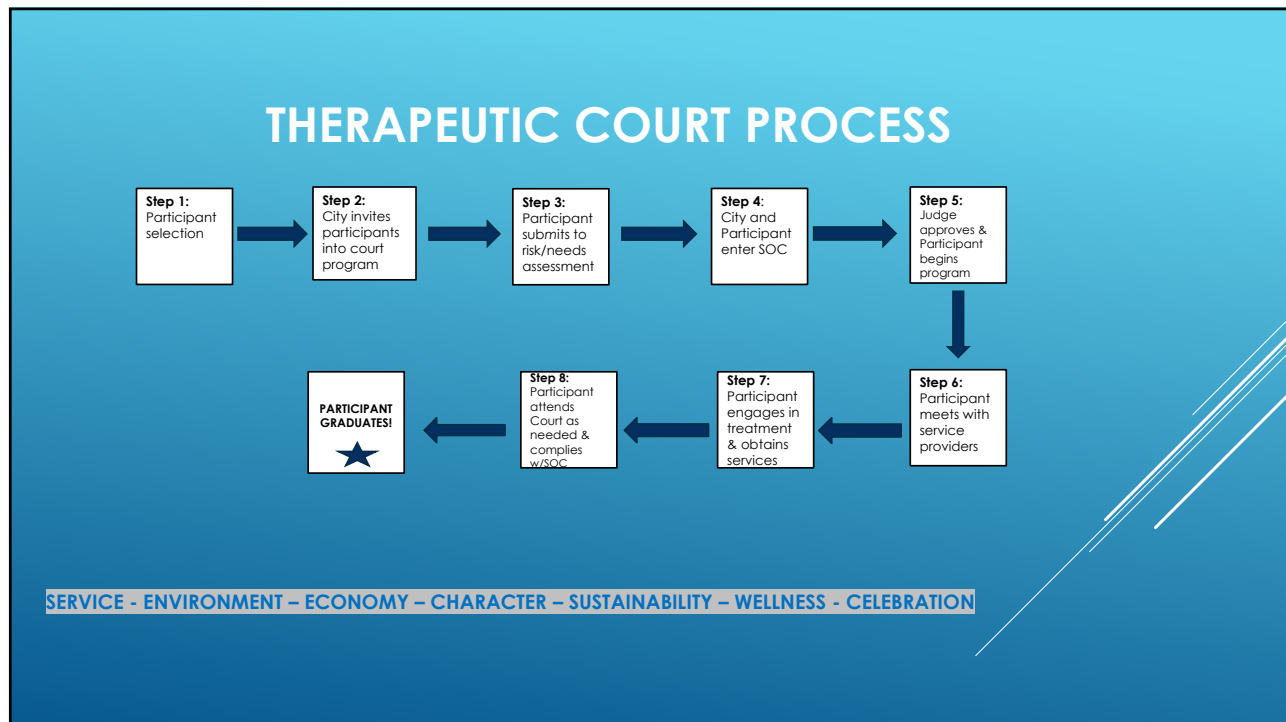
We have applied for an additional grant funding through Administrative Offices Of The Courts that will also be available through June 30, 2023 if granted.

9

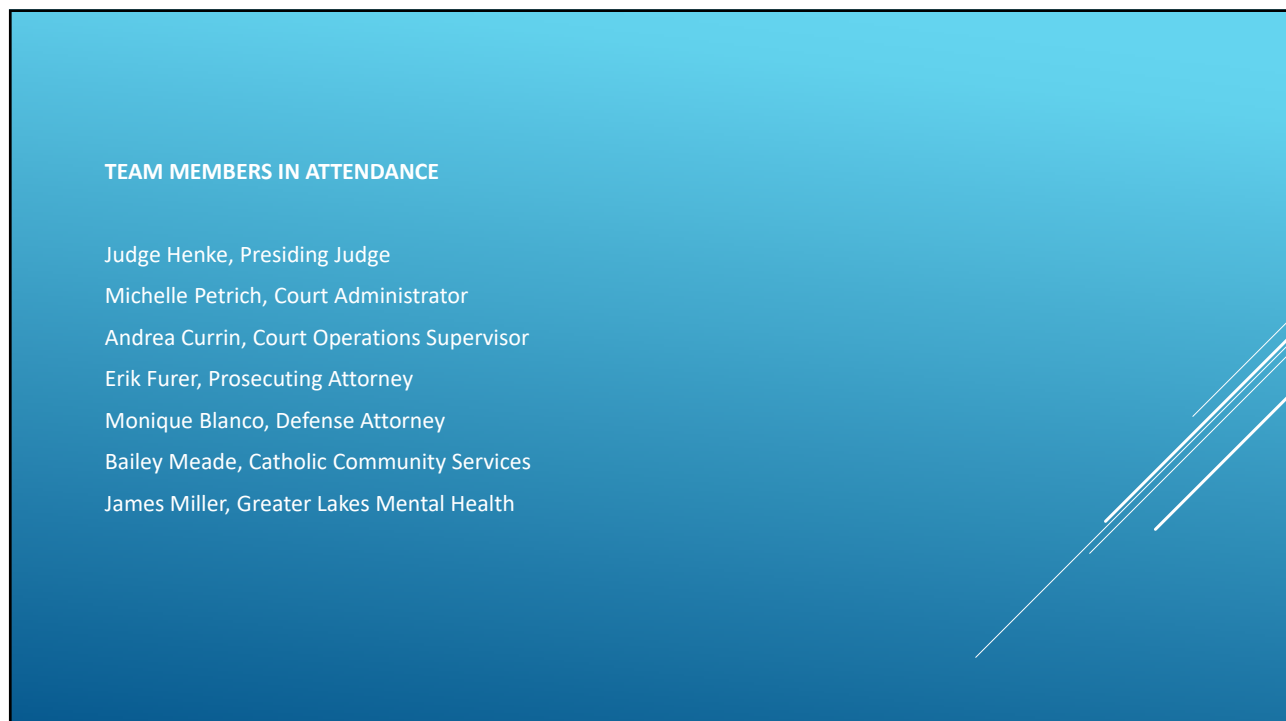
Our court's program will comply with evidence-based practices by employing the following practices:

1. **Target Populations:** We will target at-risk populations—those who are at a substantial risk for reoffending or have struggled to succeed in less-intensive supervision programs. We will assess candidates' eligibility by using validated risk and clinical-assessment tools, not subjective criteria or personal impressions.
2. **Equity and Inclusion:** No individual will be excluded based on race, ethnicity, gender, sexual orientation, sexual identity, physical or mental disability, religion, or socioeconomic status. We will be responsive to the cultural differences within our population.
3. **Roles and Responsibilities of the Judge:** Our Mental Health Court judge and our Community Court judge understand the importance of the role that they play in the success of the programs and are excited to participate in the programs. Each of our judges strive to be informed, approachable, fair, respectful, attentive, open and caring.
4. **Incentives, Sanctions, and Therapeutic Adjustments:** Our courts (Mental Health Court and Community Court) understand that jail is only used as a last resort in order to motivate individuals to change behavior. Jail sanctions will only be used after less stringent responses have been ineffective. Incentives, such as having a participant's case called early in the hearing, or not having to come to court as often will be a standard practice for those who are doing well in the program. Other sanctions, such as having to come to court more often, performing community service, or sitting through an entire docket, will be used before a judge will consider imposing a short jail (or EHM) sanction.
5. **Substance Use Disorder Treatment:** Our courts will work closely with qualified treatment agencies to provide individualized treatment plans to participants to assist them in achieving their treatment plan goals.
6. **Complementary Treatment and Social Services:** Our courts will work with treatment agencies and other organizations within the City, such as Jail Transition Services and Catholic Community Services, to provide participants assistance in receiving trauma-informed services, counseling, vocational, housing and educational services.
7. **Drug and Alcohol Testing:** Our courts plan to implement frequent, random, and comprehensive drug and alcohol testing of participants to gauge treatment progress, compliance to ensure abstinence.
8. **Multidisciplinary Team:** Our courts will have a multidisciplinary team in place to include: judge, program coordinator (therapeutic specialist), prosecutor, defense attorney, jail mental health counselor, and treatment representatives. We would also like to include a member of law enforcement and business representative.
9. **Census, Caseloads, Monitoring and Evaluation:** Our court will continually monitor and evaluate: the size of the program to ensure that caseload sizes remain constant; that the program adheres to best practices; and that the participant outcomes are on target.

10



11



12