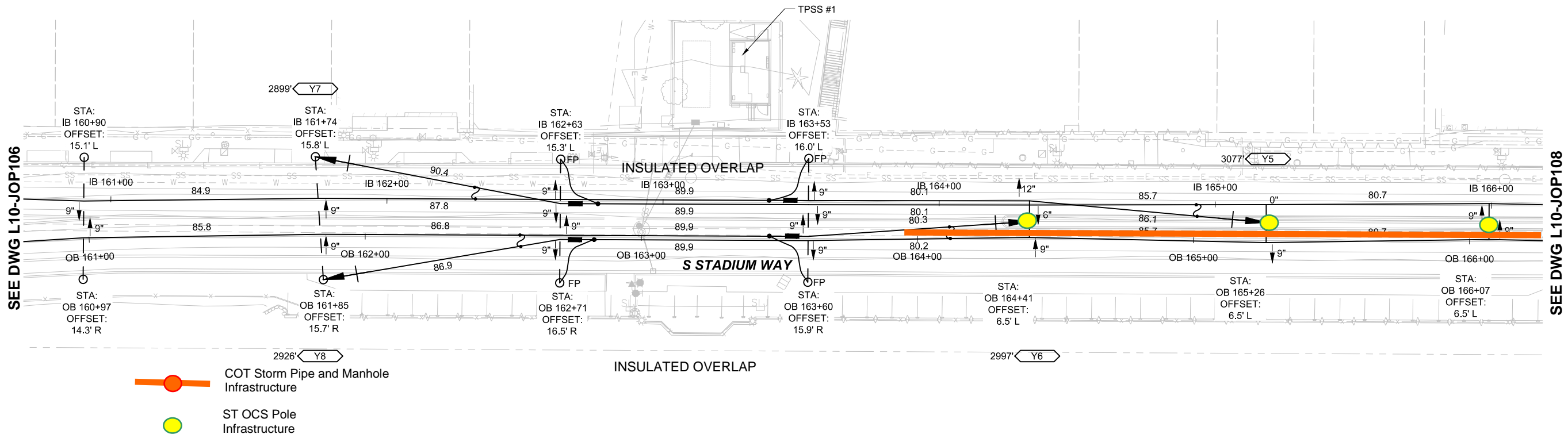


INBOUND TRACK													
STRUCTURE NUMBER	STATION	POLE USE	POLE TYPE	POLE OFFSET	REFERENCE TRACK	WIRE RUN NUMBER	MW/CW HT. (FT.-IN.)	TERMINATION HT. (FT.-IN.)	SUPPORT TYPE	REGISTRATION ASSEMBLY	POLE BRACKET	MISC. ASSEMBLY	REMARKS
T16-012	161+74		PS-526	15.8' L	INBOUND	Y05	19' 6"	21' 3"	SEE BELOW	HR-1L	BT-02 (2)	FT-01, JC-01	WIRE TERMINATION
T16-014	162+63		PF-530	15.3' L	INBOUND	Y05	19' 6"		SEE BELOW	HR-1M	BT-02 (2)	SI-02	FEEDER POLE
T16-016	163+53		PF-530	16.0' L	INBOUND	Y05	20' 3"			HR-1H		SI-02, FC-01, SA-01	FEEDER POLE
						Y07	19' 6"		SEE BELOW	HR-1L	BT-02 (2)	SA-01, FC-01	
T16-017	164+41		SEE BELOW	SEE BELOW	OUTBOUND	Y05	20' 3"			SCA-04HA	BT-01	JC-01	
						Y07	19' 6"						
T16-018	165+26		SEE BELOW	SEE BELOW	OUTBOUND	Y07	19' 6"	21' 0"		SCA-01L	BT-01	FT-01, BT-02	WIRE TERMINATION



OUTBOUND TRACK													
STRUCTURE NUMBER	STATION	POLE USE	POLE TYPE	POLE OFFSET	REFERENCE TRACK	WIRE RUN NUMBER	MW/CW HT. (FT.-IN.)	TERMINATION HT. (FT.-IN.)	SUPPORT TYPE	REGISTRATION ASSEMBLY	POLE BRACKET	MISC. ASSEMBLY	REMARKS
T16-011	161+85		PS-526	15.7' R	OUTBOUND	Y06	19' 6"	21' 3"	CS-02	HR-1L	BT-02 (2)	FT-01, JC-01	WIRE TERMINATION
T16-013	162+71		PF-530	16.5' R	OUTBOUND	Y06	19' 6"		HS-24	HR-1M	BT-02 (2)	SI-02	FEEDER POLE
T16-015	163+60		PF-530	15.9' R	OUTBOUND	Y06	20' 3"			HR-1H		SI-02, FC-01, SA-01	FEEDER POLE
						Y08	19' 6"		HS-24	HR-1M	BT-02 (2)	JC-01, SA-01, FC-01	
T16-017	164+41		PS-526	6.5' L	OUTBOUND	Y08	19' 6"	21' 0"		SCA-01L	BT-01	FT-01, BT-02	WIRE TERMINATION
T16-018	165+26		PS-526	6.5' L	OUTBOUND	Y08	19' 6"			SCA-01L	BT-01		

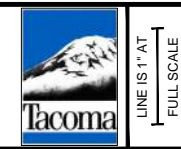


**ISSUED FOR BID**

DESIGNED BY:  
A. DILLON  
DRAWN BY:  
N. DIAZ  
CHECKED BY:  
J. WIESE  
APPROVED BY:  
J. WIESE



SUBMITTED BY: F. NANNENGA  
DATE: 02/16/2018  
REVIEWED BY: B. PATTON  
DATE: 02/16/2018



SCALE: 1"=20'  
FILENAME: T100-L10-JOP107  
CONTRACT No.: RTA/CN 0129-17  
DATE: 02/16/2018

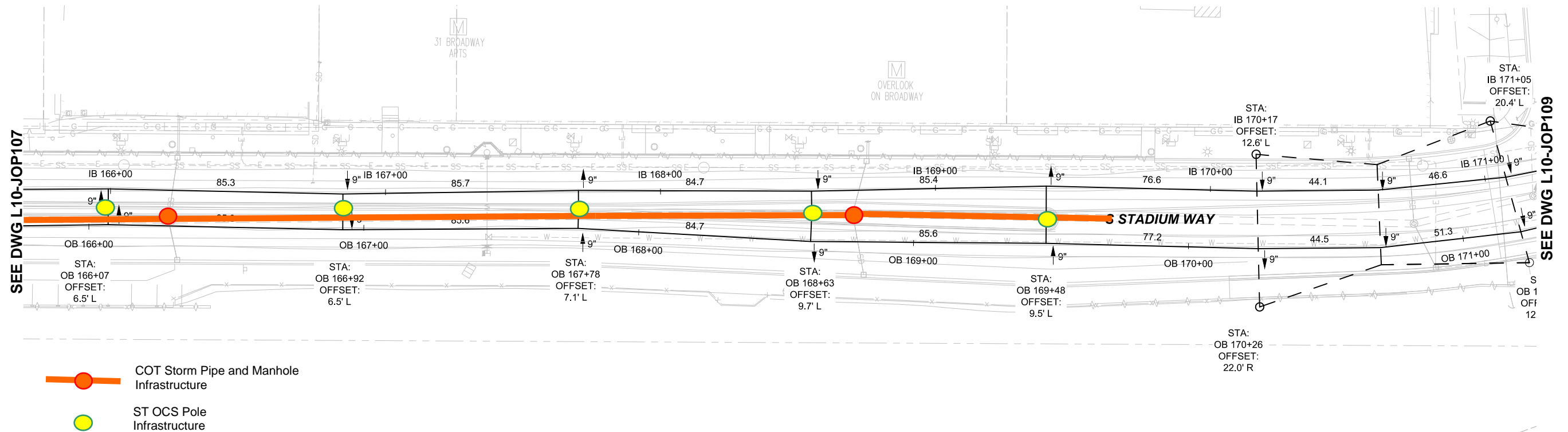
**TACOMA LINK EXTENSION  
CONTRACT T100  
MAINLINE AND O & M FACILITY**  
SYSTEMS ENGINEERING  
OVERHEAD CONTACT SYSTEM  
LAYOUT PLAN OB STA 161+00 TO OB STA 166+00

DRAWING No.: L10-JOP107  
FACILITY ID: T16  
SHEET No.: 827  
REV:

02/06/18 | 9:53 AM | NDAZ  
C:\PWORKING\ESTD\T100-L10-JOP107.DWG

No.	DATE	DSN	CHK	APP	REVISION

INBOUND TRACK													
STRUCTURE NUMBER	STATION	POLE USE	POLE TYPE	POLE OFFSET	REFERENCE TRACK	WIRE RUN NUMBER	MW/CW HT. (FT.-IN.)	TERMINATION HT. (FT.-IN.)	SUPPORT TYPE	REGISTRATION ASSEMBLY	POLE BRACKET	MISC. ASSEMBLY	REMARKS
T16-019	166+07		SEE BELOW	SEE BELOW	OUTBOUND	Y07	19' 6"			SCA-01L	BT-01		
T16-020	166+92		SEE BELOW	SEE BELOW	OUTBOUND	Y07	19' 6"			SCA-01L	BT-01		
T16-021	167+78		SEE BELOW	SEE BELOW	OUTBOUND	Y07	19' 6"			SCA-01L	BT-01		
T16-022	168+63		SEE BELOW	SEE BELOW	OUTBOUND	Y07	19' 6"			SCA-01L	BT-01		
T16-023	169+48		SEE BELOW	SEE BELOW	OUTBOUND	Y07	19' 6"			SCA-02M	BT-01		
T16-025	170+17		PS-430	12.6' L	INBOUND	Y07	19' 6"		SEE BELOW	HR-1L	BT-02 (2)	BB-01, HR-10	



OUTBOUND TRACK													
STRUCTURE NUMBER	STATION	POLE USE	POLE TYPE	POLE OFFSET	REFERENCE TRACK	WIRE RUN NUMBER	MW/CW HT. (FT.-IN.)	TERMINATION HT. (FT.-IN.)	SUPPORT TYPE	REGISTRATION ASSEMBLY	POLE BRACKET	MISC. ASSEMBLY	REMARKS
T16-019	166+07		PS-126	6.5' L	OUTBOUND	Y08	19' 6"			SCA-01L	BT-01		
T16-020	166+92		PS-126	6.5' L	OUTBOUND	Y08	19' 6"			SCA-01L	BT-01		
T16-021	167+78		PS-126	7.1' L	OUTBOUND	Y08	19' 6"			SCA-01M	BT-01		
T16-022	168+63		PS-126	9.7' L	OUTBOUND	Y08	19' 6"			SCA-02M	BT-01		
T16-023	169+48		PS-126	9.5' L	OUTBOUND	Y08	19' 6"			SCA-01L	BT-01		
T16-024	170+26		PS-530	22.0' R	OUTBOUND	Y08	19' 6"		CS-02 (2)	HR-1L	BT-02 (2)	BB-01, HR-10	



ISSUED FOR BID

DESIGNED BY:  
A. DILLON  
DRAWN BY:  
N. DIAZ  
CHECKED BY:  
J. WIESE  
APPROVED BY:  
J. WIESE



SCALE:  
1"=20'  
FILENAME:  
T100-L10-JOP108  
CONTRACT No.:  
RTA/CN 0129-17  
DATE:  
02/16/2018

**TACOMA LINK EXTENSION  
CONTRACT T100**  
MAINLINE AND O & M FACILITY  
SYSTEMS ENGINEERING  
OVERHEAD CONTACT SYSTEM  
LAYOUT PLAN OB STA 166+00 TO OB STA 171+00

DRAWING No.:  
**L10-JOP108**  
FACILITY ID:  
T16  
SHEET No.:  
828  
REV:

02/06/18 | 10:02 AM | N. DIAZ | C:\PWORKING\ESTD\T100-L10-JOP108.DWG

No.	DATE	DSN	CHK	APP	REVISION

SUBMITTED BY:  
F. NANNENGA  
DATE:  
02/16/2018

REVIEWED BY:  
B. PATTON  
DATE:  
02/16/2018