

City of Tacoma
**Comprehensive Emergency
Management Plan Update**

**Tacoma City Council
December 17, 2013**

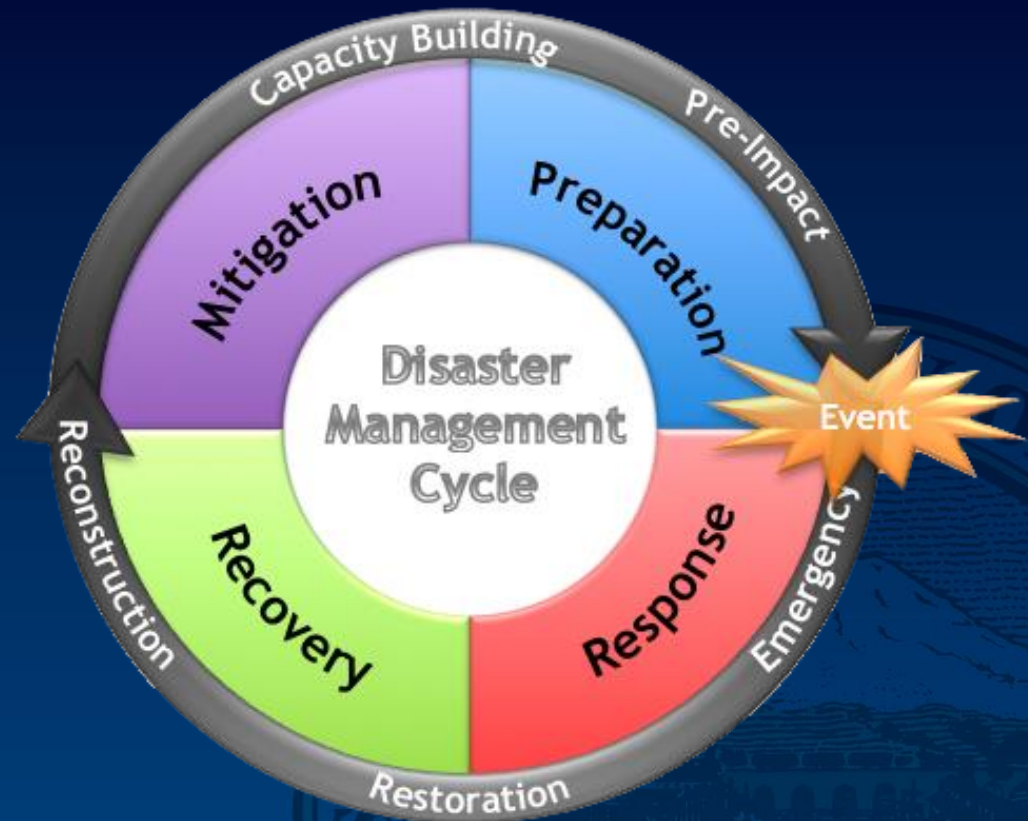


Purpose of the CEMP

- **Required function of government**
 - Federal requirement of all states
 - State requirement of all counties and some large cities
- **CEMP must be aligned with National Incident Management System (NIMS) and National Response Framework (NRF)**
- **Ensures coordination at all levels**

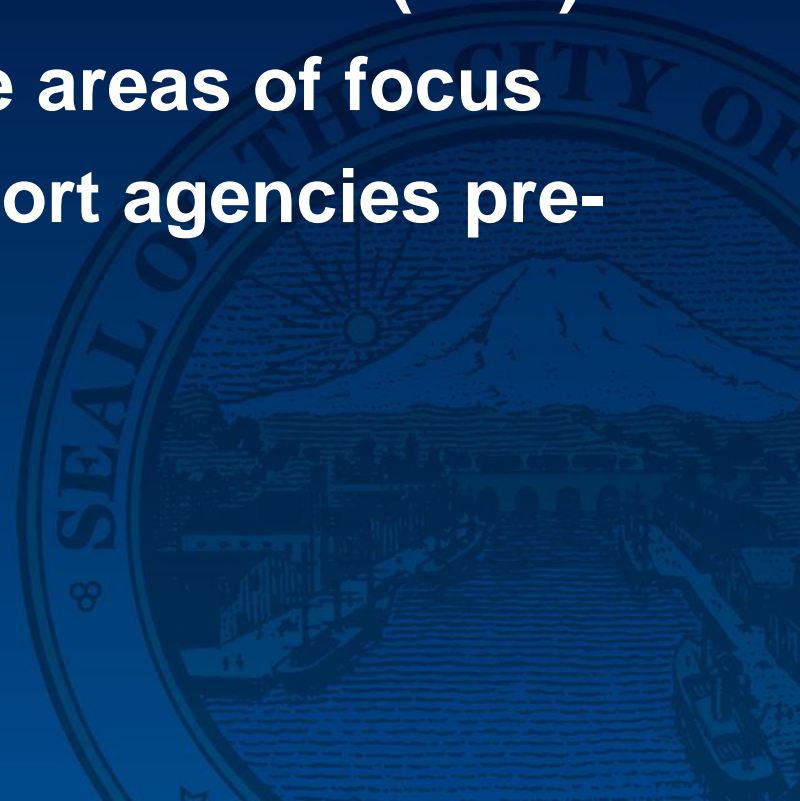
Elements of all CEMPs

- Mitigation
- Prevention
- Preparedness
- Response
- Recovery



City of Tacoma CEMP

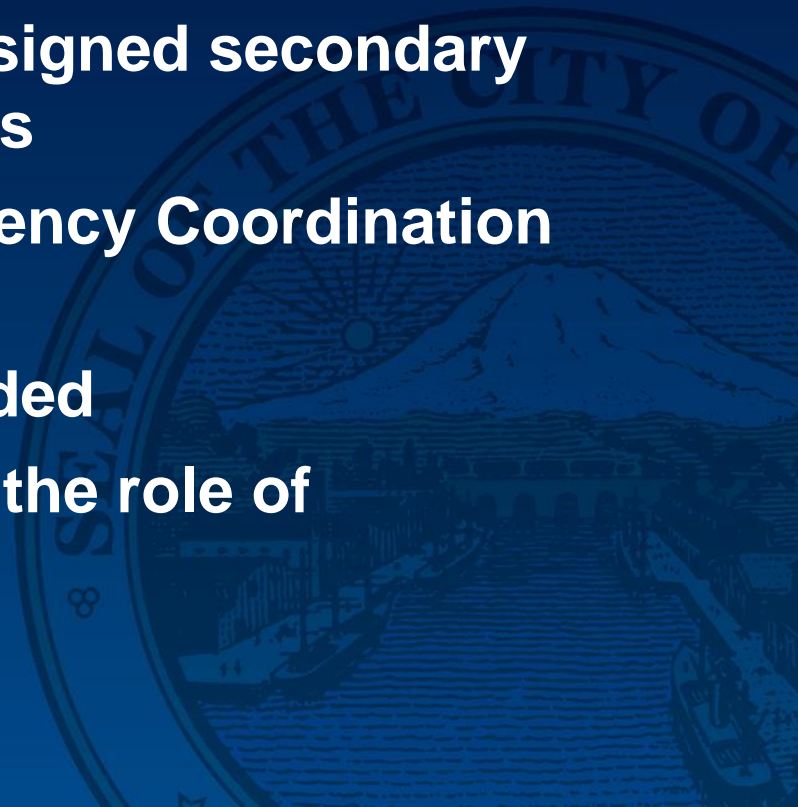
- **Primary Sections**
 - **Basic Plan**
 - **Emergency Support Functions (ESF)**
 - **15 comprehensive areas of focus**
 - **Primary and Support agencies pre-assigned**



CEMP Updates

- **Key Changes**

- **Five year plan**
 - **“living document”**
- **ESFs updated and reassigned secondary to departmental changes**
- **EOC changed to Emergency Coordination Center (ECC)**
- **ADA considerations added**
- **Increased emphasis on the role of businesses**



Outreach

- **Representation and/or review from all City Departments and various external support agencies**



City of Tacoma
**Comprehensive Emergency
Management Plan Update**

**Tacoma City Council
December 17, 2013**

