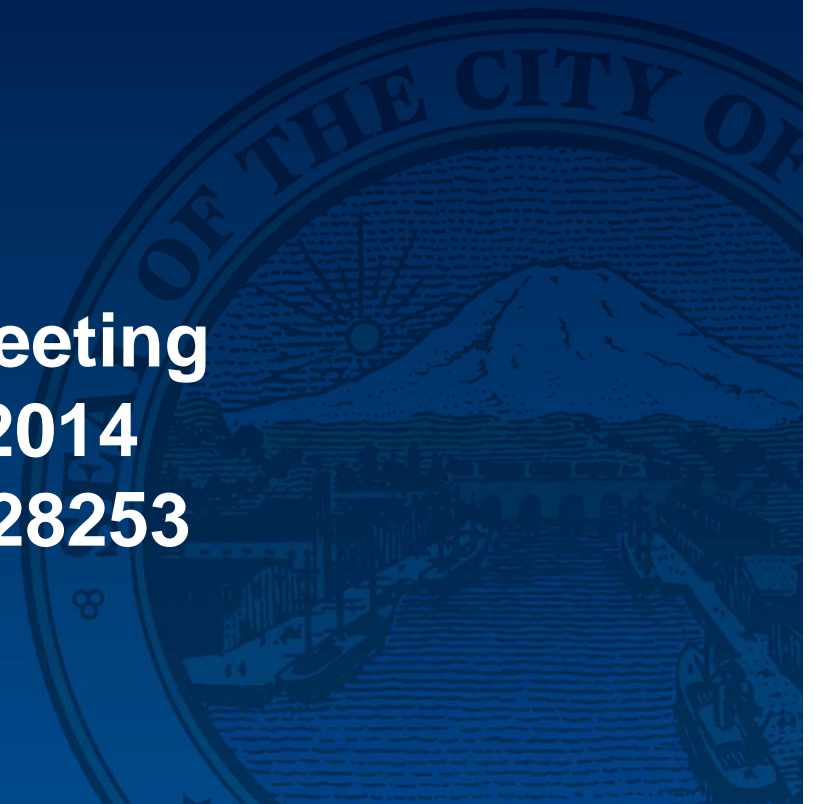


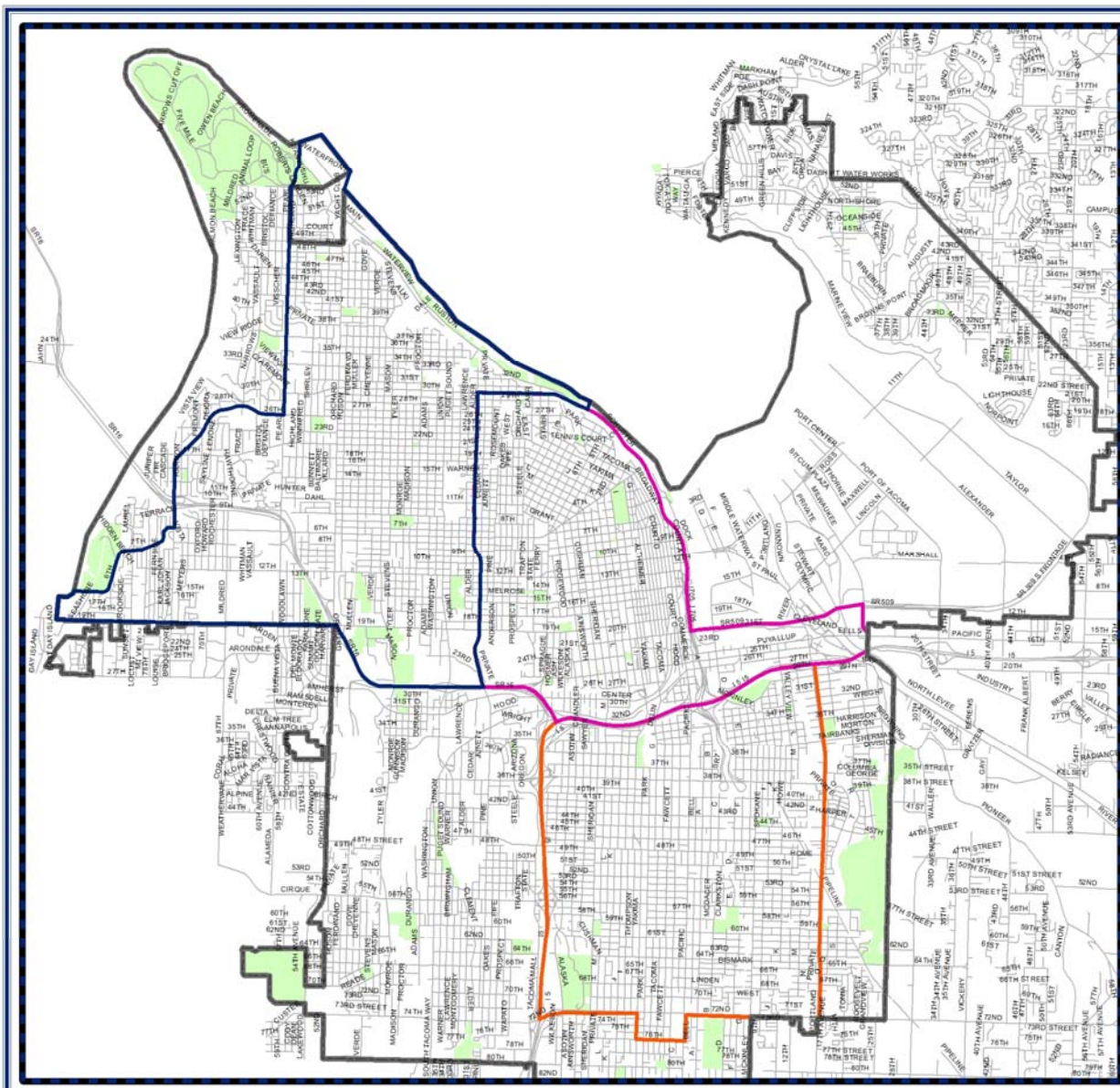
# **West End Alcohol Impact Area**

City of Tacoma

Tacoma Police Department

**City Council Meeting  
October 28, 2014  
Ordinance #28253**





## Alcohol Impact Study

### Legend

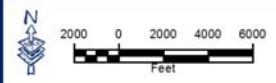
- Revised West End AIA
- Downtown AIA
- Lincoln AIA
- City Boundary
- Streets
- Park Land

Compliance Period ran from 22 Aug 2013 to 24 Feb 2014.

Selected Call Types:  
 (1) Drunk in Public; (2) Liquor in Park;  
 (3) Liquor Law Violation; (4) Minor in Possession; and (5) Urinate in Public

There were 60 selected CFS in the compliant West End AIA.

Map Uses: Cell Size of 100; 1,056 Sq Ft Radius, Kernel Density, 5 Classifications of Equal Intervals.



**Tacoma  
 Police Department  
 Crime Analysis Unit**

*This drawing is neither a legally recorded map nor a survey and is not intended to be used as one. It is to be used for reference purposes only.*

# **West End Alcohol Impact Area**

City of Tacoma

Tacoma Police Department

**City Council Meeting  
October 28, 2014  
Ordinance #28253**

