

Council Staffing for Washington Cities > 100,000 population

	Population	# of Council Members	Charter*	Form of Government	Council Staff FTE's	
Seattle**	779,200	9	Y	Mayor - Council	59	19-member central policy support staff, 13 communications staff, and each councilmember has 3 staff members
Spokane**	232,700	7	Y	Mayor - Council	14	7 member central staff, and each councilmember has 1 legislative assistant
Tacoma**	222,400	9	Y	Council - Manager	7	Three 2-person support teams composed of administrative and analyst/policy support (6 FTE), and 1 Constituent services position
Vancouver**	199,600	7	Y	Council - Manager	0	N/A*
Bellevue	154,600	7	N	Council - Manager	0	N/A*
Kent	139,400	7	N	Mayor - Council	0.5	Admin Assistant that assists the Council
Everett**	114,200	7	Y	Mayor - Council	1	Executive Assistant to the City Council
Renton	107,900	7	N	Mayor - Council	1	Council Liaison that serves all Councilmembers
Spokane Valley	107,400	7	N	Council - Manager	0	N/A*
Federal Way	102,000	7	N	Mayor - Council	1	Executive Assistant to the City Council

Notes: Mayor-Council Cities in blue.

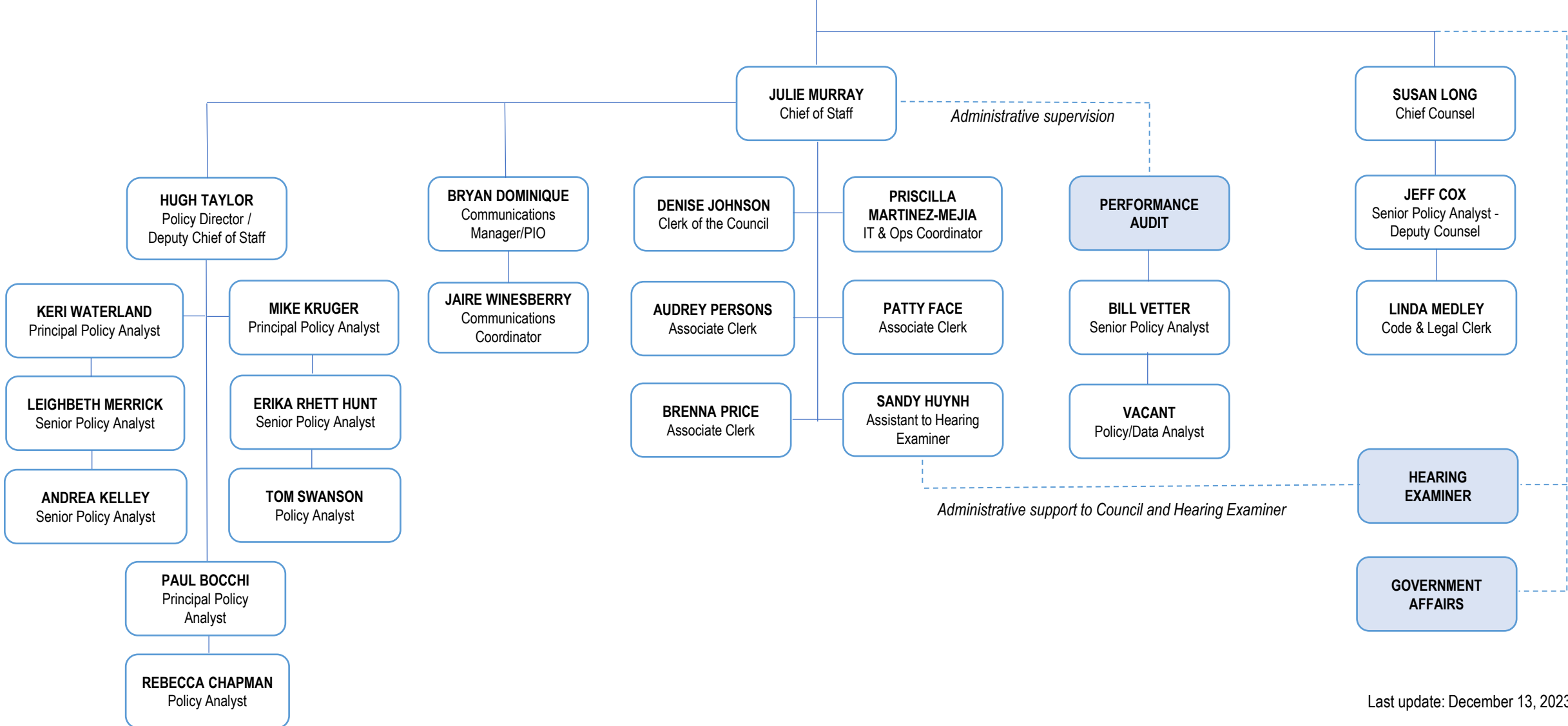
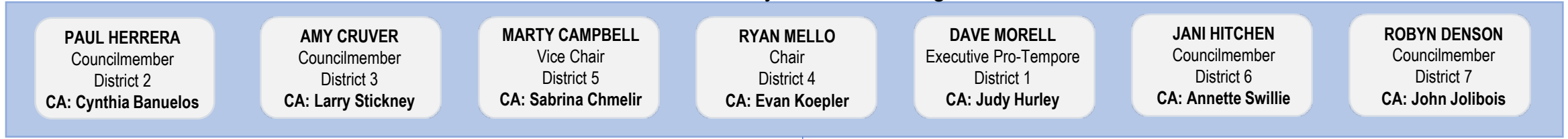
** First Class Cities (Charter Cities). For cities that do not have a City Charter, state law establishes that either the Mayor (in Mayor-Council cities) or the City Manager (in Council-Manager cities) is responsible for directing the work of all staff. In limited instances (Kent, Renton and Federal Way) the Mayor has delegated a staff person to work directly with the Council.

* For those cities that have no designated City Council staff, typically one or more staff members are designated to provide administrative support to the Council.

Council Staffing for Pierce County

	Population	# of Council Members	Form of Government	Council Staff FTE's	
Pierce County	921,130	7	Home Rule County	27	9-member policy support staff team, 11 administrative staff (includes communications and legal counsel), and 1 Council Assistant per member (7 FTE). <i>(Separate from the total shown, the office includes 1 position independently supporting the County's Hearing Examiner and 2 independent performance audit positions largely assigned to provisions outlined in County Charter.)</i>

Office of the Pierce County Council – Organizational Chart



City of Spokane

Mayor's Office Staff – 6 positions

- Chief of Staff, Administration
- Manager of Operations, Operations
- Director of Emergency Management, Emergency Management
- Policy Advisor, Mayor's Office
- Constituent Services Coordinator, Constituent Services
- Executive Assistant to the Mayor, Administrative Support

Council Staff, 14 positions

Central Staff

- Director, City Council Office
- Director of Communications and Community Engagement
- Manager of Equity and Inclusion
- Manager of Housing and Homelessness Initiatives
- Manager of Intergovernmental Affairs
- Council Policy Advisor
- Manager of Neighborhood Connectivity Initiatives

Individual Council Staff

- Each of the 7 Councilmembers has one legislative assistant