

Land Use Compatibility

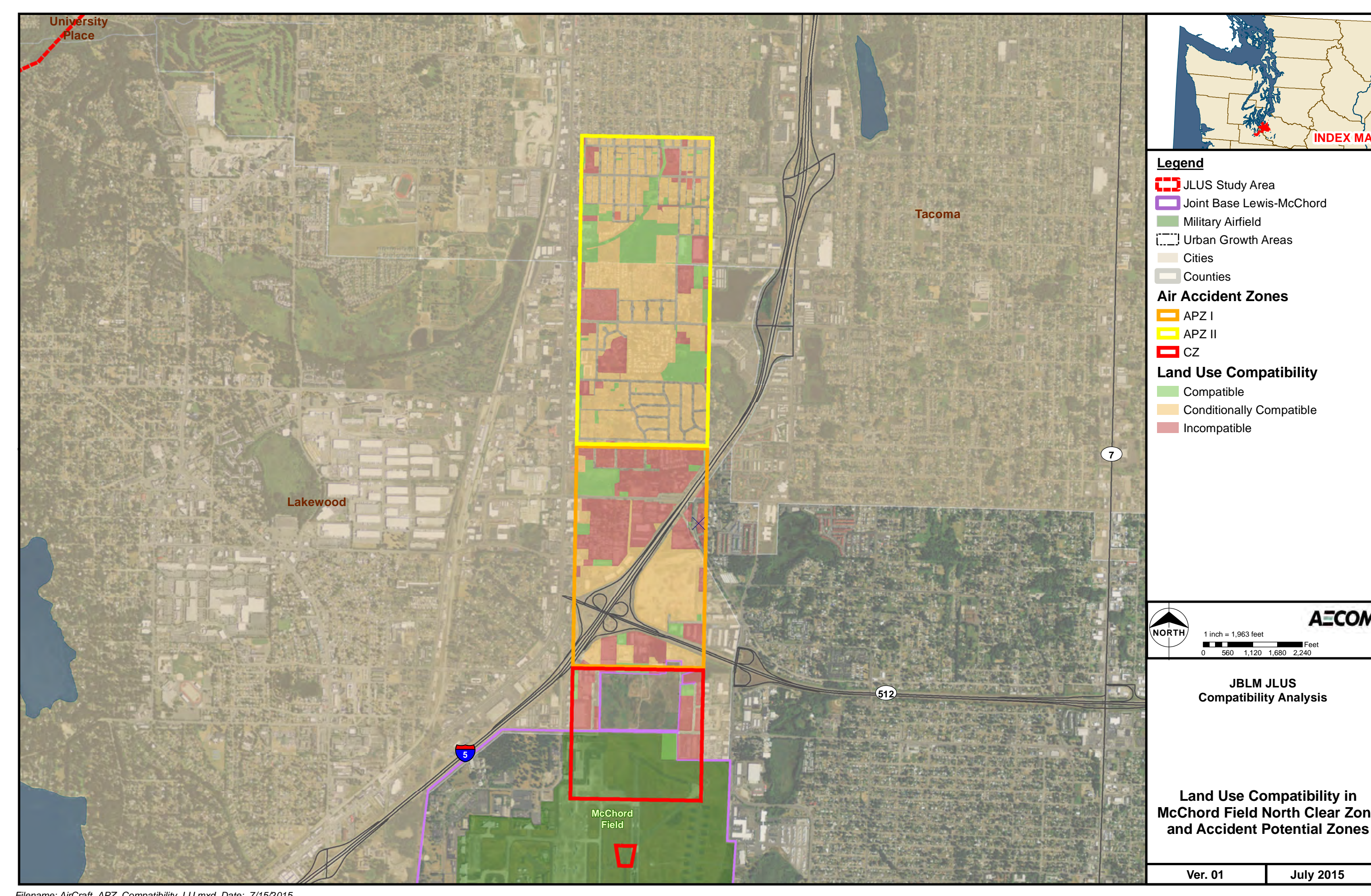
Most current land uses around JBLM do not have negative impacts on military capabilities; however, some ongoing and potential new or future areas of concern were identified through the current JLUS process:

- **Urban Growth**
- **Aircraft Safety**
- **Noise**
- **Endangered and Threatened Species and Habitat**
- **Transportation**
- **Trespass and Unauthorized Access to JBLM Range and Training Lands**
- **Communication and Coordination**

The maps below and to the right are used to identify where potential incompatibilities may exist and where compatibility strategies are needed.

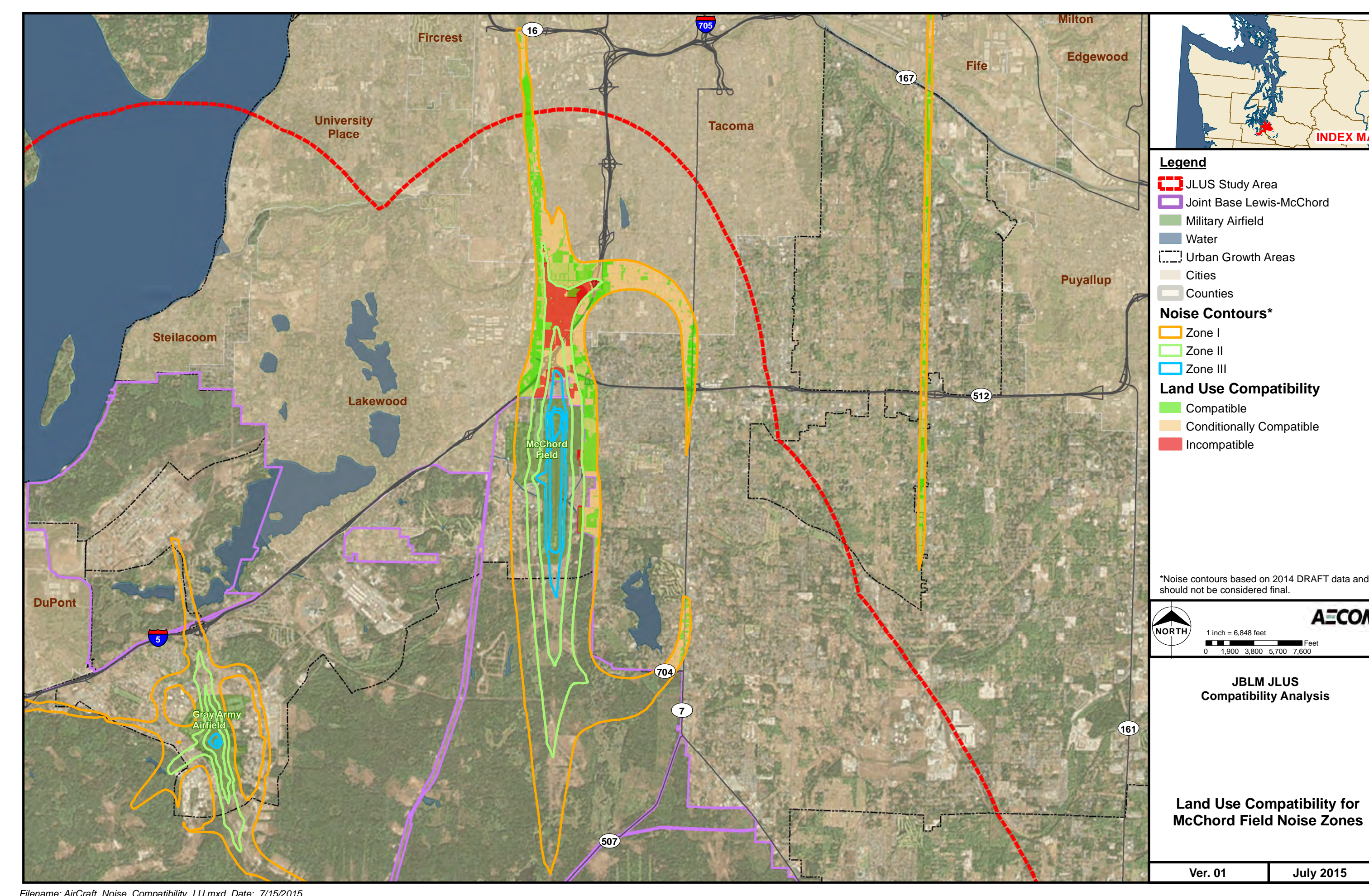
Aircraft Safety

The map to the right shows aircraft safety zones related to McChord Field. The three zones are based on the statistical chance of aircraft accidents. Land uses that concentrate people, such as schools or hospitals, higher density commercial, or residential uses other than very low density residential are at higher risk within these zones. Red, yellow, and green correspond to the level of compatibility of current land uses.



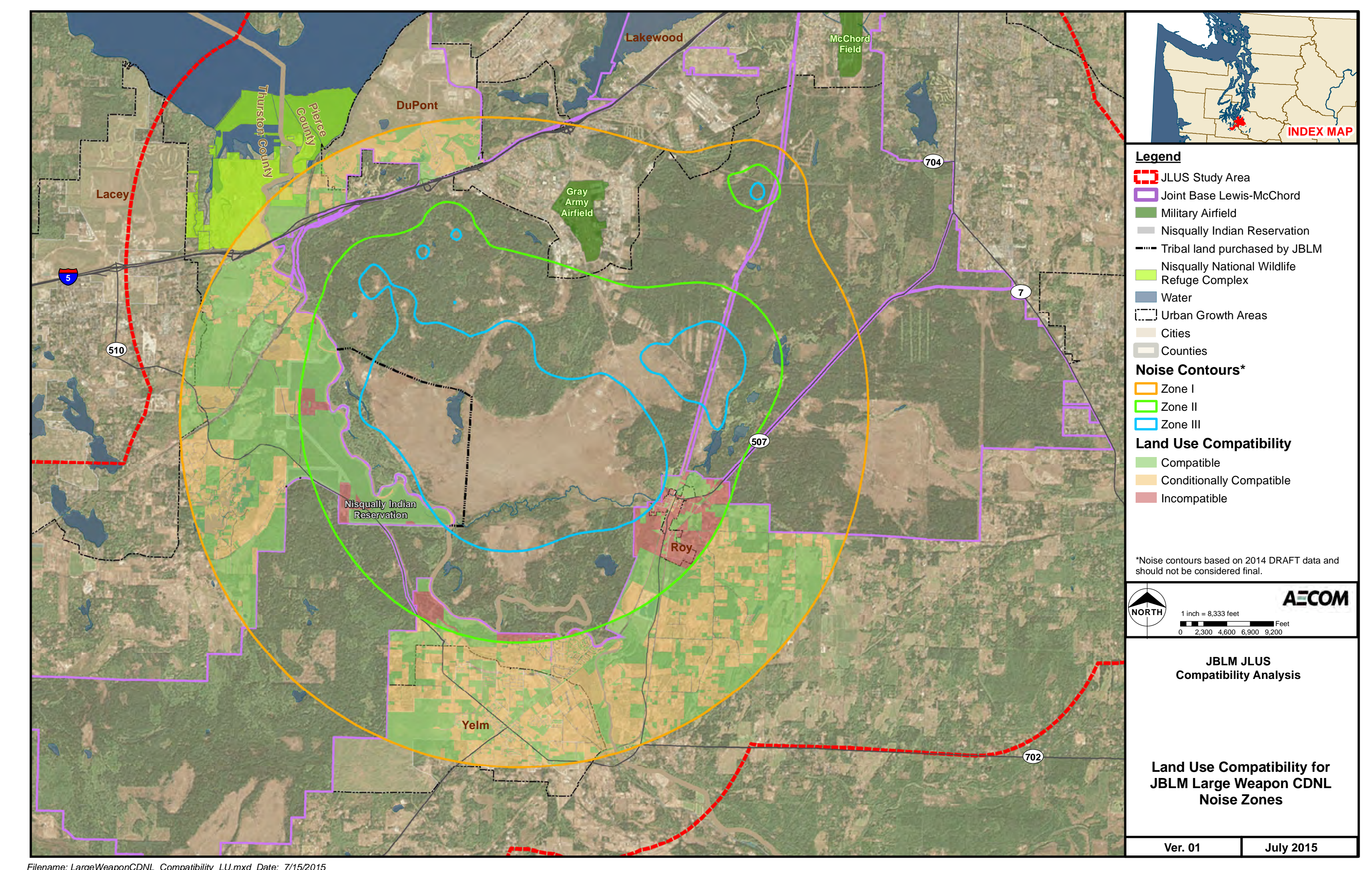
Aircraft Noise

The map to the right shows noise generated from aircraft. Generally, residential uses and public uses like schools are more sensitive to noise than commercial or industrial uses. Red, yellow, and green correspond to the level of compatibility of current land uses.



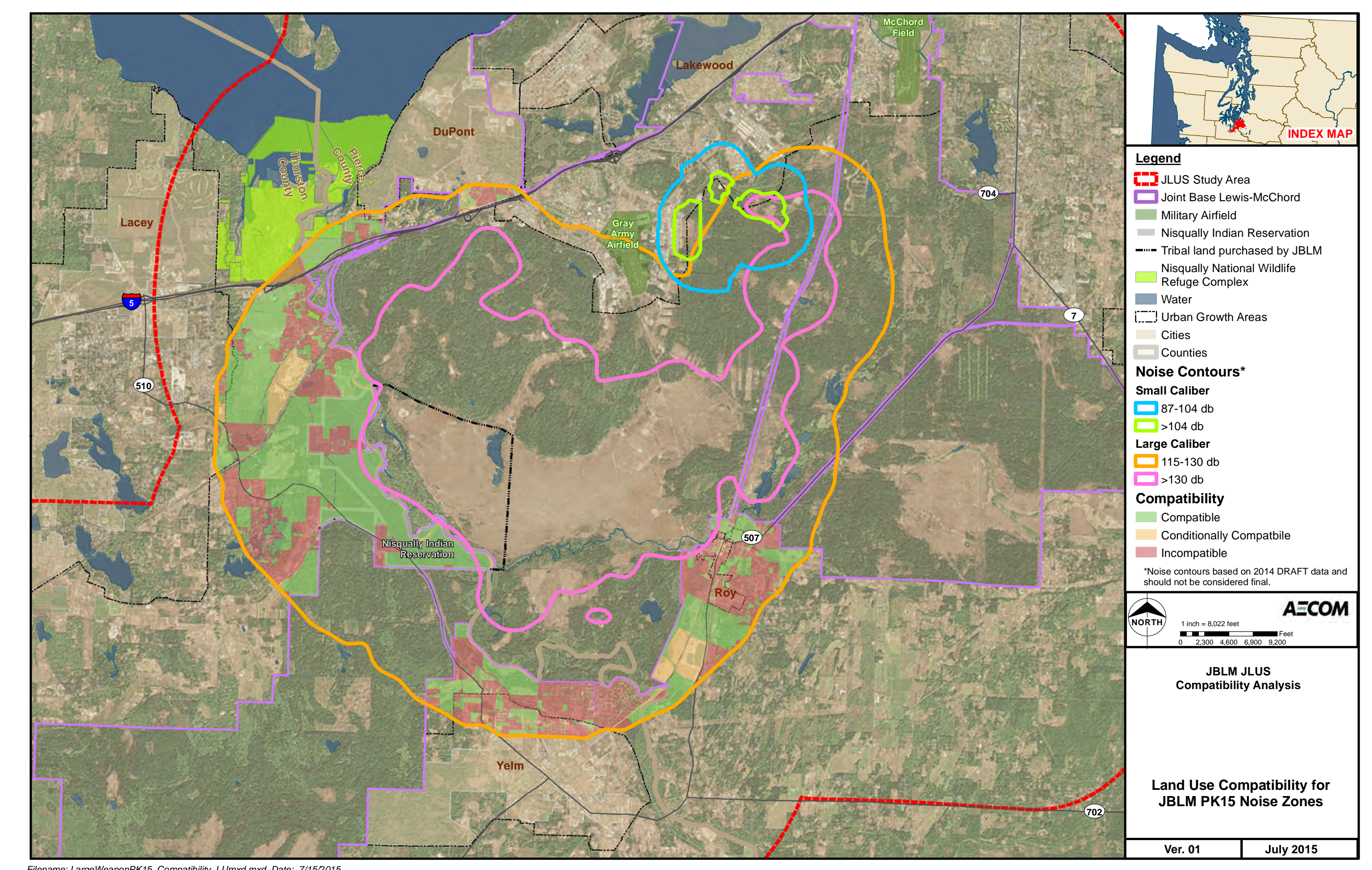
Large Weapons Noise: Day/Night Average

The map to the right shows noise generated from the firing of large weapons on JBLM training lands, with noise levels averaged over a 24-hour period. Generally, residential uses and public uses like schools are more sensitive to noise than commercial or industrial uses. Red, yellow, and green correspond to the level of compatibility of current land uses.



Large Weapons Noise: Peak Levels

The map to the right shows noise generated from the firing of large weapons on JBLM training lands. The mapped noise levels relate to single firing events (noise caused by a single boom). Generally, residential uses and public uses like schools are more sensitive to noise than commercial or industrial uses. Red, yellow, and green correspond to the level of compatibility of current land uses.



Threatened and Endangered Species Habitat

The Mazama Pocket Gopher, Streaked Horned Lark, and Taylor's Checkerspot Butterfly are threatened or endangered species with habitat on JBLM and in surrounding areas. The Army Compatible Use Buffer (ACUB) program has been used to conserve and restore these habitats with the goals of promoting species recovery and to lessen restrictions on JBLM training.

