



Tacoma Equity Index

City of Tacoma | Office of Strategy

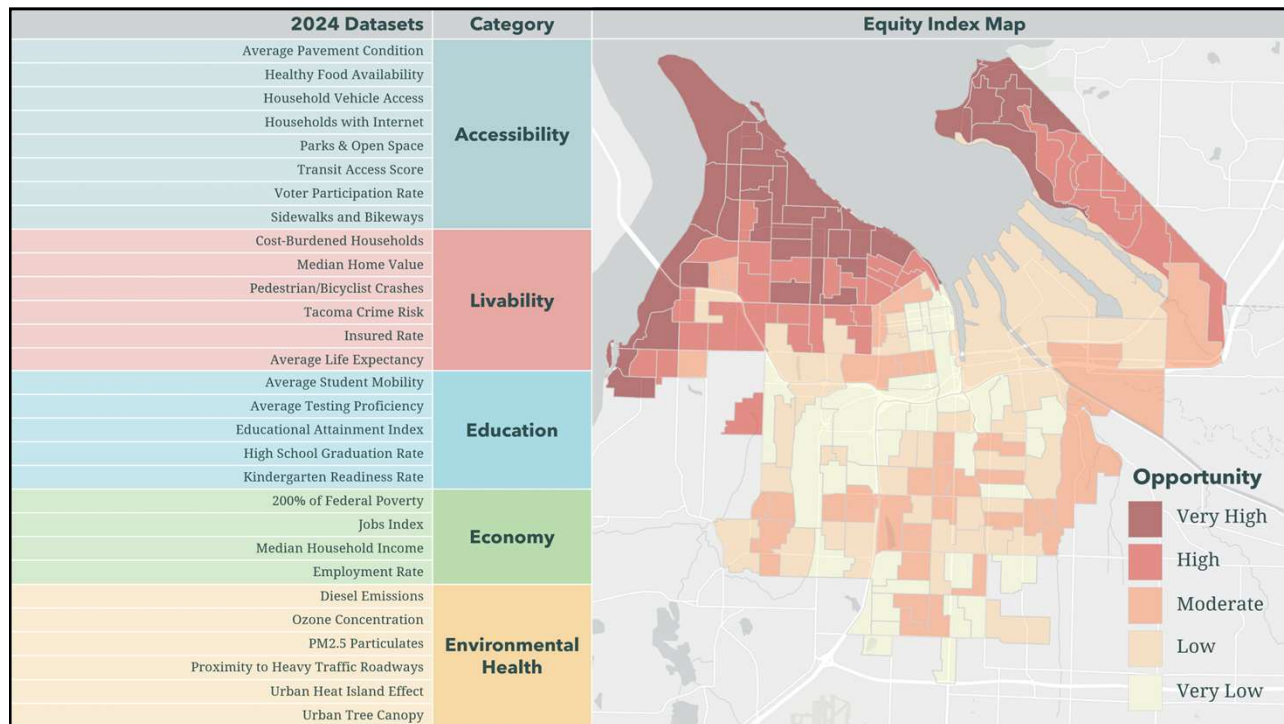
Study Session
July 23, 2024



OVERVIEW



- Background
- Updates and Improvements
- Collection of Case Studies and Story
Map
- Next Steps



PURPOSE



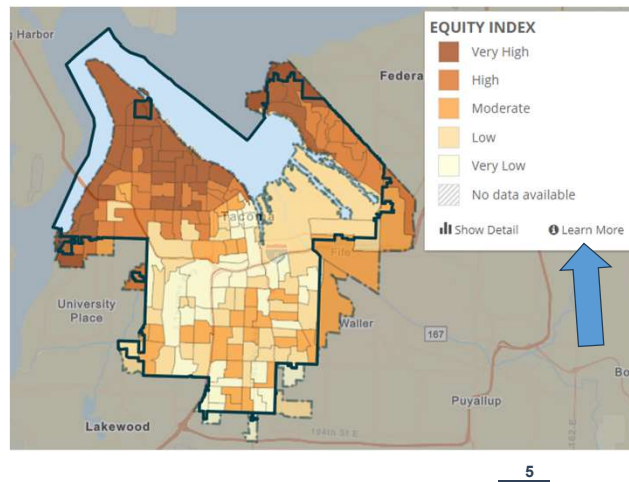
We continually strive to make Tacoma an inclusive and equitable place to live, learn, work and play. The Equity Index is one tool we use as we work to become an equitable and anti-racist City, per Resolution 40622.

The Equity Index helps:

- Identify, Track, and Close Disparities
- Support Data-Driven Decision-Making
- Increase Transparency and Accountability
- Take Actionable Steps to Operationalize Equity

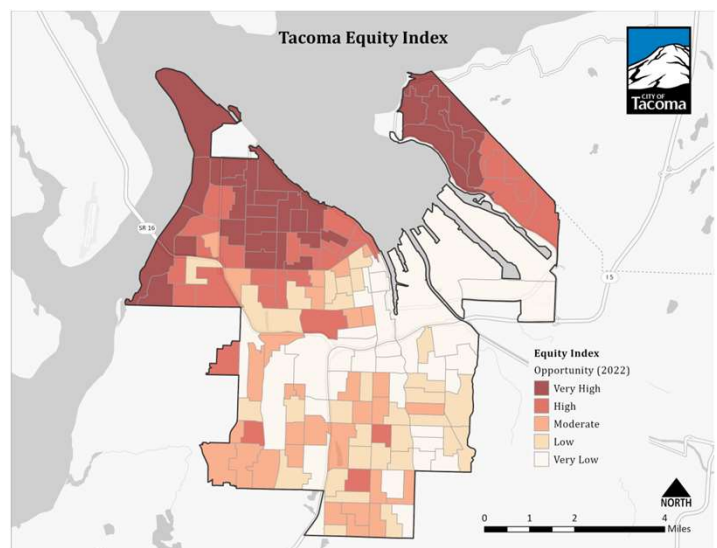
UPDATE AND IMPROVEMENTS

- Updated data from 2022 – 2023 on external Equity Index, Staff Dart Map, and TPU Web Apps
- User Interface Improvements
- Speed improvements
- Expanded to include block groups that are in Tacoma but span across the city boundary line



COLLECTION OF CASE STUDIES

- Resource for internal and external audiences to support education, belief and trust, highlight City of Tacoma's work
- 7 sections
 - Introduction
 - Overlaying Data for an Early Analysis
 - Resource Prioritization
 - Outreach and Engagement
 - Policy Development
 - Partner Spotlight
 - Continuous uses



INTERACTIVE STORY MAP



1 Introducing the Equity Index Case Studies



2 Overlaying Data for An Early Analysis



3 Resource Prioritization



4 Outreach and Engagement

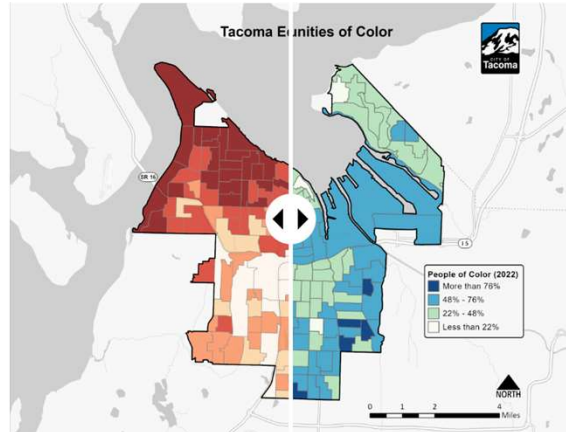
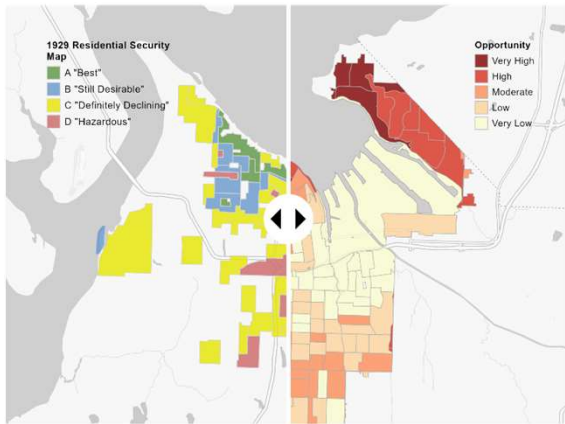


5 Policy Development



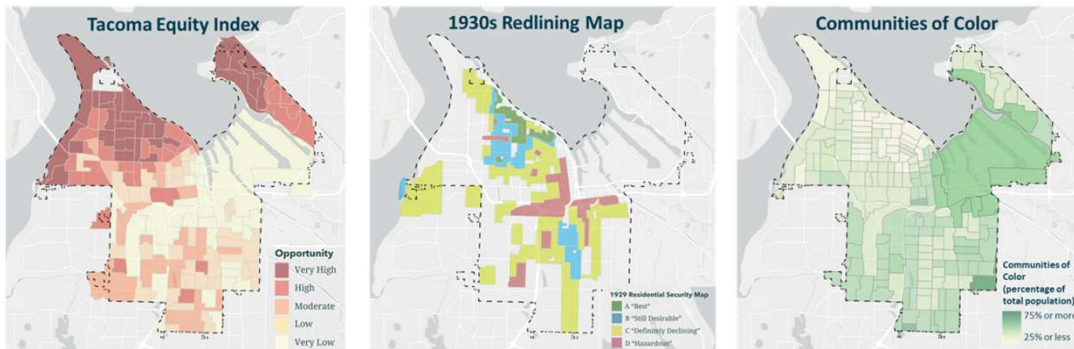
6 Partner Spotlight

INTERACTIVE STORY MAP



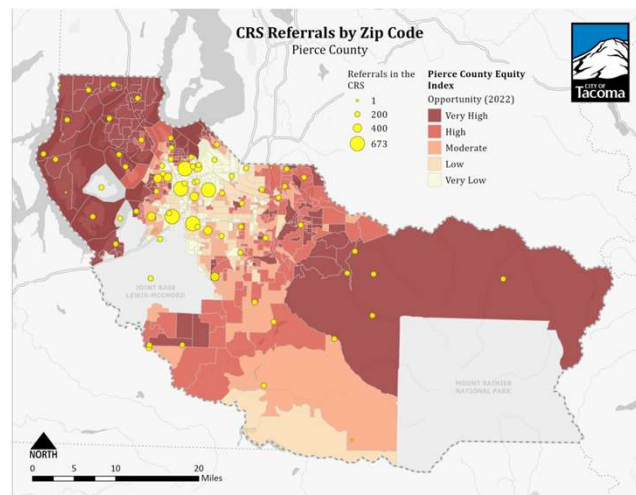
INTRODUCTION

- Preface & Foreword from Mayor
- History and Lasting Impacts of Redlining in Tacoma
- Key Terms for Understanding
- Anti-Racist Transformation
- Building the Equity Index
- Operationalizing the Equity Index
- Additional resources to learn more



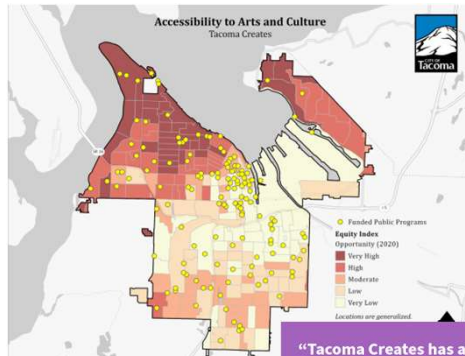
OVERLAYING DATA FOR AN EARLY ANALYSIS

- Owner Occupied Housing Repair Program
- Workforce Central Common Referral System
- Understanding Gaps in Digital Equity



RESOURCE PRIORITIZATION

- Equitably Prioritizing Streetlights
- Equitable Investments in Our Small Business Sector
- Equitable Infrastructure Investments : Advanced Metering
- Expanding Access to Arts and Culture for Youth, Families, and Community
- Selecting Locations for Public Art on Traffic Utility Boxes



"Tacoma Creates has allowed us to begin funding ASL interpreters for our performances. This has allowed for some of our families to access programming that would otherwise be unavailable to them. For the first time this summer, the parents of one of our students was able to enjoy their performance with an interpreter present"

- Tacoma Little Theatre

SELECTING LOCATIONS FOR PUBLIC ART



"I live in South Tacoma, and while driving through my neighborhood, I saw Rodney King's art by Fernhill Elementary. As a former Fernhill Elementary student and a member of the selection panel for the traffic wrap boxes, it was a joyful sight to see. I love walks through the community and am excited to see more traffic box art in the process!" - Kenya Shakoor, Chair, Tacoma Arts Commission



"This one means a lot to me. My great grandma was the most beautiful woman I had ever met. The strongest. The best. I'm thankful for the life she lived, and the beauty and grace she passed down. This work is from me, and from my family," - Nofa Porter

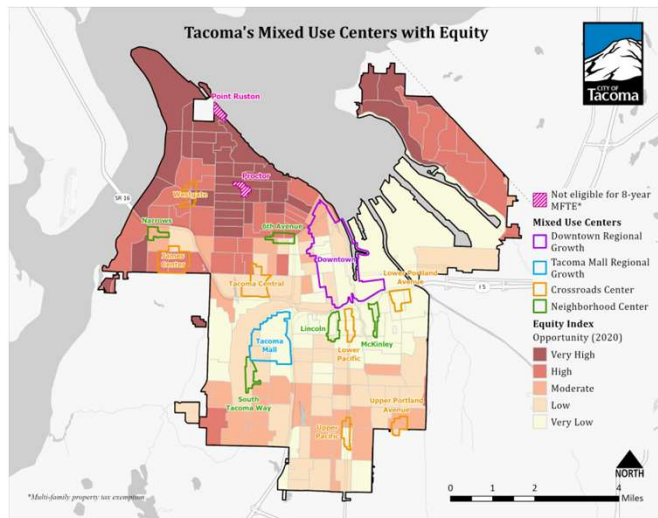
OUTREACH AND ENGAGEMENT

- Increasing Access to Life Saving CPR
- Reducing Recycling Contamination
- Prioritizing Neighborhood Planning & Investments
- Strategic Marketing for Fair Housing Outreach



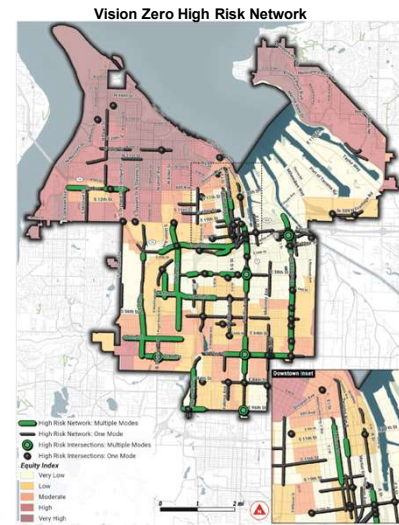
POLICY DEVELOPMENT AND PARTNER SPOTLIGHT

- Policy Development**
- Council Action Memorandums
 - Addressing Affordable Housing through Equity-Informed Policy
- Partner Spotlight**
- Economic Security for All (WorkForce Central)



CONTINUOUS USES

- Criteria in Facilities Scoring
- Eligibility for Assistance
- Historic Preservation
- Specialized Review Permits
- Language Access
- Applying for Grants (City & Metro Parks)
 - Strengthening Mobility and Revolutionizing Transportation Grant
 - People's Community Center Replacement Feasibility Study
 - Southeast Tacoma Community Center Feasibility Study



NEXT STEPS

- Collection of Case Studies and Story Map available now
- Staff Workshops
- Workshop for Members of City's Committees, Boards, and Commissions
- External Presentations (Capacity-permitting)

Tacoma Equity Index Map

Pierce County Equity Index Map

Ask a question or share feedback, ideas, stories



Tacoma Equity Index

City of Tacoma | Office of Strategy

Study Session
July 23, 2024

