
OCTOBER

TACOMA RAIL

2014

**FINANCIAL
REPORT**



Public Utility Board

WOODROW JONES
Chair

BRYAN FLINT
Vice-Chair

MARK PATTERSON
Secretary

DAVID NELSON
Member

MONIQUE TRUDNOWSKI
Member

WILLIAM A. GAINES
Director of Utilities/CEO

DALE KING
Rail Superintendent

ANDREW CHERULLO
Finance Director

DEPARTMENT OF PUBLIC UTILITIES
CITY OF TACOMA

CITY OF TACOMA, WASHINGTON
DEPARTMENT OF PUBLIC UTILITIES, BELT LINE DIVISION
Doing Business As

TACOMA RAIL

TABLE OF CONTENTS

Note: These financial statements are interim, unaudited reports prepared primarily for the use of management. Not all transactions reported in these statements have been recorded on the full accrual basis of accounting or in accordance with generally accepted accounting principles.

STATEMENTS OF NET POSITION	2 - 3
STATEMENTS OF REVENUES, EXPENSES AND CHANGES IN NET POSITION	4 - 5
SUMMARY OF SWITCHING REVENUES AND SWITCHING ACTIVITIES	6 - 7
SUPPLEMENTAL DATA	9 - 13

CITY OF TACOMA, WASHINGTON
DEPARTMENT OF PUBLIC UTILITIES
TACOMA RAIL

STATEMENTS OF NET POSITION

ASSETS	OCTOBER 31,	
	2014	2013
CAPITAL ASSETS		
Road and Equipment Property	\$33,510,101	\$30,682,676
Less Accumulated Depreciation	(16,176,373)	(15,087,979)
Total	17,333,728	15,594,697
Construction Work in Progress	2,821,506	1,748,852
Net Capital Assets	20,155,234	17,343,549
SPECIAL FUNDS		
Cash and Equity in Pooled Investments:		
Debt Service Funds	21,701	21,701
Total Special Funds	21,701	21,701
CURRENT ASSETS		
Cash & Equity in Pooled Investments	9,823,504	6,621,200
Customer Accounts Receivable	3,031,765	2,739,754
Prepayments	1,950,540	1,964,069
Materials and Supplies Inventory.....	842,485	776,268
Total Current Assets	15,648,294	12,101,291
TOTAL ASSETS	\$35,825,229	\$29,466,541

These statements should be read in conjunction with the Notes to Financial Statements contained in the 2013 Annual Report.

NET POSITION AND LIABILITIES	OCTOBER 31,	
	2014	2013
NET POSITION		
Net Investment in Capital Assets.....	\$15,633,209	\$14,247,228
Restricted for:		
Debt Service	21,701	21,701
Unrestricted	10,704,127	8,526,374
TOTAL NET POSITION	26,359,037	22,795,303
LONG-TERM DEBT, NET OF CURRENT MATURITIES		
2006 Senior Lien Revenue Bond	312,763	548,332
State Loans.....	3,656,257	2,093,405
Total Long-Term Liabilities	3,969,020	2,641,737
CURRENT LIABILITIES		
Accounts Payable	411,558	606,721
Customer Deposits	45,900	54,300
Wages Payable	337,438	287,960
Unemployment and other Tax Payables	324,310	234,182
Volume Incentive Payable	833,333	625,001
Current Portion of Long Term Debt	553,005	454,584
Interest Payable	2,463	3,466
Current Portion of Compensated Absences	77,505	83,098
Total Current Liabilities	2,585,512	2,349,312
LONG-TERM LIABILITIES		
On the Job Injury Reserve	731,632	637,246
Long Term Portion of Compensated Absences	697,546	747,880
Other Long-Term Liabilities	1,482,482	295,063
Total Long-Term Liabilities	2,911,660	1,680,189
TOTAL LIABILITIES	9,466,192	6,671,238
TOTAL NET POSITION AND LIABILITIES	\$35,825,229	\$29,466,541

CITY OF TACOMA, WASHINGTON
DEPARTMENT OF PUBLIC UTILITIES
TACOMA RAIL

STATEMENTS OF REVENUE, EXPENSES AND CHANGES IN NET POSITION

	OCTOBER 2014	OCTOBER 2013
OPERATING REVENUES		
Switching Revenues	\$2,297,130	\$1,943,577
Demurrage and Other Operating Revenues	255,953	227,617
Total Operating Revenues	2,553,083	2,171,194
OPERATING EXPENSES		
Maintenance of Way and Structures		
Salaries and Wages	95,145	84,249
Supplies and Expense	158,062	131,065
Mechanical		
Salaries and Wages	171,490	112,243
Supplies and Expense	219,170	182,968
Operations		
Salaries and Wages	772,497	682,113
Supplies and Expense	161,240	98,199
Administration		
Salaries and Wages	158,774	153,000
Supplies and Expense	436,415	259,018
Taxes - State	34,644	31,881
Depreciation	89,105	79,944
Total Operating Expenses	2,296,542	1,814,680
Net Operating Income	256,541	356,514
NON-OPERATING REVENUES (EXPENSES)		
Interest Income	3,623	4,343
Miscellaneous	125,202	79,969
Interest Expense	(2,466)	(3,466)
Total Non-Operating Revenues	126,359	80,846
Contributions	-	-
Total Contributions	-	-
Transfers		
City of Tacoma Gross Earnings Tax	(204,342)	(180,440)
Transfers to other funds	(25,000)	-
Total Transfers	(229,342)	(180,440)
CHANGE IN NET POSITION	\$153,558	\$256,920
TOTAL NET POSITION - JANUARY 1		
TOTAL NET POSITION - OCTOBER 31		

These statements should be read in conjunction with the Management Discussion and Analysis in the September 2014 Financial Report.

YEAR TO DATE			
OCTOBER 31, 2014	OCTOBER 31, 2013	2014/2013 VARIANCE	PERCENT CHANGE
\$22,462,115	\$20,604,101	\$1,858,014	9.0%
2,251,897	2,093,975	157,922	7.5%
<u>24,714,012</u>	<u>22,698,076</u>	<u>2,015,936</u>	8.9%
832,898	754,059	78,839	10.5%
1,250,926	1,189,056	61,870	5.2%
1,286,330	1,123,730	162,600	14.5%
1,973,565	1,857,654	115,911	6.2%
7,397,860	6,890,898	506,962	7.4%
1,092,729	1,184,043	(91,314)	-7.7%
1,696,013	1,654,034	41,979	2.5%
3,204,705	3,261,374	(56,669)	-1.7%
359,276	374,626	(15,350)	-4.1%
891,054	799,442	91,612	11.5%
<u>19,985,356</u>	<u>19,088,916</u>	<u>896,440</u>	4.7%
4,728,656	3,609,160	1,119,496	31.0%
55,518	11,512	44,006	382.3%
743,174	748,125	(4,951)	-0.7%
(29,196)	(39,009)	9,813	-25.2%
<u>769,496</u>	<u>720,628</u>	<u>48,868</u>	6.8%
<u>700,000</u>	<u>-</u>	<u>700,000</u>	100.0%
700,000	-	700,000	100.0%
(2,032,294)	(1,884,455)	(147,839)	7.8%
(25,000)	-	(25,000)	100.0%
<u>(2,057,294)</u>	<u>(1,884,455)</u>	<u>(172,839)</u>	9.2%
4,140,858	2,445,333	\$1,695,525	69.3%
<u>22,218,179</u>	<u>20,349,970</u>		
<u>\$26,359,037</u>	<u>\$22,795,303</u>		

CITY OF TACOMA, WASHINGTON
DEPARTMENT OF PUBLIC UTILITIES
TACOMA RAIL

SUMMARY OF SWITCHING REVENUES AND SWITCHING ACTIVITIES

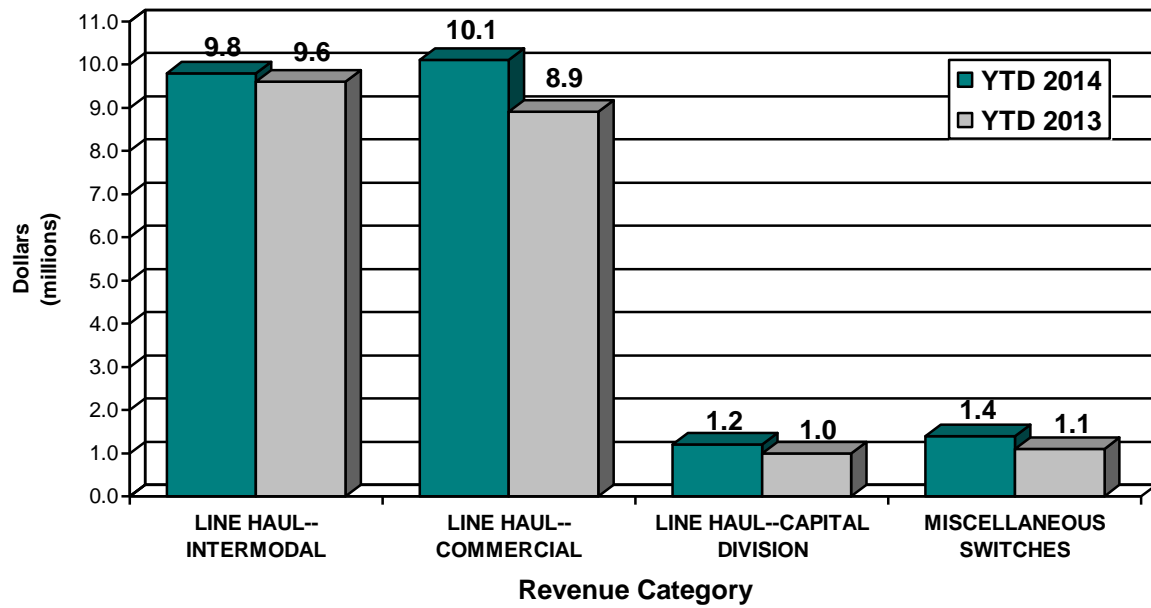
	<u>OCTOBER 2014</u>	<u>OCTOBER 2013</u>
SWITCHING REVENUES		
LINE HAULS--INTERMODAL	\$1,067,155	\$938,763
LINE HAULS--COMMERCIAL	1,012,916	733,335
LINE HAULS--CAPITAL DIVISION	116,309	95,795
MISCELLANEOUS SWITCHES	<u>100,750</u>	<u>175,684</u>
TOTAL SWITCHING REVENUES	<u><u>\$2,297,130</u></u>	<u><u>\$1,943,577</u></u>
 SWITCHING ACTIVITIES (CARS)		
LINE HAULS--INTERMODAL	8,459	5,484
LINE HAULS--COMMERCIAL	2,437	2,410
LINE HAULS--CAPITAL DIVISION	260	213
MISCELLANEOUS SWITCHES	<u>212</u>	<u>127</u>
TOTAL CARS SWITCHED	<u><u>11,368</u></u>	<u><u>8,234</u></u>

YEAR TO DATE			
OCTOBER 31, 2014	OCTOBER 31, 2013	2014/2013 VARIANCE	PERCENT CHANGE
\$9,777,146	\$9,606,118	\$171,028	1.8%
10,124,163	8,925,013	1,199,150	13.4%
1,179,037	976,120	202,917	20.8%
<u>1,381,769</u>	<u>1,096,850</u>	<u>284,919</u>	26.0%
<u>\$22,462,115</u>	<u>\$20,604,101</u>	<u>\$1,858,014</u>	9.0%
60,267	54,428	5,839	10.7%
26,958	25,213	1,745	6.9%
2,628	2,171	457	21.1%
<u>2,635</u>	<u>1,523</u>	<u>1,112</u>	73.0%
<u>92,488</u>	<u>83,335</u>	<u>9,153</u>	11.0%

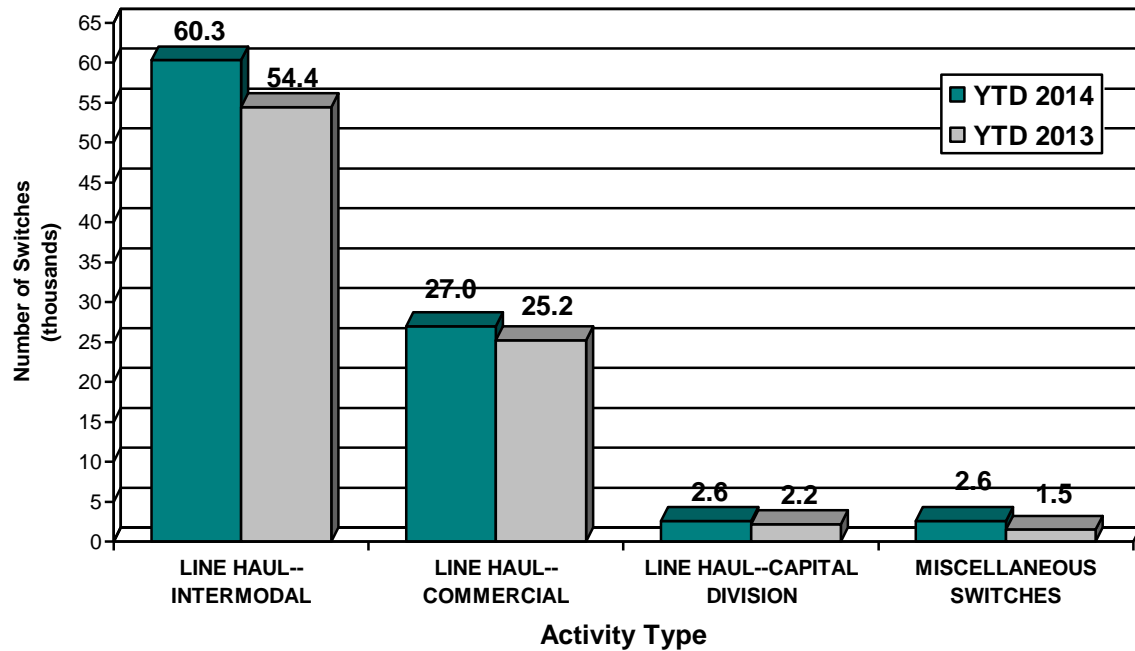
This page has been left blank intentionally.

Supplemental Data

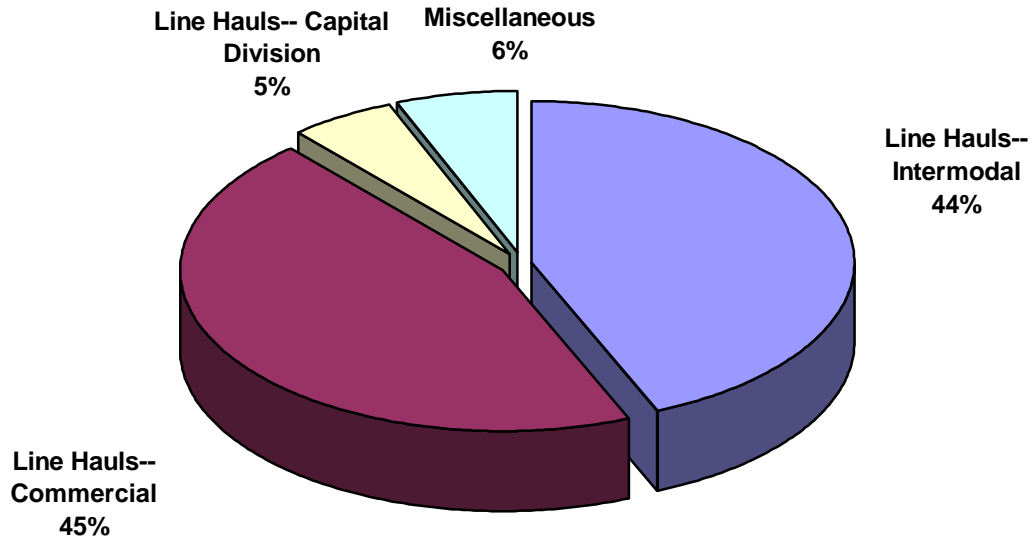
SWITCHING REVENUES
Year to Date - October 2014 & 2013



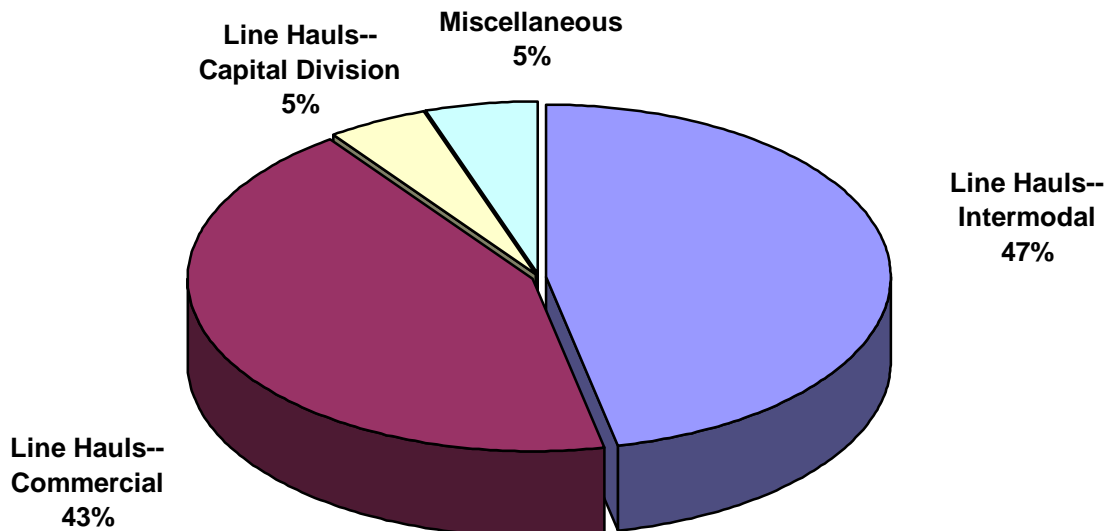
SWITCHING ACTIVITIES
Year to Date - October 2014 & 2013



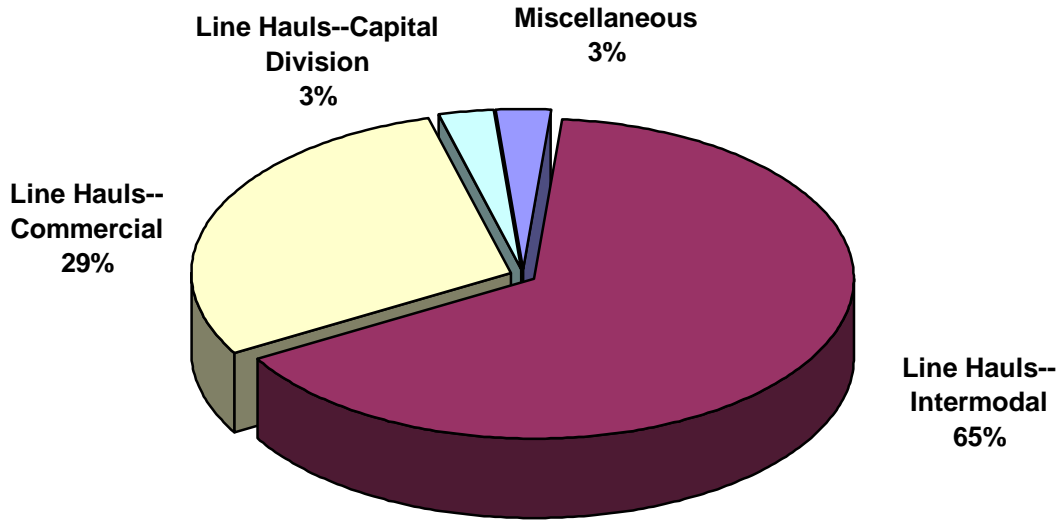
SWITCHING REVENUES
Year to Date - October 2014 (\$22,462,115)



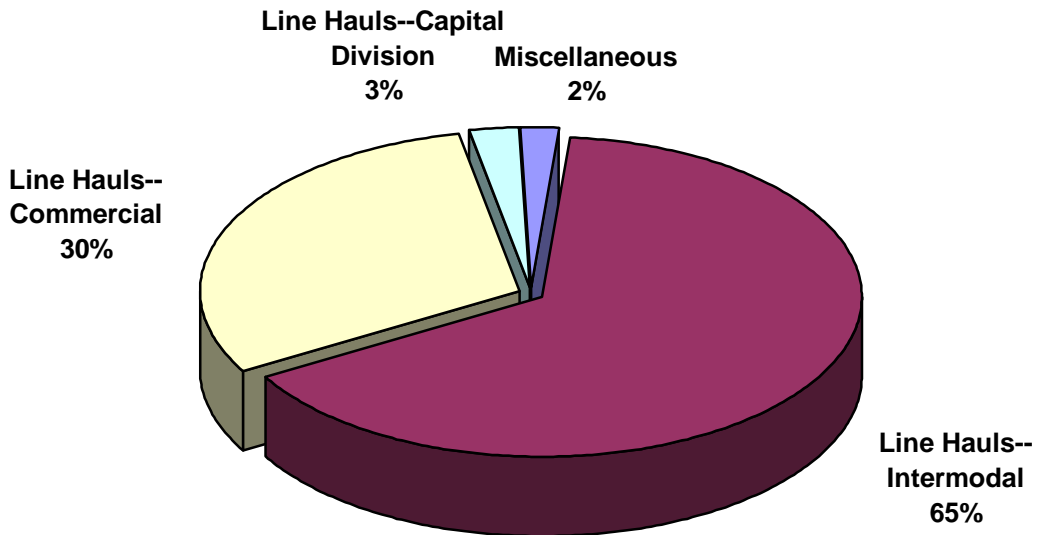
SWITCHING REVENUES
Year to Date - October 2013 (\$20,604,101)



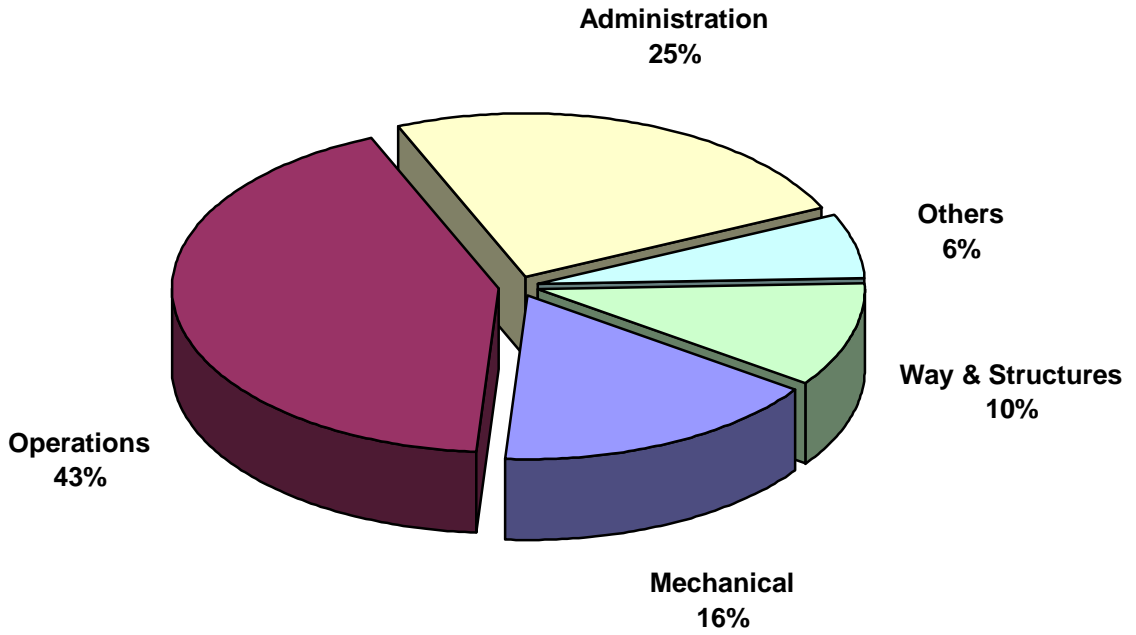
SWITCHING ACTIVITY
Year to Date - October 2014 (92,488 cars)



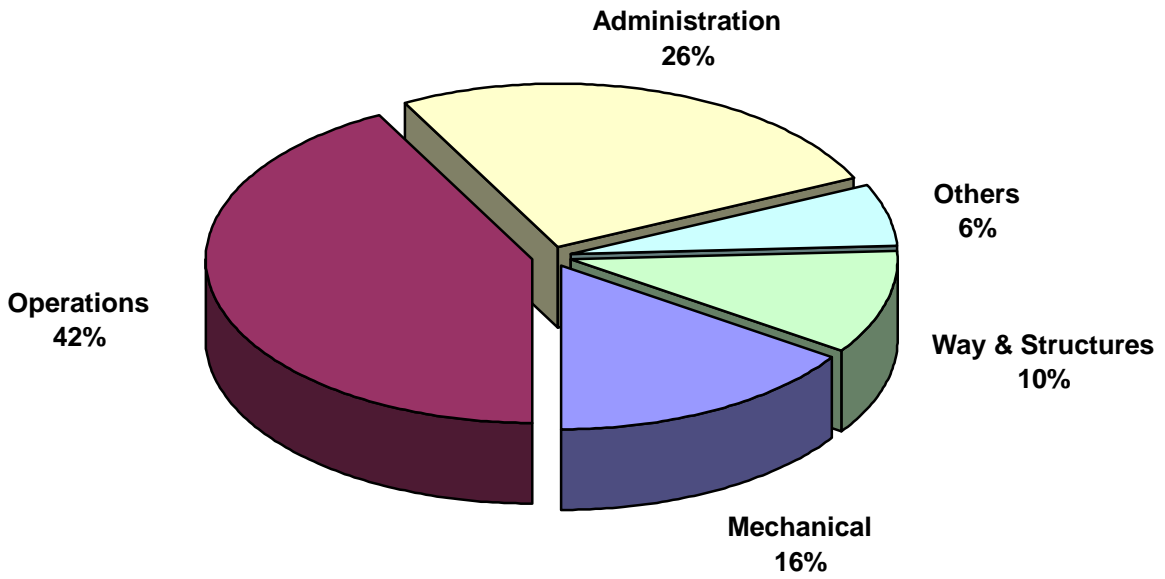
SWITCHING ACTIVITY
Year to Date - October 2013 (83,335 cars)



TOTAL OPERATING EXPENSES
Year to Date - October 2014 (\$19,985,356)



TOTAL OPERATING EXPENSES
Year to Date - October 2013 (\$19,088,916)





The City of Tacoma does not discriminate on the basis of disability in any of its programs, activities, or services. To request this information in an alternative format or to request a reasonable accommodation, please contact the City Clerk's Office at (253) 591-5505. TTY or speech to speech users please dial 711 to connect to Washington Relay Services.