



Tacoma Mall Subarea Art & Placemaking Plan

City of Tacoma | Community and Economic Development

Economic Development Committee
July 29, 2025



1

INTRODUCTION



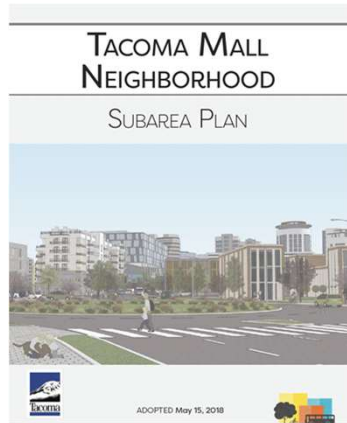
TACOMA MALL SUBAREA ART & PLACEMAKING PLAN

Artists Horatio Hung-Yan Law and Linda M Wysong

2

2

Subarea Plan Background



3

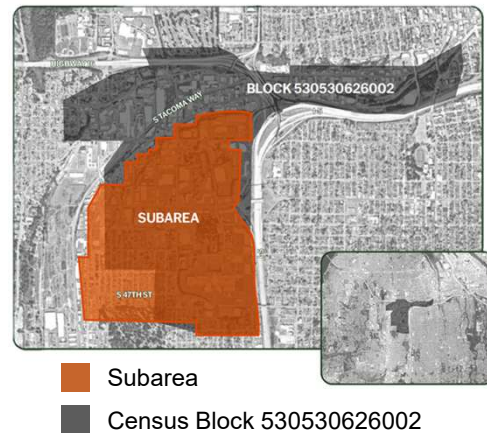
3

Current Conditions

Census Block 530530626002 Equity Data

Tacoma		Census Block
1030 RSEI Score	Toxic Risk	1449 RSEI Score
86°	Urban Heat Island Index	87°
22%	Urban Tree Canopy	9%
53 Micrograms/Meter ³	Ozone Concentration	53 Micrograms/Meter ³
9 Parts/Billion	Particulate Matter	9 Parts/Billion
.35 Tons/Kilometer ²	Diesel Emissions	.42 Tons/Kilometer ²
2,210,089 Weighted Annual Traffic	Heavy Traffic Roadways	3,240,647 Weighted Annual Traffic

Equity Index
Very Low



4

Art & Placemaking Plan Approach

Historically, art was considered separate from daily life. This division that was assumed for centuries has been dissolving. Now, once again, they can come together with joyful creativity.

We are proposing an interdisciplinary approach that breaks the traditional isolation of discipline compartmentalization and moves toward a more integrated community approach.

In order for public art to be successful, no matter how well-crafted or elegant, it must also reflect and speak to the people who live and work in the area.

People are social beings; we thrive when our cities encourage interconnections. We enjoy each other and naturally come together when we are given the opportunity.

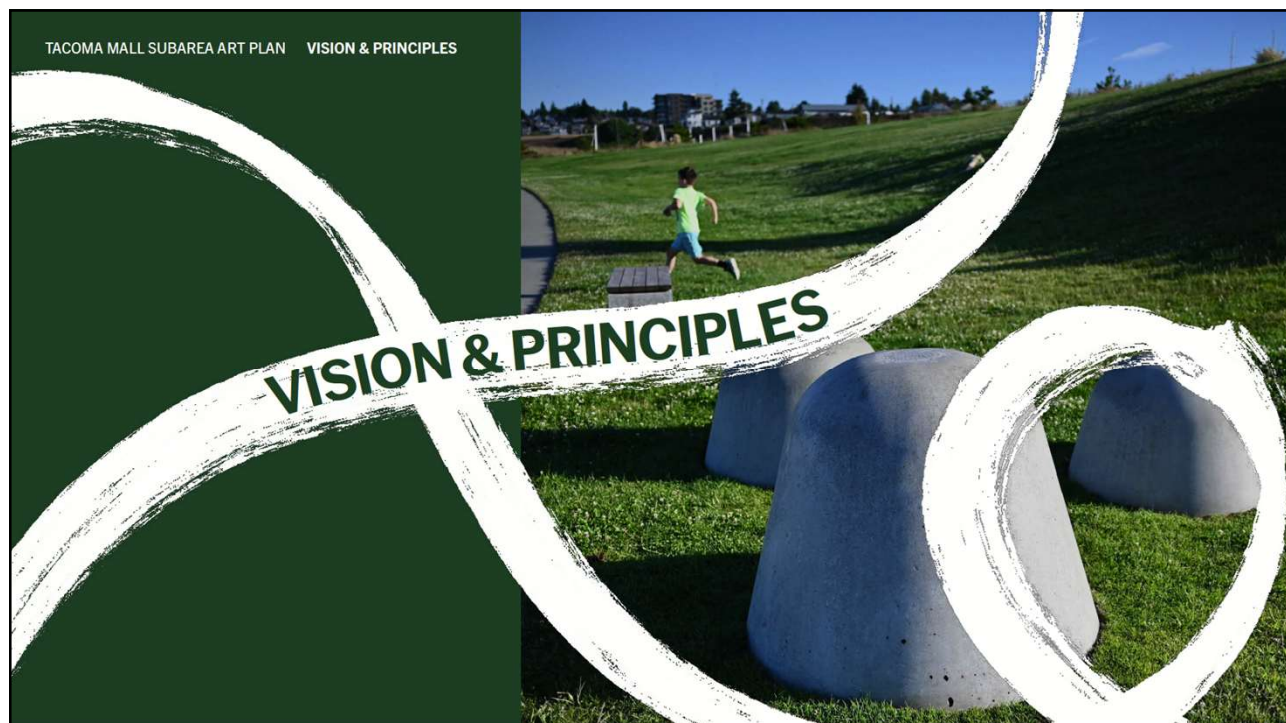
These occasions arise more frequently when art is integrated into thoughtful, walkable and sustainable community.



URBAN PLANNING
ART
SCIENCE
COMMUNITY

5

5



6

Goals



Eye River, Portland, OR, 2014.
Linda Wysong.

Inspire a collective desire for transformation
Consider cross-disciplinary and interagency collaborative strategies
to work toward a green, safe and productive community



Cloud Benches, Lincoln District Revitalization, Tacoma, WA, 2018.
Horatio Hung-Yan Law.



Urban Hydrology, Portland, OR, 2009.
Fernando D'Agostino.

7

7

Research and Methods



Water and Green Spaces



Skate Community Workshop



Place, History, and Community

8

8



Priority Projects

- 1 **Art and Gardening Program**
- 2 **Madison Park and Creative Playground**
- 3 **Flume Trail Connection**
- 4 **Mini Park**
at Pine Street Time Oil Wayside
- 5 **Loop Road Pedestrian Crossings**
- 6 **Mini Park**
at Traffic Triangle on S. 47th and S. Pine

9

Priority Integrated Art Opportunities

Temporary Celebrations and Events

Small matching grants have the potential to be powerful incentives for transforming space and building community. These can also establish communication with the business and property owners. Temporary events are building blocks for future transformation.



Serial Transportation Opportunities

Wayfinding, tree planting, traffic box wraps. These opportunities are not limit to a specific site. They are scalable and can be utilized on any trail, road, or transportation project.

10

Example 1: Art and Gardening



11

11

Example 2: Connection at 45th



12

12

Example 3: Integrated Opportunities

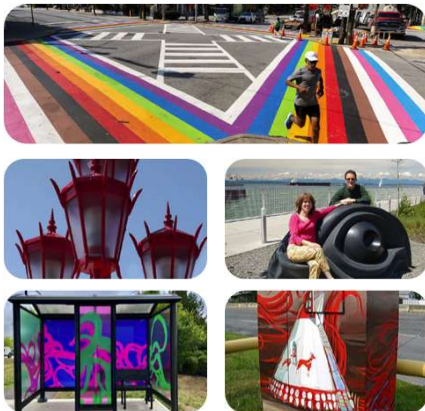


13

13

Example 4: Integrated Opportunities

Serial Opportunities in Transportation



71

14

Community Celebrations and Events

14

Next Steps



★★★★ Art Opportunities

- 1 ★★★★★ Art and Gardening Program
- 2 ★★★★★ Park and Creative Play Area
- 3 ★★★★★ Connecting Trail
- 4 ★★★★★ Community Center
- 5 ★★★★★ Time Oil Industrial Park Site
- 6 ★★★★★ Mini Park
- 7 ★★★★★ Water Education Park
- 8 ★★★★★ Lincoln Heights Park Improvements

- 9 ★ Tiny Forest
- 10 ★★★★★ Safe Crossing and Path
- 11 ★★★★★ South Steele Street Greenway
- 12 ★★★★★ Cross-bridge Artist-Designed Wayfinding or Lighting
- 13 ★ Child-Friendly Green Area
- 14 ★★★★★ Traffic Triangle
- 15 ★ Green Transit Centers
- 16 ★ Temporary Options
- 17 ★ Loop Road

15

Closing

We need art, in the arrangements of cities as well as in the other realms of life, to help explain life to us, to show us meanings, to illuminate the relationship between the life that each of us embodies and the life outside us.

We need art most, perhaps, to reassure us of our humanity.

Jane Jacobs
The Death and Life of Great American Cities



Chinese Reconciliation Park

16

16



Tacoma Mall Subarea Art & Placemaking Plan

City of Tacoma | Community and Economic Development

**Economic Development Committee
July 29, 2025**

