

# Tacoma Dome Link Extension

## Draft EIS Publication Update

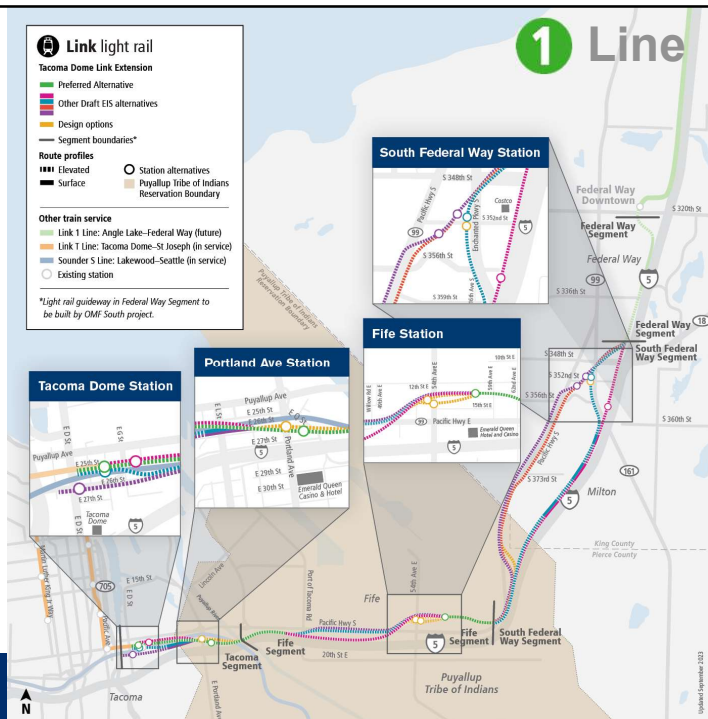
Tacoma City Council  
February 4, 2025



1

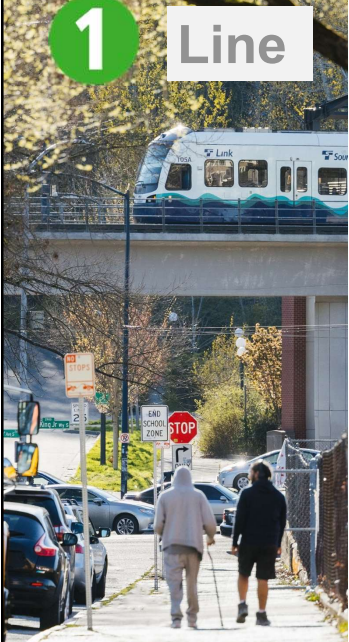
## Tacoma Dome Link Extension (TDLE)

- Forecasted Service: 2035
- Currently in Draft EIS phase
- ~10 miles, 4 stations
- Fife & South Federal Way stations include 500 parking stalls in 2038
- Puyallup River light rail bridge
- 10% design level



2

2




1

Line


## Tacoma Dome Link Extension

- ✓ Included in Sound Transit 3 (ST3) plan.
- ✓ Completes “light rail spine” connecting Pierce County & the region’s 2<sup>nd</sup> largest city (Tacoma) to light rail network.
- ✓ Connects the region to employment, services and educational opportunities in Pierce County and vice versa.
- ✓ First light rail line to serve a Tribal Reservation in the U.S.
- ✓ 24,000 to 36,000 daily transit riders.
- ✓ Tacoma Dome Station to Sea-Tac Airport in 35 minutes.
- ✓ Federal Way to Tacoma Dome Station in 20 minutes.
- ✓ Fife to Tacoma Dome Station in 6 minutes.


3


3

## Project timeline



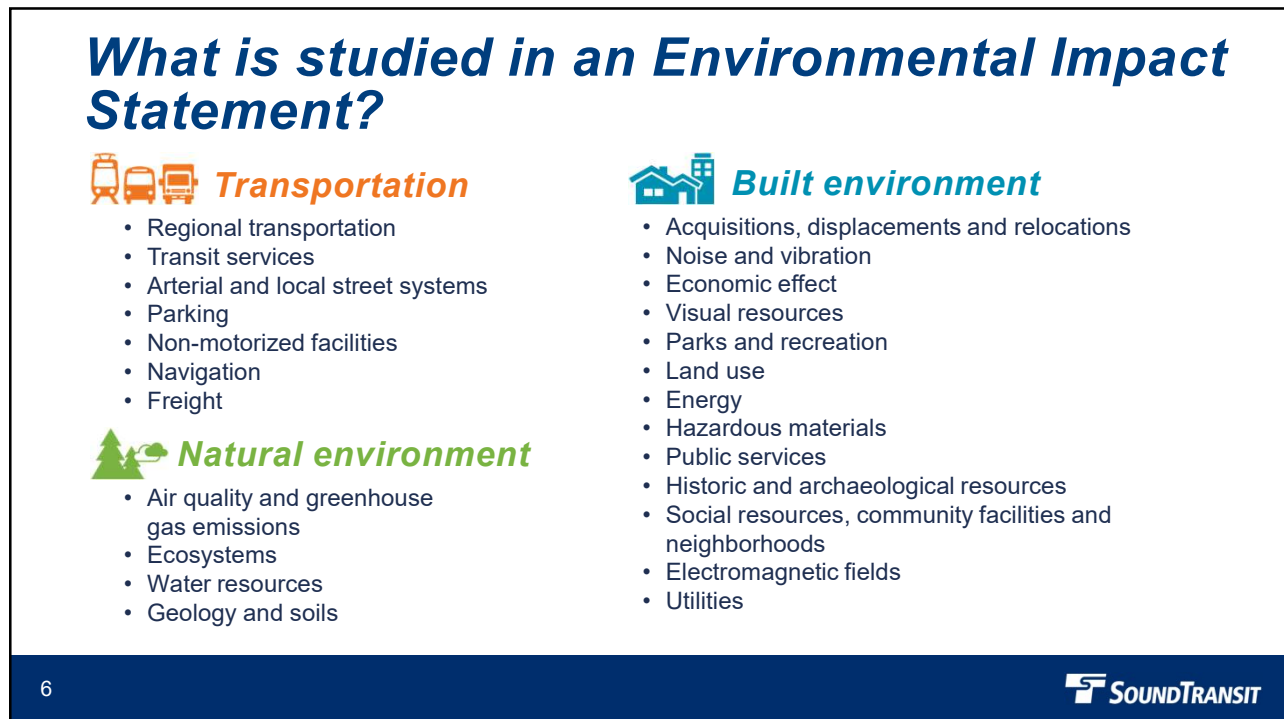
- ✓ **2018:** Early scoping
- ✓ **2019:** Scoping
- ✓ **July 2019:** Board identified Preferred Alternative (PA) and other alternatives to study in Draft EIS
- ✓ **March 2023:** Board action adds additional route & station options to Draft EIS and removed PA designation in South Federal Way
  - **December 13, 2024 – February 10, 2025:** 60-day comment period
  - **Q2 2025:** Anticipated Board action to confirm or modify the PA

4


4



5



6

# Tacoma Alternative Comparison

7

## Tacoma Segment Draft EIS Key Findings

### Preferred Tacoma 25th Street-West

- Construction access restrictions
- Fewest business displacements (9)
- Temporary full closure of E 25th St & T Line

### Tacoma 25th Street-East

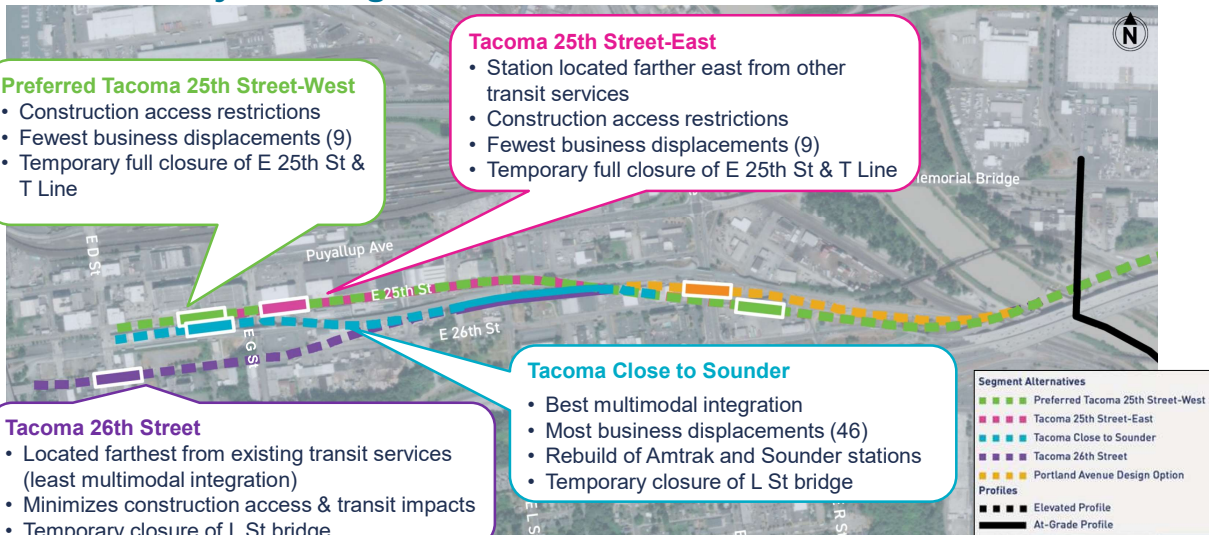
- Station located farther east from other transit services
- Construction access restrictions
- Fewest business displacements (9)
- Temporary full closure of E 25th St & T Line

### Tacoma 26th Street

- Located farthest from existing transit services (least multimodal integration)
- Minimizes construction access & transit impacts
- Temporary closure of L St bridge

### Tacoma Close to Sounder

- Best multimodal integration
- Most business displacements (46)
- Rebuild of Amtrak and Sounder stations
- Temporary closure of L St bridge



8 Information for illustration only. Please refer to Draft EIS for further detail.



8

## Tacoma Alternative Comparison

Performance rating key

Lower  
performing



Higher  
performing

	Tacoma 25th Street-West	Tacoma 25th Street-East	Tacoma Close to Sounder	Tacoma 26th Street
<b>Business displacements</b> <i>Permanent impacts</i>	9	9	43	13
<b>Visual impacts</b>	Guideway may create "tunnel effect" on E 25th St	Guideway may create "tunnel effect" on E 25th St	Moderate visual changes near the station	Altered views from Tacoma Dome and LeMay Museum
<b>Construction impacts</b> <i>Transportation impacts</i>	Temp. full closure of E 25th St & potential T Line closures	Temp. full closure of E 25th St & potential T Line closures	Temp. full closure of L Street bridge, Rebuild of Amtrak and Sounder stations	Temp. full closure of L Street bridge and E 26th St
<b>Construction impacts</b> <i>Access restrictions</i>	Access restrictions on E 25th St including Freighthouse Square	Access restrictions on E 25th St including Freighthouse Square	Fewer construction access impacts on E 25th St	Access restrictions on E 26th St and E 27th St
<b>Construction impacts</b> <i>Utility impacts</i>	More utility impacts with overhead impacts along E 25th St	More utilities impacts with overhead impacts along E 25th St	Fewest impacts to existing utilities	Fewest utilities impacts with some on E 26th St
<b>Comparative costs*</b>	\$\$	\$\$	\$	\$\$

9

\*Comparative costs serve as a basis for comparing design alternatives and options; they are not intended as a method for establishing the project budget.




9

## Tacoma Dome Station Comparison

10

## Tacoma Dome station comparison

Performance rating key		Tacoma 25th Street-West Station	Tacoma 25th Street-East Station	Tacoma Close to Sounder Station	Tacoma 26th Street Station
Lower performing	  				
Higher performing					
<b>Pedestrian experience</b>		Close connections to other transit, parking, & Tacoma Dome	Connections to other transit, parking, & Tacoma Dome are further east	Close connections to other transit, parking, & Tacoma Dome	Closest to Tacoma Dome but farthest for connections to other transit and parking
<b>Construction</b>		Temp. relocation/closure of T Line station	Temp. relocation/closure of T Line station	Requires rebuild of Amtrak & Sounder stations	No impacts to other transit stations
<b>Multimodal integration</b>		Close to Sounder & T Line stations	Farther east from Sounder & T Line stations	Potential for fully integrated transit hub	Farthest from Sounder & T Line stations

<sup>11</sup> Information for illustration only. Please refer to Draft EIS for further detail.



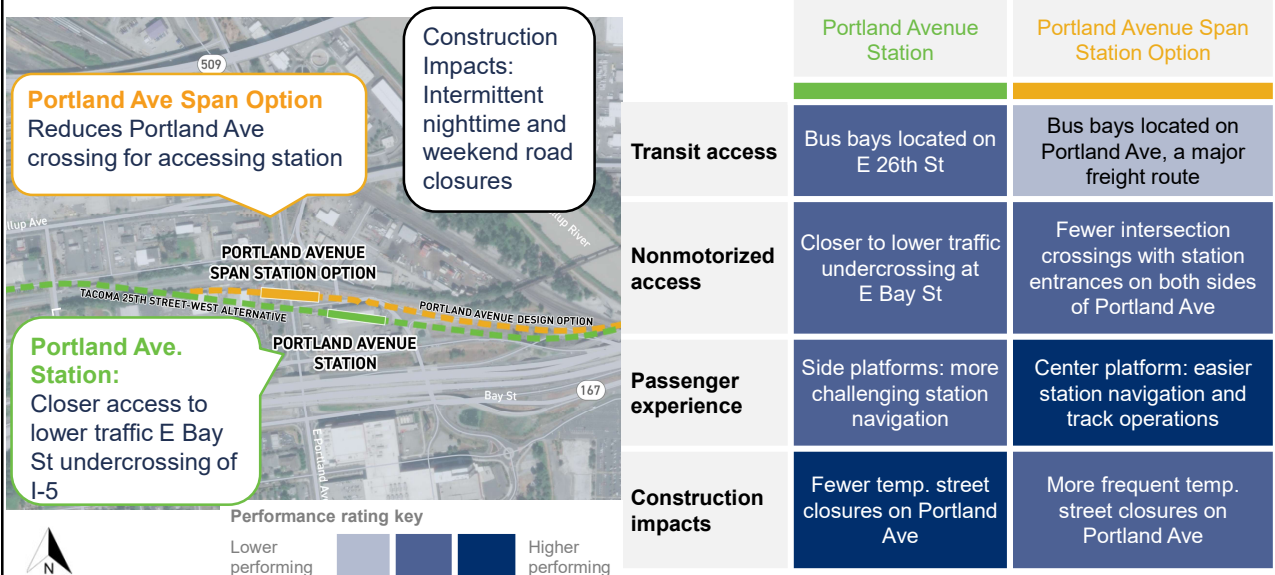
11

## Portland Avenue Station Comparison

12



## Portland Avenue Station Comparison

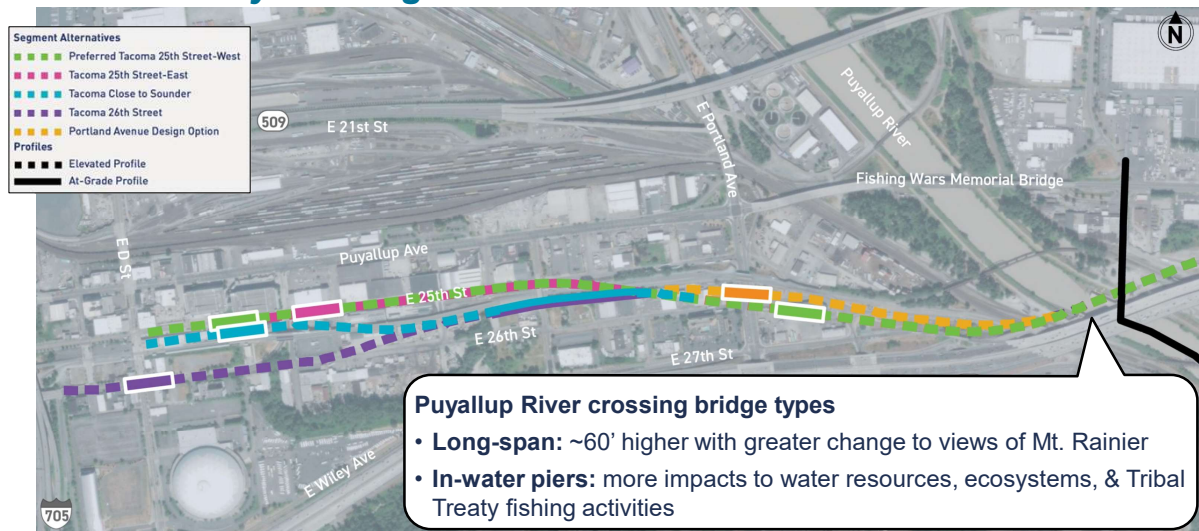


13 Information for illustration only. Please refer to Draft EIS for further detail.



13

## Puyallup River Light Rail Bridge Draft EIS Key Findings



14 Information for illustration only. Please refer to Draft EIS for further detail.



14

## ***Puyallup River Light Rail Bridge Trade-offs***

***Clear-span option:*** greater change to views of Mt. Rainier

***In-river pier option:*** greater impact to ecosystems and water resources & Tribal fishing rights



***Existing***

***In-river pier option***

***Clear-span option***

<sup>15</sup> Information for illustration only. Please refer to Draft EIS for further detail.



15

## ***Community Engagement***

16





# ***Tacoma Dome Access Improvements (TDAI) Engagement Update***

19

## ***Tacoma Dome Access Improvements (TDAI)***

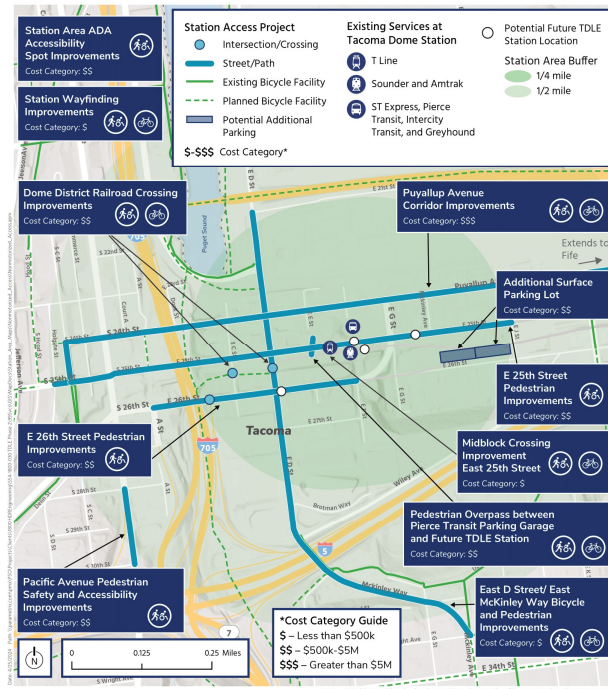
- Project initiated by ST2
- To improve Tacoma Dome Station access through parking and/or non-motorized options:
  - Surface parking lot with up to 300 spaces
  - Flexible approach via pedestrian, bicycle, or other non-motorized access improvements



20

20

## TDAI potential projects



21

21

## TDAI - Organizations we engaged

We briefed the following organizations and commissions during the TDAI comment period (Aug. 30 – Oct. 11):

- Transportation Commission
- Bicycle Pedestrian Technical Advisory Group
- Downtown On the Go
- New Tacoma Neighborhood Council
- ETC Network
- TOD Task Force
- Pierce Transit
- Tacoma Area Commission on Disabilities

We also received comments via a letter from the following organizations and commissions:

- Transportation Commission
- Bicycle Pedestrian Technical Advisory Group
- Downtown On the Go
- WSDOT
- Tacoma Area Commission on Disabilities

22

22

## ***TDAI – Next steps***

- Begin conceptual engineering and environmental work on all potential projects in Q1 2025
- ST Board determines projects to be built in late Q2 2025
- Target completion date by 2032



<sup>23</sup> *These dates are subject to change.*



23

*Thank you.*



 [soundtransit.org](https://soundtransit.org)



24