
MAY

TACOMA RAIL

2014

**FINANCIAL
REPORT**



Public Utility Board

DAVID NELSON

Chair

WOODROW JONES

Vice-Chair

BRYAN FLINT

Secretary

MARK PATTERSON

Member

MONIQUE TRUDNOWSKI

Member

WILLIAM A. GAINES
Director of Utilities/CEO

DALE KING
Rail Superintendent

ANDREW CHERULLO
Finance Director

DEPARTMENT OF PUBLIC UTILITIES
CITY OF TACOMA

CITY OF TACOMA, WASHINGTON
DEPARTMENT OF PUBLIC UTILITIES, BELT LINE DIVISION
Doing Business As

TACOMA RAIL

TABLE OF CONTENTS

Note: These financial statements are interim, unaudited reports prepared primarily for the use of management. Not all transactions reported in these statements have been recorded on the full accrual basis of accounting or in accordance with generally accepted accounting principles.

STATEMENTS OF NET POSITION	2 - 3
STATEMENTS OF REVENUES, EXPENSES AND CHANGES IN NET POSITION	4 - 5
SUMMARY OF SWITCHING REVENUES AND SWITCHING ACTIVITIES	6 - 7
SUPPLEMENTAL DATA	9 - 13

CITY OF TACOMA, WASHINGTON
DEPARTMENT OF PUBLIC UTILITIES
TACOMA RAIL

STATEMENTS OF NET POSITION

ASSETS	MAY 31,	
	2014	2013
CAPITAL ASSETS		
Road and Equipment Property	\$33,504,027	\$30,672,841
Less Accumulated Depreciation	(15,730,846)	(14,688,258)
Total	17,773,181	15,984,583
Construction Work in Progress	1,597,339	348,017
Net Capital Assets	19,370,520	16,332,600
 SPECIAL FUNDS		
Cash and Equity in Pooled Investments:		
Debt Service Funds	43,403	43,402
Total Special Funds	43,403	43,402
 CURRENT ASSETS		
Cash & Equity in Pooled Investments	9,125,442	7,759,657
Customer Accounts Receivable	2,931,346	2,586,528
Prepayments	2,055,982	2,056,415
Materials and Supplies Inventory.....	879,023	667,176
Total Current Assets	14,991,793	13,069,776
 TOTAL ASSETS	 \$34,405,716	 \$29,445,778

These statements should be read in conjunction with the Notes to Financial Statements contained in the 2013 Annual Report.

NET POSITION AND LIABILITIES	MAY 31,	
	2014	2013
NET POSITION		
Net Investment in Capital Assets.....	\$15,270,252	\$13,850,848
Restricted for:		
Debt Service	43,403	43,402
Unrestricted	9,158,688	7,906,581
TOTAL NET POSITION	24,472,343	21,800,831
LONG-TERM DEBT, NET OF CURRENT MATURITIES		
2006 Senior Lien Revenue Bond	548,332	771,620
State Loans.....	3,147,184	1,487,202
Total Long-Term Liabilities	3,695,516	2,258,822
CURRENT LIABILITIES		
Accounts Payable	798,212	554,754
Customer Deposits	47,250	54,300
Wages Payable	351,833	311,396
Unemployment and other Tax Payables	270,359	239,270
Volume Incentive Payable	1,416,669	2,250,000
Current Portion of Long Term Debt	404,753	222,929
Interest Payable	5,942	7,895
Current Portion of Compensated Absences	77,505	83,098
Total Current Liabilities	3,372,523	3,723,642
LONG-TERM LIABILITIES		
On the Job Injury Reserve	685,306	619,540
Long Term Portion of Compensated Absences	697,546	747,880
Other Long-Term Liabilities	1,482,482	295,063
Total Long-Term Liabilities	2,865,334	1,662,483
TOTAL LIABILITIES	9,933,373	7,644,947
TOTAL NET POSITION AND LIABILITIES	\$34,405,716	\$29,445,778

CITY OF TACOMA, WASHINGTON
DEPARTMENT OF PUBLIC UTILITIES
TACOMA RAIL

STATEMENTS OF REVENUE, EXPENSES AND CHANGES IN NET POSITION

	MAY 2014	MAY 2013
OPERATING REVENUES		
Switching Revenues	\$2,467,195	\$2,112,965
Demurrage and Other Operating Revenues	229,872	201,746
Total Operating Revenues	2,697,067	2,314,711
OPERATING EXPENSES		
Maintenance of Way and Structures		
Salaries and Wages	82,952	91,627
Supplies and Expense	75,570	90,537
Mechanical		
Salaries and Wages	120,696	114,813
Supplies and Expense	195,229	206,590
Operations		
Salaries and Wages	712,890	789,251
Supplies and Expense	98,840	95,526
Administration		
Salaries and Wages	174,474	168,415
Supplies and Expense	407,824	383,740
Taxes - State	41,839	43,765
Depreciation	89,105	79,944
Total Operating Expenses	1,999,419	2,064,208
Net Operating Income	697,648	250,503
NON-OPERATING REVENUES (EXPENSES)		
Interest Income	5,891	6,733
Miscellaneous	77,033	80,892
Interest Expense	(2,971)	(3,948)
Total Non-Operating Revenues	79,953	83,677
Contributions - Grants	-	-
Total Contributions	-	-
Transfers		
City of Tacoma Gross Earnings Tax	(234,592)	(201,896)
CHANGE IN NET POSITION	\$543,009	\$132,284
TOTAL NET POSITION - JANUARY 1		
TOTAL NET POSITION - MAY 31		

These statements should be read in conjunction with the Management Discussion and Analysis in the March 2014 Financial Report.

YEAR TO DATE

<u>MAY 31,</u> <u>2014</u>	<u>MAY 31,</u> <u>2013</u>	<u>2014/2013</u> <u>VARIANCE</u>	<u>PERCENT</u> <u>CHANGE</u>
\$10,866,598	\$10,554,322	\$312,276	3.0%
881,880	1,162,891	(281,011)	-24.2%
<u>11,748,478</u>	<u>11,717,213</u>	<u>31,265</u>	<u>0.3%</u>
392,600	393,336	(736)	-0.2%
505,183	464,593	40,590	8.7%
566,890	565,286	1,604	0.3%
844,310	959,316	(115,006)	-12.0%
3,485,690	3,474,914	10,776	0.3%
438,670	570,620	(131,950)	-23.1%
885,327	847,954	37,373	4.4%
1,425,138	1,764,562	(339,424)	-19.2%
173,474	205,890	(32,416)	-15.7%
445,527	399,721	45,806	11.5%
<u>9,162,809</u>	<u>9,646,192</u>	<u>(483,383)</u>	<u>-5.0%</u>
2,585,669	2,071,021	514,648	24.8%
27,121	24,302	2,819	11.6%
380,158	339,368	40,790	12.0%
(15,603)	(20,465)	4,862	-23.8%
<u>391,676</u>	<u>343,205</u>	<u>48,471</u>	<u>14.1%</u>
250,000	-	250,000	100.0%
<u>250,000</u>	<u>-</u>	<u>250,000</u>	<u>100.0%</u>
(973,181)	(963,365)	(9,816)	1.0%
2,254,164	1,450,861	\$803,303	55.4%
<u>22,218,179</u>	<u>20,349,970</u>		
<u><u>\$24,472,343</u></u>	<u><u>\$21,800,831</u></u>		

CITY OF TACOMA, WASHINGTON
DEPARTMENT OF PUBLIC UTILITIES
TACOMA RAIL

SUMMARY OF SWITCHING REVENUES AND SWITCHING ACTIVITIES

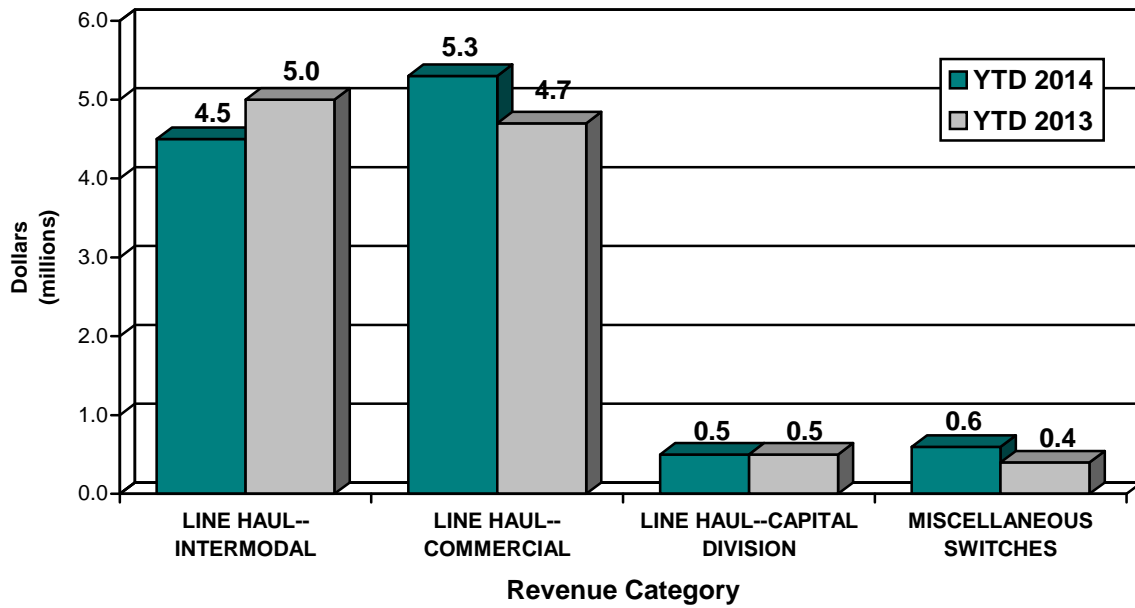
	MAY 2014	MAY 2013
SWITCHING REVENUES		
LINE HAULS--INTERMODAL	\$1,050,222	\$1,031,794
LINE HAULS--COMMERCIAL	1,097,747	971,943
LINE HAULS--CAPITAL DIVISION	90,909	96,030
MISCELLANEOUS SWITCHES	228,317	13,198
TOTAL SWITCHING REVENUES	\$2,467,195	\$2,112,965
 SWITCHING ACTIVITIES (CARS)		
LINE HAULS--INTERMODAL	6,694	5,935
LINE HAULS--COMMERCIAL	3,064	2,491
LINE HAULS--CAPITAL DIVISION	203	213
MISCELLANEOUS SWITCHES	320	166
TOTAL CARS SWITCHED	10,281	8,805

YEAR TO DATE			
<u>MAY 31,</u> <u>2014</u>	<u>MAY 31,</u> <u>2013</u>	<u>2014/2013</u> <u>VARIANCE</u>	<u>PERCENT</u> <u>CHANGE</u>
\$4,505,292	\$5,001,789	(\$496,497)	-9.9%
5,261,786	4,666,542	595,244	12.8%
538,466	491,722	46,744	9.5%
<u>561,054</u>	<u>394,269</u>	<u>166,785</u>	<u>42.3%</u>
<u>\$10,866,598</u>	<u>\$10,554,322</u>	<u>\$312,276</u>	<u>3.0%</u>
28,526	27,612	914	3.3%
13,472	13,523	(51)	-0.4%
1,202	1,095	107	9.8%
<u>1,139</u>	<u>811</u>	<u>328</u>	<u>40.4%</u>
<u>44,339</u>	<u>43,041</u>	<u>1,298</u>	<u>3.0%</u>

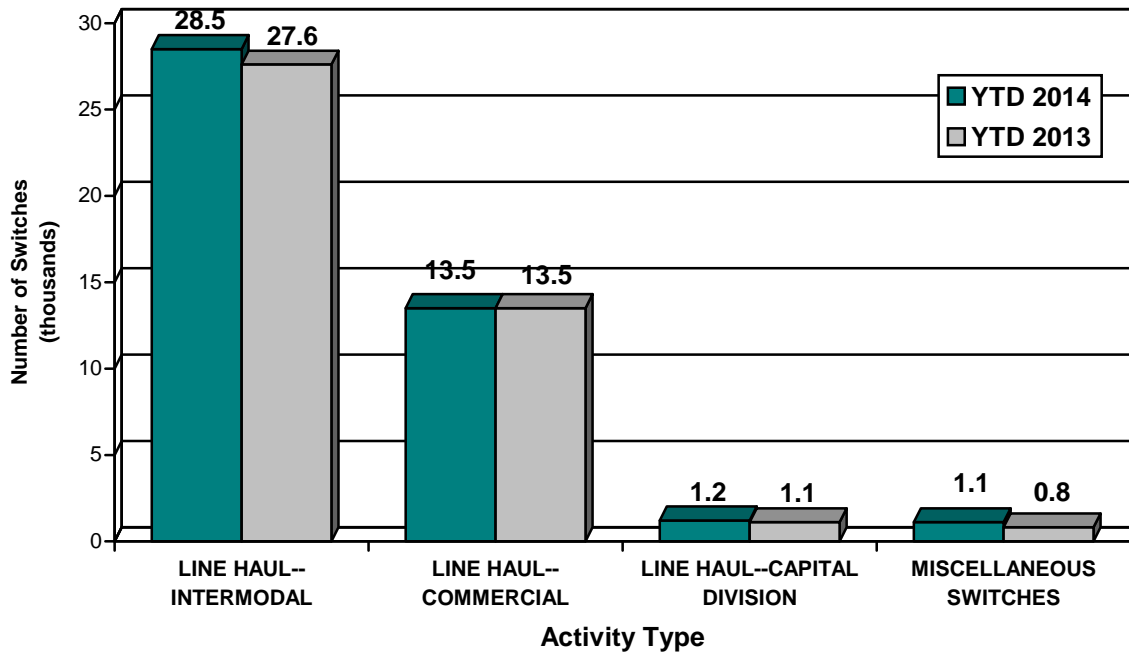
This page has been left blank intentionally.

Supplemental Data

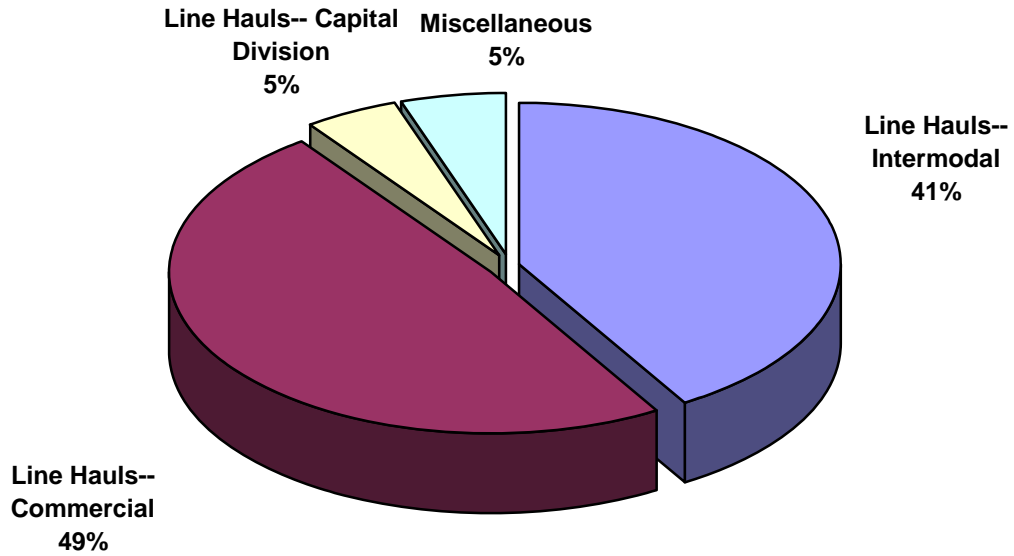
SWITCHING REVENUES
Year to Date - May 2014 & 2013



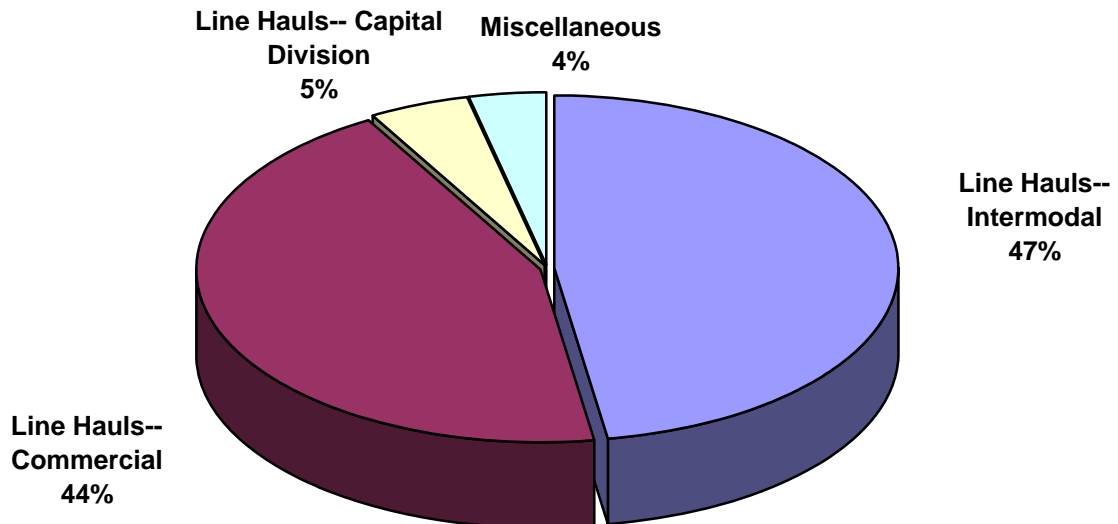
SWITCHING ACTIVITIES
Year to Date - May 2014 & 2013



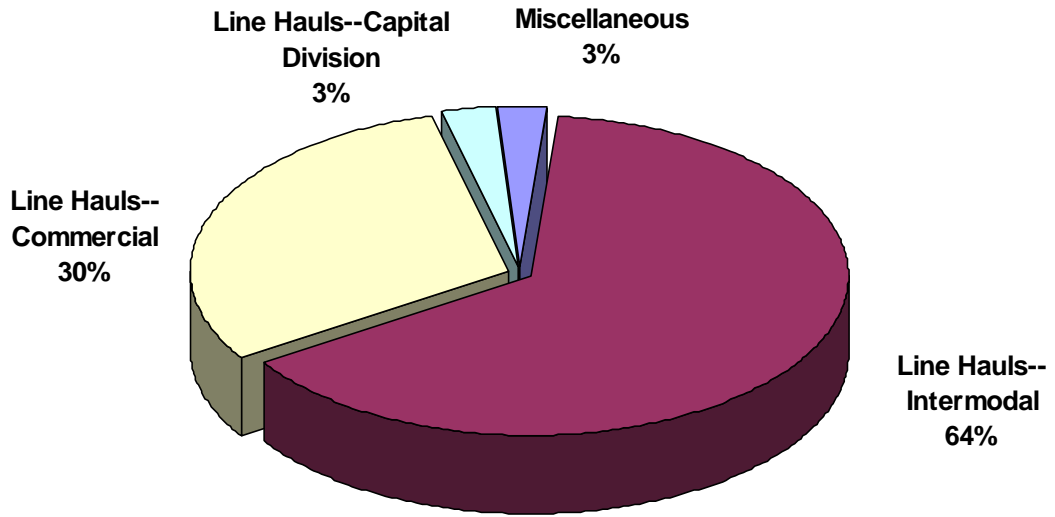
SWITCHING REVENUES
Year to Date - May 2014 (\$10,866,598)



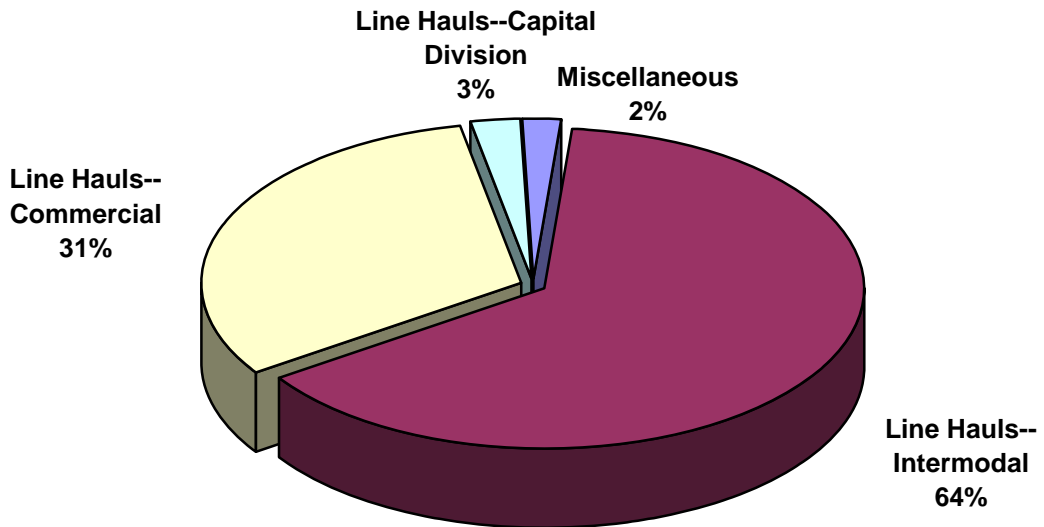
SWITCHING REVENUES
Year to Date - May 2013 (\$10,544,322)



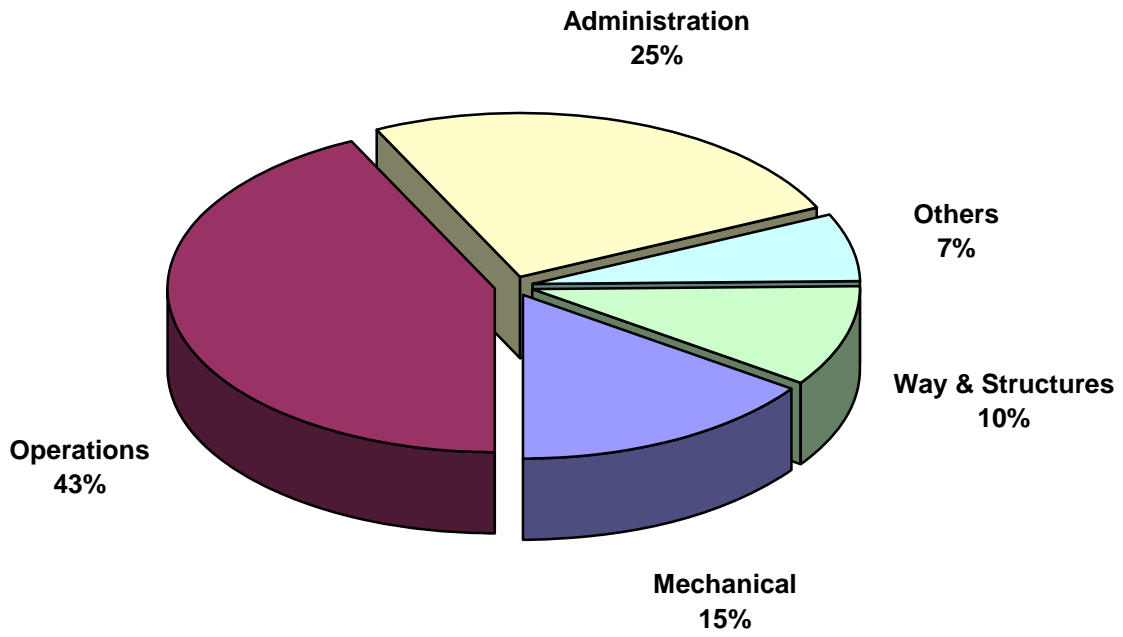
SWITCHING ACTIVITY
Year to Date - May 2014 (44,339 cars)



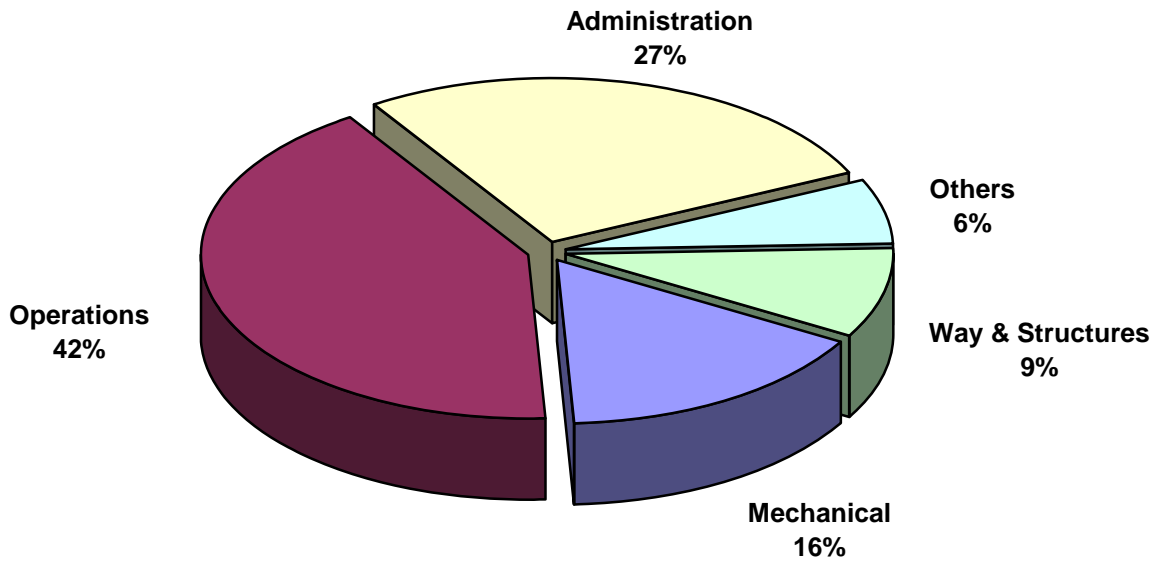
SWITCHING ACTIVITY
Year to Date - May 2013 (43,041 cars)



TOTAL OPERATING EXPENSES
Year to Date - May 2014 (\$9,162,809)



TOTAL OPERATING EXPENSES
Year to Date - May 2013 (\$9,646,192)





The City of Tacoma does not discriminate on the basis of disability in any of its programs, activities, or services. To request this information in an alternative format or to request a reasonable accommodation, please contact the City Clerk's Office at (253) 591-5505. TTY or speech to speech users please dial 711 to connect to Washington Relay Services.