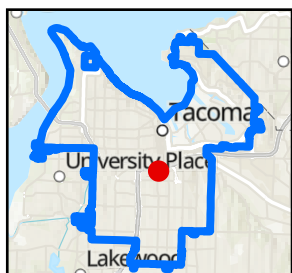
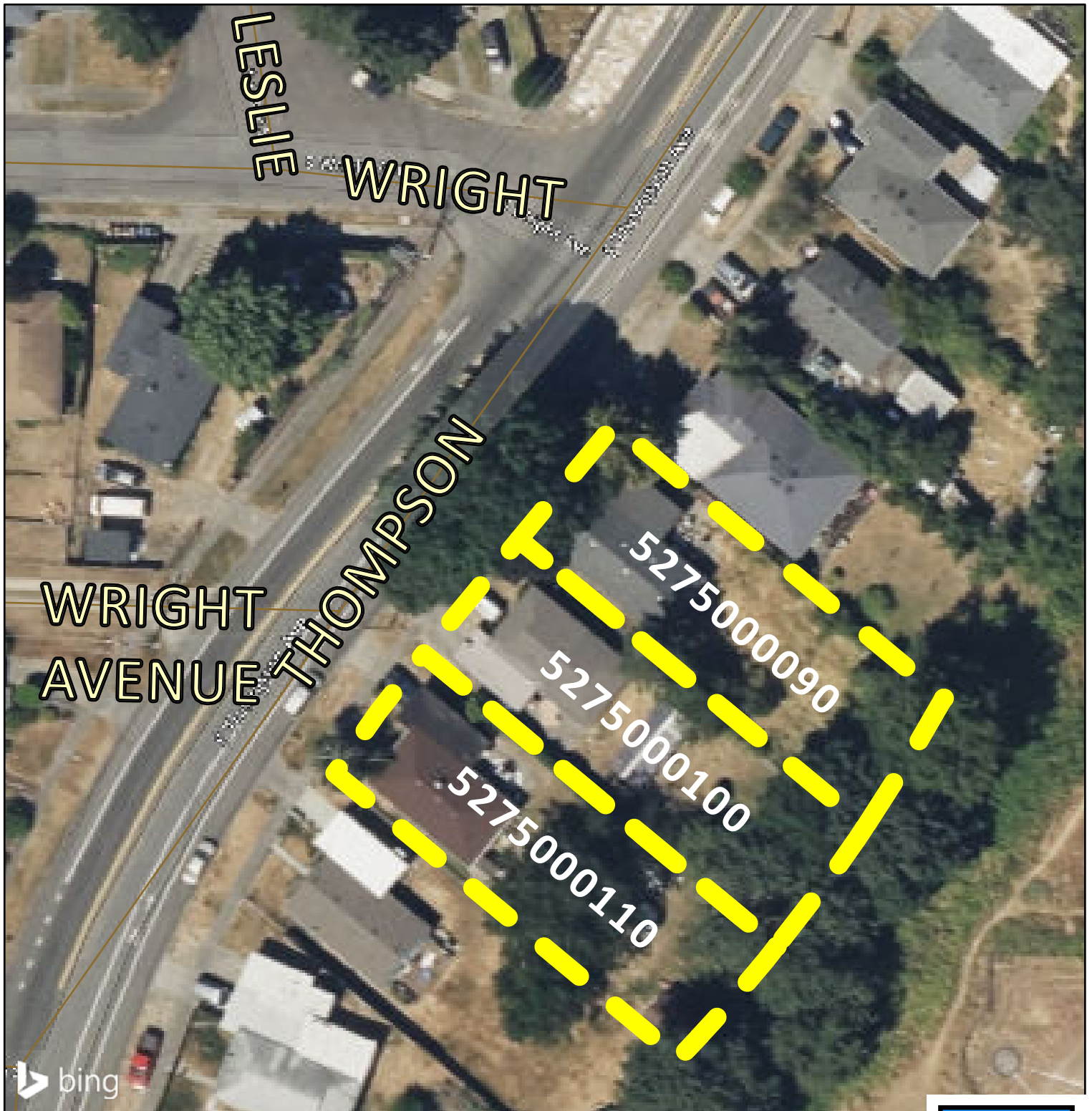


City of Tacoma | Proposed Property Tax Exemption Project

MFTE23-0009

3243, 3247, 3251 South Thompson Avenue, Tacoma, WA 98418
5275000100, 5275000110, 5275000090



Tax Parcel Number
● 5275000100, 5275000110, 5275000090

City of Tacoma
IT GIS Department
GIS Analysis & Data Services

