
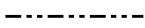


LEGEND:

- RELEASE OF EASEMENT AREA - 
- UPRRCO. R/W OUTLINED - 
- RELEASE OF EASEMENT AREA = 2.1 ACRES +/-

NOTE: BEFORE YOU BEGIN ANY WORK, SEE AGREEMENT FOR FIBER OPTIC PROVISIONS.

EXHIBIT "A"

UNION PACIFIC RAILROAD COMPANY

TACOMA, PIERCE COUNTY, WASHINGTON

M.P. 146 - SEATTLE SUB.

MAP OWRN V-2 / 2

SCALE: 1" = 300'

OFFICE OF REAL ESTATE
OMAHA, NEBRASKA DATE: 6-18-2019

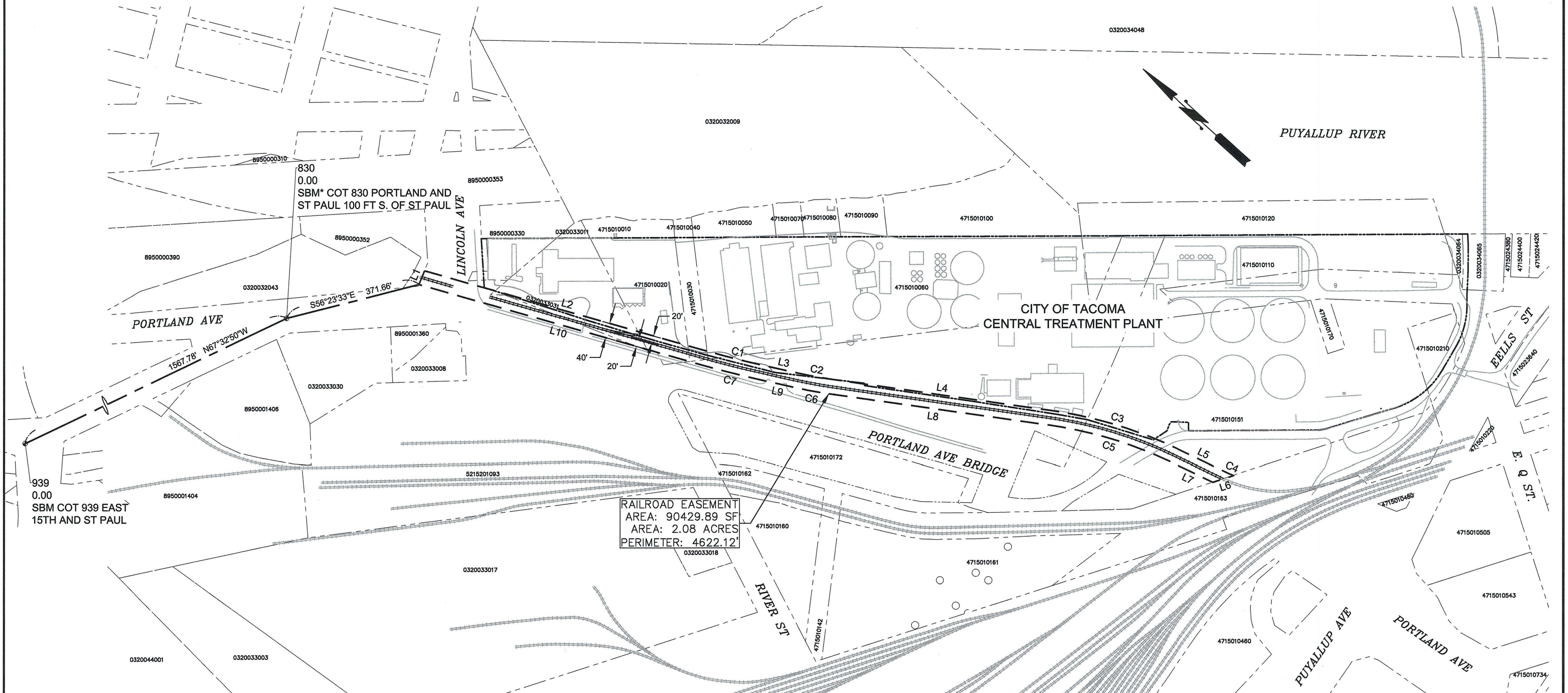
PJB FILE: 0314561

CADD FILENAME	0314561
------------------	---------

SCAN FILENAME	WAV2002-314561.TIF
------------------	--------------------

A PORTION OF SE 1/4 & SW 1/4, SEC. 03, TWP. 20N, RGE. 3E, W.M.

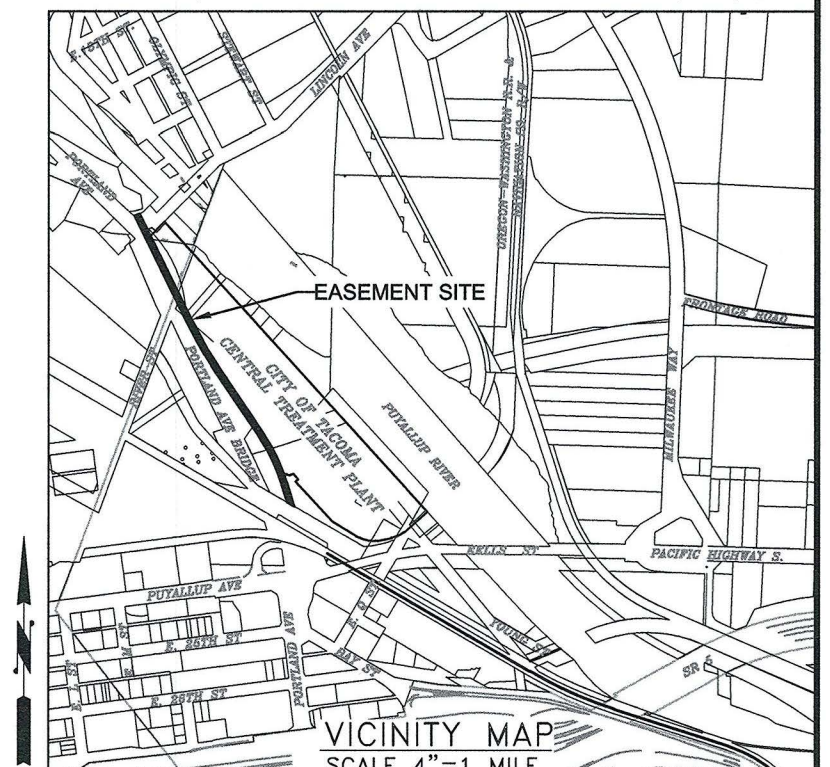
DATE: 3/12/2020 1:40 PM PATH: P:\ENVSERVICES\PROJECTS\ICTP\ELECTRICAL DISTRIBUTION SYSTEM\EASEMENT LEGAL LAYOUT: ESMT-EXHIBIT



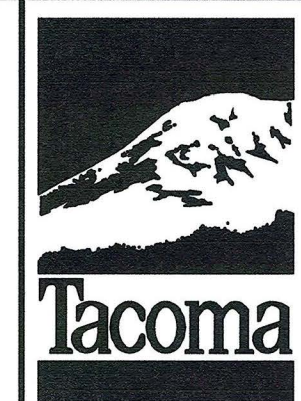
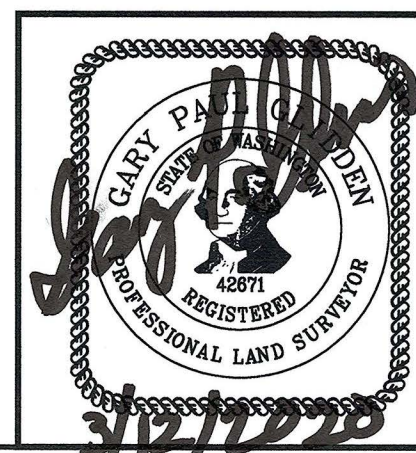
RAILROAD EASEMENT
 AREA: 90429.89 SF
 AREA: 2.08 ACRES
 PERIMETER: 4622.12'

LINE TABLE		
LINE NO.	LENGTH	DIRECTION
L1	40.28'	N70°37'57"E
L2	798.11'	S26°09'38"E
L3	95.92'	S29°30'58"E
L4	604.72'	S33°59'43"E
L5	148.16'	S16°27'42"E
L6	59.70'	N59°46'02"W
L7	130.02'	N16°27'42"W
L8	604.72'	N33°59'43"W
L9	95.92'	N29°30'58"W
L10	802.88'	N26°09'38"W

CURVE TABLE			
CURVE NO.	LENGTH	RADIUS	DELTA
C1	166.61'	2844.93'	3°21'19"
C2	88.05'	1126.28'	4°28'45"
C3	356.90'	1166.28'	17°32'01"
C4	25.32'	339.26'	4°16'35"
C5	344.66'	1126.28'	17°32'01"
C6	91.18'	1166.28'	4°28'45"
C7	168.95'	2884.93'	3°21'19"



BASIS OF BEARING:
 CITY OF TACOMA GRID / NAD 83-91, WASHINGTON STATE PLANE COORDINATES SOUTH ZONE
 CITY OF TACOMA PUBLISHED COORDINATES:
 #939) SURFACE BRASS MONUMENT AT EAST 15TH AND ST PAUL;
 NORTHING 705296.49 EASTING 1162924.10
 #830) SURFACE BRASS MONUMENT PORTLAND AVENUE AND ST PAUL 100 FEET SOUTH OF ST PAUL
 NORTHING 704697.72 EASTING 1164373.03



**CITY OF TACOMA
 UPRR RAILROAD COMPANY
 RELEASE OF EASEMENT AREA
 EXHIBIT**

DRAWN: MEM	DATE: MARCH 12, 2020	JOB NO.: ENV-04015-13-01
CHKD. BY: GPG	SCALE: 1" = 200'	SHEET: 1 OF 2