

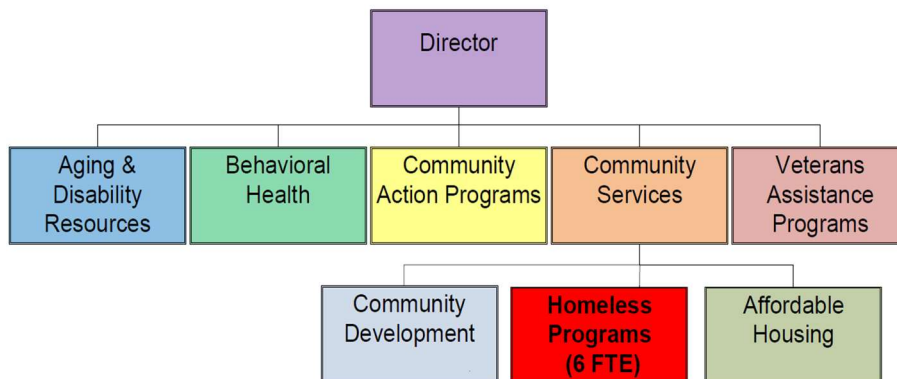
JOINT CITY/COUNTY COUNCIL MEETING ON HOMELESSNESS

Homeless Services Overview

Heather Moss, Director of Human Services
Heather.Moss@piercecountywa.gov

1

Organizational Chart



2

2

Comprehensive Plan to End Homelessness (CPEH)



- Workgroup formed by PCHS in 2020 to consider options to end street homelessness
- Workgroup formalized by Council as an Ad Hoc Committee in March 2021 to help write the Comprehensive Plan to End Homelessness (CPEH)
- CPEH adopted by Council in March 2022
- Steering committee memorialized as Implementation Advisory Board (IAB)

3

3

Goals of the CPEH



1. Create a unified, regional system and response
2. Use DATA to ensure interventions are effective for all
3. Prevent homelessness
4. Ensure adjacent programs meet needs of homeless population
5. Meet immediate needs of those experiencing homelessness
6. Expand permanent housing

4

4

Budget by Fund Source

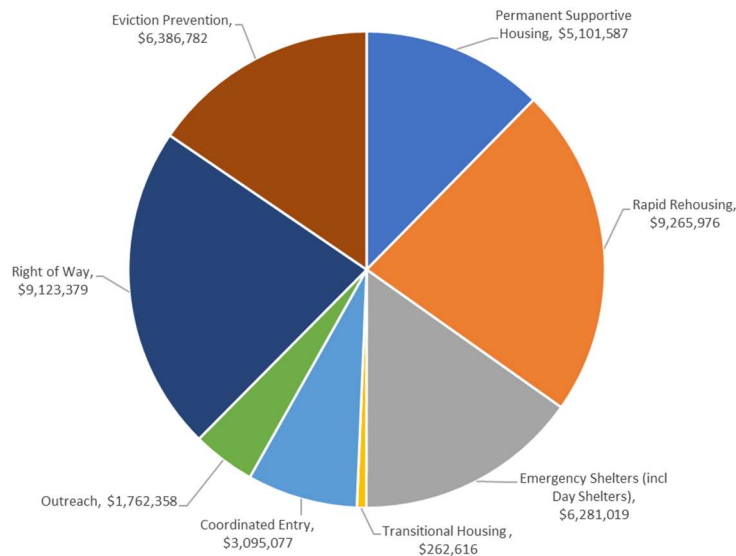


Funding Source	Total Funding 2022-2023	Total Funding 2023-2024
American Rescue Plan (ARPA)	\$8,949,000	
Homeless Housing Project (HHP) <i>*Funded by HUD, Commerce, THA and local DRF</i>	\$16,267,671	\$21,984,235
Continuum of Care (CoC)	\$3,594,446	\$3,784,398
Eviction Prevention (EP)	\$6,167,888	\$6,386,782
Right of Way Funding (ROW)	\$12,866,629	\$9,123,379
	\$47,845,634	\$41,278,794



5

2023-2024 Funding by Intervention



6

Social Change Partners

Unified Regional Approach (URA) Recommendations

By July 1, 2023, create a Tacoma-Pierce Unified Regional Office of Homelessness, consisting of the right stakeholders with central decision-making authority of funding and services.

7

7

Social Change Partners Recommendations

Unified Regional Approach – Strategy 1.1

1. Invest in building additional capacity in existing structures.
2. Establish an MOU with specific, time-limited objectives and commitments.
3. Establish an interlocal agreement under RCW 39.34.030.

8

8

Characteristics of a Successful Unified Approach



We want to create a unified approach to homelessness that:

- Is flexible to needs of community and jurisdictional priorities
- Creates a formal space for collaboration among communities that balances coordination with jurisdictional autonomy
- Includes community voice (clients, partners, citizens)
- Offers a common source of data covering entire system
- Establishes a single POC at high level within PCHS

9

9



Questions?

Heather Moss, Director of Human Services
Heather.Moss@piercecountywa.gov

10

10