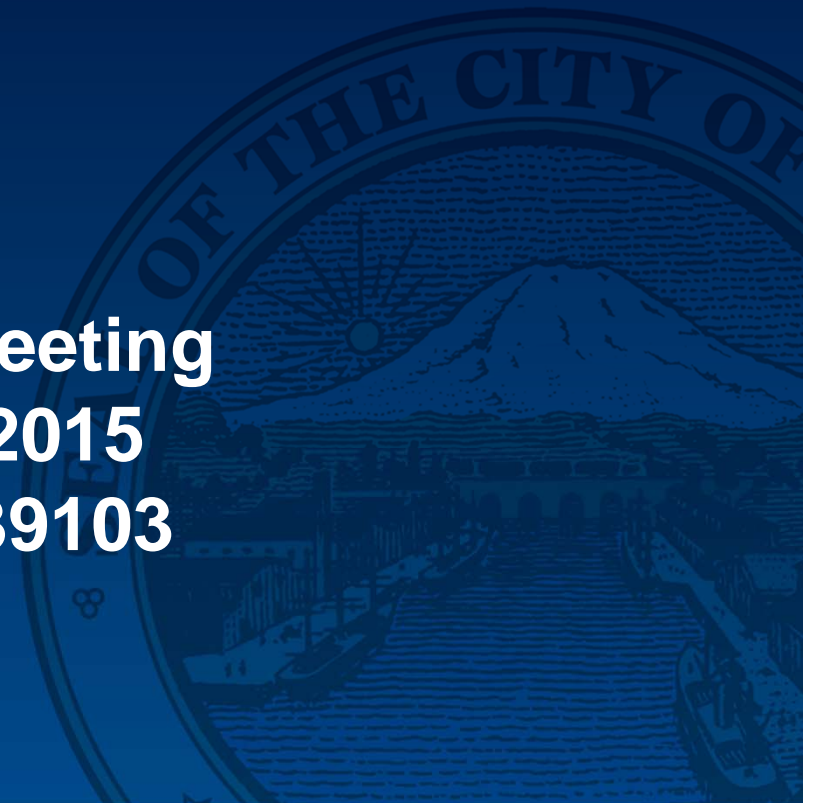


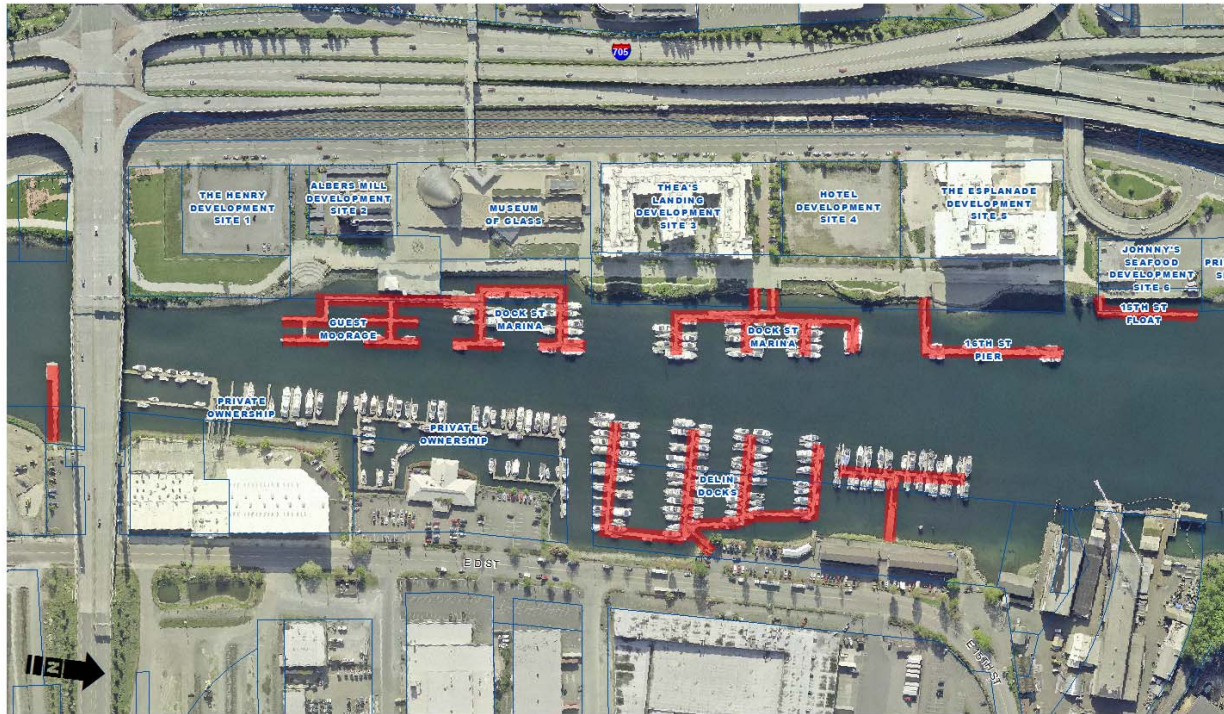
# **Amendment to Foss Waterway Management LLC Marina Lease**

City of Tacoma  
Community and Economic Development  
Department


**City Council Meeting  
January 27, 2015  
Resolution #39103**



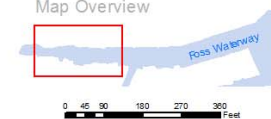
# Marina Lease Areas



**Marina Lease Areas**  
Foss Waterway Management, LLC

-  Lease Areas
-  Parcels

Map Overview



File: \\Geobase-wm\CED\GA D\IR2015\IR048\F oss2PPT\_LeaseAreas.mxd

# Key Elements - Lease Amendment

- **Tenant Assumes all Maintenance costs and Repairs**
- **Tenant Assumes all Capital Replacement of Revenue Producing Marinas**
- **Annual Reports on Investment in Marina Maintenance Required**
- **Tenant Option to Extend Lease Term**

# Key elements – Development Contribution Agreement

Distribution of \$1,500,000 Development Contribution

- \$1,000,000 to FWDA General Fund Loan
- \$500,000 to Dedicated Fund for Park Maintenance

# Public Presentations and Recommendation

- FWDA Board Presentation and Approval Nov. 19, 2014
- Economic Development Committee Presentation and Recommendation Nov. 25, 2014

# **Amendment to Foss Waterway Management LLC Marina Lease**

City of Tacoma  
Community and Economic Development  
Department

**City Council Meeting  
January 27, 2015  
Resolution #39103**

The background of the slide features a large, faint, circular seal of the City of Tacoma. The seal depicts a harbor scene with a mountain in the background, a sun or moon in the sky, and several boats in the water. The text "CITY OF TACOMA" is visible around the top edge of the seal.