
JULY

TACOMA RAIL

2017

**FINANCIAL
REPORT**



Public Utility Board

MONIQUE TRUDNOWSKI
Chair

WOODROW JONES
Vice-Chair

KAREN LARKIN
Secretary

BRYAN FLINT
Member

MARK PATTERSON
Member

WILLIAM A. GAINES
Director of Utilities/CEO

DALE KING
Rail Superintendent

ANDREW CHERULLO
Finance Director

DEPARTMENT OF PUBLIC UTILITIES

CITY OF TACOMA

This page has been left blank intentionally.

CITY OF TACOMA, WASHINGTON
DEPARTMENT OF PUBLIC UTILITIES, BELT LINE DIVISION
Doing Business As

TACOMA RAIL

TABLE OF CONTENTS

Note: These financial statements are interim, unaudited reports prepared primarily for the use of management. Not all transactions reported in these statements have been recorded on the full accrual basis of accounting or in accordance with generally accepted accounting principles.

STATEMENTS OF NET POSITION	1 - 2
STATEMENTS OF REVENUES, EXPENSES AND CHANGES IN NET POSITION	3 - 4
SUMMARY OF SWITCHING REVENUES AND SWITCHING ACTIVITIES	5 - 6
SUPPLEMENTAL DATA	7 - 11

STATEMENTS OF FINANCIAL POSITION AND CHANGES IN NET POSITION

CITY OF TACOMA, WASHINGTON
DEPARTMENT OF PUBLIC UTILITIES
TACOMA RAIL

STATEMENTS OF NET POSITION

ASSETS	JULY 31,	
	2017	2016
CAPITAL ASSETS		
Road and Equipment Property	\$44,810,611	\$41,312,879
Less Accumulated Depreciation	(19,801,835)	(18,234,236)
Total	25,008,776	23,078,643
Construction Work in Progress	2,873,035	1,951,447
Net Capital Assets	27,881,811	25,030,090
SPECIAL FUNDS		
Cash and Equity in Pooled Investments:		
Debt Service Funds	-	21,701
Total Special Funds	-	21,701
CURRENT ASSETS		
Cash & Equity in Pooled Investments	11,002,128	11,390,660
Customer Accounts Receivable	2,722,190	3,262,897
Prepayments	1,551,546	1,667,544
Materials and Supplies Inventory.....	1,042,055	989,769
Total Current Assets	16,317,919	17,310,870
TOTAL ASSETS	\$44,199,730	\$42,362,661

These statements should be read in conjunction with the Notes to Financial Statements contained in the 2016 Annual Report.

NET POSITION AND LIABILITIES	<u>JULY 31,</u> 2017	<u>JULY 31,</u> 2016
NET POSITION		
Net Investment in Capital Assets.....	\$21,600,630	\$18,412,716
Restricted for:		
Debt Service	-	21,701
Unrestricted	8,688,338	9,833,254
TOTAL NET POSITION	<u>30,288,968</u>	<u>28,267,671</u>
LONG-TERM DEBT, NET OF CURRENT MATURITIES		
2006 Senior Lien Revenue Bond	-	255,008
State Loans.....	5,471,877	5,583,372
Total Long-Term Liabilities	<u>5,471,877</u>	<u>5,838,380</u>
CURRENT LIABILITIES		
Accounts Payable	2,954,234	532,584
Wages Payable	262,273	212,363
Unemployment and other Tax Payables	269,454	282,954
Volume Incentive Payable	1	2,708,334
Current Portion of Long Term Debt	809,304	778,996
Interest Payable	-	3,417
Current Portion of Compensated Absences	111,516	113,117
Total Current Liabilities	<u>4,406,782</u>	<u>4,631,765</u>
LONG-TERM LIABILITIES		
On the Job Injury Reserve	787,536	730,432
Long Term Portion of Compensated Absences	1,003,644	1,018,056
Other Long-Term Liabilities	2,240,923	1,876,357
Total Long-Term Liabilities	<u>4,032,103</u>	<u>3,624,845</u>
TOTAL LIABILITIES	<u>13,910,762</u>	<u>14,094,990</u>
TOTAL NET POSITION AND LIABILITIES	<u>\$44,199,730</u>	<u>\$42,362,661</u>

CITY OF TACOMA, WASHINGTON
DEPARTMENT OF PUBLIC UTILITIES
TACOMA RAIL

STATEMENTS OF REVENUE, EXPENSES AND CHANGES IN NET POSITION

	JULY 2017	JULY 2016
OPERATING REVENUES		
Switching Revenues	\$2,105,081	\$2,356,748
Demurrage and Other Operating Revenues	292,074	313,549
Total Operating Revenues	2,397,155	2,670,297
OPERATING EXPENSES		
Maintenance of Way and Structures		
Salaries and Wages	66,247	98,683
Supplies and Expense	73,211	134,715
Mechanical		
Salaries and Wages	156,697	176,671
Supplies and Expense	304,235	253,845
Operations		
Salaries and Wages	781,159	873,673
Supplies and Expense	105,901	169,202
Administration		
Salaries and Wages	201,275	246,170
Supplies and Expense	218,759	401,134
Taxes - State	38,012	39,095
Depreciation	136,277	122,577
Total Operating Expenses	2,081,773	2,515,765
Net Operating Income	315,382	154,532
NON-OPERATING REVENUES (EXPENSES)		
Interest Income	10,012	9,376
Miscellaneous	83,499	91,201
Interest Expense	-	(3,417)
Total Non-Operating Revenues	93,511	97,160
Contributions - Grants	-	-
Total Contributions	-	-
Transfers		
City of Tacoma Gross Earnings Tax	(223,186)	(232,586)
CHANGE IN NET POSITION	\$185,707	\$19,106
TOTAL NET POSITION - JANUARY 1		
TOTAL NET POSITION - JULY 31		

These statements should be read in conjunction with the Management Discussion and Analysis in the June 2017 Financial Report.

YEAR TO DATE			
JULY 31, 2017	JULY 31, 2016	2017/2016 VARIANCE	PERCENT CHANGE
\$16,285,895	\$15,863,833	\$422,062	2.7%
2,327,946	2,031,275	296,671	14.6%
<u>18,613,841</u>	<u>17,895,108</u>	<u>718,733</u>	<u>4.0%</u>
565,996	605,167	(39,171)	-6.5%
607,493	1,073,328	(465,835)	-43.4%
1,149,971	1,178,850	(28,879)	-2.4%
1,877,904	1,533,189	344,715	22.5%
5,901,667	5,450,532	451,135	8.3%
968,676	816,204	152,472	18.7%
1,389,943	1,400,609	(10,666)	-0.8%
2,842,311	2,840,988	1,323	0.0%
265,959	254,660	11,299	4.4%
954,542	859,899	94,643	11.0%
<u>16,524,462</u>	<u>16,013,426</u>	<u>511,036</u>	<u>3.2%</u>
2,089,379	1,881,682	207,697	11.0%
79,699	76,020	3,679	4.8%
610,989	775,187	(164,198)	-21.2%
(6)	(9,373)	9,367	-99.9%
<u>690,682</u>	<u>841,834</u>	<u>(151,152)</u>	<u>-18.0%</u>
36,254	-	36,254	100.0%
<u>36,254</u>	<u>-</u>	<u>36,254</u>	<u>100.0%</u>
(1,561,245)	(1,497,506)	(63,739)	4.3%
1,255,070	1,226,010	\$29,060	2.4%
<u>29,033,898</u>	<u>27,041,661</u>		
<u>\$30,288,968</u>	<u>\$28,267,671</u>		

CITY OF TACOMA, WASHINGTON
DEPARTMENT OF PUBLIC UTILITIES
TACOMA RAIL

SUMMARY OF SWITCHING REVENUES AND SWITCHING ACTIVITIES
JULY 31, 2017 AND JULY 31, 2016

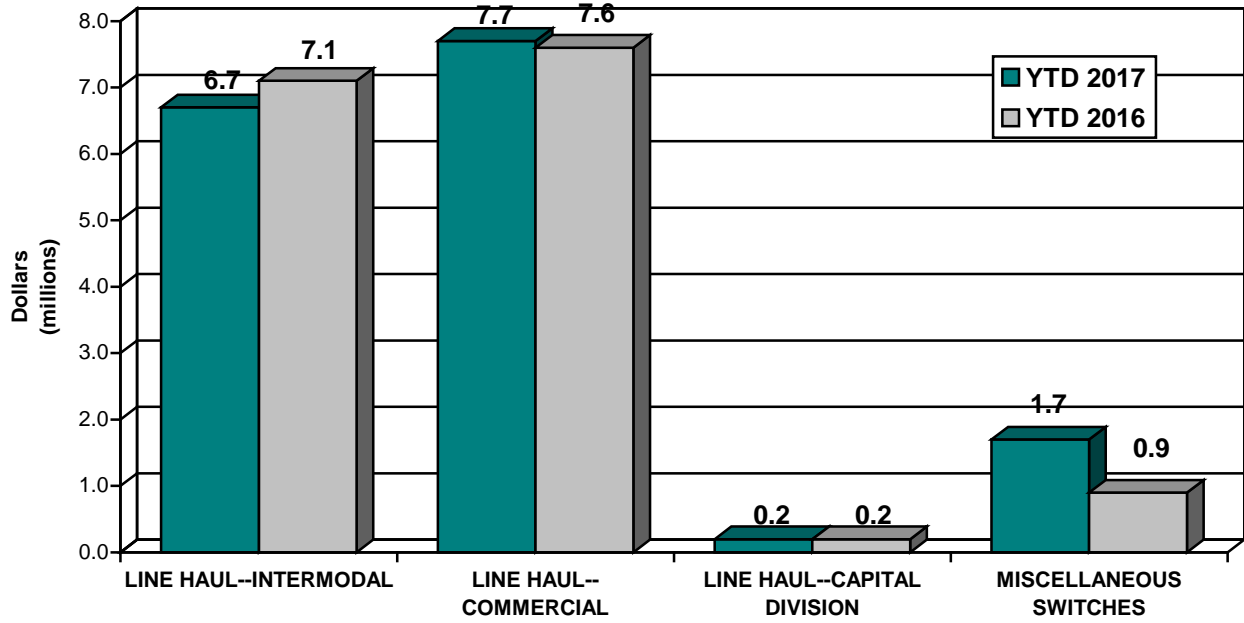
	<u>July 2017</u>	<u>July 2016</u>
SWITCHING REVENUES		
LINE HAULS--INTERMODAL	\$763,158	\$1,047,913
LINE HAULS--COMMERCIAL	1,023,775	1,162,000
LINE HAULS--CAPITAL DIVISION	21,703	23,395
MISCELLANEOUS SWITCHES	<u>296,445</u>	<u>123,440</u>
TOTAL SWITCHING REVENUES	<u><u>\$2,105,081</u></u>	<u><u>\$2,356,748</u></u>
 SWITCHING ACTIVITIES (CARS)		
LINE HAULS--INTERMODAL	4,392	6,174
LINE HAULS--COMMERCIAL	2,439	2,948
LINE HAULS--CAPITAL DIVISION	52	56
MISCELLANEOUS SWITCHES	<u>918</u>	<u>319</u>
TOTAL CARS SWITCHED	<u><u>7,801</u></u>	<u><u>9,497</u></u>

* The Summary of Switching Activites (Cars) includes an update to allocations for 2016.

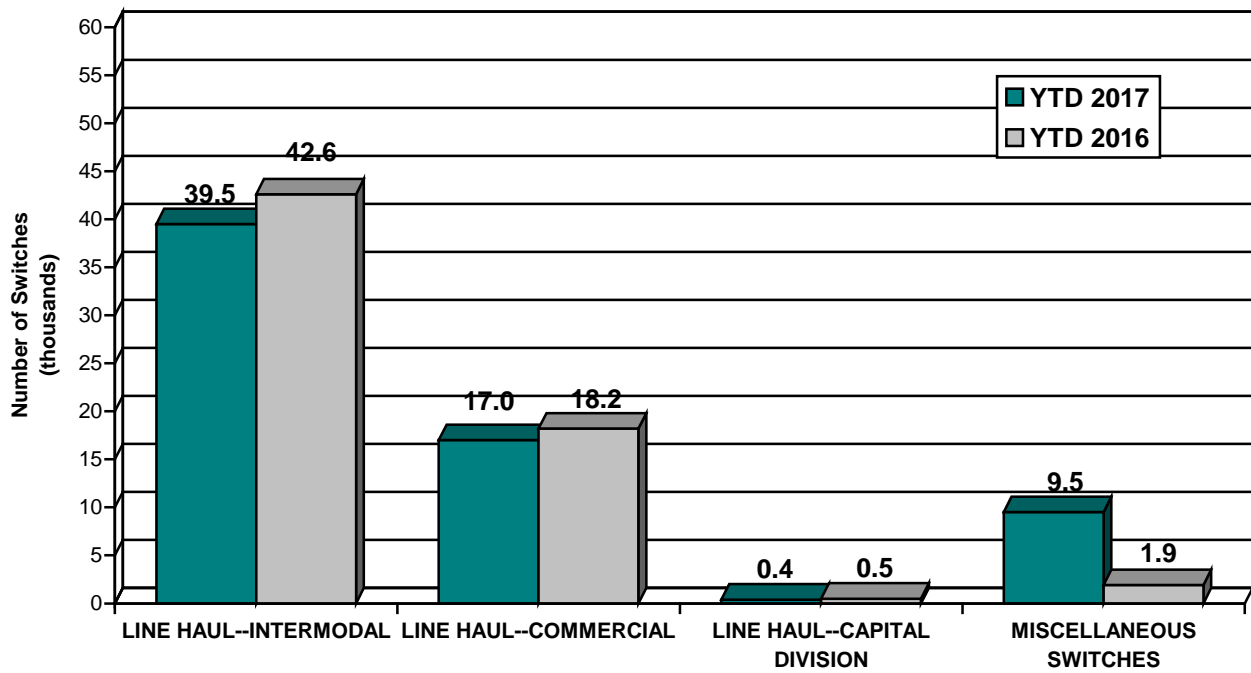
YEAR TO DATE			
July 31, 2017	July 31, 2016	2017/2016 VARIANCE	PERCENT CHANGE
\$6,726,555	\$7,112,024	(\$385,469)	-5.4%
7,698,145	7,629,945	68,200	0.9%
158,597	219,338	(60,741)	-27.7%
<u>1,702,598</u>	<u>902,526</u>	<u>800,072</u>	<u>88.6%</u>
<u>\$16,285,895</u>	<u>\$15,863,833</u>	<u>\$422,062</u>	<u>2.7%</u>
39,488	42,595	(3,107)	-7.3%
16,981	18,229	(1,248)	-6.8%
380	515	(135)	-26.2%
<u>9,483</u>	<u>1,875</u>	<u>7,608</u>	<u>405.8%</u>
<u>66,332</u>	<u>63,214</u>	<u>3,118</u>	<u>4.9%</u>

Supplemental Data

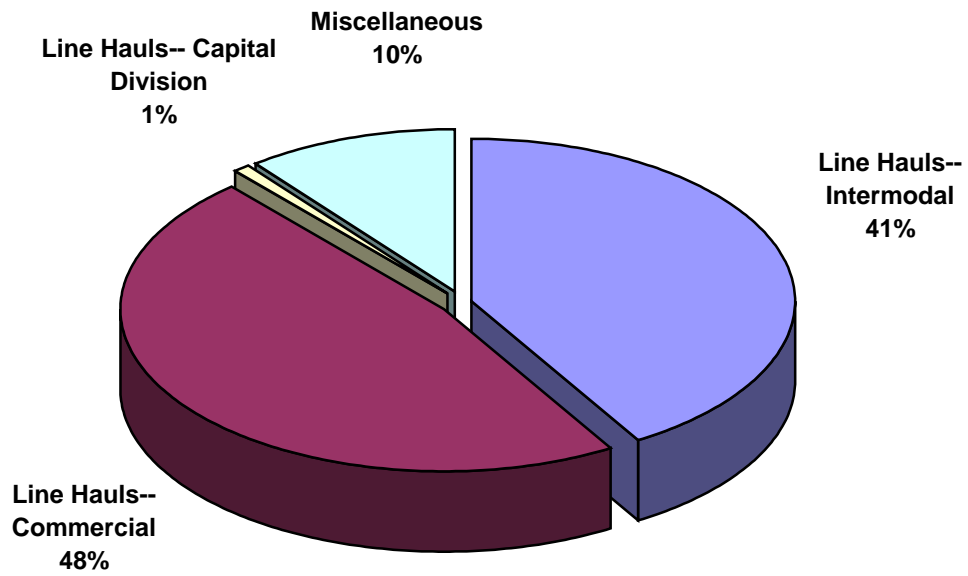
SWITCHING REVENUES
Year to Date - July 2017 & 2016



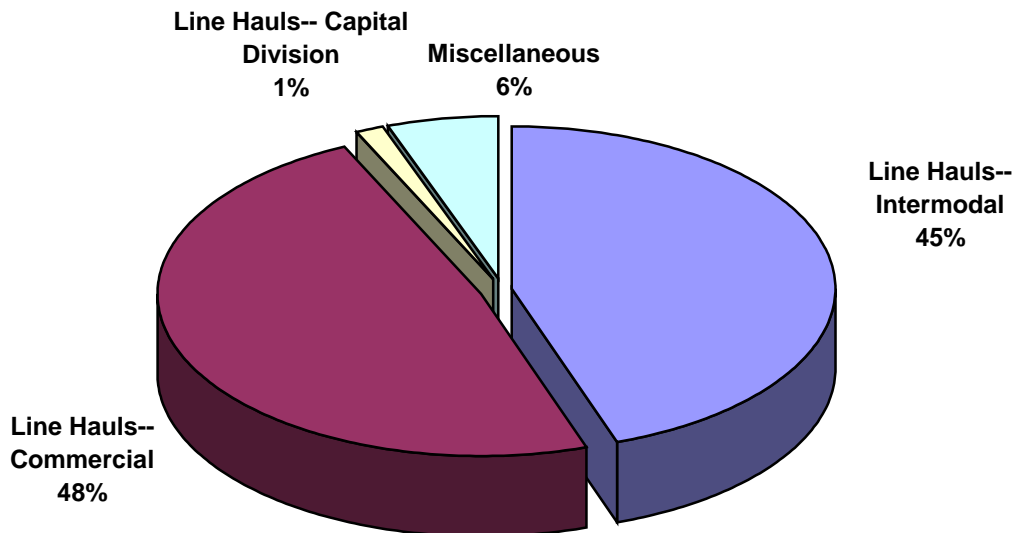
SWITCHING ACTIVITIES
Year to Date - July 2017 & 2016



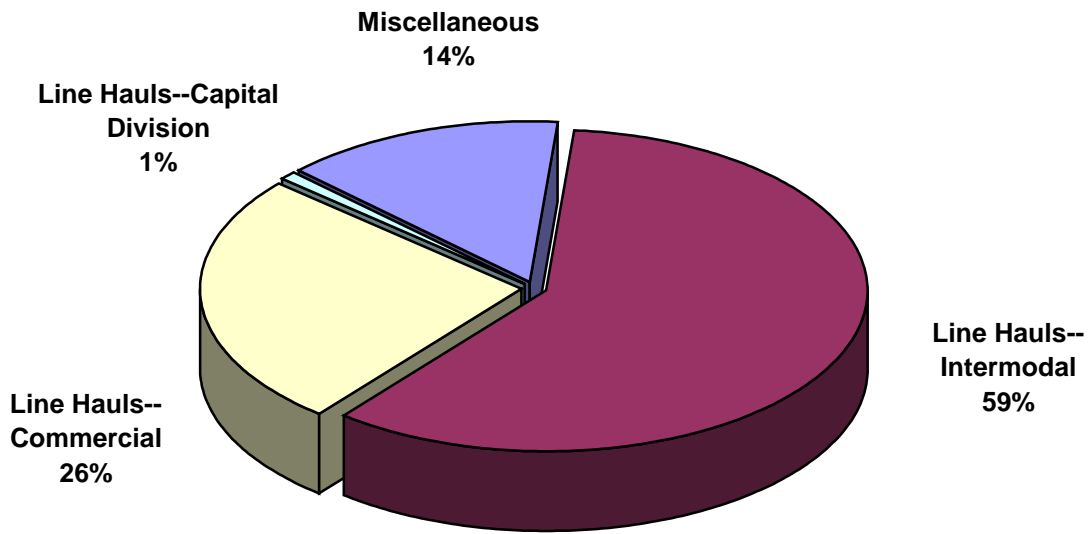
SWITCHING REVENUES
Year to Date - July 2017 (\$16,285,895)



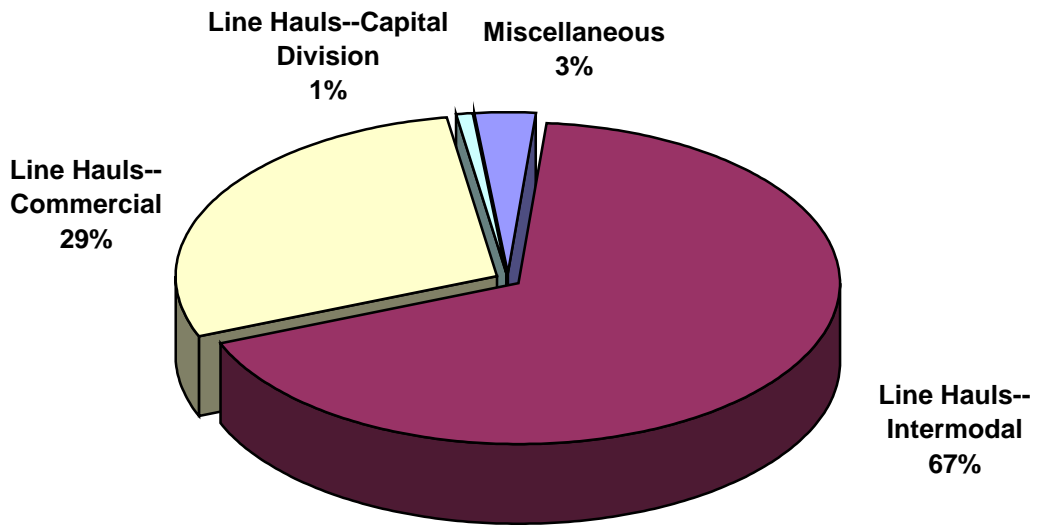
SWITCHING REVENUES
Year to Date - July 2016 (\$15,863,833)



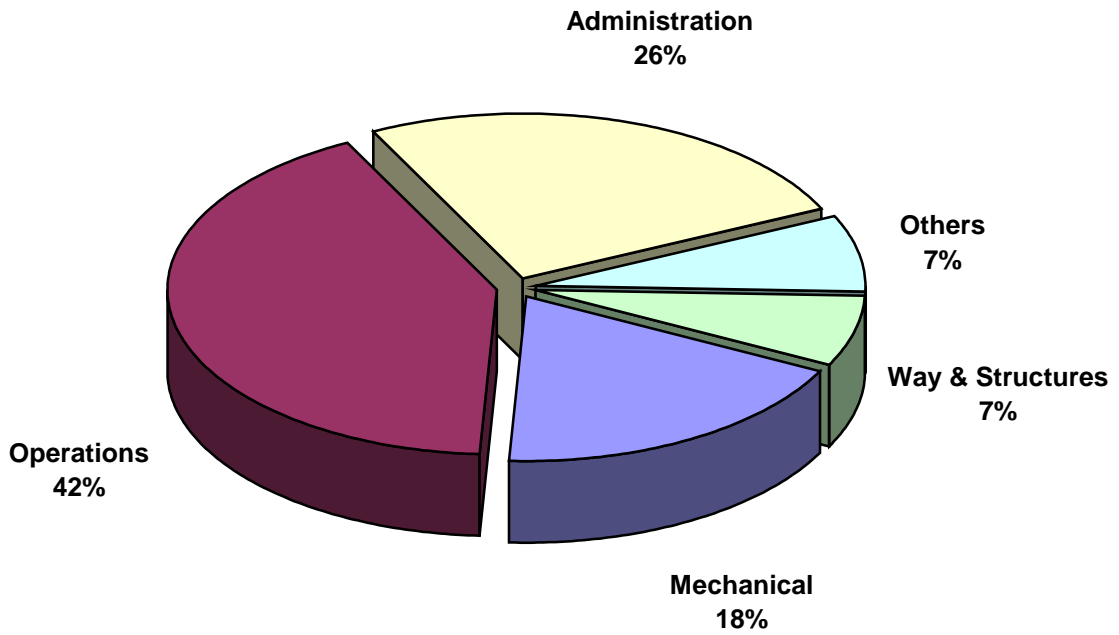
SWITCHING ACTIVITY
Year to Date - July 2017 (66,332 cars)



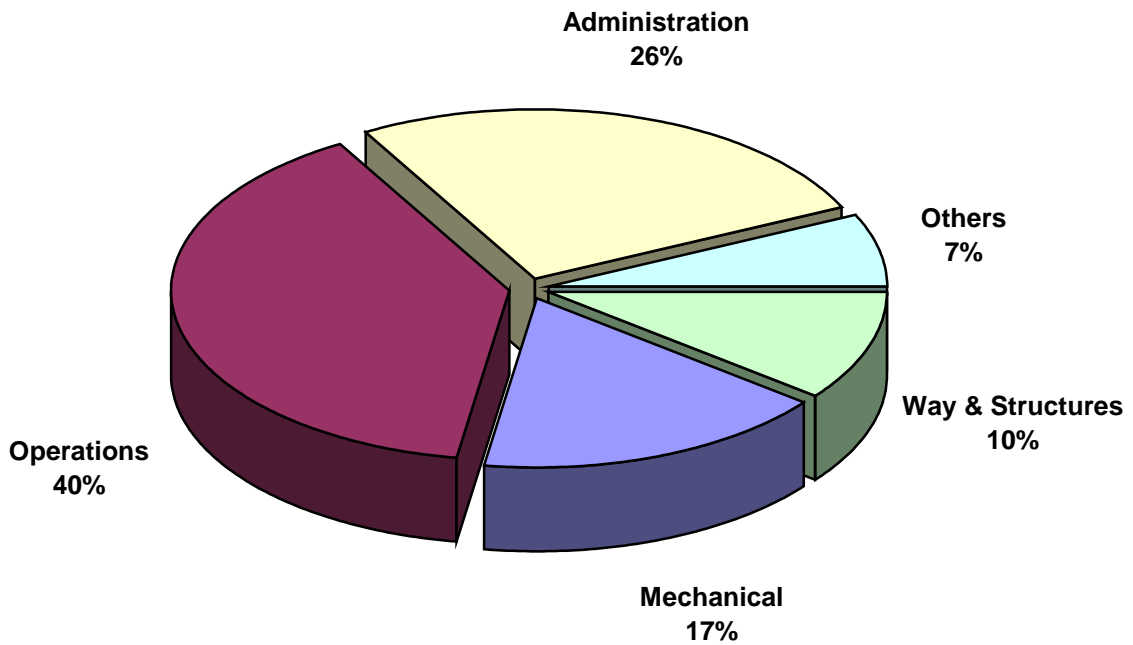
SWITCHING ACTIVITY
Year to Date - July 2016 (63,214 cars)



TOTAL OPERATING EXPENSES
Year to Date - July 2017 (\$16,524,462)



TOTAL OPERATING EXPENSES
Year to Date - July 2016 (\$16,013,426)





The City of Tacoma does not discriminate on the basis of disability in any of its programs, activities, or services. To request this information in an alternative format or to request a reasonable accommodation, please contact the City Clerk's Office at (253) 591-5505. TTY or speech to speech users please dial 711 to connect to Washington Relay Services.