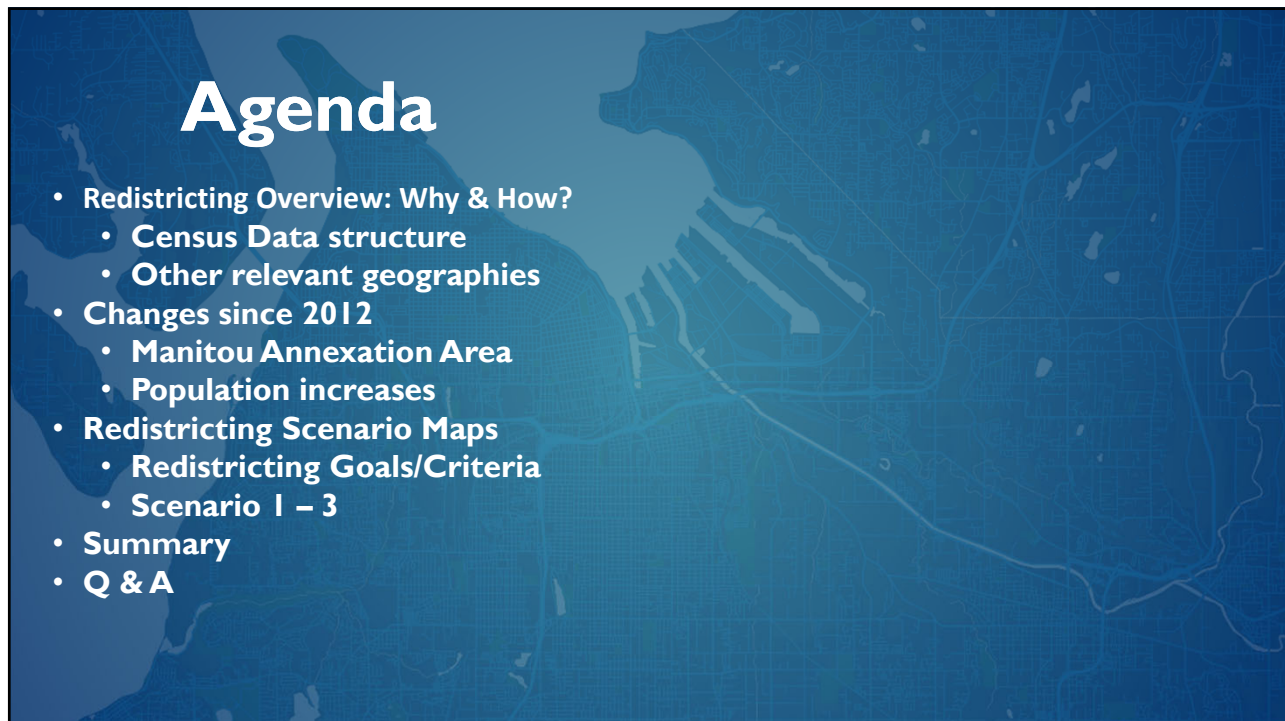




1



- Redistricting Overview: Why & How?
  - Census Data structure
  - Other relevant geographies
- Changes since 2012
  - Manitou Annexation Area
  - Population increases
- Redistricting Scenario Maps
  - Redistricting Goals/Criteria
  - Scenario 1 – 3
- Summary
- Q & A

2

# Objective

- Create a shared understanding of the redistricting process
- Present 3 redistricting scenarios
- Provide opportunity for feedback

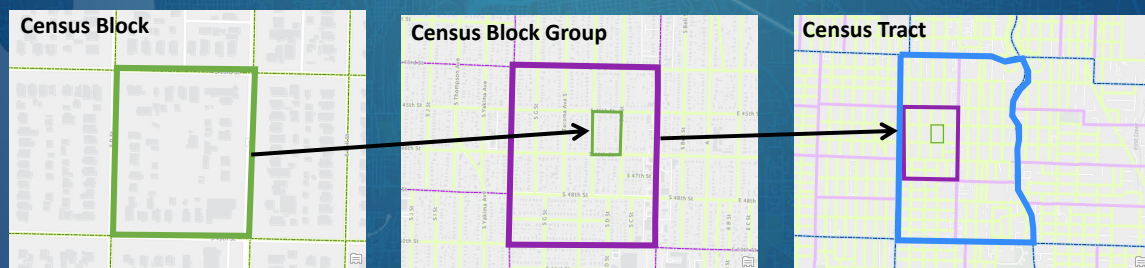
3

# Background

4

# How is the Census Data Organized?

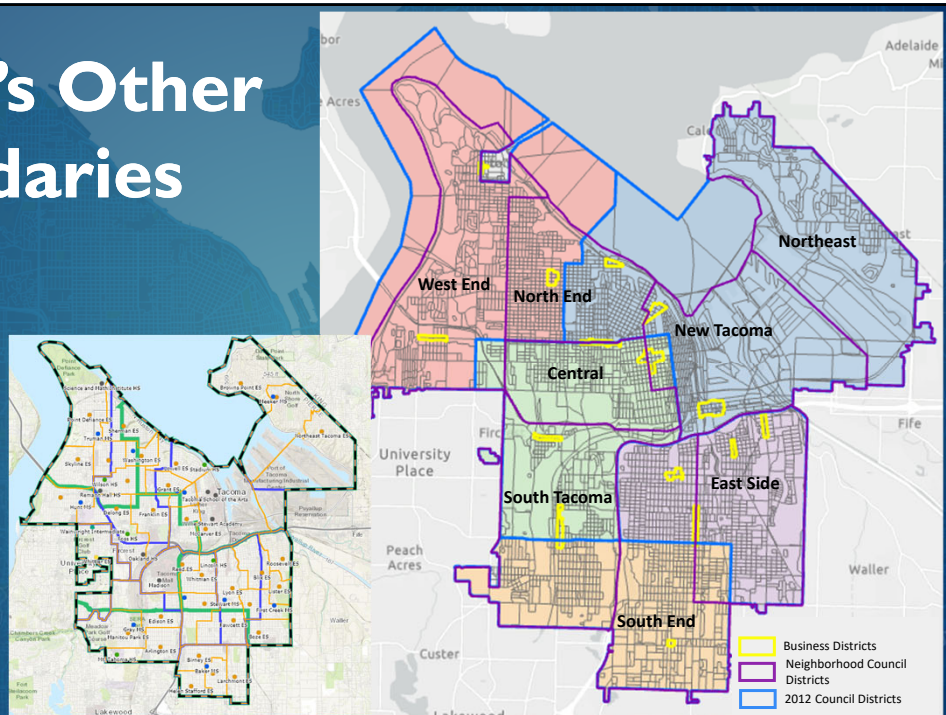
- **Census Blocks**
  - The smallest geographic area the Census uses
  - Typically bound by streets, railroads, or natural boundaries such as rivers.
  - Districts cannot cut blocks
- **Census Block Groups**
  - A combination of census blocks that is a subdivision of a census tract
  - Typically between 600-3,000 people
- **Census Tracts**
  - Largest of the geographic areas the Census collects data.
  - Typically have between 1,200 and 8,000 people.



5

# Tacoma's Other Boundaries

- **Neighborhood Council Districts**
- **Neighborhood Business Districts**
- **Schools**
  - Elementary, middle School, High School



6

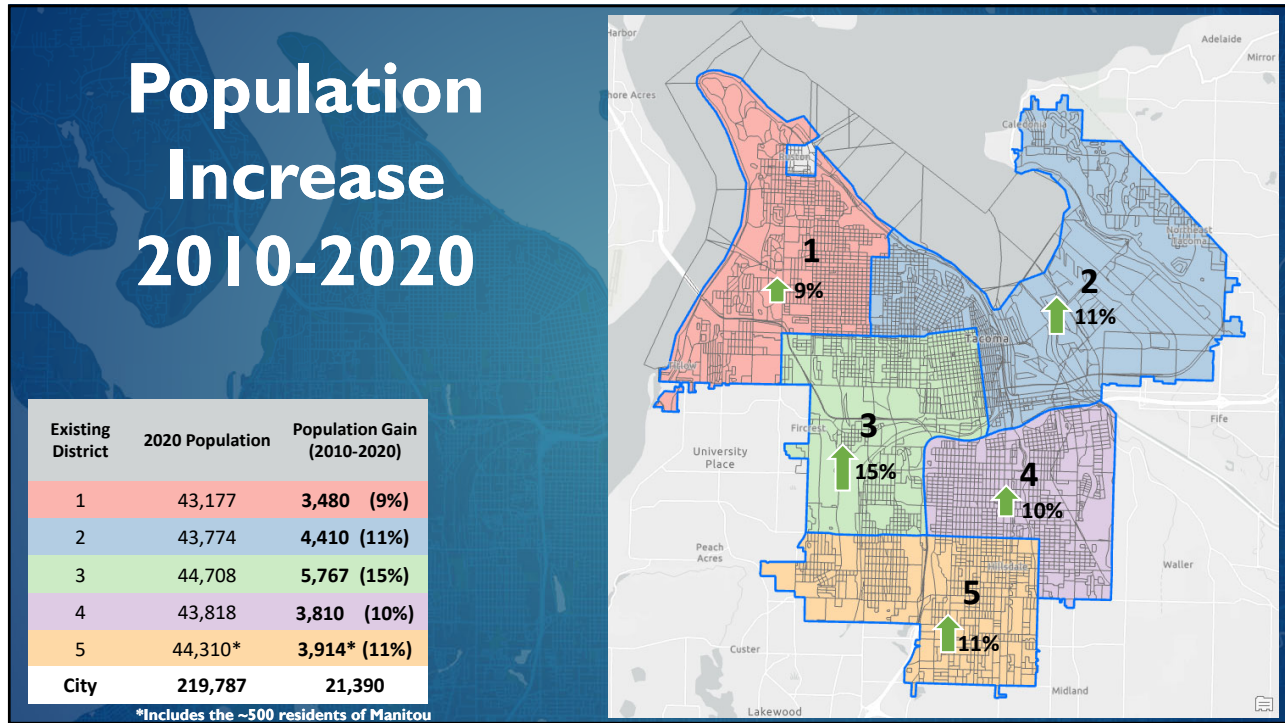


7

## Manitou Annexation Area

- Area planned for annexation in 2022
- Approximately 500 Residents
- Included in all summaries of this report as part of District 5

8



9

# The Redistricting Process

10

# What is Redistricting?

**Redistricting is the redrawing of electoral district boundaries to adjust for population growth.**

**Redistricting is required by federal law every 10 years, following completion of US Census (last redistricting was completed in 2012)**

11

# Redistricting Guidelines

**Updating voting districts based on population growth, as required by state and federal law**

**Follow the States Redistricting Plan ([RCW 44.05.090](#)) which specifies:**

- Equal population
- Compact, contiguous, convenient
- Minimize splitting political (city, county line etc.) and geographic boundaries
- Preserve communities of interest
- Prohibit undue favoritism to party or group
- Provide fair and effective representation

12

# Tacoma's Redistricting Criteria

A deviation of +/-500 ( Approximately 1% of each district) people from the target population is acceptable

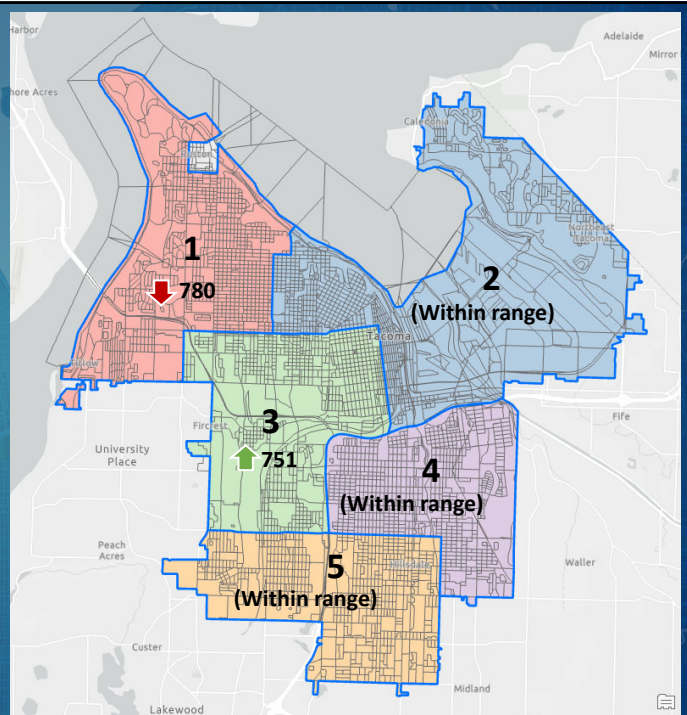
We want to maintain consistency between 2010 and 2020 where possible

13

## Target Populations for 2020

Existing District	2020 Population	Goal Population (2020 population / 5)	Deviation from Goal Population
1	43,177	43,957	780 Under Goal
2	43,774	43,957	-183
3	44,708	43,957	751 Over Goal
4	43,818	43,957	-139
5	44,310*	43,957	+353
<b>City</b>	<b>219,787</b>		

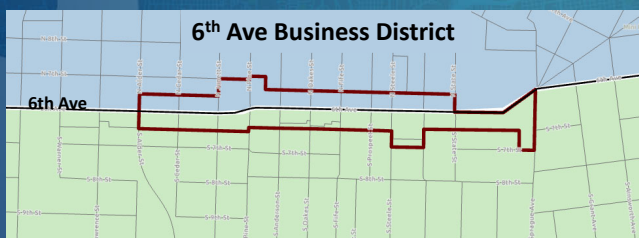
\* District 5 Includes the ~500 residents of Manitou



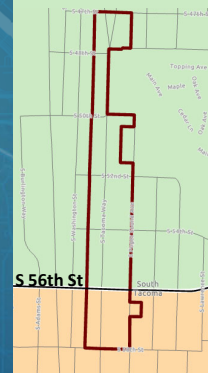
14

# Redistricting Considerations

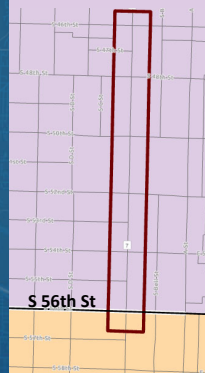
Census blocks follow street and especially arterial centerlines, this can result in splitting of business districts and other communities, which we try to avoid where possible



South Tacoma Business District



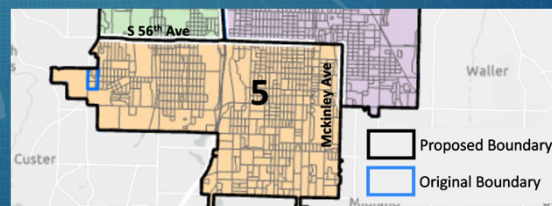
Pacific Business District



15

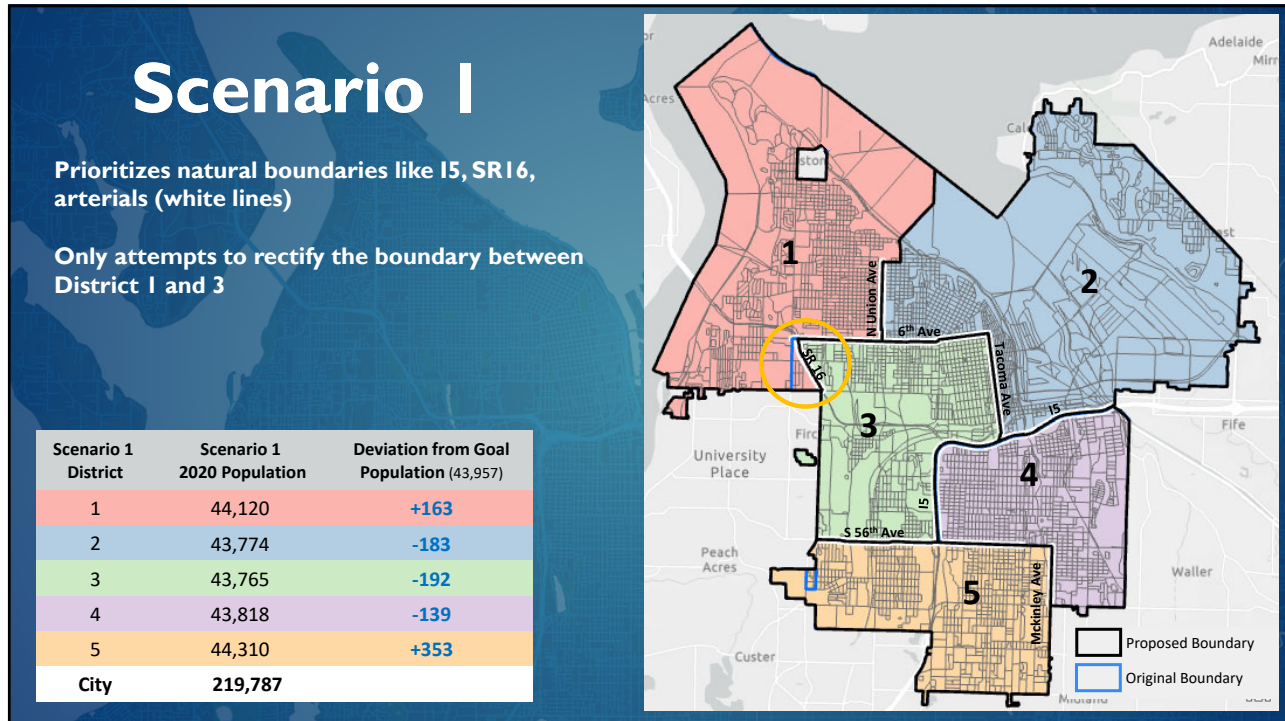
# Creating the Scenarios

- We created 3 scenarios that provide different options using existing boundaries to follow
  - The scenarios are presented in order of the least amount of change to the most amount of change
  - Each scenario has a guiding methodology used to dictate changes
- Three different scenarios is how redistricting was presented to Council in 2012

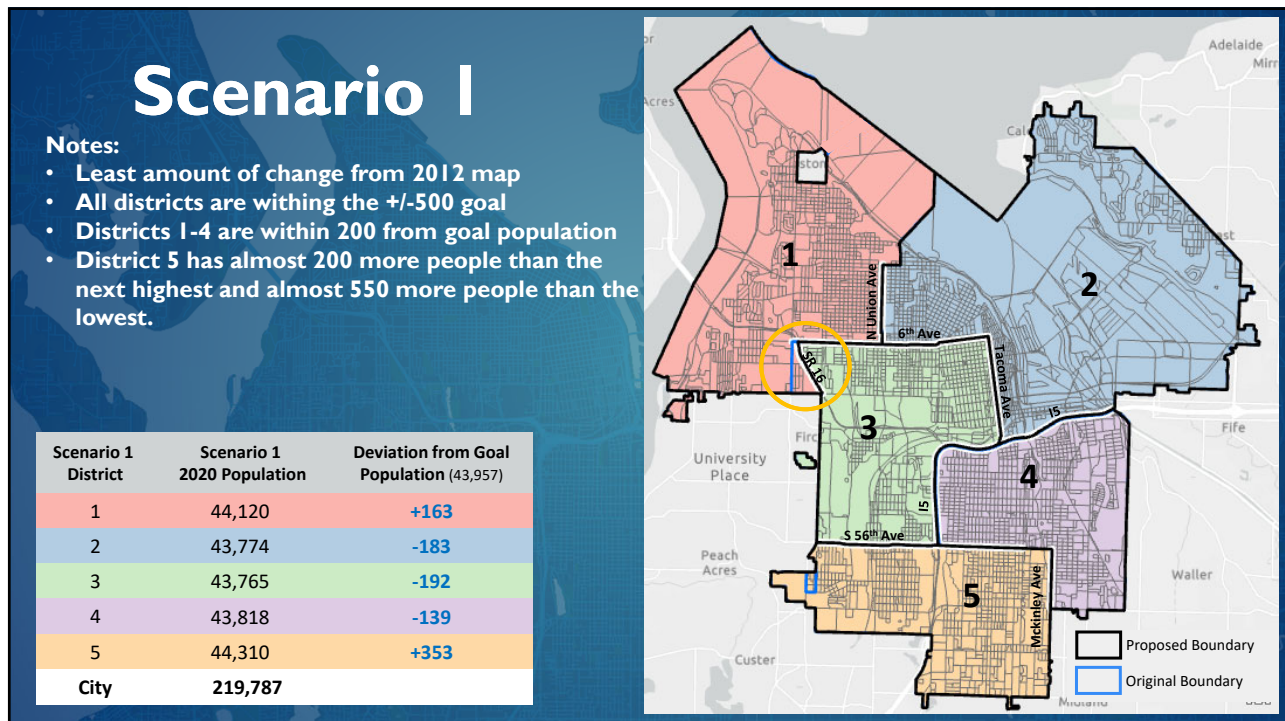


16

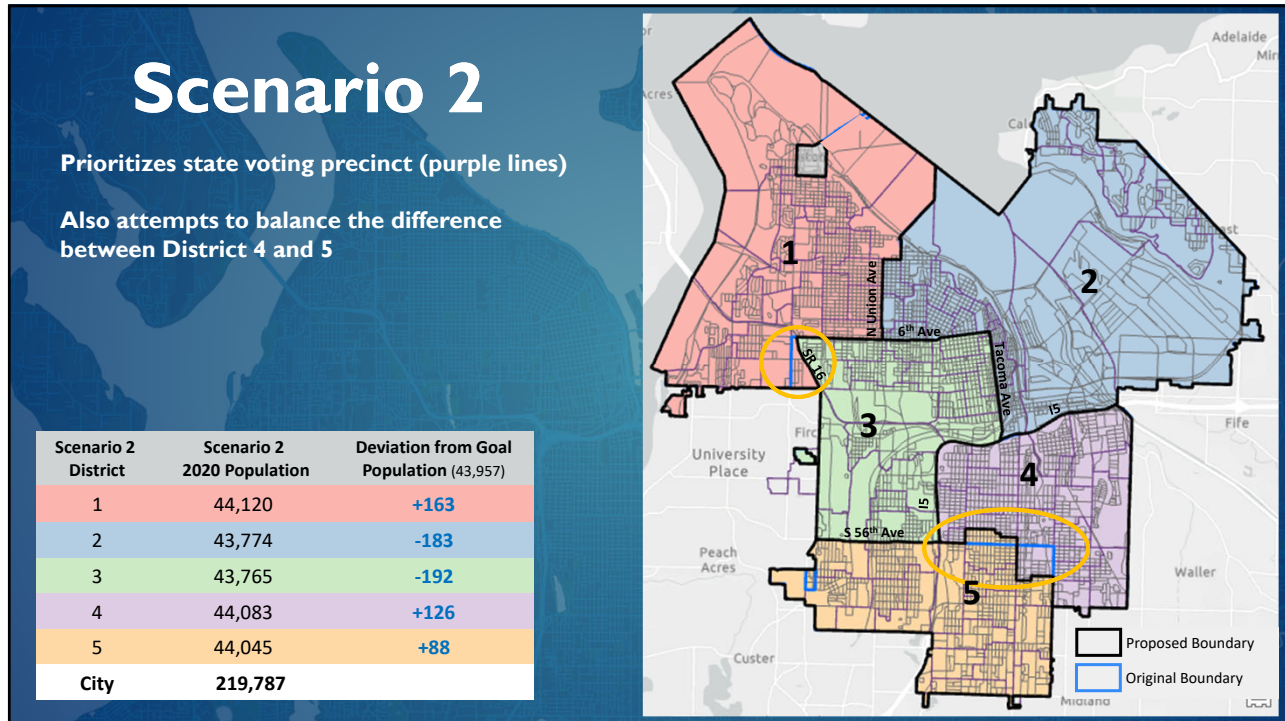




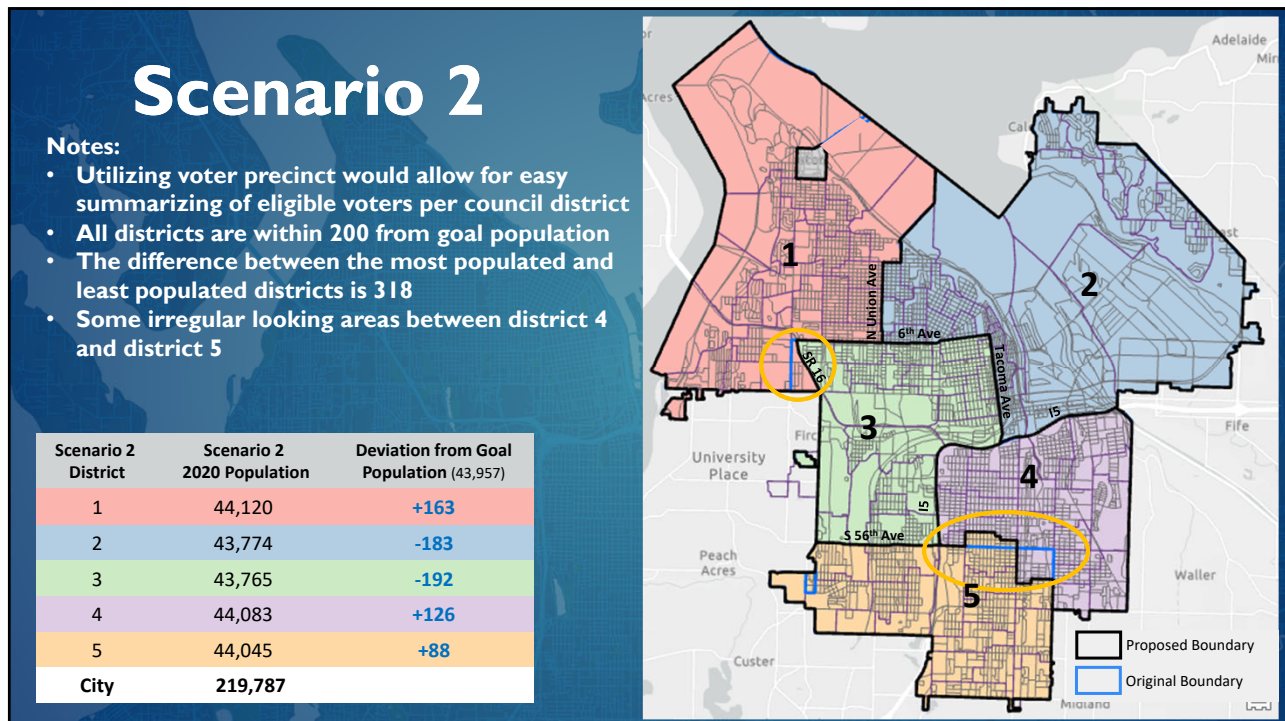
17



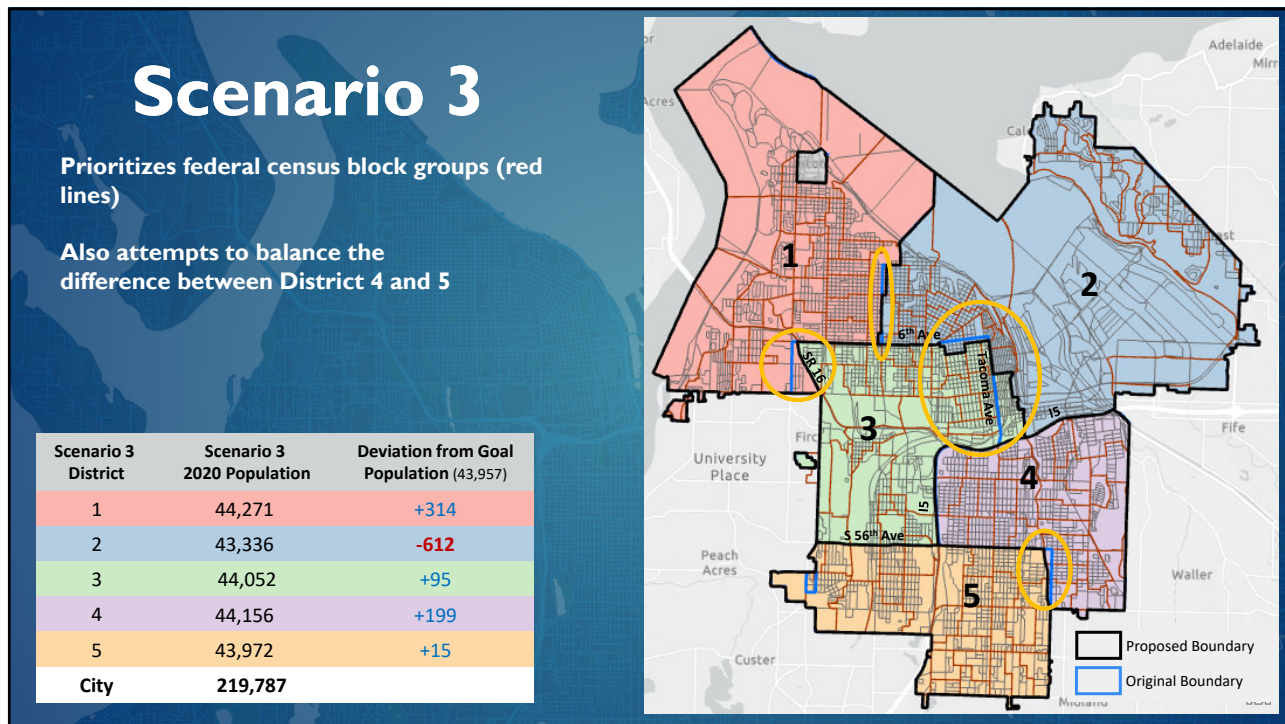
18



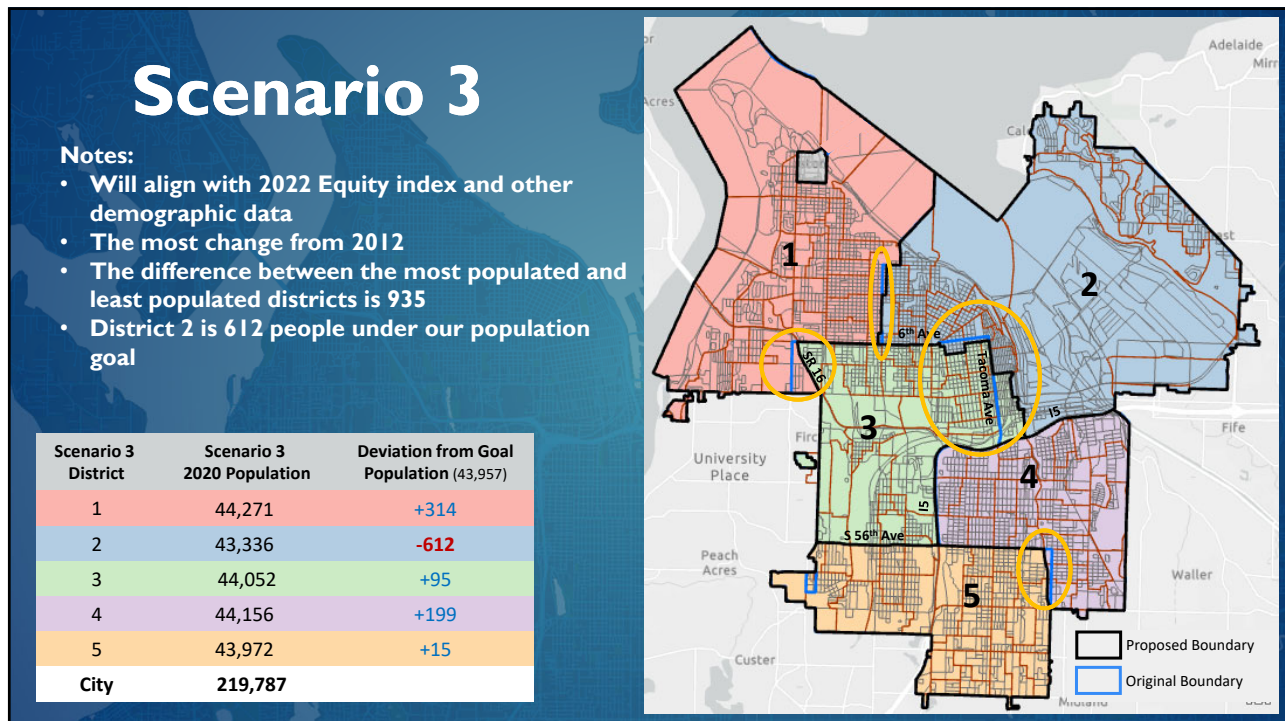
19



20

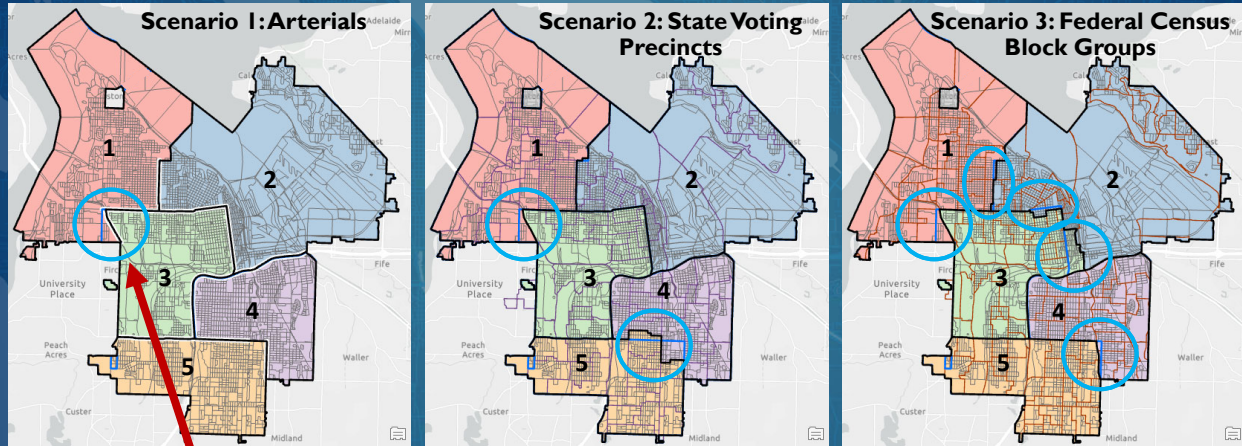


21



22

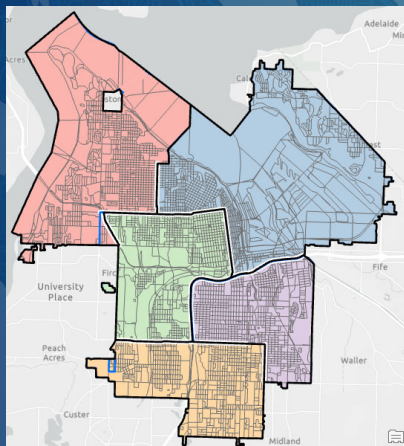
## Scenarios 1-3



- At a minimum, all scenarios change the boundary from Orchard to Highway 16, meeting the goal population for all districts.

23

## Summary



- Scenarios are based on a **systematic, quantitative process** to meet population goals
- No other considerations were made besides total population
- There is very limited room for additional adjustments
- Scenarios (once agreed upon) will be presented in Public Outreach

24

## Timeline

- **March** Community engagement/outreach planning.
- **April - May** District map proposals published for public viewing; community engagement begins.
- **June/July** Ongoing community engagement; proposal to be finalized based on City Council and community input. Final draft map selected by Council.
- **November 15** Pierce County Auditor deadline for final map

25

## Q & A

26