

# Comprehensive Plan to End Homelessness

**Heather Moss, Director**

**John Barbee, CSD Manager**  
Pierce County Human Services





# Process



## 18-member Steering Committee

- Providers
- Philanthropic
- Puyallup, Lakewood and City of Tacoma
- Puyallup Tribe
- Business
- Continuum of Care
- Coalition to End Homelessness
- People with Lived Experience
- Community Members
- Affordable Housing
- Faith Community



## 7 Subcommittees

- Targeted Universalism and Accountability
- Homeless Prevention
- Permanent Housing Interventions
- Temporary Housing and Navigation Interventions
- Medical and Behavioral Health Connections
- Funding Source Development
- Prioritization Approach



## Community Engagement

- Presentations to Community Groups
- On-line open house
- Meetings were open to the public

# Community Success

not only program focus



Functional Zero



Targeted Universalism



Collaboration



Shelter



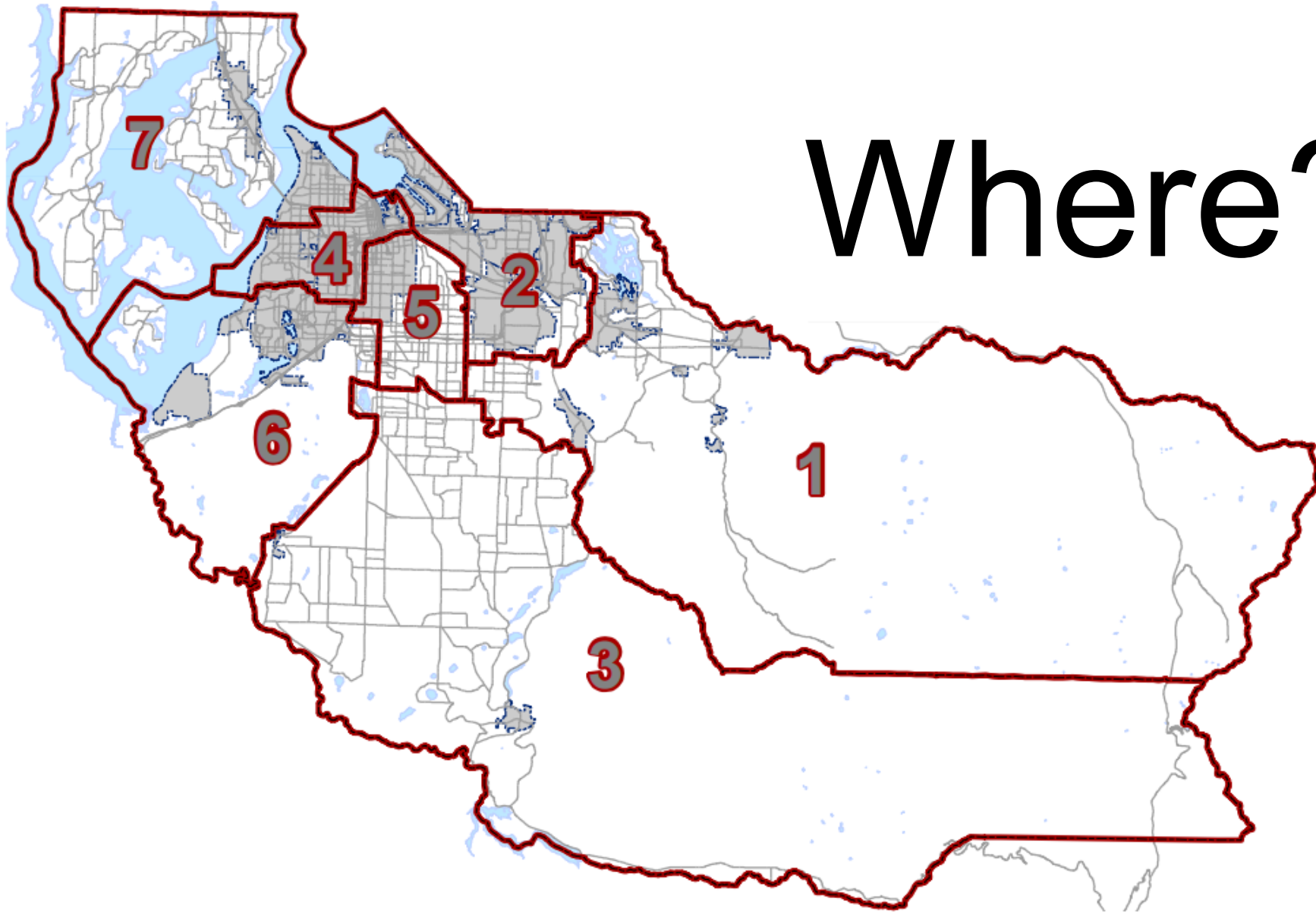
Funding

# Unsheltered Homeless Estimate

Clients Currently Homeless	3,300
Current Shelter beds	1,300
<b>Additional Shelter Beds Needed</b>	<b>2,000</b>



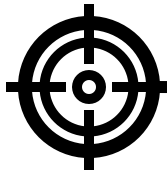
# Where?



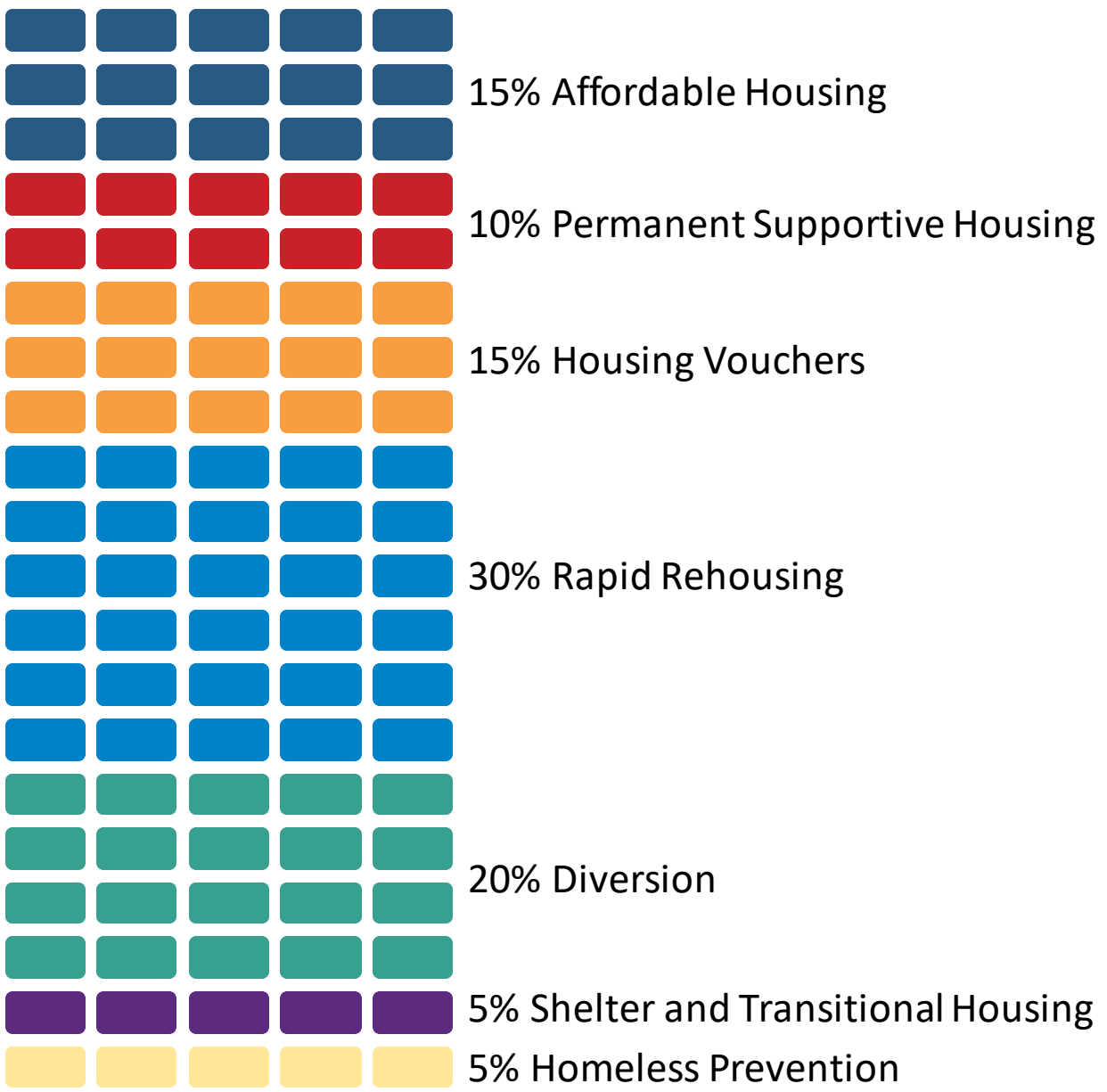
# six Goals

1. Create a unified, regional system and response
2. Use DATA to ensure interventions are effective for all
3. Prevent homelessness
4. Ensure adjacent programs meet needs of homeless population
5. Meet immediate needs of those experiencing homelessness
6. Expand permanent housing



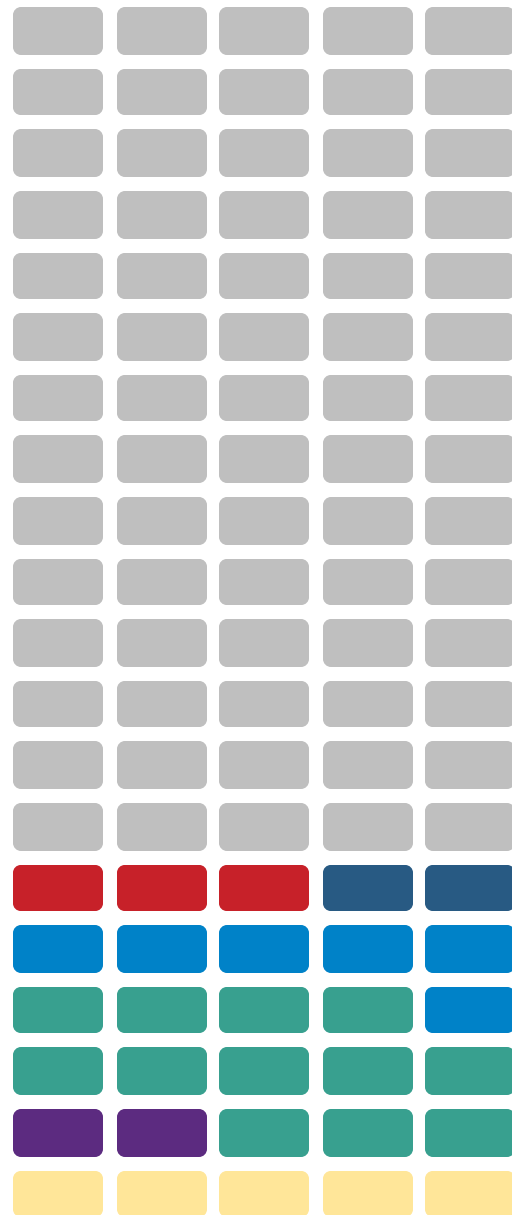


# FUNCTIONAL ZERO



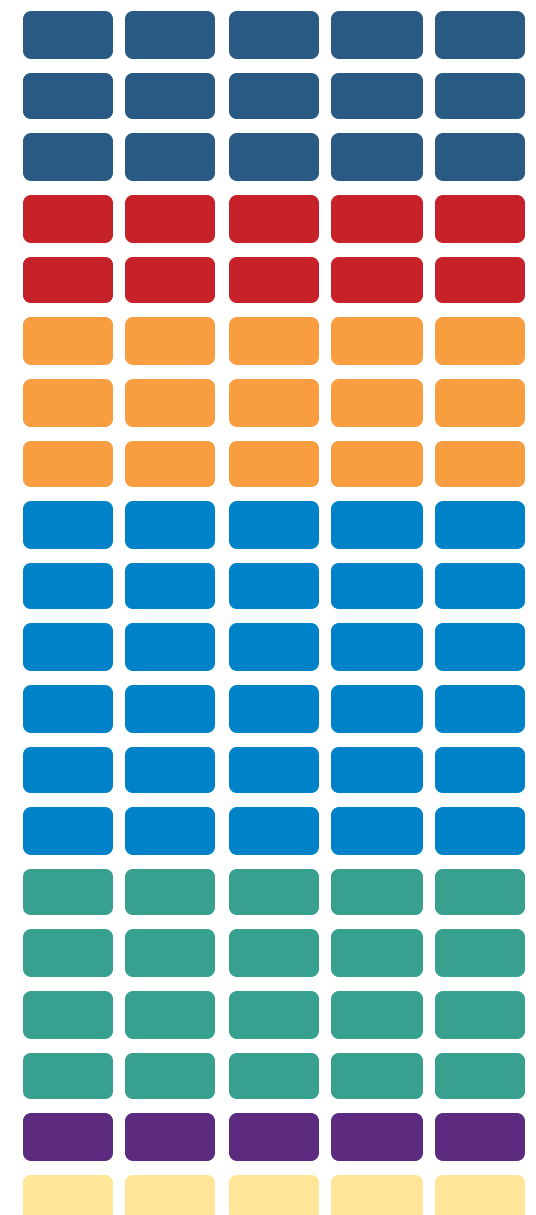


## FUNCTIONAL ZERO



## RECOMMENDATIONS

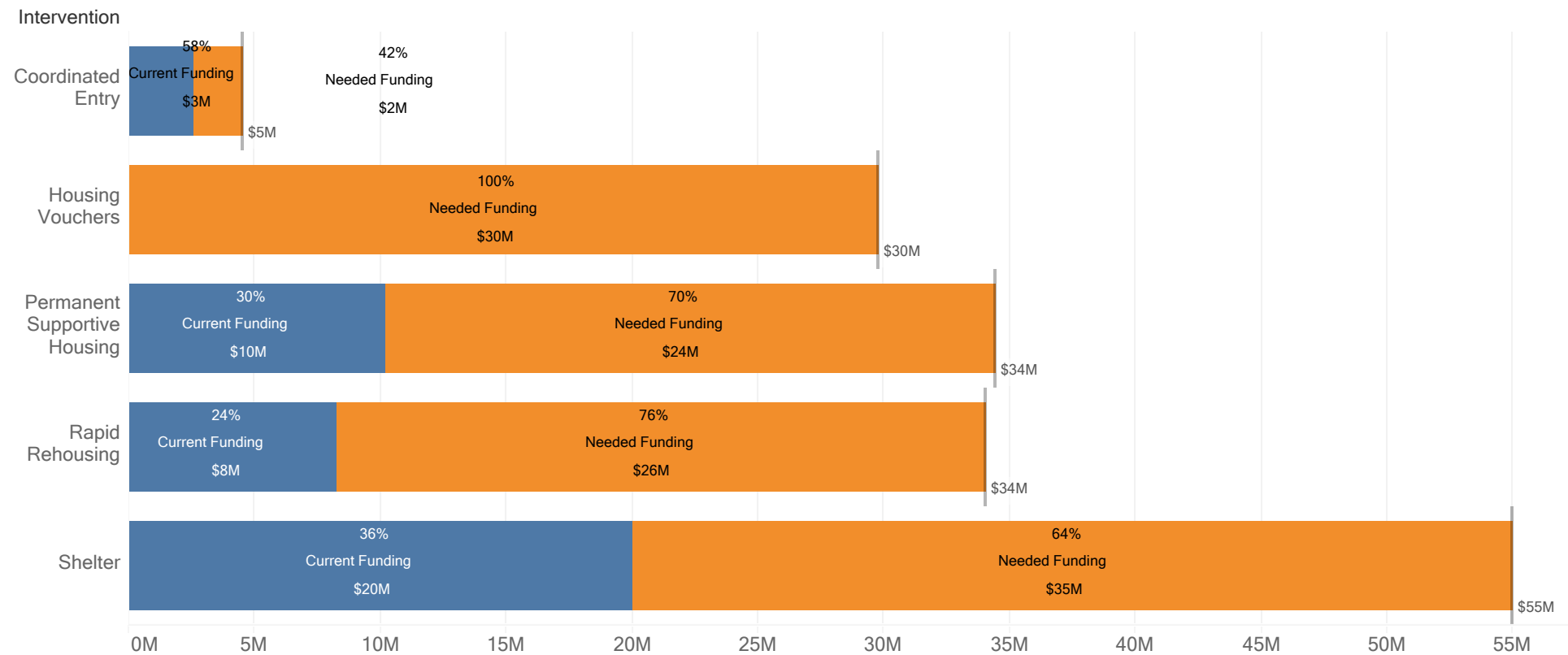
- 15% Affordable Housing
- 10% Permanent Supportive Housing
- 15% Housing Vouchers
- 30% Rapid Rehousing
- 20% Diversion
- 5% Shelter and Transitional Housing
- 5% Homeless Prevention





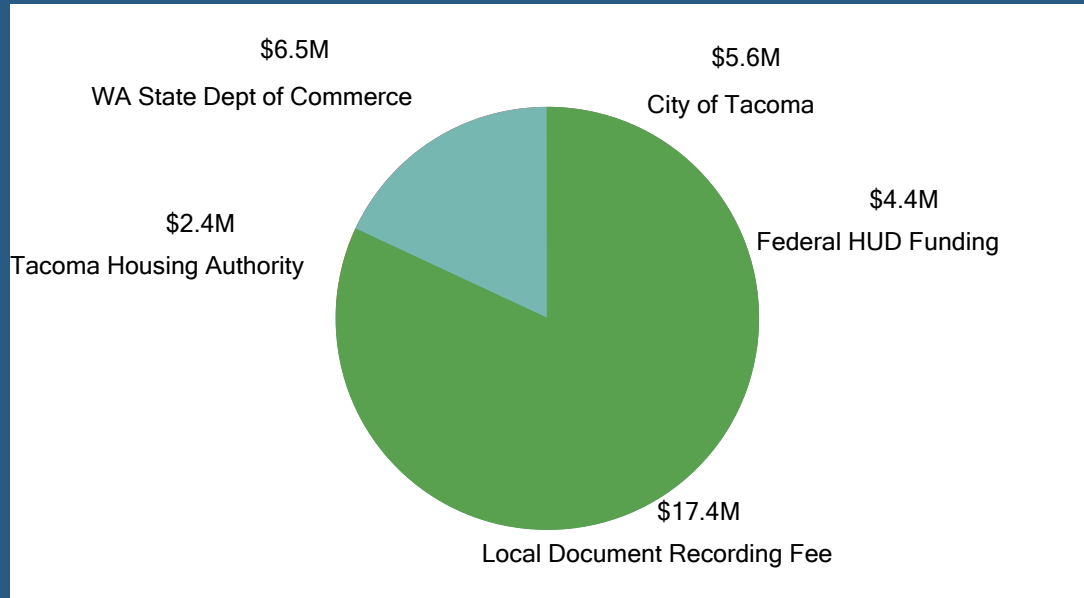
# Annual Costs

## Current and Needed Annual Operations Funding



# Recurring Funding Needs

Current Recurring Funding: \$36M



Additional Annual Funding Need: \$117M

## Potential Recurring Sources:

- Federal
- State
- Local Government
- Philanthropic
- Business Community

# Capital Funding - Rough Estimates

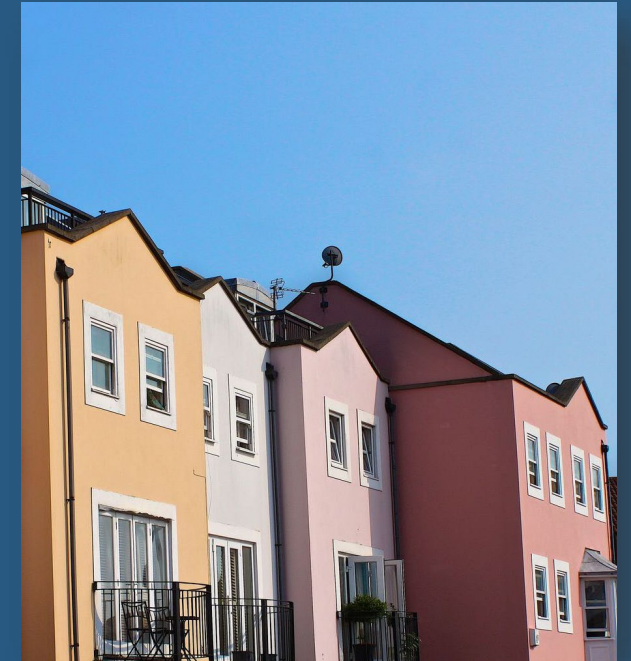
Shelter  
~\$15M



Permanent  
Supportive Housing  
~\$400M



Affordable  
Housing  
(even more \$)



# Cost Offsets

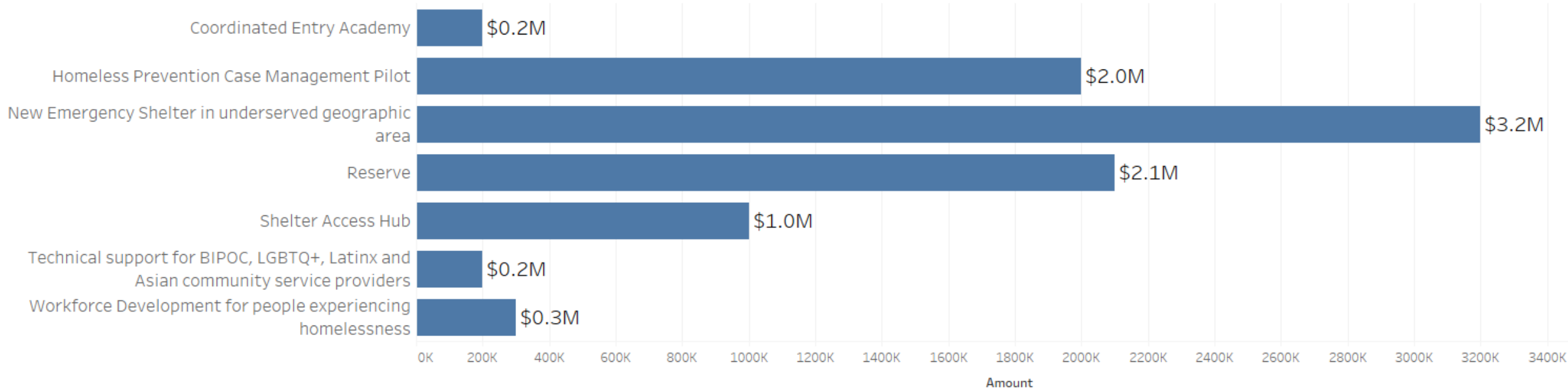
**\$48 Million**  
*per year*

Conservative  
estimate of adjacent  
system costs savings  
by reaching  
Functional Zero

Indirect Costs Per Household of Not Addressing Homelessness	
Mainstream System Costs	
Healthcare	\$ 8,191
Law Enforcement & Criminal Justice	\$ 5,146
Social Services	\$ 1,123
Public Service	\$ 142
Opportunity Costs	
Tourism	\$ 1,756
Local Business	\$ 2,539
Education	\$ 207
Poverty Trap	\$ 2,534
<b>12 month cost per household</b>	<b>\$ 21,638</b>
<b>1 month cost per household</b>	<b>\$ 1,803</b>

# Proposed Initial Funding

Proposed Uses for Initial \$9M Allocation to Implement Comprehensive Plan





# Next steps

- Reach out to partners and jurisdictions to educate on plan.
- Develop implementation steps.
- Draft goals for funding strategy...then we will come back to speak to many of you!
  - Local jurisdiction contributions
  - Business role? Philanthropy?
- Implement steps to achieve functional zero in Pierce County.
  - Other partner supports/efforts





# Questions?