

Tacoma Dome Link Extension

Tacoma City Council Study Session

March 21, 2023



Agenda

- Introducing our new CEO Julie Timm
- Tacoma Dome Link Extension (TDLE) Update
- Hilltop Link Extension (HTLE) Update
- South Tacoma Sounder Access Improvements Update
- Questions and Discussion



Introducing our new CEO, Julie Timm

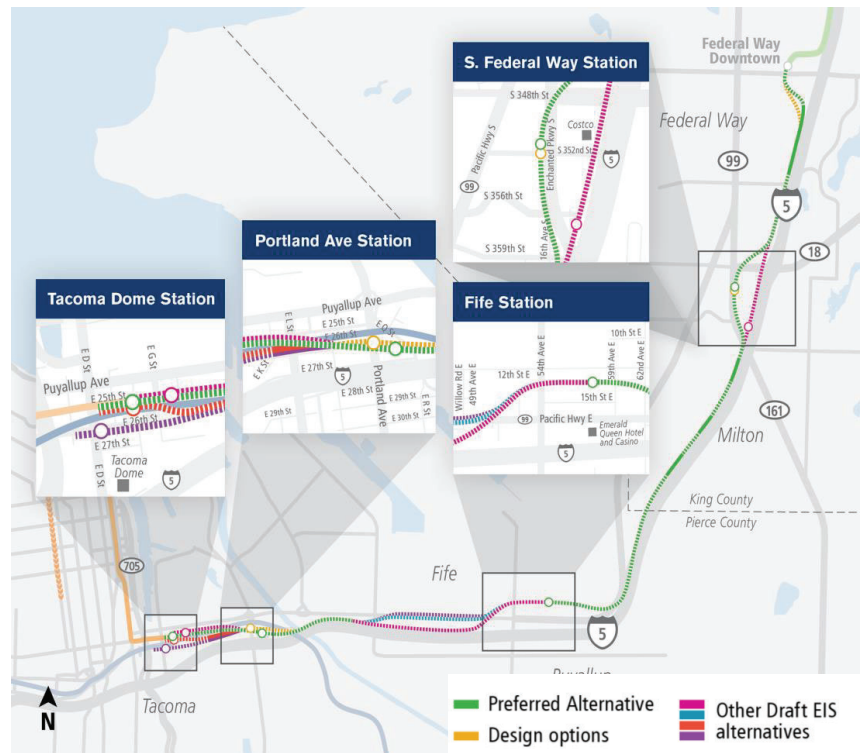


TDLE Update

Tacoma Dome Link Extension (TDLE)

Status update

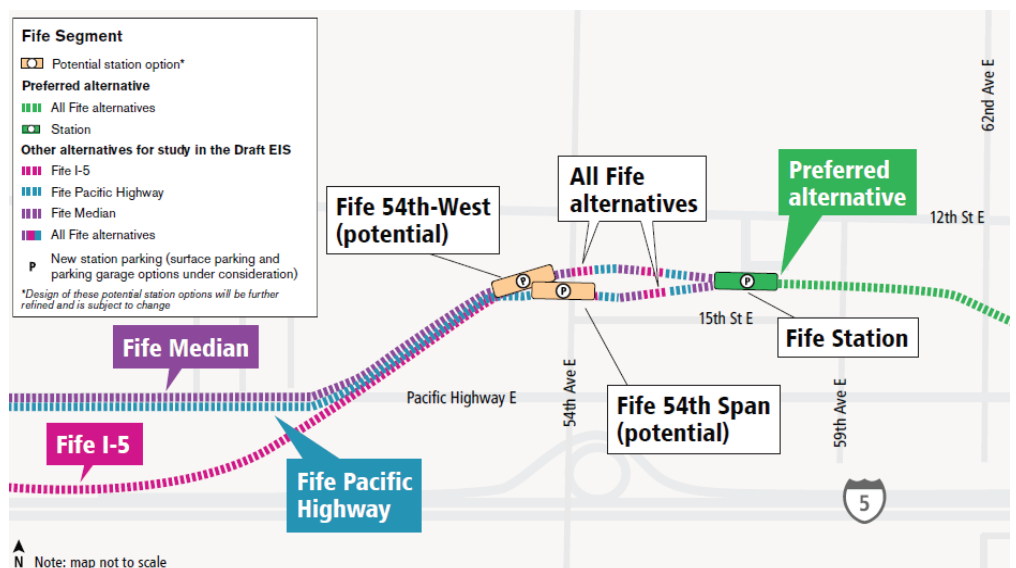
- Sound Transit Board identification of additional alternatives to study March 23, Board Meeting
- Public engagement on potential additional alternatives February 27 to March 17



5

Fife proposed additions: Two station options

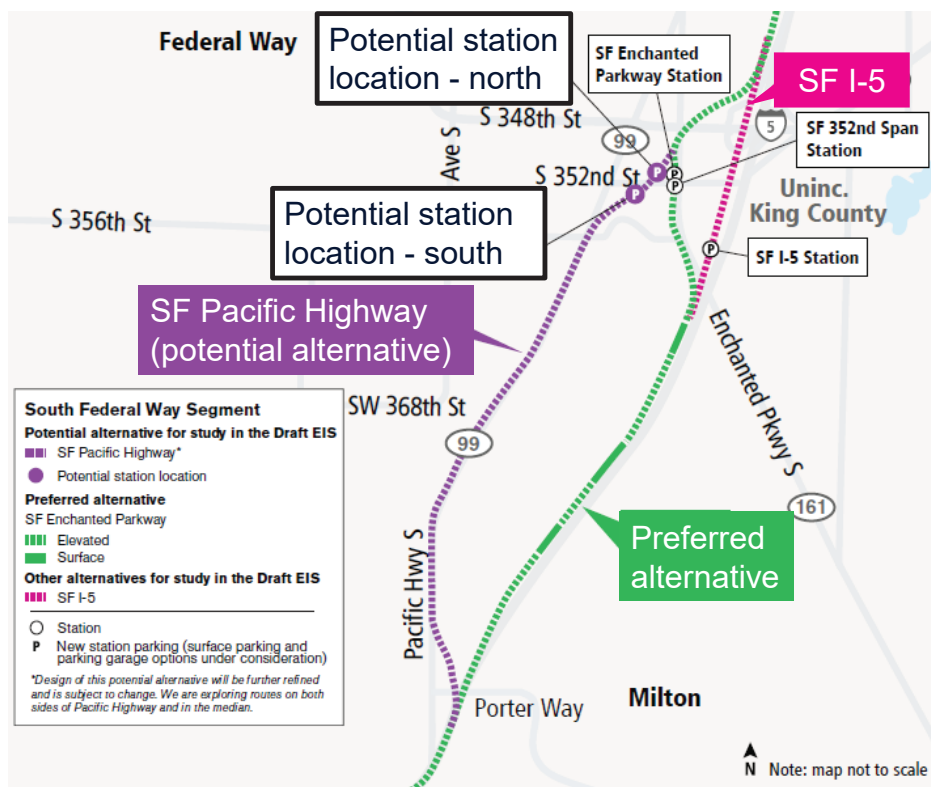
- Proposed additional stations:
 - Fife 54th-West
 - Fife 54th Span
- Intended to meet federal environmental regulations related to floodplains
- Current PA remains in Draft EIS



6

South Federal Way proposed additions

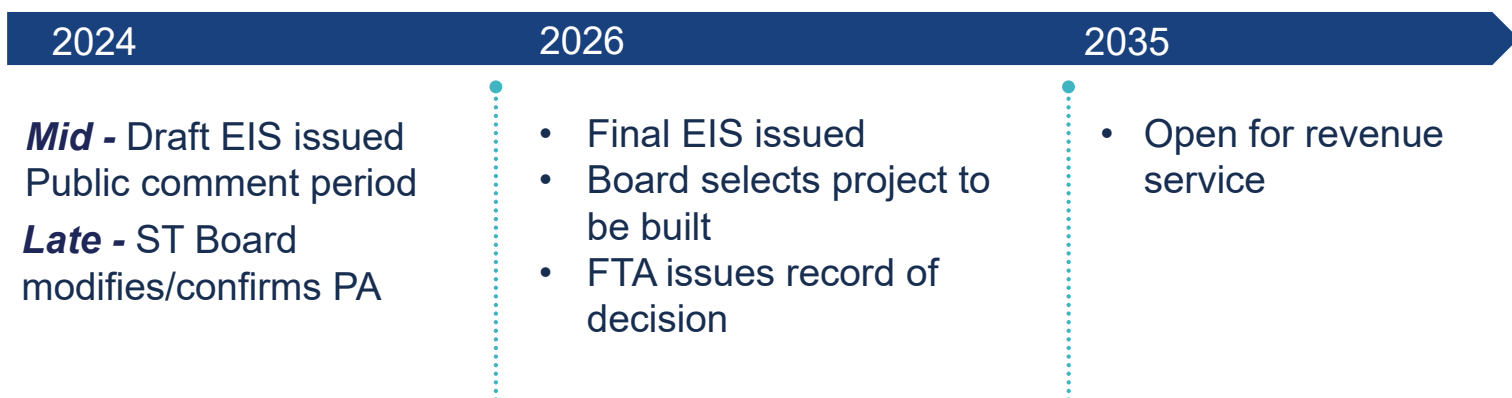
- Alignment from South Federal Way to Milton along Pacific Highway/SR 99 with two station options
- Seeks to avoid known cultural resources along I-5
- The I-5 alignment south of the station area would advance as additional alternative to study in the Draft EIS, no longer as the preferred alternative.



7

SOUNDTRANSIT

TDLE Schedule Implications*



* Assumes March 2023 identification of additional alternative/options to study in EIS, subject to change

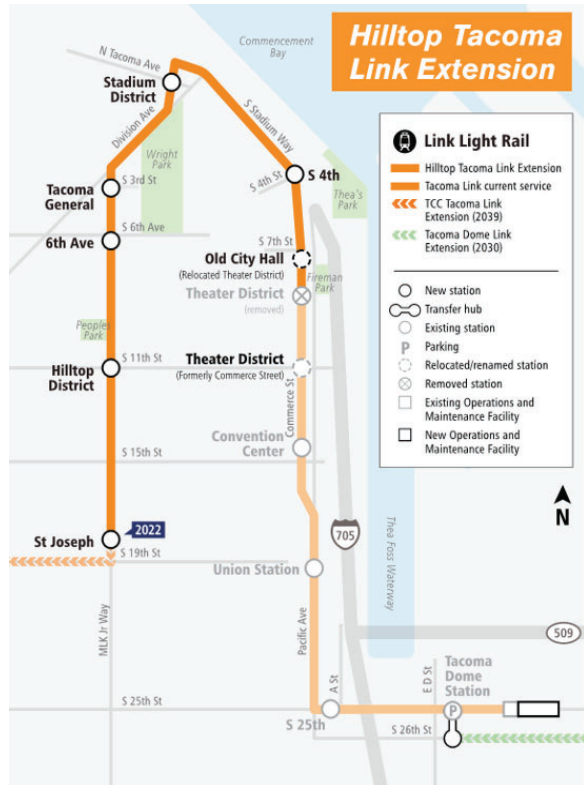
8

SOUNDTRANSIT

Next steps

- Complete public engagement on proposed additional alternative and station options
- March 23 Board Action to identify additional alternatives to study in the Draft EIS
- Additional analysis in S. Federal Way, Milton, and Fife
- Draft EIS publication and comment period
- Future board action to modify or confirm preferred alternatives

HTLE Update



Hilltop Tacoma Link Extension (HTLE)

Status

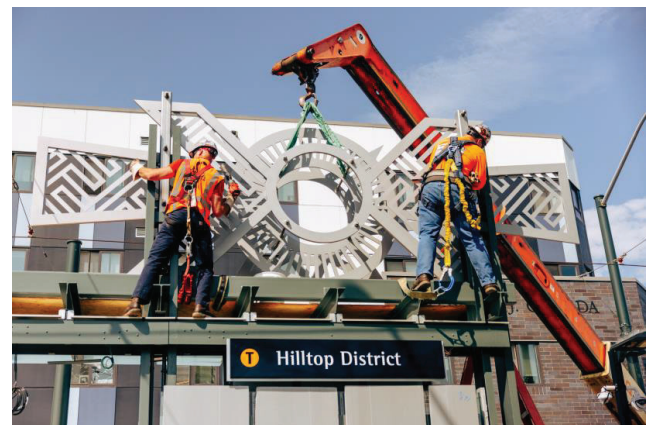
- 98 percent complete
- Systems Integration Testing
- LRV burn-in and conditional acceptance
- Rail Activation

11



Remaining Work

- **Remaining Construction Work**
 - Station finishes e.g. handrails, signage
 - Side street pavement restoration
 - Punchlist in all three headings
 - Testing and Commissioning
- **Systems Integration Testing (SIT)**
 - This phase of the project validates the systems functionality, operation and performance.
 - Tests the following systems: Communication/SCADA, Power, Signals, Stations, and Track



12



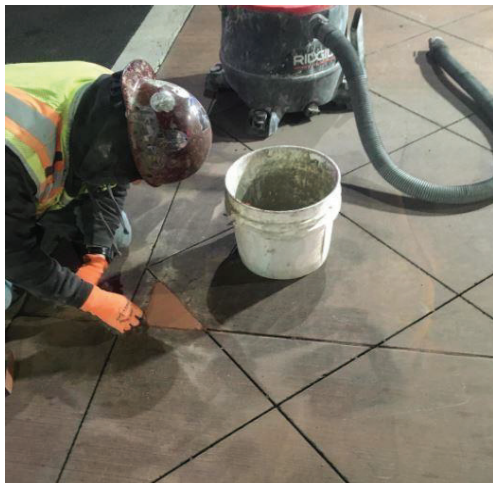
Remaining Work

- Construction contract work



Remaining Work

- Punchlist work



Remaining Work

- Systems Integration Testing



Community Engagement

Sound Transit Board approves T Line fares
Fares take effect upon Hilltop Tacoma Link Extension opening in 2023
 October 27, 2022

Sound Transit's Board of Directors voted unanimously today to institute fares for Tacoma's T line. The fares, to commence when the new Hilltop Tacoma Link Extension opens next year, will be \$2.00 Adult, \$1.00 ORCA LIFT (per the current Board-approved pilot), \$0 Youth and \$1.00 Senior/Disabled. The \$2 adult fare aligns with the current Pierce Transit bus fare.

The Hilltop Tacoma Link Extension project will extend the current line north from downtown Tacoma to the Stadium district, then turn southwest, terminating in the Hilltop neighborhood. This 2.4-mile extension will add an additional six stations and is scheduled to open in the first quarter of 2023. Major destinations along the extension include MultiCare Tacoma General Hospital, Stadium High School and St. Joseph Medical Center.

LINK TRAIN SAFETY POSTER CONTEST

The Tacoma Link is making it easier to get where you want to go in our Stadium and Hilltop neighborhoods. Riding is convenient, but the tracks are at street level. Use your creativity and talent to help raise awareness of how to stay safe on and around the Link.

Submit a poster design demonstrating the theme of this contest: **Keeping Our Community Safe Around the Light Rail.**

Selected winners will receive a cash prize and the opportunity to have their poster displayed on the train and at local businesses. This contest is open to Tacoma Public School students in kindergarten through 12th grade.

For questions or more info, please contact steemj@graduatetacoma.org

Sound Transit
 Admin • February 21 at 8:33 AM

Happy 6 year Anniversary to our very own **Red Elm Cafe!** From getting your morning breakfast and coffee or meeting your neighbor for lunch to catch up, Red Elm is a must when visiting Hilltop! #loyaltothelocal

And there was a really cool vibe of like, getting to know

South Tacoma Sounder Access Improvements Project

Project Overview

Proposed improvements:

Walking, biking, rolling, busing
and/or driving to the station

Project goals:

Equity, affordability, access,
environment, partnership and
passenger experience

Target schedule: 2030

Current Phase:

Conceptual Engineering
and Environmental



Example Improvements

Station vicinity:

- Complete sidewalks and curb ramps; add wayfinding, lighting
- Upgrade bus stops
- Path north of SERA Park
- 58th and 60th: improve crossings, sidewalks
- Adams Street: sidewalks, bike facilities

Others:

- 58th St near Edison: sidewalks, curb ramps
- Bicycle lanes and boulevards: Fife St, Washington, Puget Sound Ave
- SERA Campus shared parking



19

Recent Engagement (back in person)



20

Thank you.



 soundtransit.org

