



## One Tacoma Plan – Periodic Update

City of Tacoma | Planning and Development Services

**City Council Study Session**  
**February 11, 2025**



1

## OVERVIEW



### Purpose:

Provide an update on progress to update the One Tacoma Comprehensive Plan consistent with State and Regional planning requirements.

### Presentation Outline:


1. Background
2. State and Regional Planning Requirements
3. Project Timeline and Status
4. Draft Vision and Focus Areas
5. Transportation and Mobility Plan
6. Next Steps

2

2

## WHAT IS THE ONE TACOMA PLAN?

- Long-range perspective on topics that address the physical, social, environmental, and economic health of the City.
- It guides decisions on land use, transportation, housing, capital facilities, parks, and the environment.
- Establishes the basis for zoning and development regulations.



01 Introduction + Vision	02 Growth Strategy	03 Complete Neighborhoods	04 Environment + Watershed Health
05 Housing	06 Transportation	07 Economic Development	08 Parks + Recreation
09 Public Facilities + Services	10 Historic Preservation	11 Engagement + Administration	

3

3

## HOW THE PLAN IS USED

### Example – Permit and Development Process

**Planning**  
Establishing  
Community Vision and  
Priorities

**Outcome:**  
Plans, Policies,  
Goals

**Key Participants:**  
Council, Advisory  
Commissions,  
Community, Staff

01

**Permit Review**  
Ensuring a proposal's  
consistency with  
community standards

**Outcome:**  
Development  
Permits

**Key Participants:**  
Applicant, Staff,  
Community (as  
appropriate)

03

**Code Development**  
Establishing community  
standards

**Outcome:**  
Codes addressing  
Building, Zoning,  
Infrastructure,  
Environment, etc.

**Key Participants:**  
Council, Advisory  
Commissions,  
Community, Staff

02

**Construction**  
Inspecting to ensure a  
project's consistency  
with approved permits

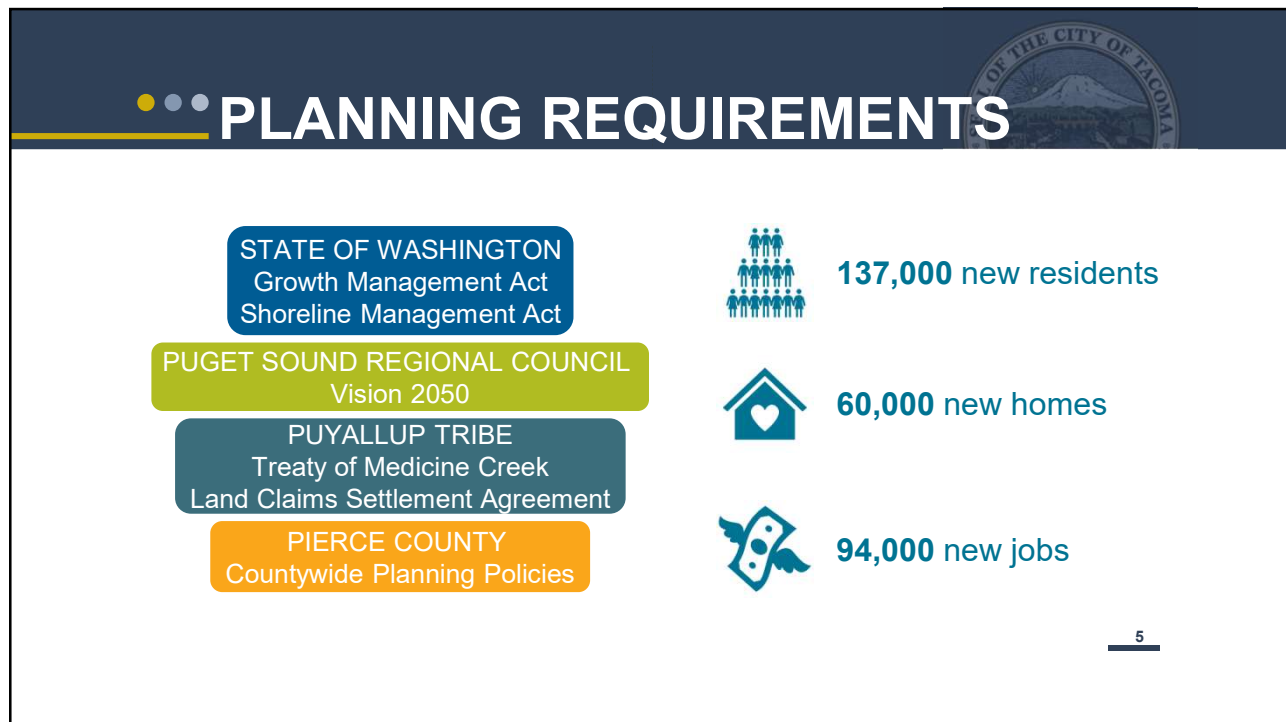
**Outcome:**  
Completed  
Project

**Key Participants:**  
Builder, Staff

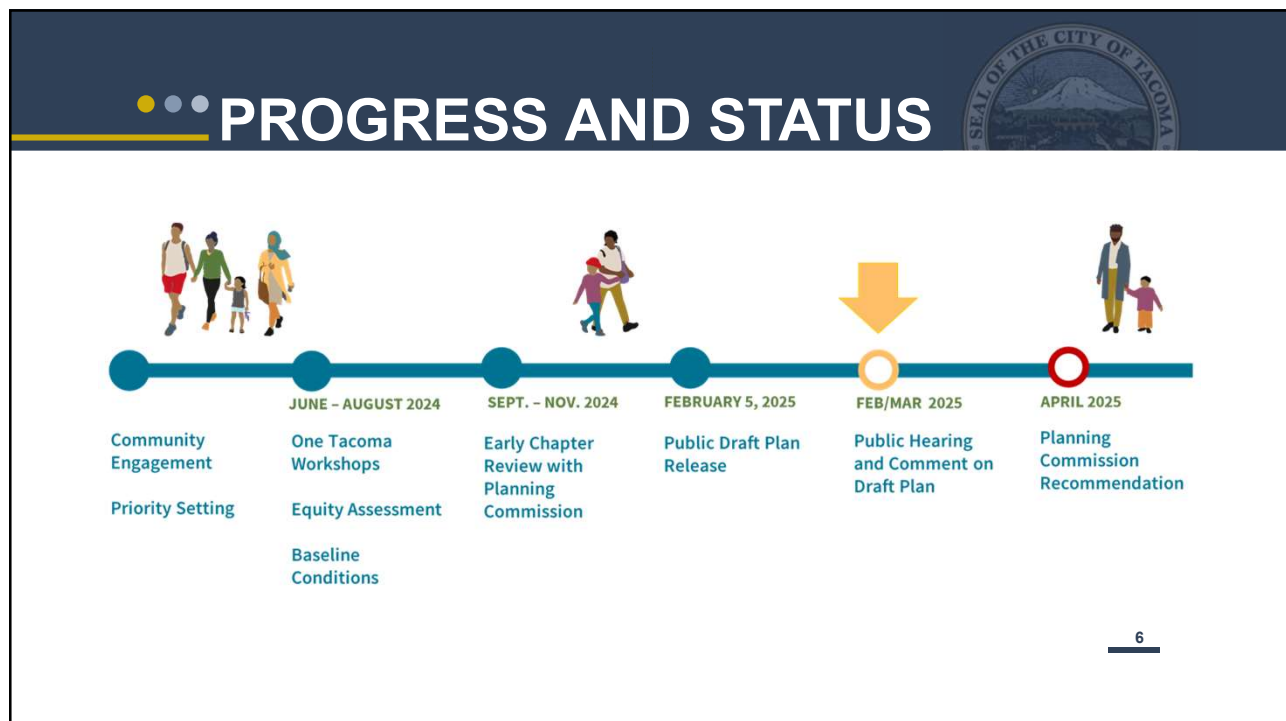
04

4

4



5



6

## COORDINATED PLANNING AND ENGAGEMENT

- Spotlight on South Tacoma
- One Tacoma Community Workshops
- Ideas Wall
- Community Sponsored Events
- Citywide Survey



7


7

## PROPOSED VISION


*The One Tacoma 2050 Vision is that every Tacoma resident is a safe and short walk, roll, bus, train, or bike ride away from daily essentials and community amenities, such as groceries, schools, parks, and healthcare. The chapters of the plan are focused on contributing to this vision and the focus areas of Equity, Opportunity, Public Health, Safety, and Sustainability.*

8


8




## FOCUS AREAS




**OPPORTUNITY** is best reflected in neighborhoods where residents can reach their full potential. This means that daily essentials, such as healthcare, healthy food, and schools are within easy reach. It also includes amenities – gyms, personal services, bookstores, arts experiences – that inspire wellbeing and open new opportunities.




**EQUITY** refers to the ability for every resident to share in community progress. As Tacoma grows, care and attention must be paid to ensure that the benefits of this growth are equitably distributed. This includes attention to potential displacement and to how processes for public investment and access to services can be improved.



**PUBLIC HEALTH** encompasses all the public supports that people need to maintain healthy minds and bodies. The quality of the built and natural environment can have great impact on the local population's resilience against health hazards like heat events, water and air pollution, and behavioral health challenges.



**SAFETY** has been a top priority for the City of Tacoma and will continue to be in the future. This plan seeks to align policies and programs in a way that enables everyone to feel safe as they live, work, play, and move throughout Tacoma.



**SUSTAINABILITY** captures the intention to plan not only to 2050, but further beyond to consider the wellbeing of future generations of Tacomans and the natural environment in which Tacoma is situated. Integrating the Climate Action Plan and Adaptation Strategy in this update is a key part of planning for sustainability.

9

9



## POLICY ELEMENTS

POLICY AREAS	URBAN FORM	PUBLIC FACILITIES + SERVICES
Policies within "Chapters" of the plan are the City's tools for making progress on the Vision and Focus Areas. Targets within each chapter measure successful implementation of those policies	<p>Enabling a mix of home types and businesses across neighborhoods</p> <ul style="list-style-type: none"> <li>Key Targets: Jobs and residential growth</li> </ul>	<p>Providing services and facilities such as roads, utilities, parks, education, and safety</p> <ul style="list-style-type: none"> <li>Key Targets: Levels of Service</li> </ul>
	<p><b>COMPLETE NEIGHBORHOODS</b></p> <p>Guiding the design and development of our city's buildings</p>	<p><b>PARKS + RECREATION</b></p> <p>Creating fair access to parks and recreation services</p> <ul style="list-style-type: none"> <li>Key Targets: Access to a park or open space within a 10-minute walk</li> </ul>
	<p><b>HOUSING</b></p> <p>Providing fair and accessible housing for all Tacoma residents</p> <ul style="list-style-type: none"> <li>Key Targets: Housing units</li> </ul>	<p><b>ENVIRONMENT + WATERSHED HEALTH</b></p> <p>Protecting our watersheds, trees, open spaces, and wildlife habits</p>
	<p><b>TRANSPORTATION</b></p> <p>Building an accessible and affordable transportation network</p> <ul style="list-style-type: none"> <li>Key Targets: Multimodal Level of Service</li> </ul>	<p><b>ECONOMIC DEVELOPMENT</b></p> <p>Boosting economic opportunities for all residents</p>
	<p><b>ENGAGEMENT + ADMINISTRATION</b></p> <p>Ensuring community members meaningfully shape Tacoma's future</p>	<p><b>HISTORIC PRESERVATION</b></p> <p>Highlighting communities histories and the human stories behind them</p>

10

10

# ●●● EQUITY OUTCOMES



EQUITY	OPPORTUNITY	PUBLIC HEALTH	SAFETY	SUSTAINABILITY
Every resident shares in community progress.	Neighborhoods where residents can reach their full potential.	Support to maintain healthy minds and bodies.	A place where everyone feels safe to live, work, and play.	Achieving climate goals and planning for future Tacomans.

## EQUITY OUTCOMES


Measurable outcomes used to operationalize the Vision and Focus areas by guiding policy writing and identifying potential priority groups

- HOUSING COST BURDEN
- HOMELESSNESS
- FIRST-TIME HOMEBUYING
- LIFE EXPECTANCY
- ACCESS TO HEALTHY FOOD
- YOUTH MENTAL HEALTH
- URBAN HEAT
- AIR QUALITY
- HIGH-CAPACITY TRANSIT ACCESS
- BICYCLE AND PEDESTRIAN INFRASTRUCTURE
- TRANSIT DEPENDENCY
- WALKABILITY
- POLICE RESPONSE TIME
- PERCEPTION OF SAFETY
- HOUSEHOLD INCOME
- CHILDHOOD POVERTY
- GOOD AND PROMISING JOBS
- ACCESS TO ARTS, CULTURE, SCIENCE AND/OR HERITAGE
- REPRESENTATION IN HISTORIC PRESERVATION

11


11

# ●●● TRANSPORTATION and MOBILITY PLAN



## VISION

To create and sustain a transformative multimodal transportation system that connects people to places and people to people.



*Illustration: Natalie Dupille*

12

12






## TRANSPORTATION and MOBILITY PLAN

<b>GOAL 1</b> Advance Equity and Livability	<b>GOAL 2</b> Ensure a Safe and Comfortable Experience	<b>GOAL 3</b> Make Tacoma an Environmentally Sustainable and Healthy Place to Live	<b>GOAL 4</b> Cultivate Meaningful Partnerships
<b>GOAL 5</b> Promote Transparent Decision-Making	<b>GOAL 6</b> Connect the Tacoma Community	<b>GOAL 7</b> Maintain and Upgrade Tacoma's Transportation Resources	<b>GOAL 8</b> Support a Thriving Economy

13

13



## TRANSPORTATION and MOBILITY PLAN

Mode or Function Element	Element Vision or Outcome
<b>Pedestrian</b>	Safe, accessible, and comfortable mobility for people walking and rolling on all of our city streets.
<b>Bicycle</b>	All ages and abilities network provides safe, connected access to our city.
<b>Transit</b>	Frequent, reliable mobility connecting all neighborhoods and to the region.
<b>Freight</b>	Reliable access to Port facilities and regional freeways, and ensure essential items reach Tacoma businesses.
<b>Auto</b>	Streets designed to encourage slower speeds and support emergency response and goods delivery.
<b>Curb Management</b>	Effective and equitable curb allocation to assure access between destinations and the transportation network.
<b>Public Realm and Activation</b>	Places for people to connect and community life to unfold.

14

14

## ●●● TRANSPORTATION and MOBILITY PLAN

- ☐ Performance Measures for Each Goal
- ☐ Strategies and Actions for Each Element
- ☐ Multimodal Level of Service Standards



15

## ●●● UPCOMING ENGAGEMENT

### One Tacoma Open Houses:

- Thursday, February 20: STAR Center at 6:00PM
- Monday, February 24: Online at 6:00PM
- Thursday, February 27: Wheelock Library at 1:00PM
- Saturday, March 1: Eastside Community Center at 1:00PM

### Public Comment Period:

- PC Public Hearing: March 5 at 6:00PM
- Comments due March 7 at 5:00PM

For more information: [cityoftacoma.org/onetacoma](https://cityoftacoma.org/onetacoma)

### Public Notice:

- Citywide mailing
- Social media
- Interested parties
- News release
- Notifications to the State and Puget Sound Regional Council
- Letters to the Tribe and JBLM
- Adjacent jurisdictions
- Local newspaper
- TV Tacoma

16

16



## ● ● ● TENTATIVE SCHEDULE



Target Date	Meeting	Milestone
Late April	Planning Commission	Recommendation
June 3	City Council	Public Hearing
June 10	City Council	Debrief
June 17	City Council	First Reading of Ordinance
June 24	City Council	Final Reading of Ordinance
June/July	PSRC	Certification Submittal

17