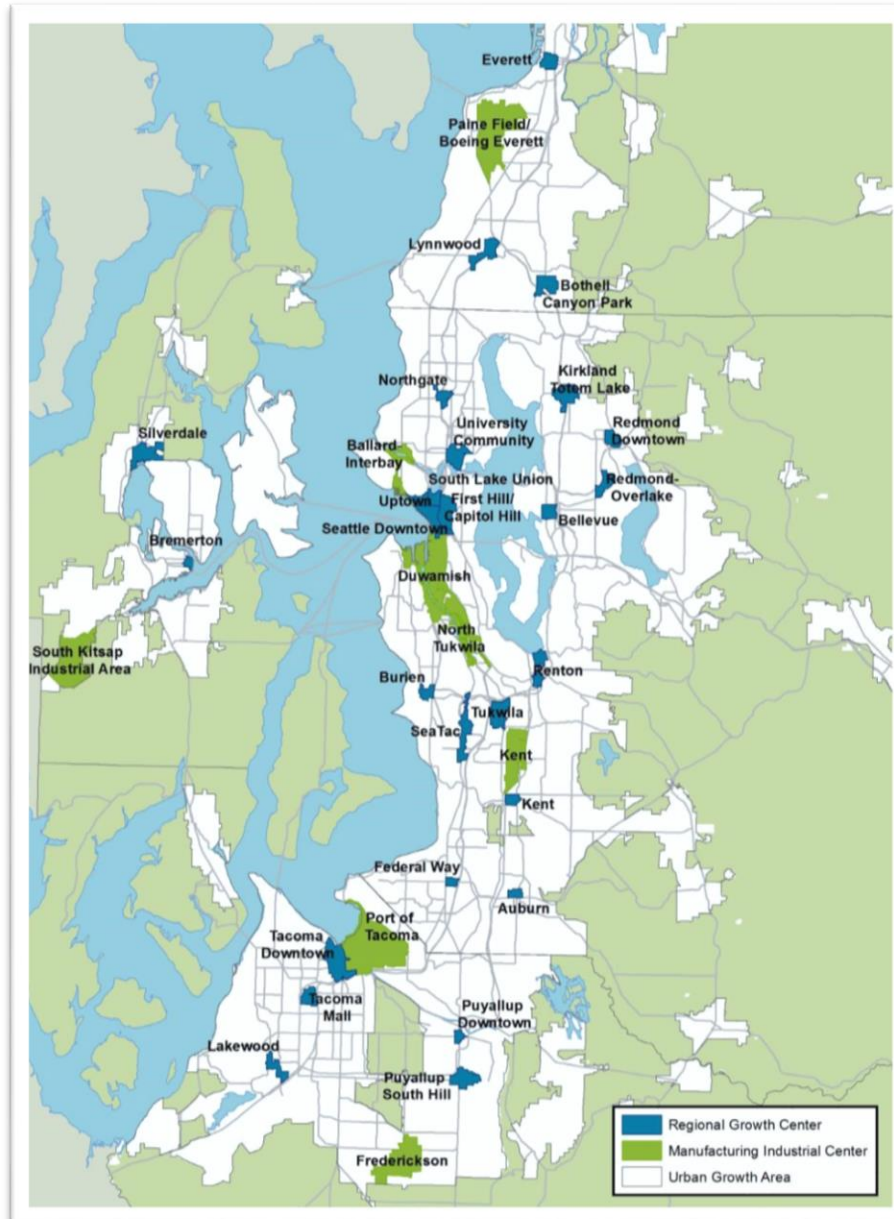


PSRC & Regional Planning

Integrated Plan for Sustainable Development

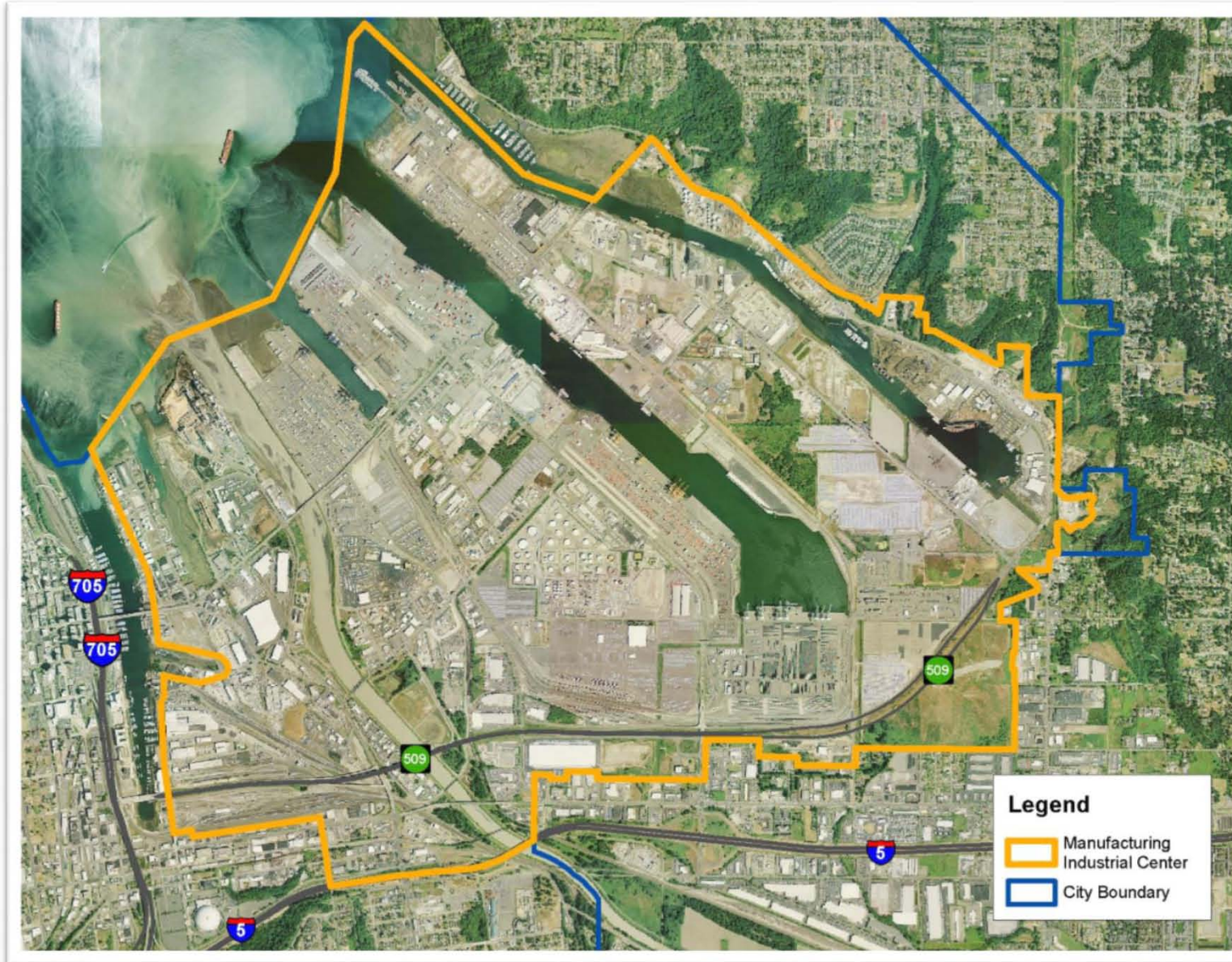


PSRC's Designated Regional Centers

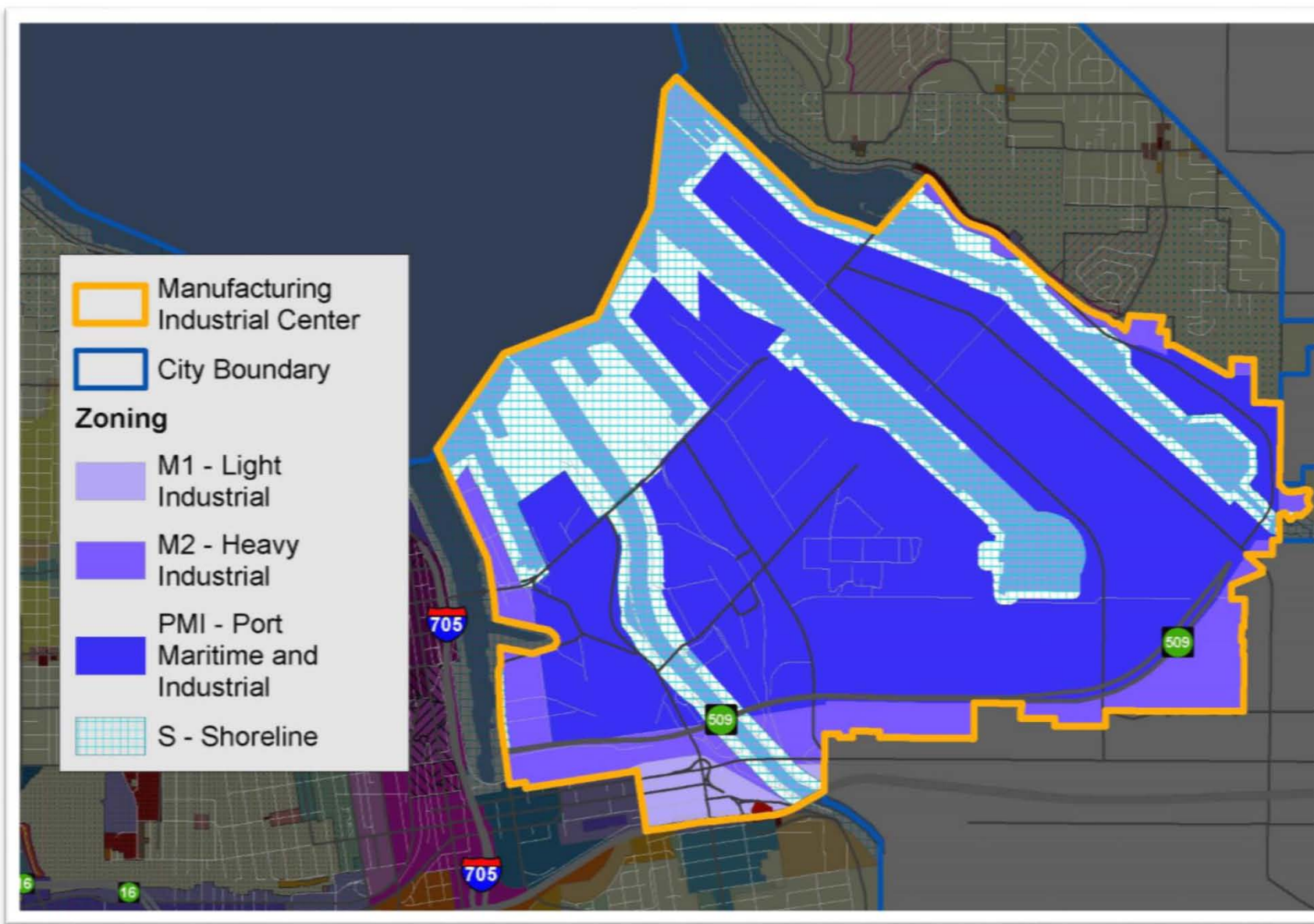


- 28 Growth Centers
- 8 Manufacturing/
Industrial Centers

Manufacturing/Industrial Center



Zoning



HB 1959 GMA Amendment (2009):

An act relating to land-use and transportation planning for marine container ports.

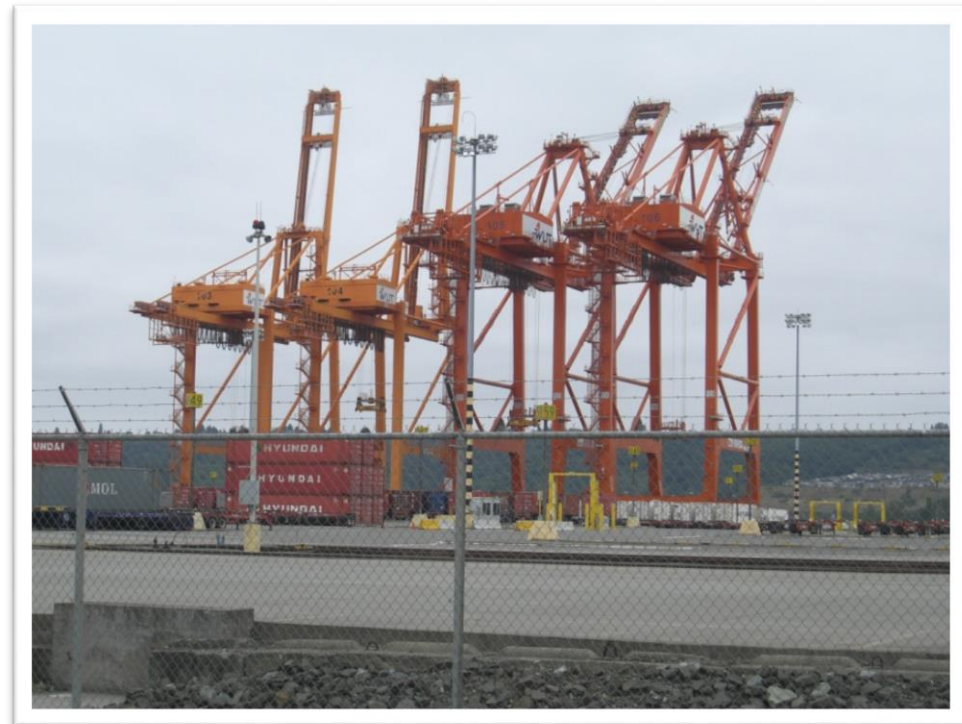


Container Port Element
Tacoma Comprehensive Plan – June 2014

Capital Facilities

Future capital facilities policies address

- Infrastructure improvements that promote long-term viability of area activities
- Funding sources and responsibilities
- Maintenance and operations



INDUSTRIAL LANDS ANALYSIS

For The Central Puget Sound Region

Discussion Draft for Growth Management Policy Board
December 31, 2014

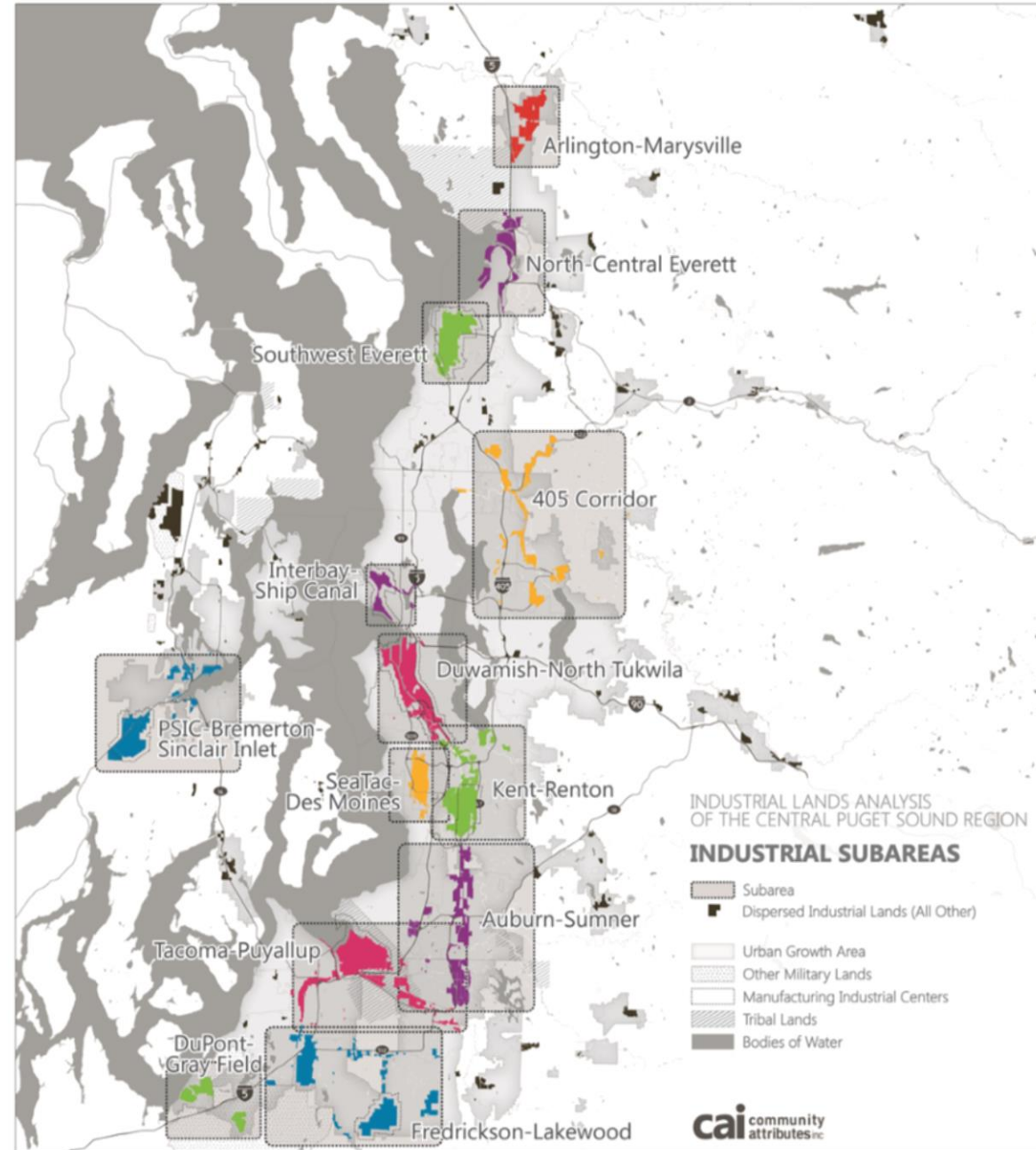


cai community
attributes inc.

Puget Sound Regional Council

A PSRC Study on Industrial Subareas in the Region

13 Subareas
+ Dispersed Land



Port's Land Use & Transportation Plan Purpose

- Help achieve Strategic Plan targets & goals
- Communicate long-term development plan
- Establish transportation priorities
- Coordinate land use and transportation plans
- Promote collaboration on shared initiatives



Public Access Plan Background

- City updated Shoreline Master Program
- Port/City drafted Shoreline Public Access Plan
- Public outreach
- Joint meetings and draft Interlocal Agreement
- Two Joint City/Port Study Sessions
- Elected bodies approved the ILA in late 2013

Public Access Plan

- Flexible approach to shoreline public access provision
- Identifies priority public access projects
- Fee-in-lieu methodology with credits for existing Port sites
- Reporting mechanism and ten-year duration
- Port tenants may use our agreement



Credit for Existing Sites Exhibit A

Path: L:\Projects\PublicAccess\10101 CreditForExistingSites.mxd


-  200' SMP
-  Capital Project
-  Public Access
-  Water
-  Port Owned Parcels
-  Tax Parcels

Map Date: 5/15/2013
Author: Jen Radcliff

Data Credits:
Parcel data is from Pierce County.
All other data from Port of Tacoma.



DISCLAIMER: The information included on this map has been compiled by Port of Tacoma staff from a variety of sources and is subject to change without notice. These data are intended for informational purposes and should not be considered authoritative for engineering, navigational, legal and other site-specific uses. The Port of Tacoma makes no representations or warranties, express or implied, as to accuracy, completeness, timeliness, or rights to the use of such information.



Tideflats Area | Transportation Study (TATS) Update

Sponsors

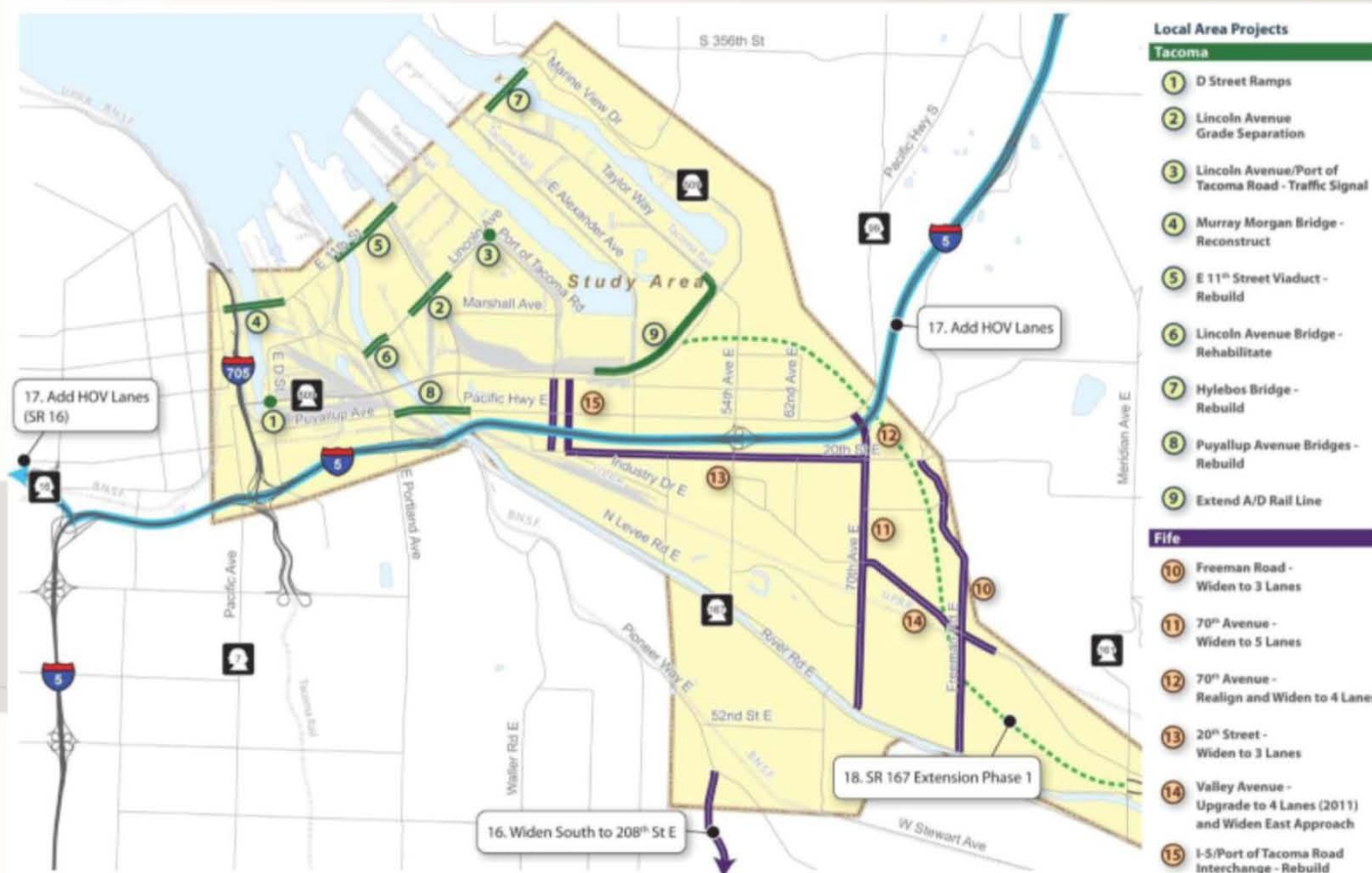
Port of Tacoma
City of Fife
City of Tacoma
WSDOT
Pierce County
Freight Mobility Strategic Investment
Board
Marine View Ventures
SSA Marine

August 2011

Tideflats Circulation and Preservation



Baseline Projects



Project Summary

091394 – Port of Tacoma Road Reconstruction City of Tacoma Project

Objective:

- Remove surface pavement between the curb lines on Port of Tacoma Road from E 11th St to Marshall Way (approx. 7,300 LF)
- Replace pavement with 10" cement concrete per Heavy Haul Industrial standards
- Install cement concrete sidewalk where missing; leave existing curb/gutter
- Restripe per the original channelization
- Install permanent signals at WUT (Lot F) and Lincoln Ave
- Install conduit for future ITS

Completion Target: Q4 2015

Consultant: NA, City of Tacoma project

Contractor: Merlino Construction

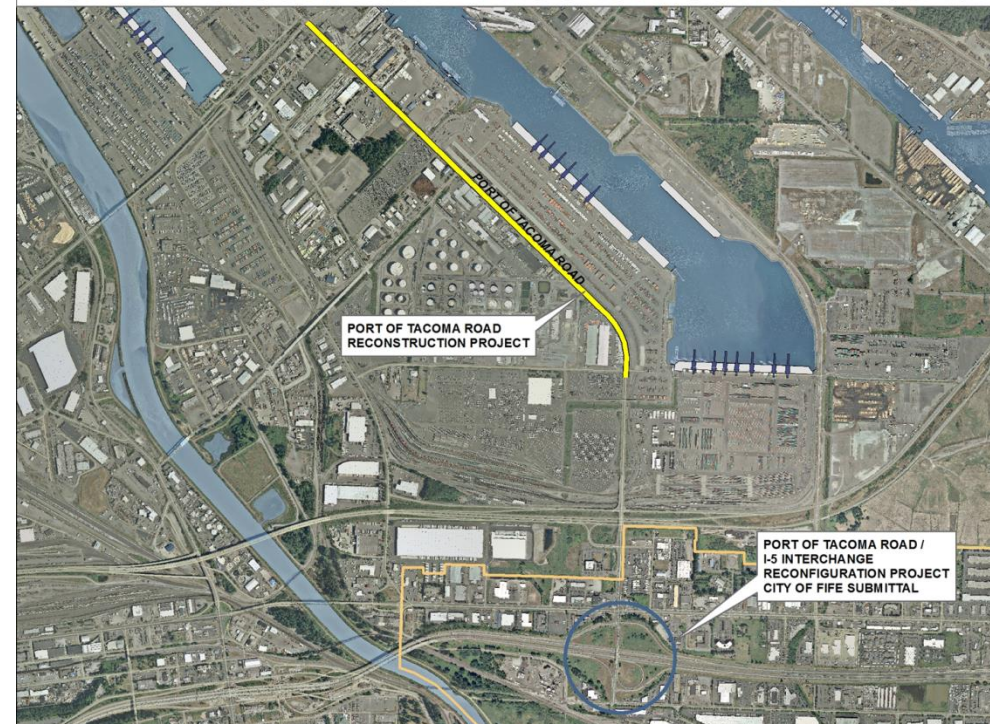
Risks/Issues: Truck queuing & detour routes

PROJECT SCHEDULE

June 2015

Task	2013	2014	2015	2016	2017
Design	■	■	■		
Construction			■	■	

PORT OF TACOMA ROAD RECONSTRUCTION PROJECT



Project Summary

Fife I-5 – Port of Tacoma Interchange Improvement Project

June 2015

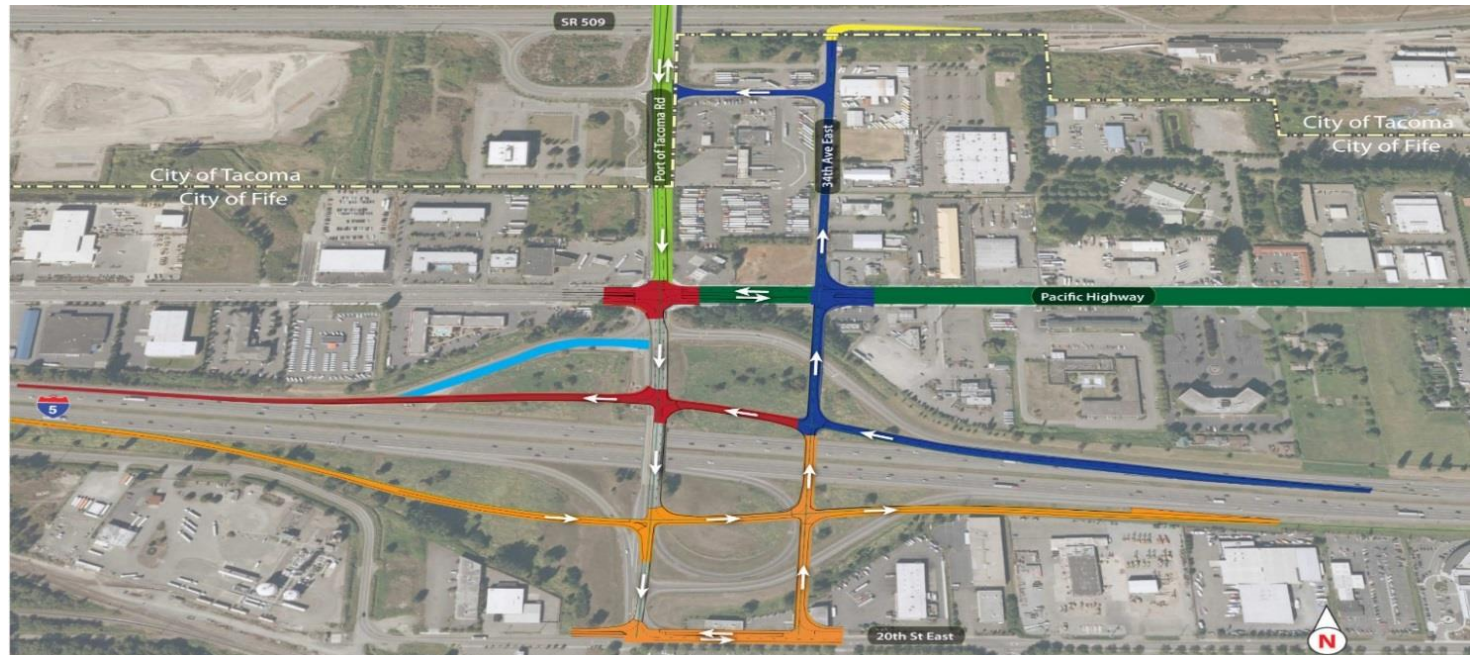
Project Description

This project will provide road, intersection, and interchange improvements of great value to the Port of Tacoma, the surrounding industrial area, and businesses in the Cities of Fife and Tacoma. The project is a multi-phased plan to improve the Port of Tacoma Road/Interstate 5 interchange, Pacific Highway East and the Port of Tacoma Road.

The next work to be funded is completion of design, beyond right-of-way plans, and phase 1 construction.

Recent Developments

The City of Fife received a \$4.1 million grant through the Puget Sound Regional Council's regional Surface Transportation Program (STP). These funds were used for design and future right-of-way acquisition. The City of Fife bought wetland mitigation sites and designed wetland mitigation measures.



Stage 0 Opportunity Assessment	Gate 1	Stage 1 Land Use Planning	Gate 2	Stage 2 Conceptual Planning	Gate 3	Stage 3 Preliminary Design	Gate 4	Stage 4 Design	Gate 5	Stage 5 Bidding & Contracting	Gate 6	Stage 6 Construction	Gate 7	Stage 7 Close Out
--------------------------------------	--------	---------------------------------	--------	-----------------------------------	--------	----------------------------------	--------	-------------------	--------	-------------------------------------	--------	-------------------------	--------	----------------------

Emergency Response and Intelligent Transportation Systems Study

- DRAFT Emergency Response Study reviewed by TFD
- Intelligent Transportation System (ITS)
 - Information Management
 - Traffic Management
 - Incident & Emergency Management
 - Commercial Vehicle Operations

