

Community Needs Assessment

City of Tacoma

Neighborhood & Community Services

Department

OVERVIEW

- Align with the City's policy priorities,
- Align with City's budget development process
- Understand unmet community needs
- Identify service gaps
- Provide recommendations for addressing those unmet needs
- Strategic investments informed by quantifiable data

BACKGROUND

- Substantial human/social service needs
- Resources currently available often fail to meet the basic needs of the most vulnerable populations
- Secondary/follow-up funding processes to meet gaps in fundamental service areas
- Historical funding processes are inconsistent and not supported by statistical data
 - Transparency, Accountability, Performance, Reporting

PURPOSE

- **CNA will:**

- Identify service gaps in human/social services
- Provide systematic view for addressing needs
- Explain the relationship(s) among service gaps
- Set the stage for achieving community goals in human services
- Help guide decisions for systems work and desired outcomes

- **CNA will not:**

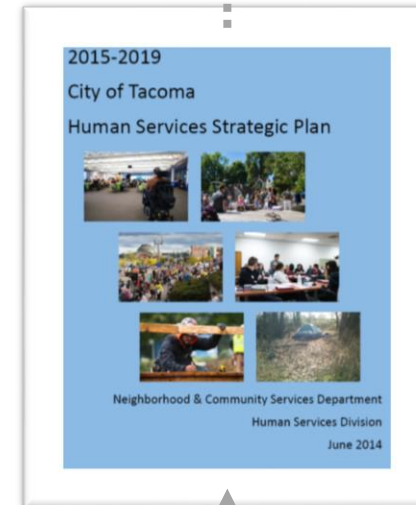
- Recommend what services should be funded/not funded
- Determine investment levels for human services

Guiding Documents



Human Services Strategic Plan Priorities

- Meet Basic Needs of Tacoma Residents
- Prepare Children and Youth for Success
- Increase Employability, Self-Determination and Empowerment for Adults
- Enhance Mental Health/Substance Use Disorder Services



Equity and Empowerment Framework Goals

- City of Tacoma Workforce Reflects the Community It Serves
- Purposeful Community Outreach and Engagement
- Equitable Service Delivery to All Residents and Visitors
- Support Human Rights and Opportunities for Everyone to Achieve Their Full Potential
- Commitment to Equity in Local Government Decision-making



City Programs and Policies

Community Needs Assessment

Components

GOALS

- Identify community needs
- Guide the allocation of city resources
- Help organize the priorities of City Council, Neighborhood and community Services, Human Services Commission and Committees
- Guide business planning, funding strategies, budget development and performance management.

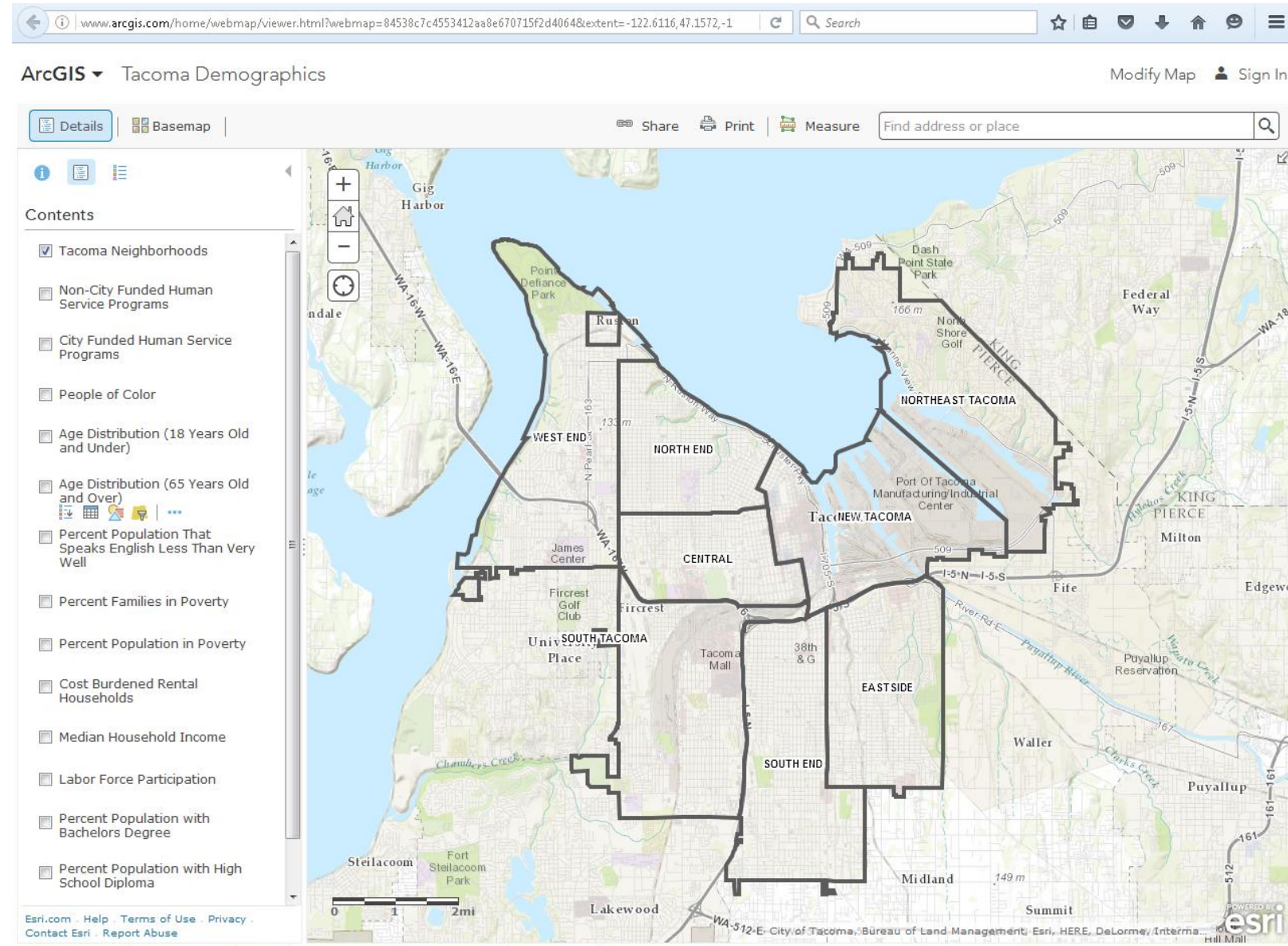
APPROACH

- Establish key assessment questions
 - Homelessness and Household Stability
 - Workforce Development and Economic Opportunity
 - Social and Health Wellbeing
- Review related literature.
- Identify and aggregate available secondary data.
- Community and Stakeholder engagement.

STRUCTURE

- Topline themes
- Three discussion chapters
- Web-based data tool
- Technical appendices

- Provides a common baseline and data clearing house.
- Supports customization of data views.
- Can be use by city staff, partners, and the public for assessing current needs and services.



Summary Findings

Assessment Question

Who in the community is at risk for experiencing homelessness?

Research-based Risk Factors For Homelessness

INDIVIDUAL FACTORS

- Living in poverty, particularly at a young age
- Violence in the family home
- Family disruptions
- Adverse childhood experiences
- Out-of-home placements
- Mental health difficulties, typically starting in late childhood
- Substance use disorders

STRUCTURAL FACTORS

- Housing displacement
- Economic opportunity
- Availability of affordable housing

Needs Assessment Findings

Childhood Poverty

Mental Health and Wellbeing

Limited Income and Household Stability

1 in 4 of Tacoma's children is living in poverty.

- Childhood poverty is growing, with many gains being wiped out in the last recession.
- In Tacoma, children who are American Indian or Alaska Native or Black are twice as likely to live in poverty than their peers.
- Many children are at risk for deep and persistent poverty.
- Many of Tacoma's homeless residents are children.



Photo from The News Tribune, May 10, 2016

Childhood Poverty



2 Human and Social Needs

- A. Increase housing security
- B. Improve services to youth and vulnerable populations.
- C. Reduce poverty.

4 Education and Learning

- A. Close the education achievement gaps.
- B. Prepare people to succeed in Tacoma's workforce

2015-19

Human Services Strategic Plan

1 Meet Basic Needs of Tacoma Residents

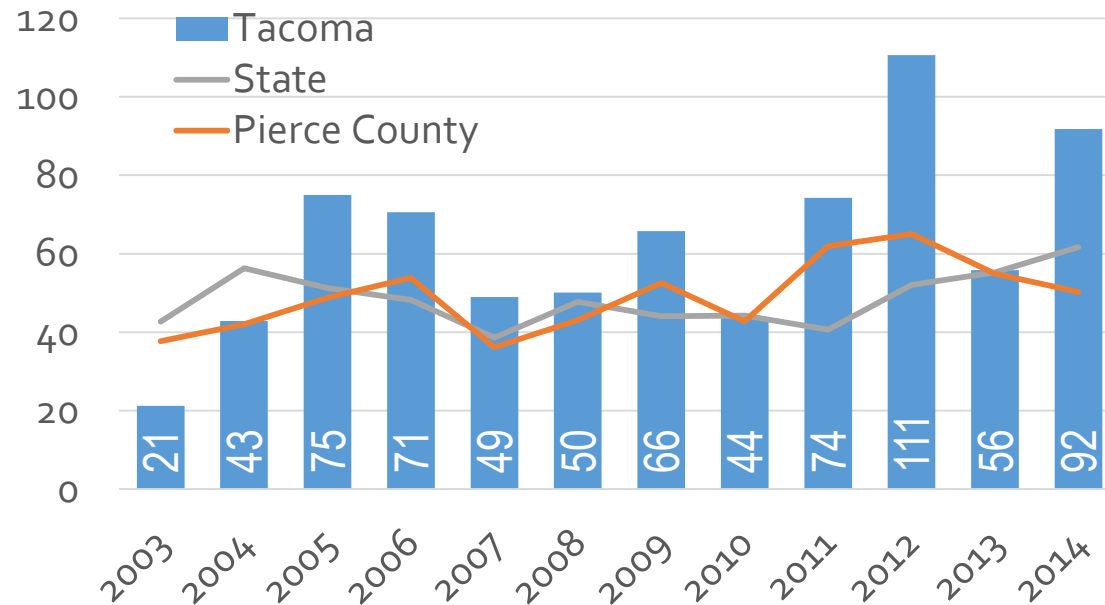
- **Housing Stability.** Prevention of and pathways out of homelessness.
- **Food Security.** Access to healthy food and optimal nutrition.
- **Safety.** Reduced interpersonal and intimate violence/abuse.

2 Prepare Children and Youth for Success

- **Children, Youth, and Family Development.** Quality environments for children and reduction the effects of negative childhood experiences and trauma.
- **Education and opportunity** for vulnerable children.
- **Gang Prevention and Intervention.** Gang prevention, intervention and/or suppression services are available in Tacoma neighbor-hoods that are disproportionately impacted by gang crime.

Far too many experience poor mental health and lack access to mental services.

Suicide and Suicide Attempts, Adolescents 10-17 years old. Rate per 100,000. Tacoma 2003-2014



- Many adolescence struggle with stress, social isolation and poor mental health.
- Tacoma youth report higher rates of drug use and exposure to violence than their peers across Washington.

Mental Health and Wellbeing



1 Health and Safety

- A. Improve neighborhood safety.
- B. Improve overall health.

2 Human and Social Needs

- B. Improve services to youth and vulnerable populations.

2015-19

Human Services Strategic Plan

1 Meet Basic Needs of Tacoma Residents

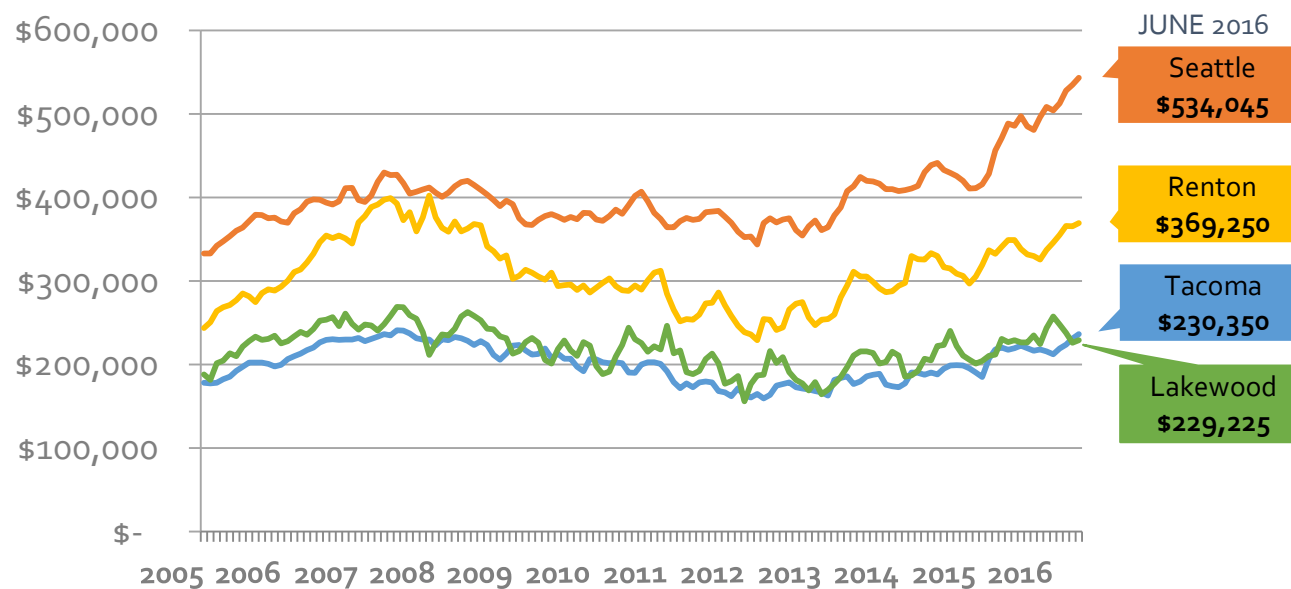
- **Housing Stability.** Prevention of and pathways out of homelessness.
- **Food Security.** Access to healthy food and optimal nutrition.
- **Safety.** Reduced interpersonal and intimate violence/abuse.

4 Enhance Mental Health/Substance Use Disorder Services

- **Youth Mental Health.** Increase support for youth mental health and/or substance use disorders.
- **Co-occurring disorders.** Address the unmet needs of at risk/vulnerable populations and those struggling with mental illness, substance use and/or intellectual and developmental disabilities (IDD).
- **Domestic Violence.** A reduction of the mental health impacts resulting from interpersonal and intimate violence/abuse.
- Reduce chronic homelessness.

Tacoma has a broad range of affordable housing options. However, many residents struggle to secure stable, quality housing.

Median Sales Price Jan 2005 - June 2016

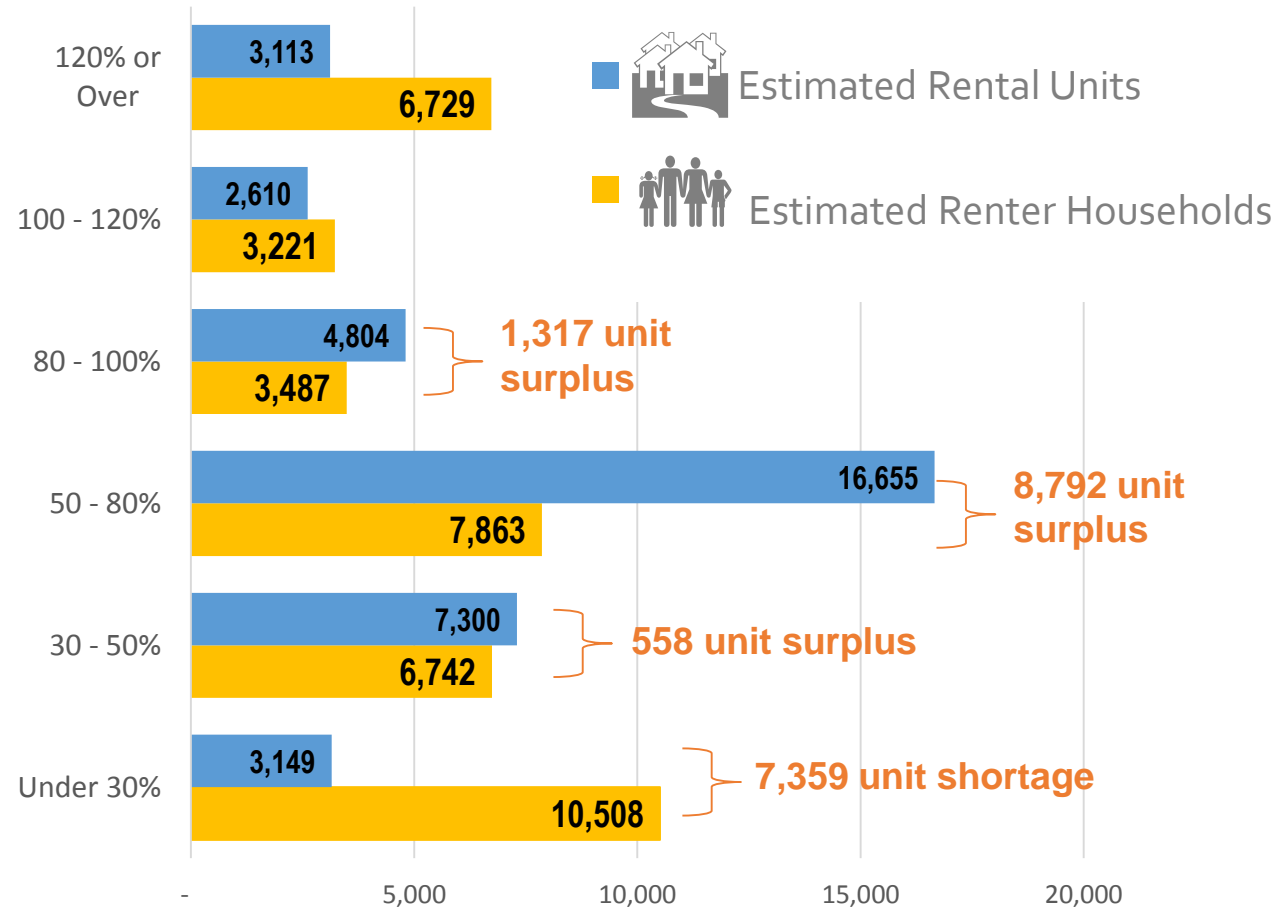


Source: Zillow, 2016; BERK, 2016.

- Housing costs are lower in Tacoma than in other central Puget Sound cities.
- Tacoma has a high percentage of renters, many of which have very low incomes.

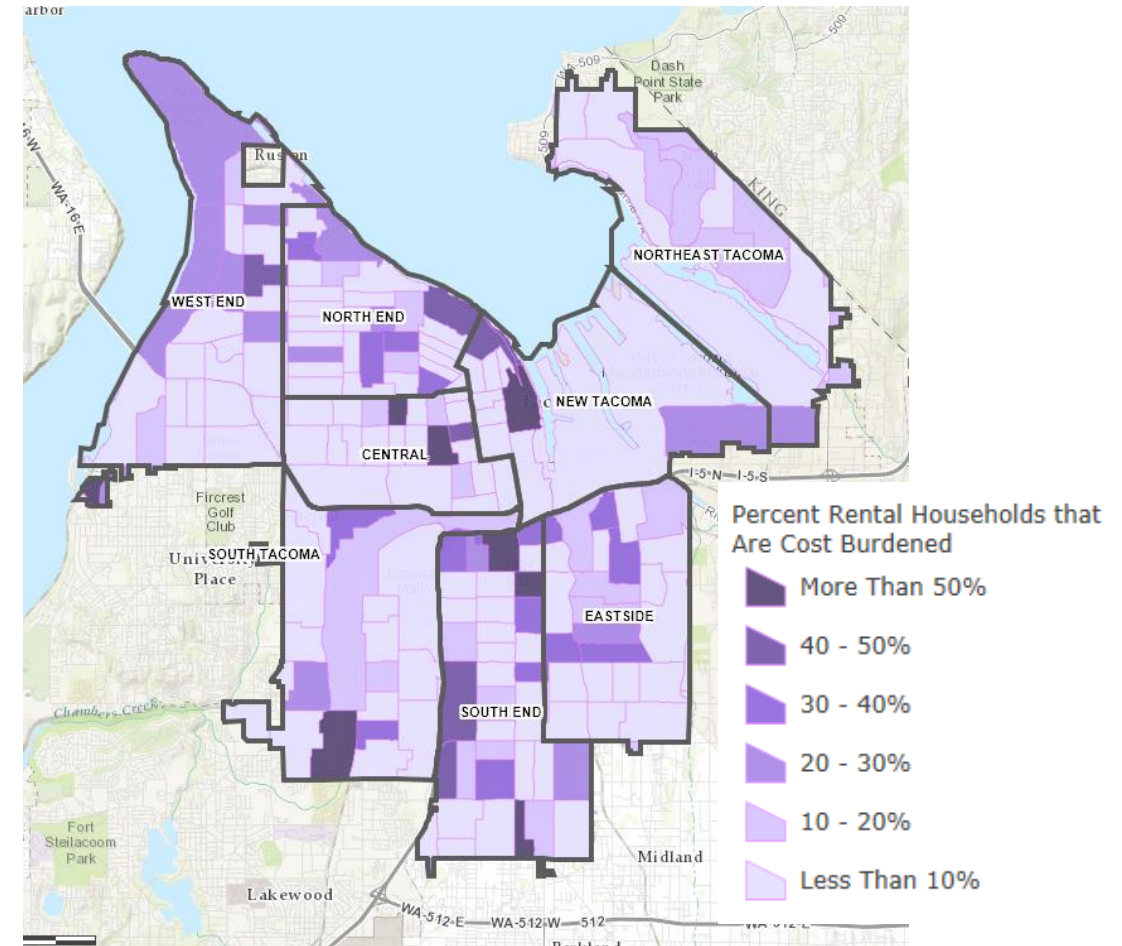
.... driving a gap in meeting the affordable housing need.

Gap Analysis of Rental Households by Income and Rental Housing by Gross Rent Tacoma 2014



Source: ACS, 2016; BERK, 2016.

Rental Households that are Housing Cost Burdened, 2014



Source: ACS, 2015; BERK, 2016.

Limited Income and Household Stability



2 Human and Social Needs

- A. Increase housing security.
- C. Reduce poverty.

3 Economic Vibrancy and Employment

- A. Increase the number and quality of jobs throughout Tacoma.
- B. Diversify Tacoma's living wage business base.

4 Education and Learning

- A. Close the education achievement gaps.
- B. Prepare people to succeed in Tacoma's workforce.

2015-19

Human Services Strategic Plan

1 Meet Basic Needs of Tacoma Residents

- **Housing Stability.** Prevention of and pathways out of homelessness.

3 Increase Employability, Self-Determination and Empowerment for Adults

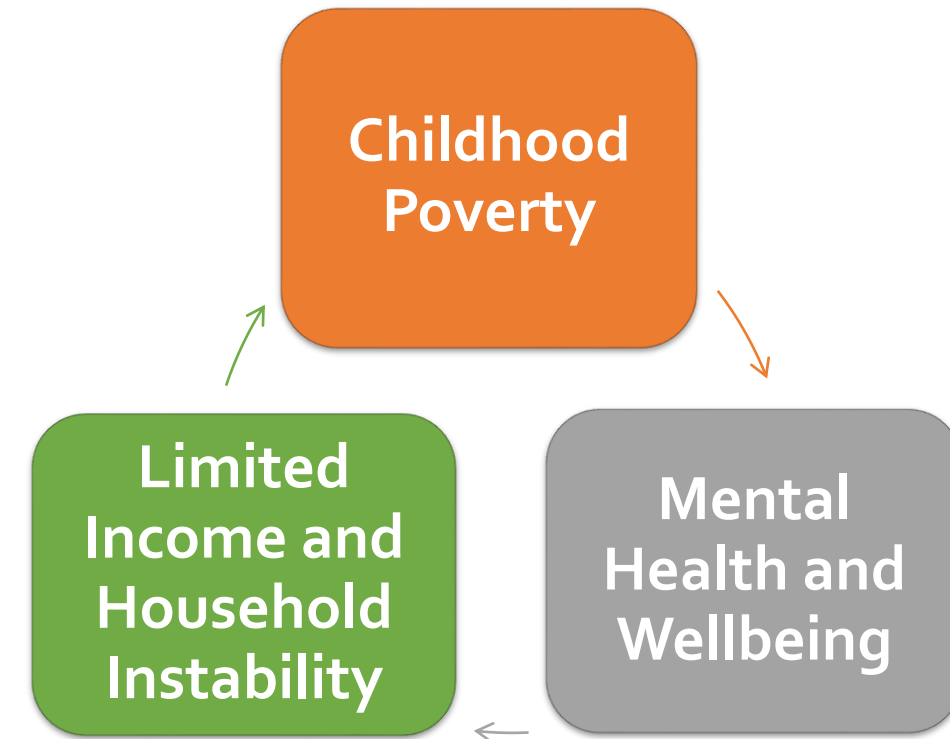
- **Workforce Development.** Education, training, and individualized employment support services.
- **Self-determination and Empowerment** for individuals to build upon their strengths.

Conclusion

FINDINGS

- **Childhood poverty** is a significant driver of many of the challenges faced by youth and adults such as mental health, social development, academic achievement, economic opportunity and long term household stability and economic self-determination.
- Tacoma youth need **emotional and social support**.
- Household stability is undermined by the gap between resident purchasing power and available housing. **Improving access** to housing will be necessary. Also, preventing exploitation of renters will improve housing stability.

Meeting human service needs for families and children living in poverty can improve long-term outcomes and prevent future hardship.



GOING FORWARD...

- **Over the next biennium, staff will use this information to**
 - **Continue to build systems for household stability**
 - **Assess future service levels**
 - **Strengthen areas of prevention & sustainability**
 - **Assist with preparing “Issue Statements”**
 - **Better define problem**
 - **Clarifies City’s investment priority**

GOING FORWARD...

Address services gaps:

- **Social Wellness Programs**
 - Strengthen efforts around substance use disorder
 - Opioid, Methamphetamine, Synthetic Marijuana
- **Opportunity & Achievement Programs**
 - Enhance workforce development opportunities
 - Maritime, Aerospace, Information Systems

NEXT STEPS

- **Finalize CNA document**
- **Distribute to provider network and community**
- **Study Session- August 2016**
- **Application deadline- August 29, 2016**
- **Review and Evaluation-September 2016**
- **Recommendations to CVS- October 2016**
 - Recommendations for Sustained Contracts- October 13, 2016
 - Recommendations for Homelessness & Household Stability- October 27, 2016