

# Amtrak Station Design and Construction Update

City of Tacoma  
Planning and Development Services

City Council Study Session  
January 31, 2017



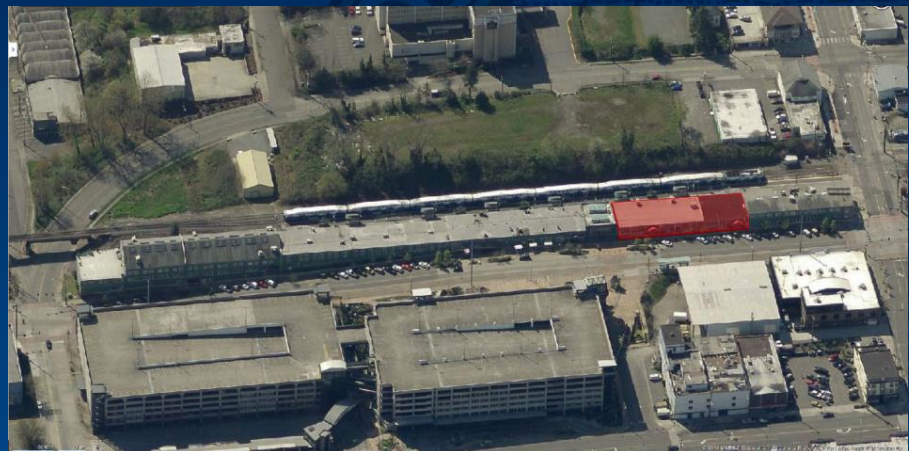
# Presentation Outline

- Amtrak Station Relocation and Design
- Historic Interpretive Display
- Next Steps



# New Amtrak Station at Freighthouse Square

- 10,000 sq. ft new building within existing building
- Designed in conjunction with CAC and city officials
- Community input and consensus crucial to design success
- Federal deadlines must be met
- Construction started in 2016
- Station opens in 2017



# Station Design: Façade, Interior Consensus

- Open, welcoming façade to help reinvigorate entire Dome District
- Wood columns reflect Tacoma's history
- Row of opening tri-fold doors creates indoor/outdoor public space
- Visual transparency for clear wayfinding
- Arcade connects through most of building

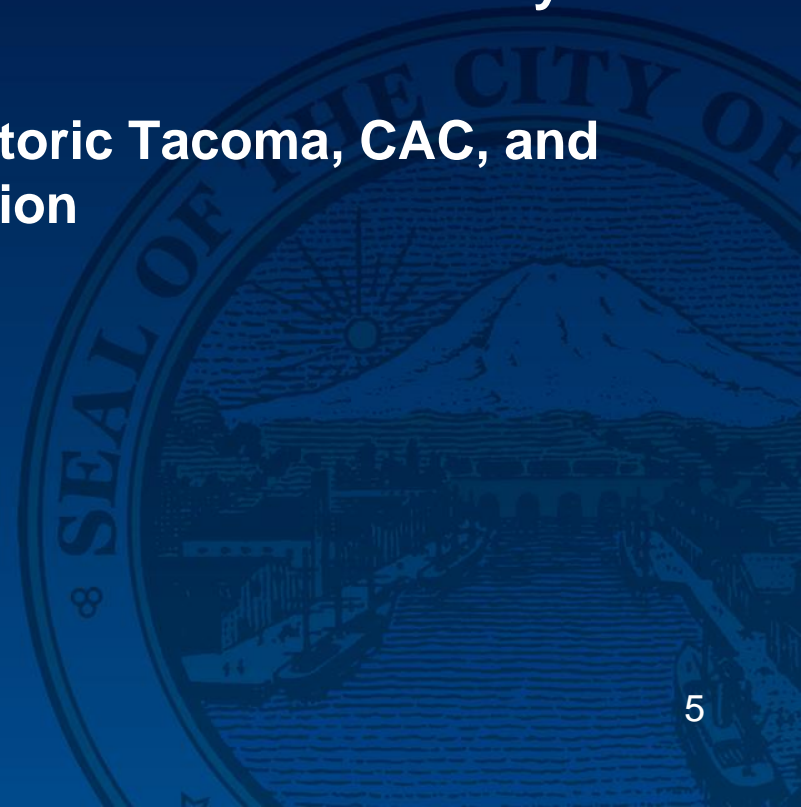


Arcade looking west



# Historic Interpretive Display – *Work Process*

- Commissioned by Historic Tacoma
- Revised and Improved by the Amtrak Citizens Advisory Committee (CAC)
- Recommended to WSDOT by Historic Tacoma, CAC, and Dome District Business Association



# Historic Interpretive Display – *Thought Process*

- Connect to Tacoma's railroading past.
- Freighthouse Square was initially a Milwaukee Railroad warehouse.
- The Milwaukee Railroad's "Hiawatha" was one of the early passenger links from the eastern United States to Tacoma
- Display will become the station's main identifier and an iconic marker for visitors and residents.
- Display will depict the Milwaukee Railroad's 1938 "Hiawatha" passenger train's engine at nearly life scale, along with four 10' x 10' railroad-related "windows".

# Historic Interpretive Display – *Rendering*



19 FEET

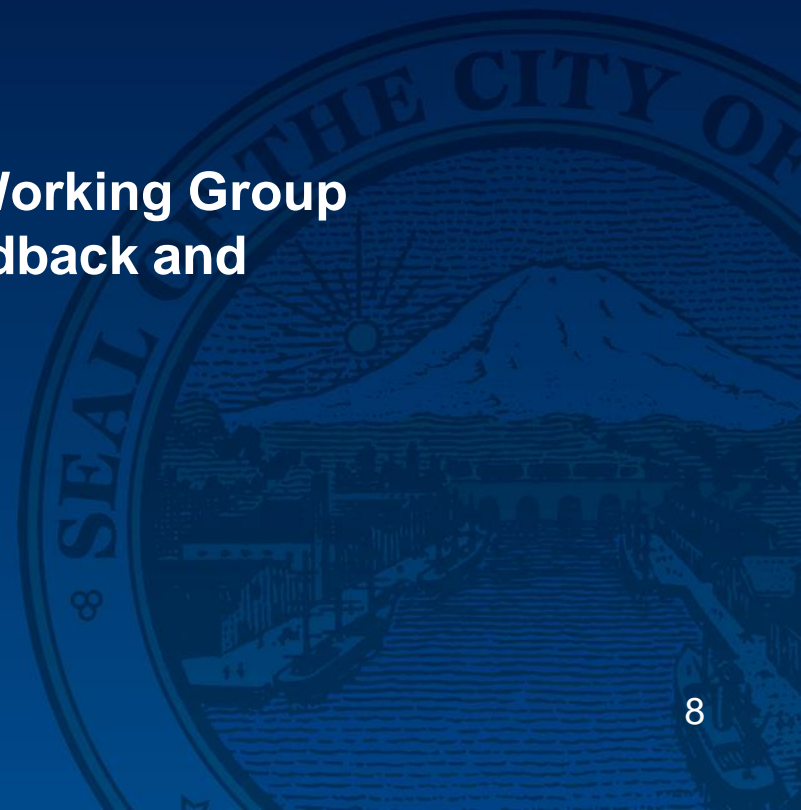
10 FEET

6 FEET



# Next Steps

- **City Council Feedback?**
- **WSDOT contracts with the City to install the Historic Interpretive Display**
- **Installation summer of 2017**
- **Citizens Advisory Committee's Working Group continues to meet to provide feedback and suggestions as needed**





# Amtrak Station Design and Construction Update

City of Tacoma  
Planning and Development Services

City Council Study Session  
January 31, 2017

