

ATTENTION!

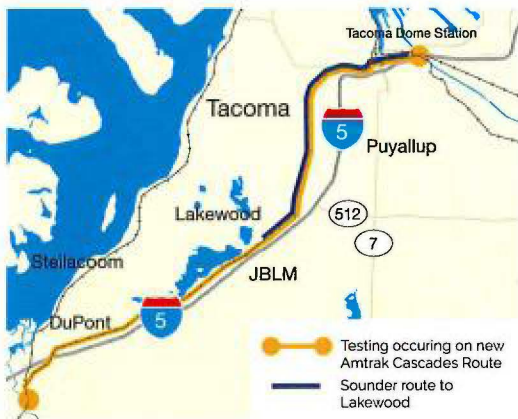


**TRAIN TRACK AND SIGNAL
TESTING IN YOUR AREA**

**MID-JANUARY
THROUGH FEBRUARY 2017**

SAFETY FIRST!

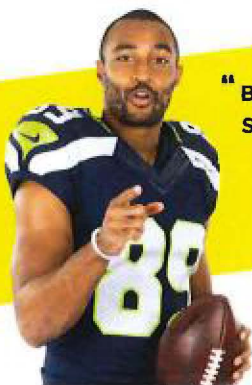
- Trains will be traveling at speeds up to 79 mph
- Trains may come from either direction, day or night
- Wait for crossing arms to go up and/or lights to stop flashing before proceeding
- Obey all signals at all times (pedestrians and vehicles)
- Do not walk on or near the tracks



NEW ROUTE TESTING

Amtrak Cascades is permanently rerouting its tracks through Tacoma, along I-5 between Lakewood, JBLM and DuPont. Testing of the new routes and signals will occur from mid-January through the end of February 2017. During testing, trains will travel at speeds up to 79 mph and come from either direction, any time, day or night. Regular service on the new route is scheduled to begin in fall 2017.

For more information, go to:
wsdot.wa.gov/Rail/Projects



**"Be safe around trains.
Stay back from the tracks!"**
-Doug Baldwin

StayBackFromTheTracks.com



Amtrak

