

Livable City Year

**City Council
Study Session**
August 15, 2017



Livable City Year Team

UW Core Team:

Jennifer Otten, Co-founder and Co-Director

Branden Born, Co-Founder and Co-Director

Anne Wessels, Co-Director

Teri Thomson Randall, Program Manager

City of Tacoma:

Tanisha Jumper, Program Manager, Tacoma 2025

Chris Bell, Management Fellow



What is Livable City Year?

- One year. One city.
- Dozens of UW Faculty and hundreds of students
- Working together to catalyze livability.



What is Livable City Year?

The Vision: Catalytic Learning

- Connects existing university courses
- To imagine, design, and advance existing livability-related projects identified by the city



The UW – City Partnership

- Add value to city efforts
- ‘Expand the conversation’
- A ‘flash mob’ of engagement



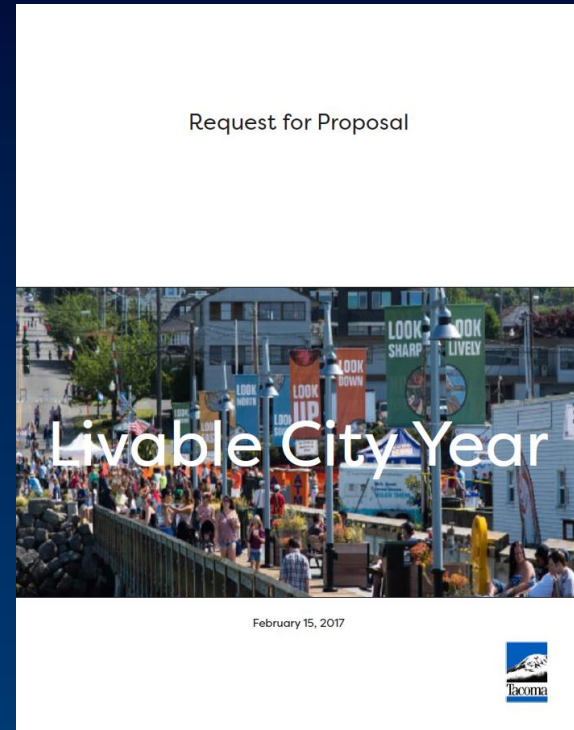
National Model

- First started at University of Oregon in 2009
- Sustainable City Year Program
 - <https://sci.uoregon.edu/content/scyp>
- Now at dozens of institutions across the nation
- Engaging Partners in Communities Network
 - www.epicn.org

How Does it Work?

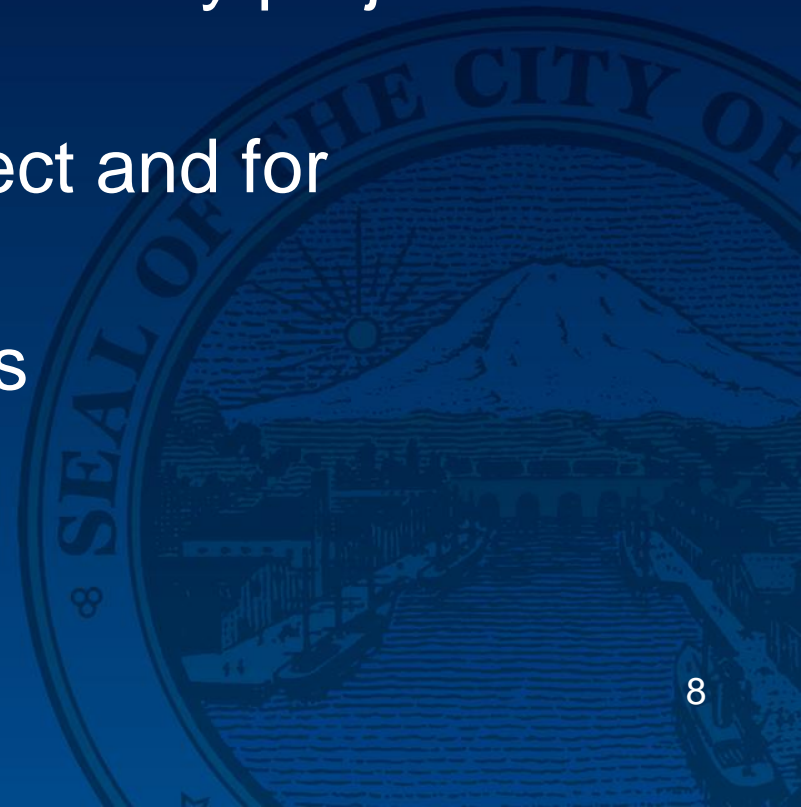
Finding the city partner...

- Buy-in from city leadership
- Projects already in existing work plans or part of strategic planning



How Does it Work?

- Range of classes and work
- Co-create a “scope of work”
 - Created by city and university project leads
 - Purpose, both for project and for course
 - Outcomes/Deliverables
 - Responsibilities
 - Timelines



How Does it Work?

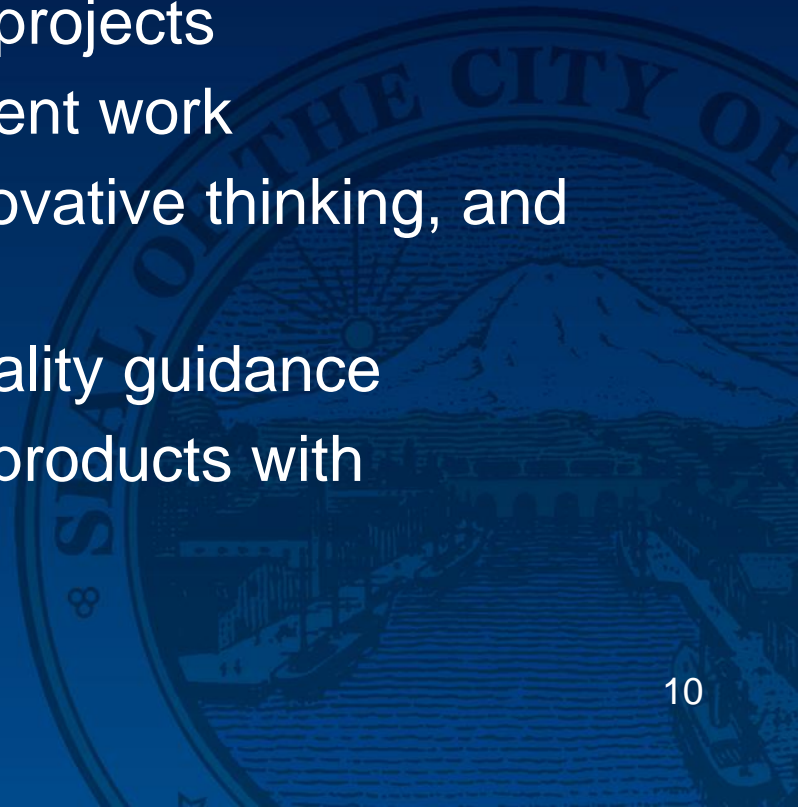
The lifecycle of a course...

- Course/project introduction with city project manager
- Visit(s) to city to see the problem and meet stakeholders
- Work with city project manager throughout the quarter
- Develop deliverables for the city
- Work with LCY to write a final report

How Does it Work?

What LCY provides to the city...

- Continuous contact with LCY support over the life of the partnership, across all projects
- Diversity of courses and student work
- Students provide energy, innovative thinking, and novel solutions
- Faculty, LCY staff provide quality guidance
- LCY reports: consistent final products with graphic design



How Does it Work?

Scale of engagement...

- 15-20+ Projects
- 15-20+ Courses
- 15-20+ Faculty
- Numerous disciplines
- UW Bothell, Seattle, Tacoma
- 150+ students
- 19,000+ hours of student time



How Does it Work?

City funding goes to...

- LCY staff
- LCY faculty directors support
- Final report production: writer, editor, graphic designer, printing
- Teaching materials and supplies
- Site visit travel expenses
- Event expenses
- LCY core support (office, internet, electricity...)



Why be a part of
Livable City
Year?

Benefits
To Students
To Cities
To Faculty
To Private Sector

Benefits to Tacoma

- Increased capacity
- Expanded breadth of conversation
- Test the water (considering riskier solutions)
- Move projects forward
- Material for future grants submission/consultant partnerships
- “Energy”

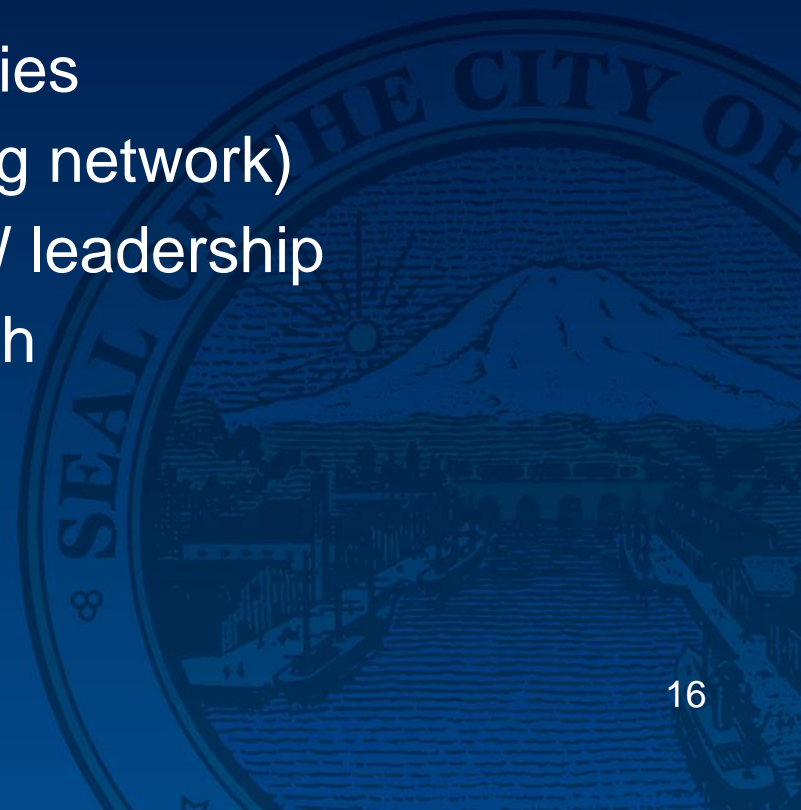


Benefits to Students

- Real-world experience
- Engagement with politics and public service
- Opportunity to see how course concepts play out
- Experience with possible future job options
- Publication and presentations
- Presentation to city council and staff
- Engage in a university-wide partnership

Benefits to Faculty

- Value added to existing course
 - Real-world projects, engaged partners, press exposure, reports, funds for course enhancement
- Public service engagement
- External relationships with cities
- Internal relationships (learning network)
- Highly visible project with UW leadership
- Platform for research/outreach



Benefits to Private Sector

- Groundwork for projects
- Testing approaches (feasible/political)
- Connecting with university (research/students)



Livable City Year

Check out lcy.uw.edu for more information

Branden Born
Co-Founder and Co-Director, UW
Livable City Year
Associate Professor,
Urban Design and Planning
bborn@uw.edu, 206-543-4975

Jennifer Otten
Co-Founder and Co-Director, UW
Livable City Year
Assistant Professor, School of Public Health
jotten@uw.edu, 206-221-8233

Anne Wessels
Co-Director
Livable City Year
Associate Professor,
Urban Studies Program
atw5@uw.edu, 253-692-4319

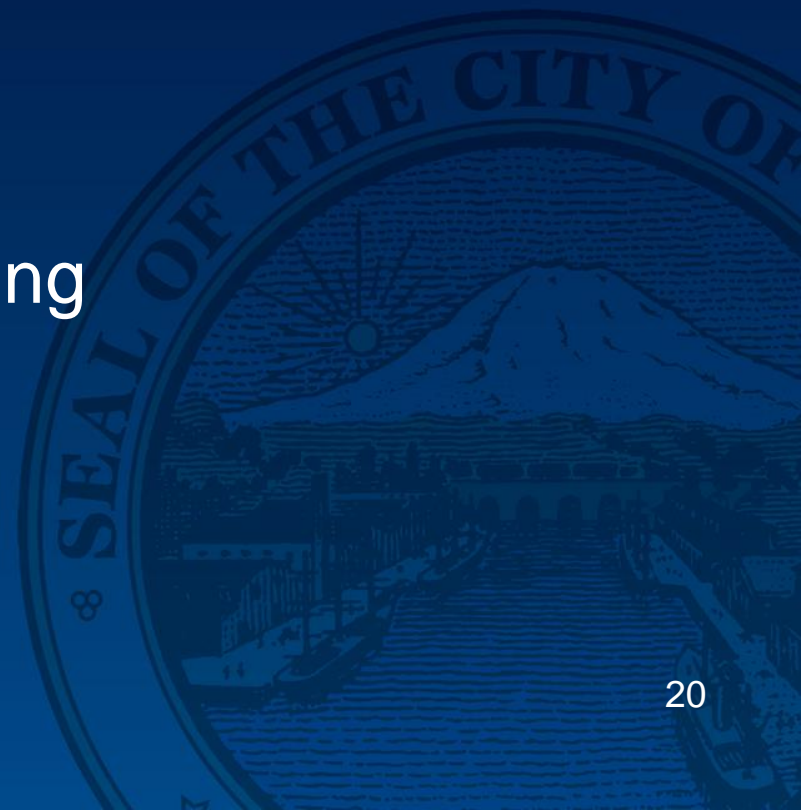
Teri Thomson Randall
Program Manager,
UW Livable City Year
uwlcy@uw.edu, 206-221-9240

Tacoma's Proposal



Project Areas

- Government Performance and Accountability
- Health and Equity
- Communications
- Economic Development
- Urban Design and Planning



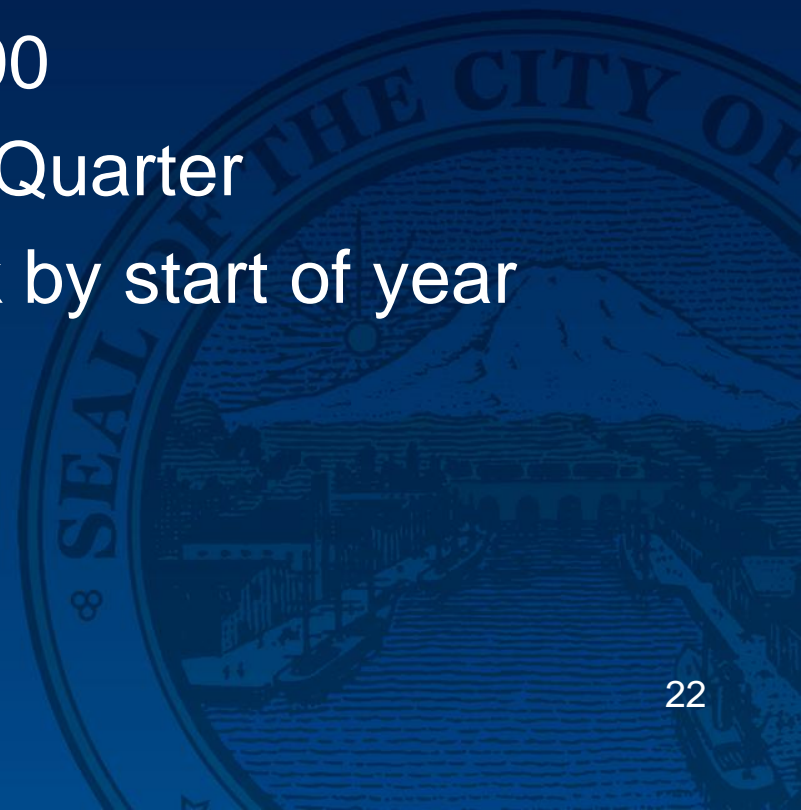
Broad Participation

- City Manager's Office
- City Attorney's Office
- Planning and Development Services
- Environmental Services
- Neighborhood and Community Services
- Community and Economic Development
- Public Works
- Fire Department
- Finance Department
- Tacoma Power
- Information Technology



Next Steps

- Request for Resolution to approve contract:
 - 25-30 projects
 - Not to exceed \$350,000
- Project selection for Fall Quarter
- Complete Scope of Work by start of year
(by mid-September)
- Kick-off Event (October)



Livable City Year

A Collaboration between the University of Washington and the City of Tacoma

Questions?

City Council
Study Session
August 15, 2017