

Neighborhood Business Districts Economic Activity Report

City of Tacoma

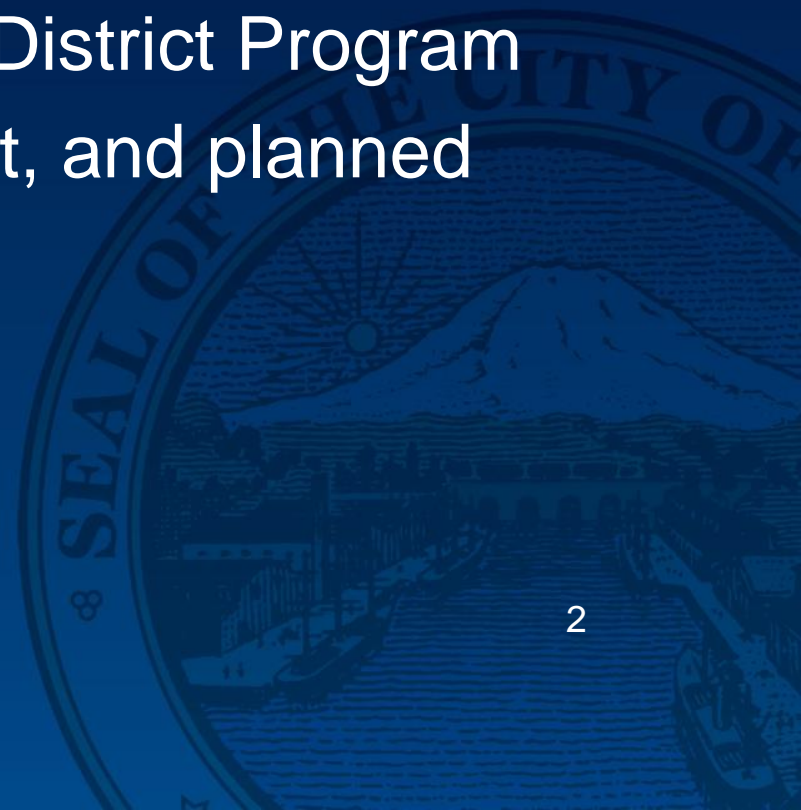
Community and Economic Development

**Economic Development Committee
January 30, 2018**



Overview

- Neighborhood Business Districts element of “Economic Development Strategic Framework Plan”
- Neighborhood Business District Program
- Update on recent, current, and planned activities



Economic Development Strategic Framework

- Business District and Neighborhood Revitalization
 - Strengthen **retail**, maximize revenue and neighborhood livability
 - Create walkable, vibrant **environment** to attract people
 - Support **adaptive reuse and infill development**

ED Framework: RETAIL

Lincoln

- Manic Mermaid



ED Framework: RETAIL

South Tacoma

- Around the Corner Café
- Robs Trains & Hobbies
- Ludusport Academy & Gym



ED Framework: RETAIL

Stadium

- Jimmy Johns
- Orange Theory Fitness (coming soon)



ED Framework: RETAIL

Hilltop - Zodiac Supper Club

Ruston Pt Defiance – Ruston Family Chiropractic



ED Framework: RETAIL

6th Ave

- Soap & Clay
- The Looking Glass Boutique
- Ruston Mercantile
- Pizza Press



ED Framework: RETAIL

Old Town

- Anthem Coffee
- Old Town Fitness Studio



ED Framework: RETAIL

Proctor

- Envy
- Museum Quality Framing
- Waffle Stop



ED Framework: RETAIL

Proctor (cont.)

- Lapis / Olympia Coffee Roasting Co.
- Tacoma Yoga
- Proctor Mercantile



ED Framework: RETAIL

- Fern Hill - Tibbitts



ED Framework: ENVIRONMENT

- Lincoln Streetscape



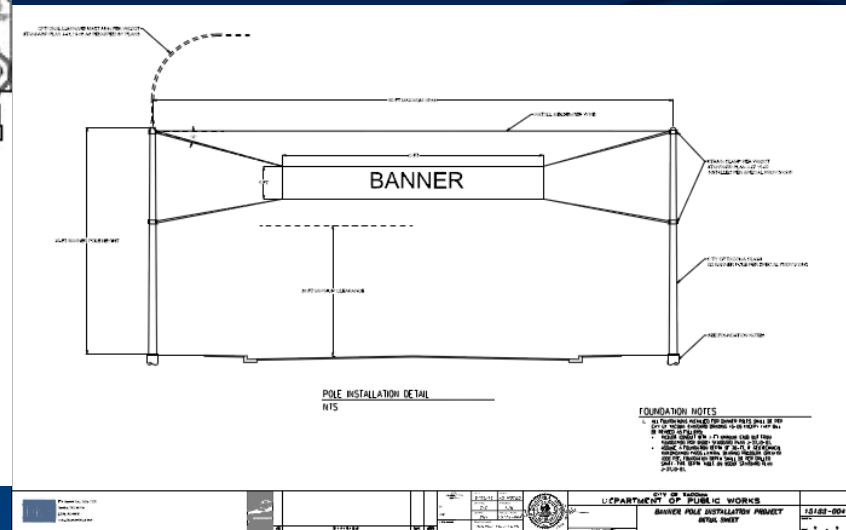
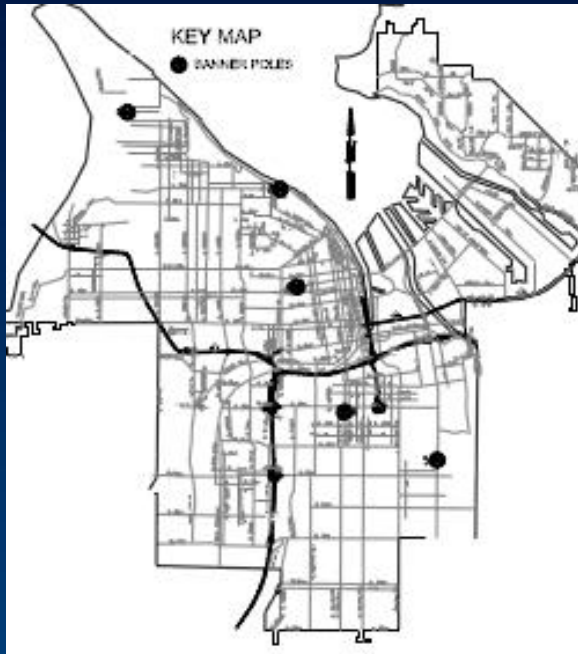
ED Framework: ENVIRONMENT

- Pedestrian Waste Cans
 - 6th Ave, Hilltop, Stadium



ED Framework: ENVIRONMENT

■ Over-the-Street Banner Poles



ED Framework: ENVIRONMENT

- Pt Defiance Roundabout



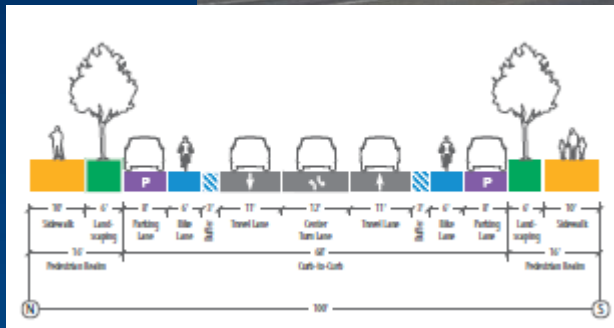
ED Framework: ENVIRONMENT

- Amtrak Station
- Amtrak and Sounder platforms
- Sound Transit trestle
- E 25th streetscape & conversion to one-way



ED Framework: ENVIRONMENT

- Dome - Puyallup Avenue Corridor Design



ED Framework: ADAPTIVE REUSE & INFILL DEVELOPMENT

- Stadium Apartments



ED Framework: ADAPTIVE REUSE & INFILL DEVELOPMENT

- Madison 25



ED Framework: ADAPTIVE REUSE & INFILL DEVELOPMENT

- Koz Development



ED Framework: ADAPTIVE REUSE & INFILL DEVELOPMENT

- Pierce Transit TOD



ED Framework: ADAPTIVE REUSE & INFILL DEVELOPMENT

- McKinley - The Station Artist Lofts



ED Framework: ADAPTIVE REUSE & INFILL DEVELOPMENT

- Valhalla Hall



ED Framework: ADAPTIVE REUSE & INFILL DEVELOPMENT

- Hilltop – 824 Martin Luther King Jr Way

Mercy Conceptual Rendering



Koz Conceptual Rendering

Development Site

ED Framework: ADAPTIVE REUSE & INFILL DEVELOPMENT

- Lincoln – Starbucks
- Tacoma Narrows – Mixed-use project
 - Rezone for car wash



Neighborhood Business Districts Economic Activity Report

City of Tacoma

Community and Economic Development

**Economic Development Committee
January 30, 2018**

