



ST3 – Tacoma Dome Link Extension

City of Tacoma | Planning & Development Services
Sound Transit

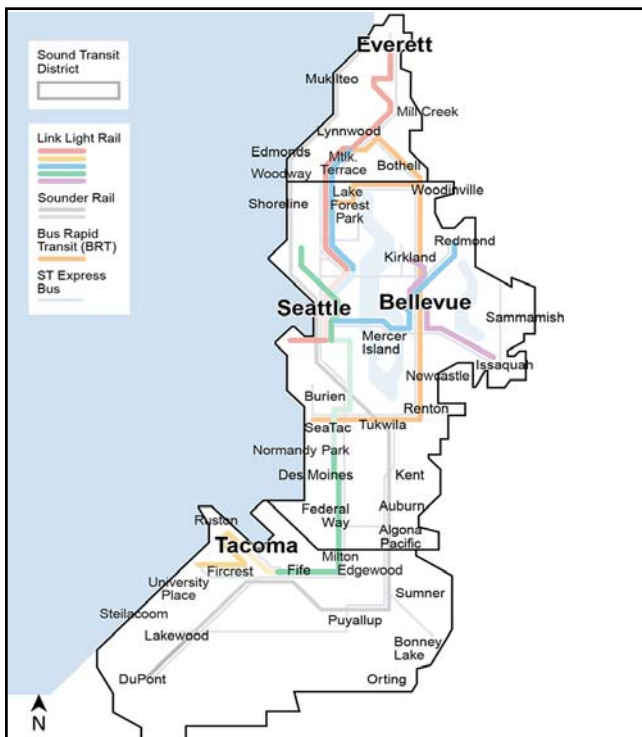
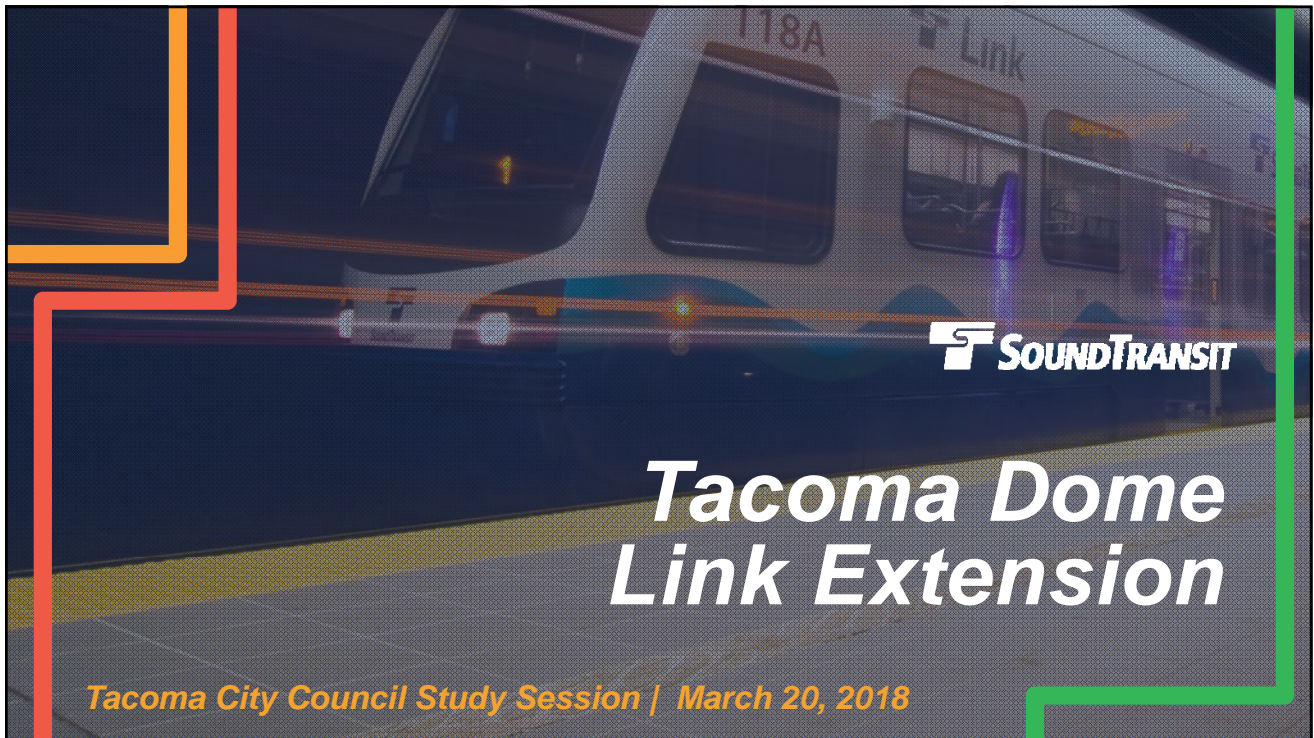
City Council Study Session
March 20, 2018
ITEM #4



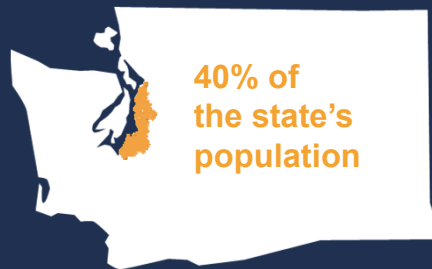
OVERVIEW



- Sound Transit 3 Package
- Tacoma Dome Link Extension (TDLE)
 - Project Overview and Timeline
- Partnership Agreement
 - Commitment to collaboration and communication
 - Early input on local goals, priorities, and issues
- Community Engagement
- Next Steps



Sound Transit District





System Expansion

Link Light Rail

- 116-mile regional system
- 49 new stations
- Connecting Tacoma, Everett, Bellevue, Redmond, Issaquah, Ballard and West Seattle

Tacoma Link extensions to Hilltop and TCC

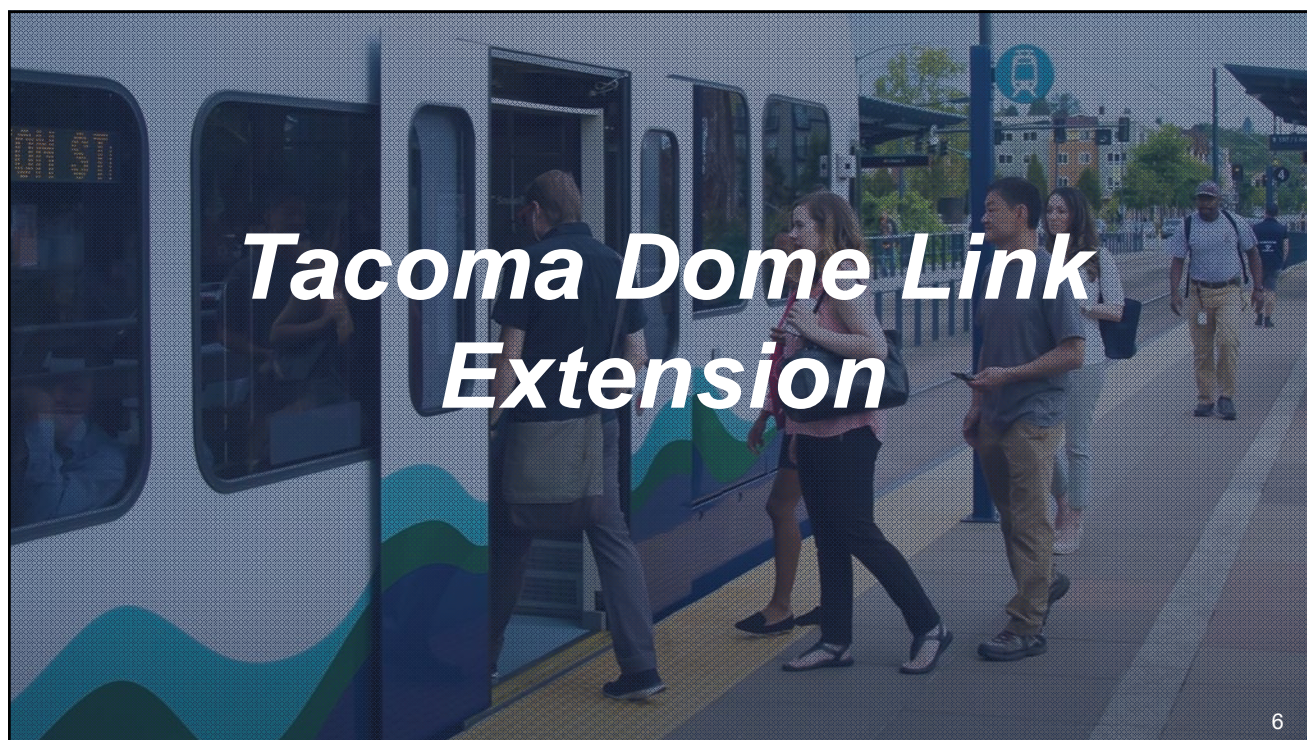
- 12 new stations

Sounder south commuter rail

- Parking and access improvements
- Platform extensions
- Expansion of service, 40% capacity increase

Bus

- Bus Rapid Transit serving 12 cities, in the I-405, SR 522 and SR 518 corridors
- Bus-on-Shoulder opportunities: I-5, I-405, SR 518, SR 167
- Contribution to Pierce Transit's BRT on Pacific Ave./SR 7





Tacoma Dome Link Extension

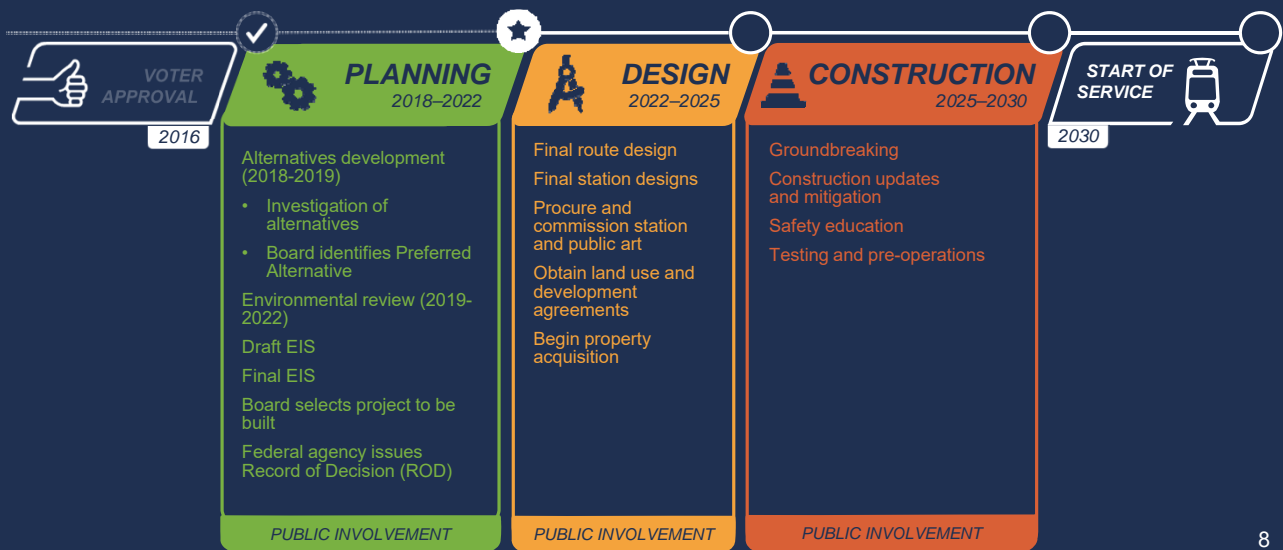
Federal Way Transit Center to Tacoma Dome

- **Length:** 9.7 miles
- **Stations:** 4 (2 parking garages)
- **Daily Project Riders:** 27,000-37,000 (2040)

Operations and Maintenance Facility – South along corridor

7

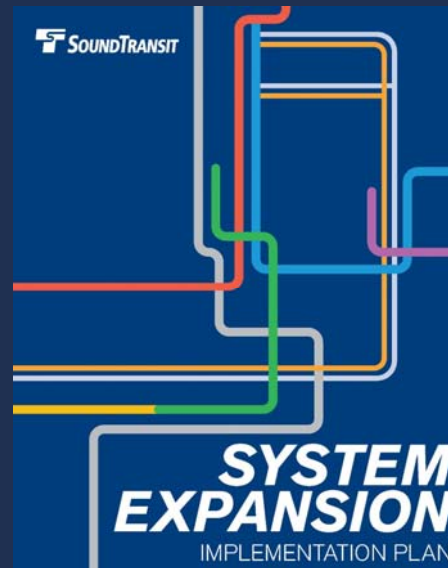
TDLE project timeline



8

New approach to project development

- › Enhance commitment to partnership, community engagement, collaboration, transparency and accountability
- › Apply innovative ideas and lessons learned to streamline project delivery



9

Partnering Agreements

- Agreements include commitments on:
 - Collaborative community engagement to build consensus
 - Shared environmental review documents
 - Streamlined permit review and processing
 - Assign designated representatives from each agency to the project
- Separate agreements between corridor jurisdictions
- Discussing a potential agreement with the Puyallup Tribe of Indians

10

Partnering Agreement

- ✓ Designated Representatives
- ✓ Scope, Schedule, Budget
- ✓ Project Definition
- ✓ Community Engagement
- ✓ Permit Streamlining
- ✓ NEPA / SEPA
- ✓ Coordination on Planned Projects
- ✓ Staffing

11



12

Community Engagement



Community Updates



Stakeholder Group



Station and Operations & Maintenance Facility Area Workshops



Interagency Group



Elected Leadership Group



Tribe and City Council Coordination



Sound Transit Board

Early scoping

› Early scoping is an opportunity to:

- Learn about the **project background, timeline** and **how to stay informed and involved**
- Provide input on the **route, stations, potential alternatives, benefits and impacts**
- Provide input on the potential location of the **Operations and Maintenance Facility** in the south corridor

Process and schedule

- Early scoping **comment period**: April 2 to May 3
- Ways to submit early scoping comments:
 - Fill out a comment card at an open house
 - Tacoma - Tuesday, April 17
 - Federal Way - Wednesday, April 18
 - Fife - Tuesday, April 24
 - Visit: **tdlink.participate.online** (active April 2)
 - Email: **tdlink@soundtransit.org**
 - Call: 206-903-7118 (active April 2)
 - Mail to: Tacoma Dome Link Extension
c/o Steven Kennedy, 401 S. Jackson St. Seattle, WA 98104



15

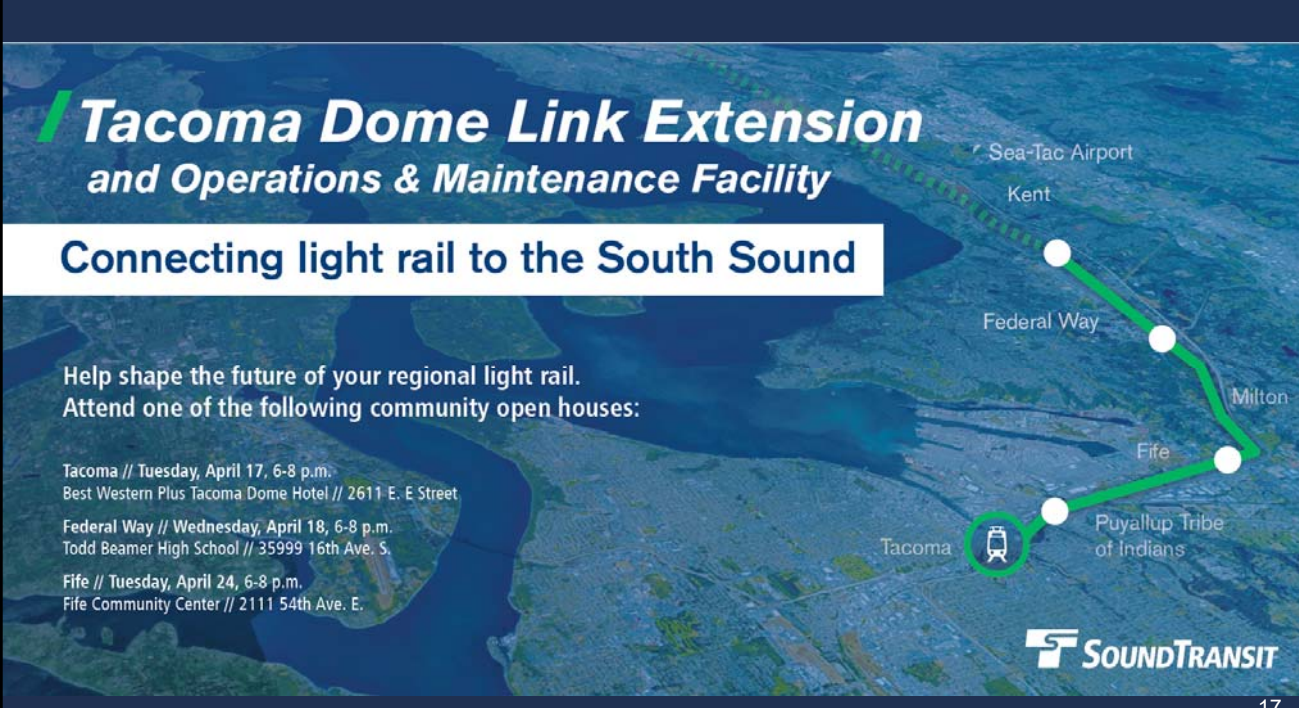
Notifications

- Postcard
- Email listserv
- Press releases
- Posters
- Station advertising
- Print and online ads
- Website
- Social media
- Notice to SEPA officials



Commitment to accessibility and translation services

16



Tacoma Dome Link Extension
and Operations & Maintenance Facility

Connecting light rail to the South Sound

Help shape the future of your regional light rail.
Attend one of the following community open houses:

Tacoma // Tuesday, April 17, 6-8 p.m.
Best Western Plus Tacoma Dome Hotel // 2611 E. E Street

Federal Way // Wednesday, April 18, 6-8 p.m.
Todd Beamer High School // 35999 16th Ave. S.

Fife // Tuesday, April 24, 6-8 p.m.
Fife Community Center // 2111 54th Ave. E.

Sea-Tac Airport
Kent
Federal Way
Milton
Fife
Tacoma
Puyallup Tribe of Indians

SOUNDTRANSIT

17



NEXT STEPS

Partnership Agreement

- City Council Resolution – April 10
 - Commitment to collaboration and communication
 - Early input on local goals, priorities, and issues

18

EARLY INPUT

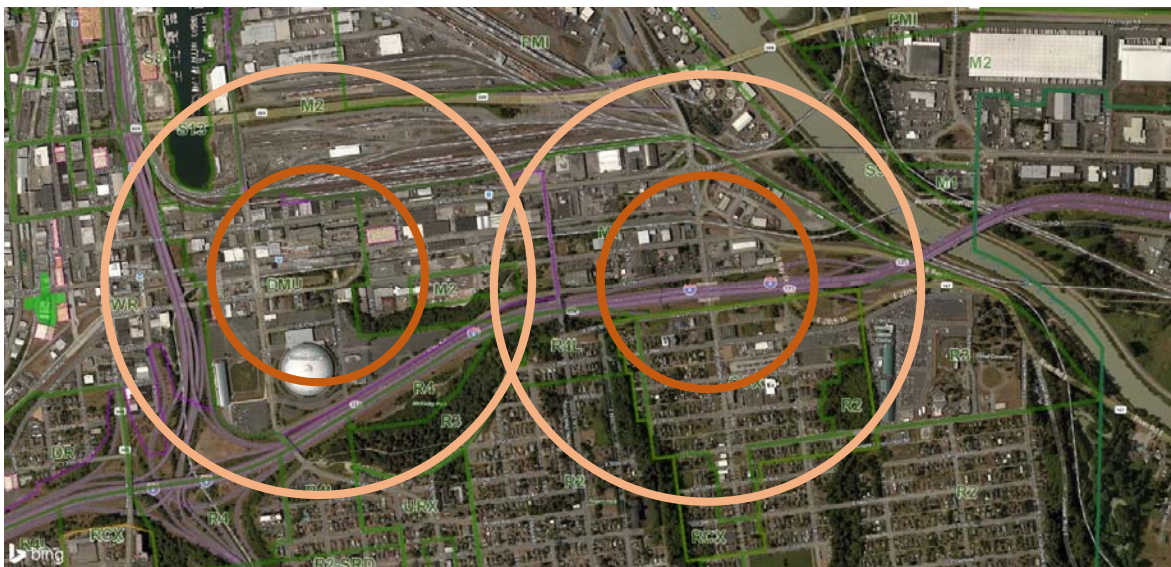


• IPS Committee and Planning Commission

- Project needs to balance regional and local goals
- Consider this in the overall context of the system
- Involvement of the Puyallup Tribe is key
- “Early and often” outreach is essential, especially for early consensus
- Coordination with local plans and policies is critical
- Alternatives Analysis must be broad enough; how to best meet goals
- Effective connection to the Eastside is very important
- Equity and environmental mitigation need to be key considerations
- Design needs to facilitate future expansions
- Interested in how the schedule might be compressed

19

POTENTIAL STATION AREAS





Questions?

soundtransit.org/tdlink ➔



21



ST3 – Tacoma Dome Link Extension

City of Tacoma | Planning & Development Services
Sound Transit

City Council Study Session
March 20, 2018
ITEM #4



Slide 21

RO2

Emily - can we have a "contact us" slide that we always use with the website, email and phone number
Rother, Olivia, 1/17/2018