



Tacoma Dome Link Extension

Spring 2018

Project overview

The Tacoma Dome Link Extension (TDLE) is part of the 116-mile voter-approved light rail system expansion that extends regional light rail approximately 9.7 miles from the Federal Way Transit Center to the Tacoma Dome Station area. The project travels through the cities of Federal Way, Milton, Fife and Tacoma, and the Puyallup Tribe of Indians Reservation. The project also includes an operations and maintenance facility (OMF) in either South King County or Pierce County.

★ Planning phase

Alternatives development

Benefits

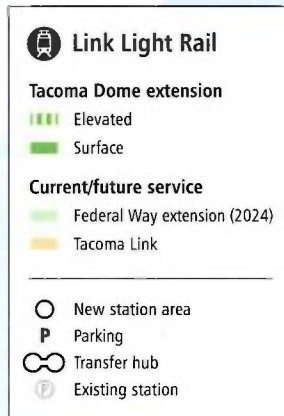
- › 9.7 miles of fast, reliable light rail connections to dense residential and job centers throughout the region.
- › 4 new light rail stations: South Federal Way, Fife, East Tacoma and Tacoma Dome.
- › Parking garages at the South Federal Way and Fife stations, each with approximately 500 stalls.
- › Average projected TDLE daily riders by 2040: 27,000-37,000.
- › Open for service in 2030.

Definition of a representative project

For projects in the voter-approved system expansion, Sound Transit produced "representative projects" identifying the mode, station locations and related features, such as an OMF. The TDLE representative project formed the basis for the project's scope, schedule and budget.

Tacoma Dome Link Extension and OMF South*

(Representative project per ST3 Plan)



Note: map not to scale



Representative project showing transit mode, route and general station locations per ST3 Plan. Final project may reflect refinements.

*Operations and Maintenance Facility (OMF) South is also being located in the south corridor (South King or Pierce counties) to support the south corridor and the entire Link system expansion.



Fast and frequent service to destinations

- › Federal Way to CenturyLink Field in **45 minutes**.
- › South Federal Way to Tacoma Dome Station in **20 minutes**.
- › Fife to Tacoma Dome Station in **six minutes**.
- › Tacoma Dome Station to Sea-Tac Airport in **35 minutes**.



Tacoma Dome Link Extension

Project background

Tacoma Dome Link Extension (TDLE) will expand the Link light rail system from the Federal Way Transit Center to connect the South Sound to the regional light rail system. Roadway congestion is increasing on the major highways in the South Sound, and existing transit capacity does not meet the current and future demand. South Sound residents and communities need better access to the rest of the region, and TDLE is part of the solution. In addition to connecting communities to the regional network, TDLE will also help the state and the region reach environmental and sustainability goals.

Two new Tacoma projects: What's the difference?



Tacoma Dome Link Extension



- Connects to stations throughout the region, like the Sea-Tac Airport, downtown Seattle and University of Washington.
- Operates in its own right of way, offering fast and reliable travel times 20 hours a day, seven days a week.
- Open for service in 2030.



Hilltop Tacoma Link Extension



- Connects more Tacoma neighborhoods to the existing 1.6-mile light rail line between the Theater District and the Tacoma Dome.
- Operates at the street-level for approximately 8-16 hours a day, seven days a week.
- New extension to Hilltop District open for service in 2022.

Regional light rail 101



Service is available from 5 a.m.-1 a.m.



Link trains run every 6, 10 or 15 minutes depending on the time of day and location.



Adult fares currently range from \$2.25 to \$3.25 depending on how far you travel.

Each Link car can hold...



2-4 bicycles



4 wheelchairs



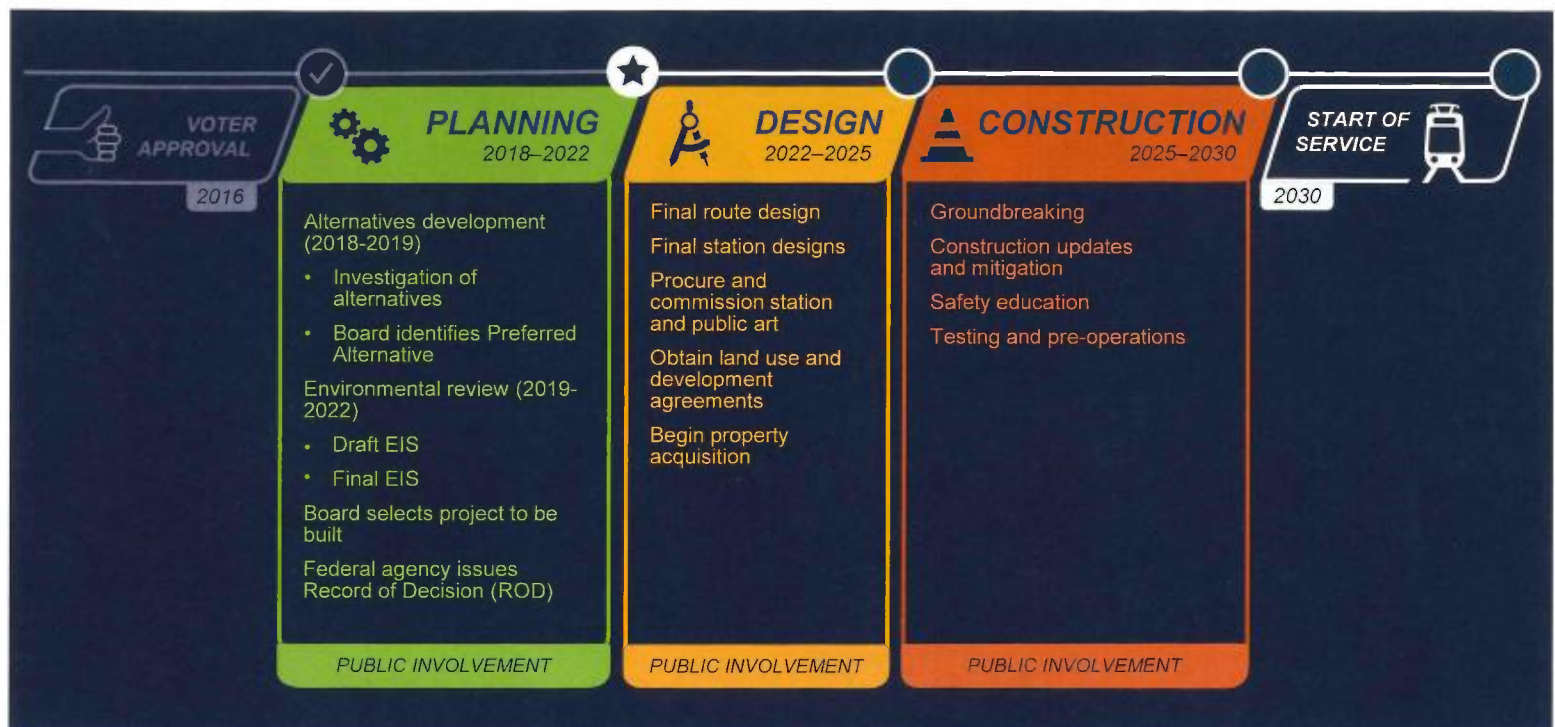
200 riders



Multiple suitcases

TDLE schedule

TDLE is currently in the planning phase, expected to last until 2022. As a part of the planning phase, the Sound Transit Board will select a preferred route and stations based on technical analysis and engagement with tribal governments, elected officials, stakeholders and the community, expected by mid-2019. Following that planning, the team will begin designing the project using the preferred route and stations. In 2025, construction is expected to begin, with service expected to start in 2030.



Operations and Maintenance Facility

An operations and maintenance facility (OMF) will be built in either South King County or Pierce County to serve the south corridor and support overall system expansion. The regional system will need additional capacity to efficiently operate the long-term light rail vehicle fleet needed to serve South King and Pierce counties.

FUN FACT:

The light rail system is serviced between 1 a.m.–5 a.m.



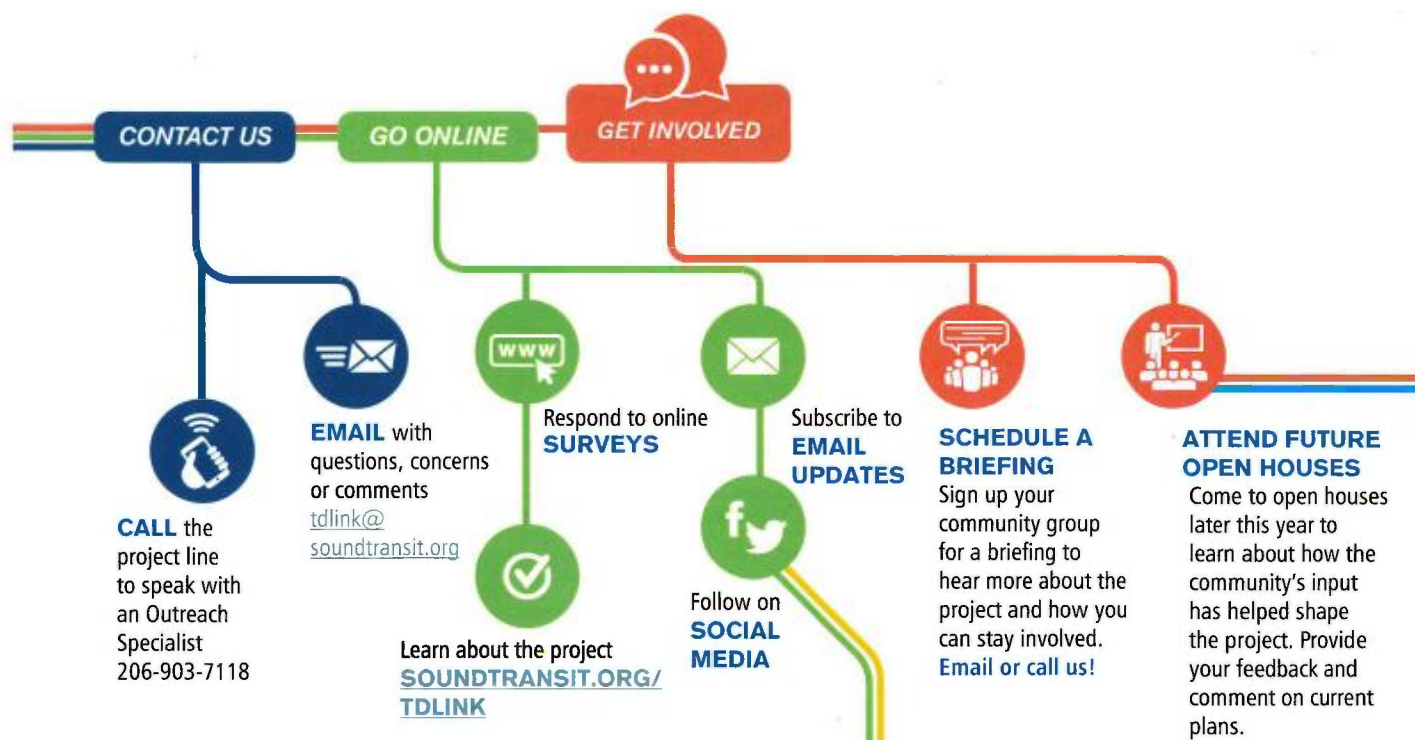
To guarantee a safe, clean and comfortable ride for passengers, Link vehicles must be cleaned every night and regularly pulled out of service to perform routine maintenance.





Tacoma Dome Link Extension

How to stay engaged



Stay informed



Get project updates: soundtransit.org/subscribe



Contact Sound Transit's Community Outreach team

Call: 206-903-7118

Email: tdlink@soundtransit.org



Learn more about the project: soundtransit.org/tdlink

Para información acerca del proyecto llame al: 1-800-823-9230

要瞭解項目資訊，請致電：1-800-823-9230

Звоните 1-800-823-9230, чтобы получить информацию о проекте.

프로젝트에 관한 정보는 다음으로 연락하십시오: 1-800-823-9230





Light rail is coming to the South Sound

Help narrow options for light rail routes and station locations

Join us at an open house or online

Federal Way // Tuesday, Sept. 11, 6-8 p.m.

Federal Way Performing Arts and Event Center // 31510 Pete von Reichbauer Way S.

Fife // Wednesday, Sept. 12, 6-8 p.m.

Fife High School // 5616 20th St. E.

Tacoma // Wednesday, Sept. 19, 6-8 p.m.

Best Western Plus Tacoma Dome Hotel // 2611 E. E St.

Sea-Tac Airport
Kent

Federal Way

Milton

Fife

Tacoma

Puyallup Tribe
of Indians



Tacoma Dome Link Extension
and Operations & Maintenance Facility: South

Sound Transit needs your input!

At open houses last spring, Sound Transit's project team listened to your ideas and developed alternatives. Help us fine-tune your feedback as we:

- Determine which alternatives to study for the light rail route and station locations at **South Federal Way, Fife, East Tacoma and Tacoma Dome** areas.
- Evaluate potential sites between Kent and Tacoma for a new operations and maintenance facility.

Can't make an in-person open house?

➔ Visit the online open house at tdlink.participate.online

Submit comments by Sept. 21 (in-person, online, mail or email)

Online: tdlink.participate.online // **Email:** tdlink@soundtransit.org // **Phone:** 206-398-5453

Mail: Tacoma Dome Link Extension, c/o Sagar Ramachandra, Sound Transit, 401 S. Jackson St. Seattle, WA 98104

Creating transit options in the South Sound: The 9.7-mile Tacoma Dome Link Extension between Federal Way (opening 2024) and Tacoma will provide 35-minute rides between Tacoma and Sea-Tac Airport. Passengers will have easy access to Tacoma Link (including the 2.4-mile Hilltop Tacoma Link Extension), Sounder commuter trains and bus service.

To request accommodations for persons with disabilities or information in alternative formats, call 1-800-201-4900/TTY Relay: 711 or email accessibility@soundtransit.org.

Para información acerca del proyecto llame al: 1-800-823-9230 // Звоните 1-800-823-9230, чтобы получить информацию о проекте // 프로젝트에 관한 정보는 다음으로 연락하십시오: 1-800-823-9230 // សម្រាប់ព័ត៌មានអំពីគម្រោងនេះ សូមទូរស័ព្ទទៅ: 1-800-823-9230 // Để biết tin tức về dự án này, xin gọi: 1-800-823-9230

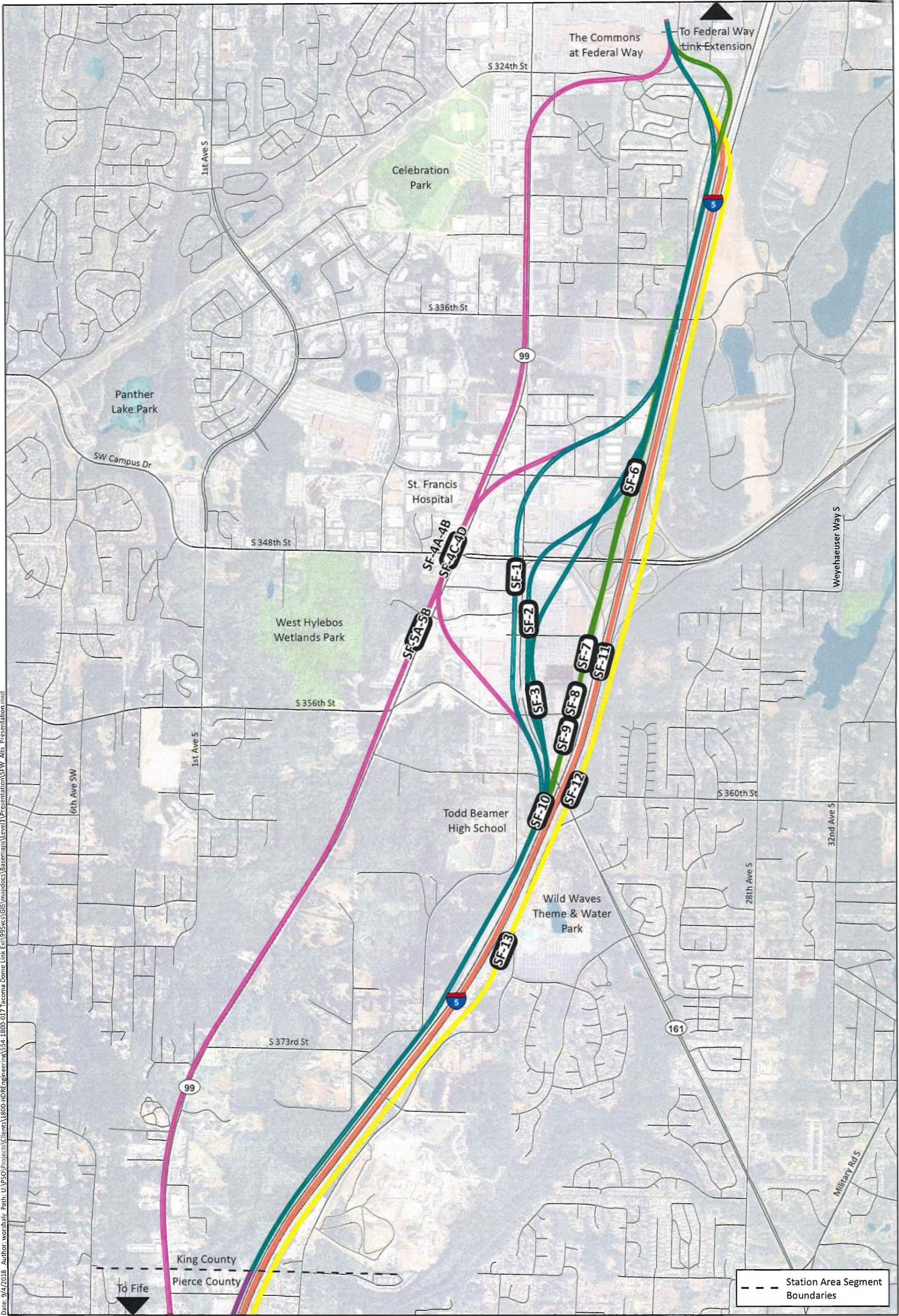


Union Station
401 S. Jackson St.
Seattle, WA 98104-2826

**Get more info and sign up
for project news:**

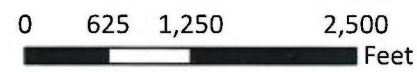
➔ soundtransit.org/tdlink

PRESORTED
STANDARD
U.S. POSTAGE
PAID
SEATTLE, WA
PERMIT NO. 1801



Date: 9/4/2018 Author: worshahy Path: U:\PSCO\Projects\Clients\1800-HDR\Engineering\54-1800-017 Tacoma Dome Link Ext\1955vcs\GIS\mapdocs\Basemaps\Level1\Presentation\SPW_Alt_Presentation.mxd

Source: © Mapbox, © OpenStreetMap



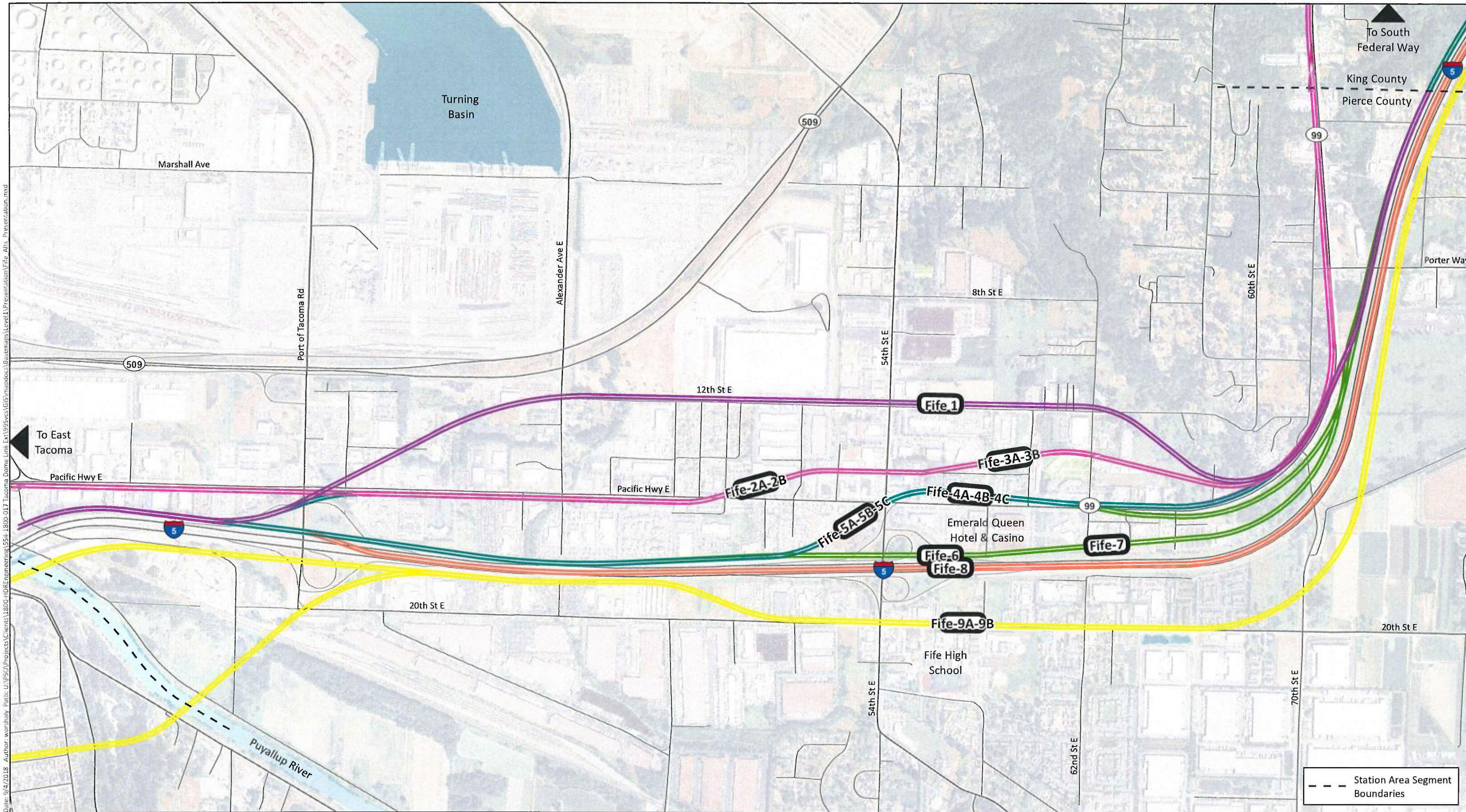
South Federal Way Alternative Alignments

- | | | |
|----------------------|--------------------------|------------------|
| SF 1 Enchanted 348th | SF 5 SR 99 | SF 9 I-5 West |
| SF 2 Enchanted 352nd | SF 6 I-5 to SR 99 | SF 10 I-5 Median |
| SF 3 Enchanted 356th | SF 7 I-5 to SR 99 to I-5 | SF 11 - I-5 East |
| SF 4 SR 99 to I-5 | SF 8 Representative | |

LEVEL 1 ALTERNATIVES
SOUTH FEDERAL WAY

TACOMA DOME LINK EXTENSION
DRAFT 9/4/2018

Date: 9/4/2018 Author: worchulj Path: U:\Projects\Tacoma Dome Link Extension\MapDocs\Basemap\Level1Presentation\Fife Alt. Presentation.mxd



Source: © Mapbox, © OpenStreetMap



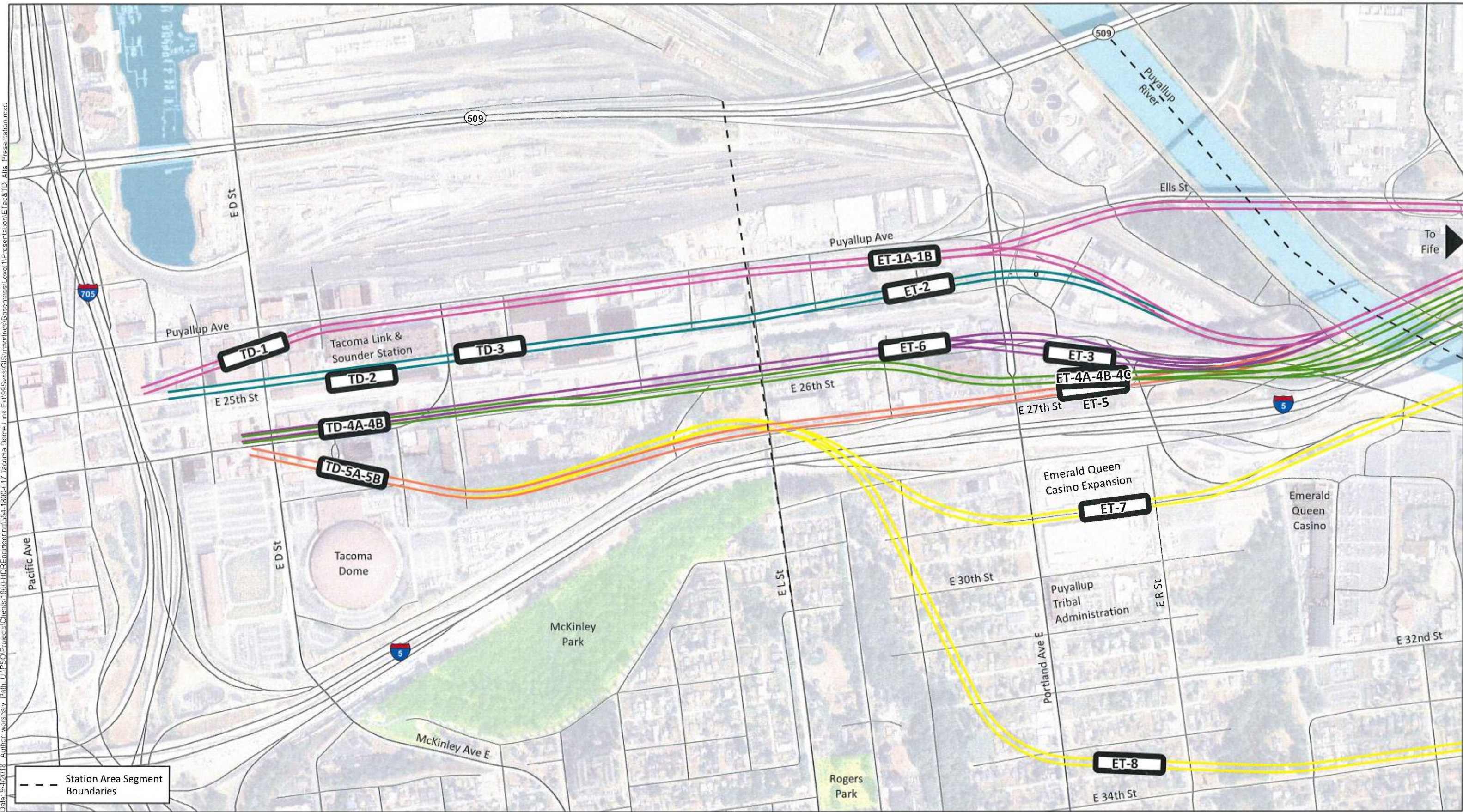
Fife Alternative Alignments

- | | | |
|------------------------------------|--------------------------|-------------------|
| Fife 1 I-5W to 12th | Fife 5 Pacific Hwy East | Fife 9 I-5 East |
| Fife 2 I-5W to Pacific Hwy to I-5W | Fife 6 Pacific Hwy South | Fife 10 I-5 South |
| Fife 3 I-5W to Pacific Hwy | Fife 7 Representative | |
| Fife 4 I-5W to SR 99 | Fife 8 I-5 Median | |

LEVEL 1 ALTERNATIVES
FIFE



TACOMA DOME LINK EXTENSION
DRAFT 9/4/2018

Date: 9/4/2018 Author: worshaly Path: U:\PSO\Projects\Clients\1800-HDR\Engineer\554-1800-017 Tacoma Dome Link Extension\GIS\mapdocs\Level1\Presentation\ETac&TD_Altis Presentation.mxd



Source: © Mapbox, © OpenStreetMap

0 250 500 1,000 Feet



- Tacoma Dome Alternative Alignments**
- TD 1 Puyallup Ave
 - TD 2 I-5W to E 25th
 - TD 3 I-5W to E 26th North
 - TD 4 Representative
 - TD 5 I-5W to E 27th
 - TD 6 I-5 East
 - TD 7 I-5 South

- East Tacoma Alternative Alignments**
- ETac 1 I-5 to Puyallup Ave
 - ETac 2 SR 99 to Puyallup Ave
 - ETac 3 I-5W to E 25th
 - ETac 4 I-5W to E 26th North
 - ETac 5 SR 99 to I-5W to E 26th
 - ETac 6 Representative
 - ETac 7 I-5W to E 26th South
 - ETac 8 I-5W to E 27th
 - ETac 9 I-5W to E 26th
 - ETac 10 I-5 East
 - ETac 11 I-5 South

LEVEL 1 ALTERNATIVES
EAST TACOMA & TACOMA DOME

TACOMA DOME LINK EXTENSION
DRAFT 9/4/2018