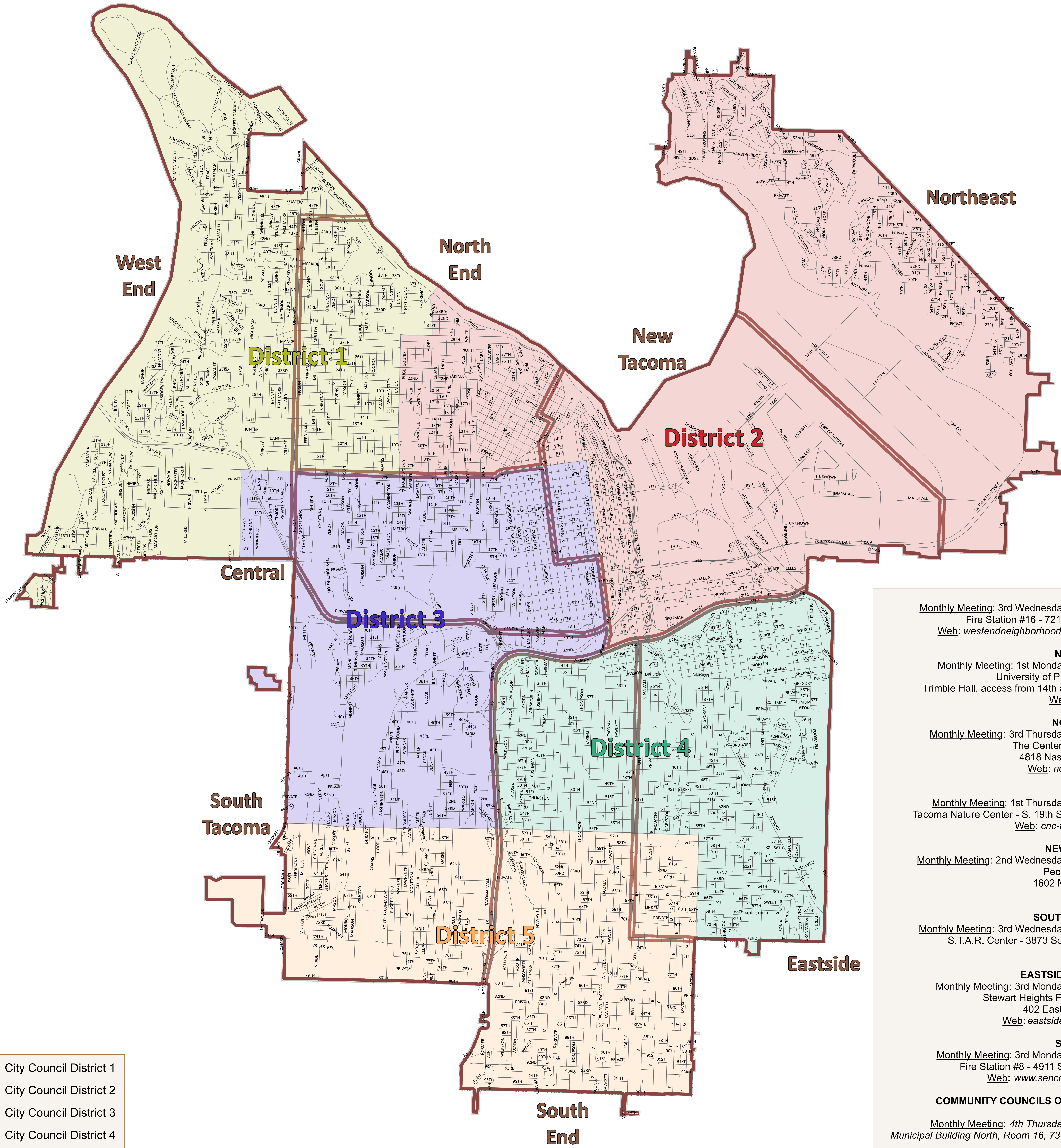


Councilmanic and Neighborhood Council Districts

City of Tacoma



- City Council District 1
City Council District 2
City Council District 3
City Council District 4
City Council District 5
Neighborhood Council

WEST END
Monthly Meeting: 3rd Wednesday, 7:00 p.m.
Fire Station #16 - 7217 Sixth Ave.
[Web: westendneighborhoodcouncil.com](http://www.westendneighborhoodcouncil.com)

NORTH END
Monthly Meeting: 1st Monday, 6:00 p.m.
University of Puget Sound
Trimble Hall, access from 14th and Alder St
[Web: nenc.org](http://www.nenc.org)

NORTHEAST
Monthly Meeting: 3rd Thursday, 6:00 p.m.
The Center at Norpoint
4818 Nassau Ave NE
[Web: netacoma.net](http://www.netacoma.net)

CENTRAL
Monthly Meeting: 1st Thursday, 7:00 p.m.
Tacoma Nature Center - S. 19th St & Tyler St
[Web: cnc-tacoma.com](http://www.cnc-tacoma.com)

NEW TACOMA
Monthly Meeting: 2nd Wednesday, 5:30 p.m.
People's Center
1602 MLK Jr. Way
[Web: N/A](http://www.netacoma.net)

SOUTH TACOMA
Monthly Meeting: 3rd Wednesday, 6:30 p.m.
S.T.A.R. Center - 3873 South 66th St.
[Web: N/A](http://www.netacoma.net)

EASTSIDE (ENACT)
Monthly Meeting: 3rd Monday, 6:00 p.m.
Stewart Heights Pool Building
402 East 56th Street
[Web: eastsidetacoma.net](http://www.eastsidetacoma.net)

SOUTH END
Monthly Meeting: 3rd Monday, 7:00 p.m.
Fire Station #8 - 4911 S. Alaska St.
[Web: www.sencotacoma.org](http://www.sencotacoma.org)

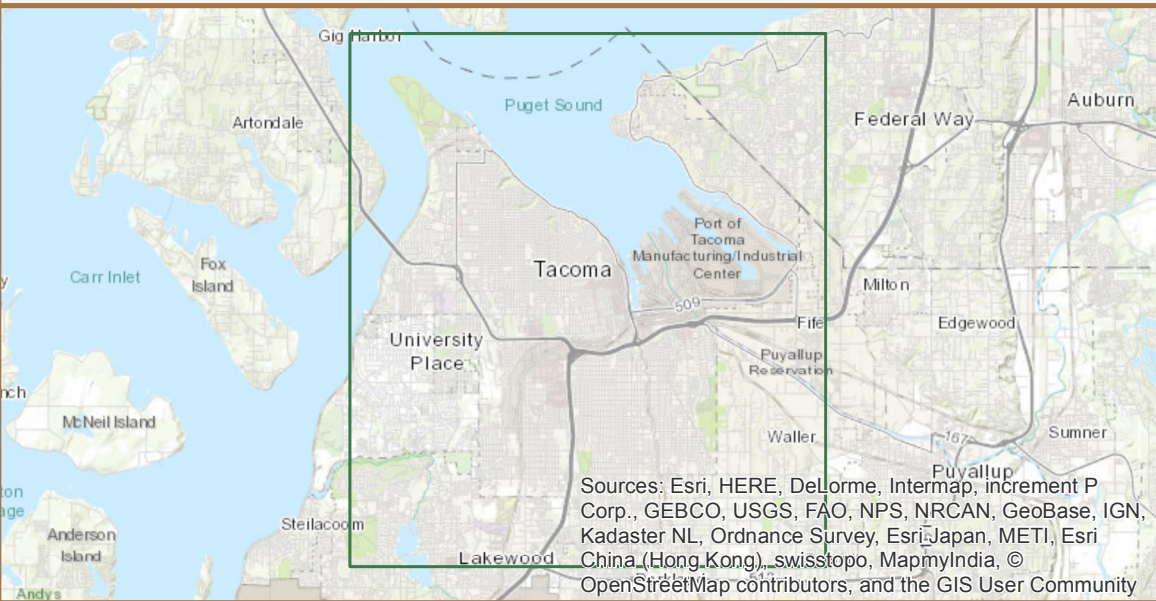
COMMUNITY COUNCILS OF TACOMA
Monthly Meeting: 4th Thursday, 6:00 p.m.
Municipal Building North, Room 16, 738 Market St.

[Contact: Carol Wolfe, Neighborhood Council Coordinator,](mailto:Carol.Wolfe@cityoftacoma.org)
Phone: 253.591.5384

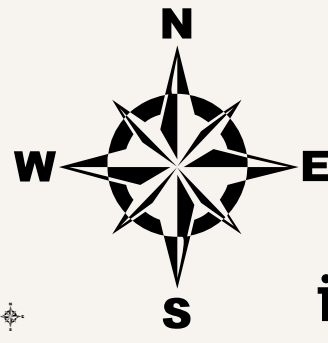
COUNCILMANIC DISTRICTS OF TACOMA

The Tacoma City Council is comprised of the Mayor and eight Council Members. Five of the Council Members are elected from each of the city's five councilmanic districts. The Mayor and three additional Council Members are elected to city-wide, or at-large, positions. On Nov. 15, 2011, the Tacoma City Council adopted new boundaries for the districts, ensuring each district has nearly equal population without splitting neighborhoods or communities. Boundaries are effective 2012 through 2021.

Map Location



City of Tacoma
Community & Economic Development Department
GIS Analysis & Data Services



This drawing is neither a legally recorded map nor a survey and is not intended to be used as one. It is to be used for reference purposes only.

