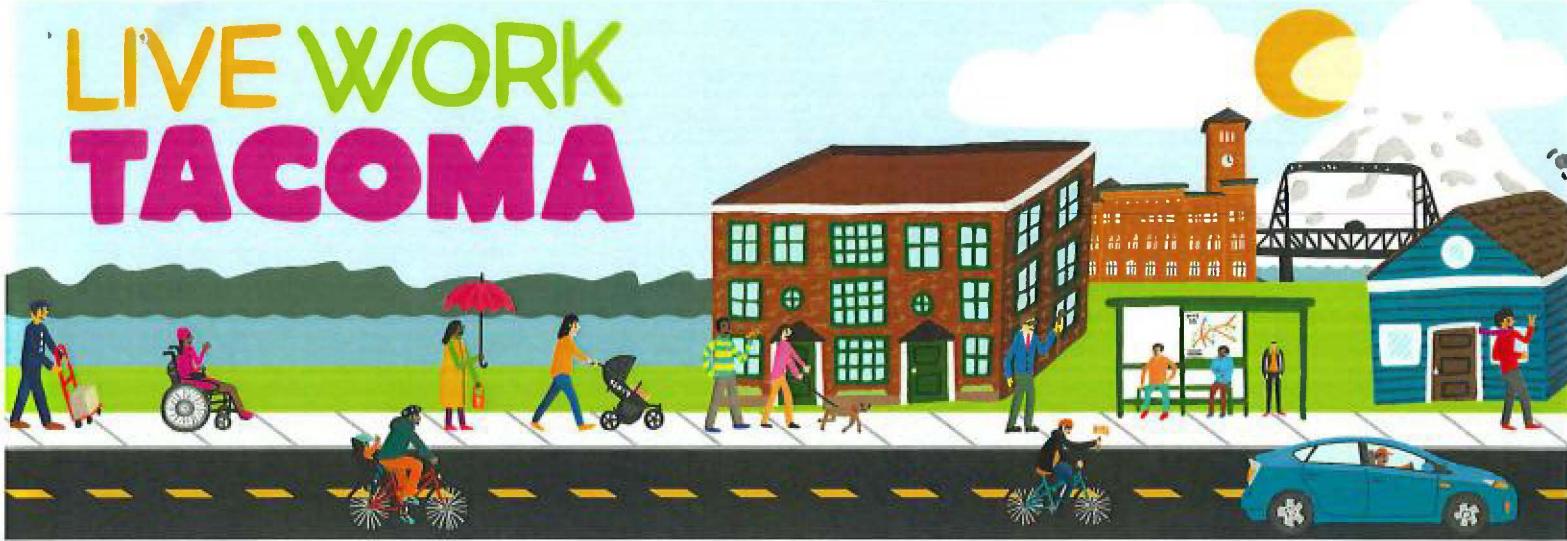


LIVE WORK TACOMA



Increase your bottom line with DOTG's Live Close to Work Program

EMPLOYER BENEFITS

- increased employee retention
- reduced parking costs
- increased productivity
- decreased absenteeism
- lower healthcare costs

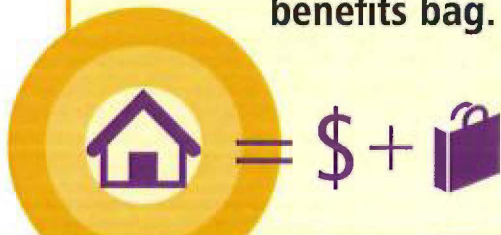
EMPLOYEE BENEFITS

- financial incentives
- discounted rentals
- home loan benefits
- discounts on local restaurants, entertainment, and more!



How it Works

When an employee moves within 1-3 miles from work, they will receive a financial incentive and a benefits bag.



How to Participate

- 1 Sign up
- 2 Contribute based on number of employees
- 3 Make program information available

Get in touch!

Beka Burton
bekab@downtownonthe.org
253-682-1738

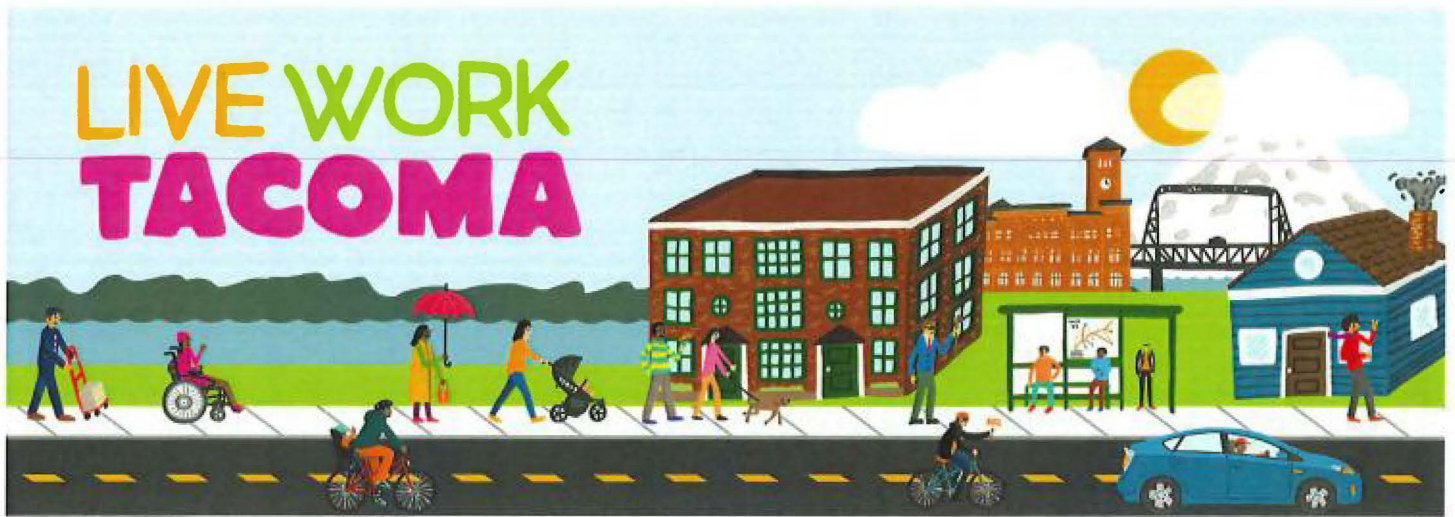
"Participating in the Live Close to Work program was an easy decision for SiteCrafting. The resources help support a healthy work/life balance for our employees, and it provides us a great way to stay connected with the downtown Tacoma community."

Sarah Champion
Director of Operations
SiteCrafting



DOWNTOWN:
On the go!





Live Close to Work Employee Benefit Program

The **Live Close to Work** program was built to incentivize employees to live closer to where they work. When employees live closer to where they work, they are happier, healthier, and more likely to walk, bike, or bus.

Your company benefits from this program by:

- Having higher employee retention rates
- Lower employee absenteeism
- Increased employee productivity
- Reduced parking costs
- Improved employee health / happier employees (which leads to lower health care costs)

Here is how your business can be a part!

1. **Learn about program** – DOTG Program Manager meets with your leadership for a 30-minute presentation, details, and questions. When an employee moves within a 1, 2, or 3 mile radius of your business, they will receive a financial incentive and benefits bag.
2. **Sign Live Close to Work Agreement** – The agreement states you are willing to participate in the program, contribute to Live Close to Work Fund for employee incentives and employee incentive matching, and promote the program to all employees.
3. **Contribute flat yearly rate to program based on number of employees** – You choose if you want the Live Close to Work program to apply to all employees, part-time, full-time, or benefit eligible employees.
 - a. 1-25 employees = \$500
 - b. 26-100 employees = \$2500
 - c. 101-500 employees = \$6000
 - d. 500+ employees = \$7500

- e. **Employee Matching** – When an employee makes a move within company radius, DOTG pays half and company pays half of financial moving incentive

You are now an official Live.Work.Tacoma. participating business! Your business is now eligible for business partners benefits.

You will receive a personalized company radius sheet – There are 3 tiers to the program with different monetary amounts available.

- a. **1 Mile Radius** – Move within 1 mile of office – receive \$2000 financial moving incentive
- b. **2 Mile Radius** – Move within 2 miles of office – receive \$1000 financial moving incentive
- c. **3 Mile Radius** – Move within 3 miles of office – receive \$500 financial moving incentive



FAQ

Who's eligible?

- 1. **Financially Eligible**
 - a. Existing employees who work for participating businesses once agreement is signed and then make a move into Tier 1, 2, or 3.
 - b. New employee who currently lives within Tier 1, 2, or 3 of your participating businesses.
- 2. **Benefits Bag only Eligible**
 - a. Existing Employees of participating businesses who currently live within Tier 1, 2, or 3.

How does employee receive financial benefit?

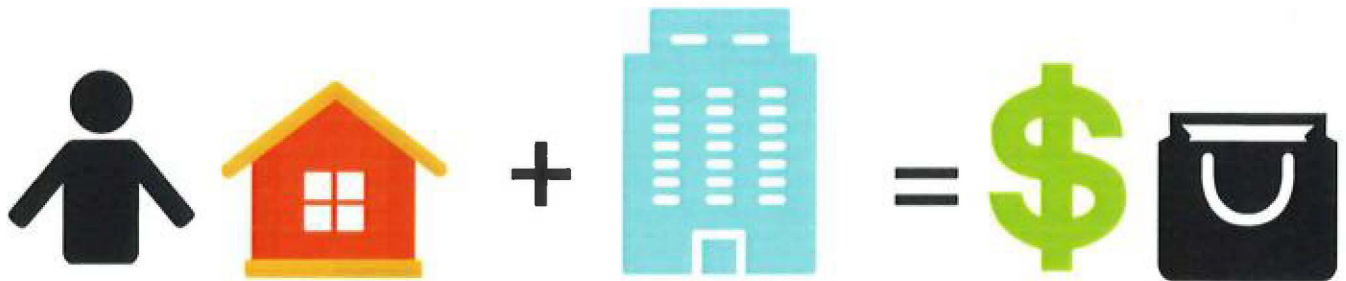
- 1. Employees contact Program Manager at Downtown On the Go after they make a move into Tier 1, 2, or 3.
- 2. Downtown On the Go verifies employment with HR contact listed on Live Close to Work agreement.
- 3. Downtown On the Go verifies address.
- 4. Check and benefits bag given to employee in person by DOTG representative.

DOTG Distributes Live Close to Work funds & Tacoma benefits bag based on living radius – Financial incentives available within City of Tacoma limits only.

Program Eligibility Table



When employee moves within 1-3 miles of your office, they receive incentive & benefits bag



When someone gets a job within 1-3 miles of their home, they receive incentive & benefits bag



When an employee already lives within 1-3 miles of your office, they receive benefits bag only

DOWNTOWN: On the *go!*