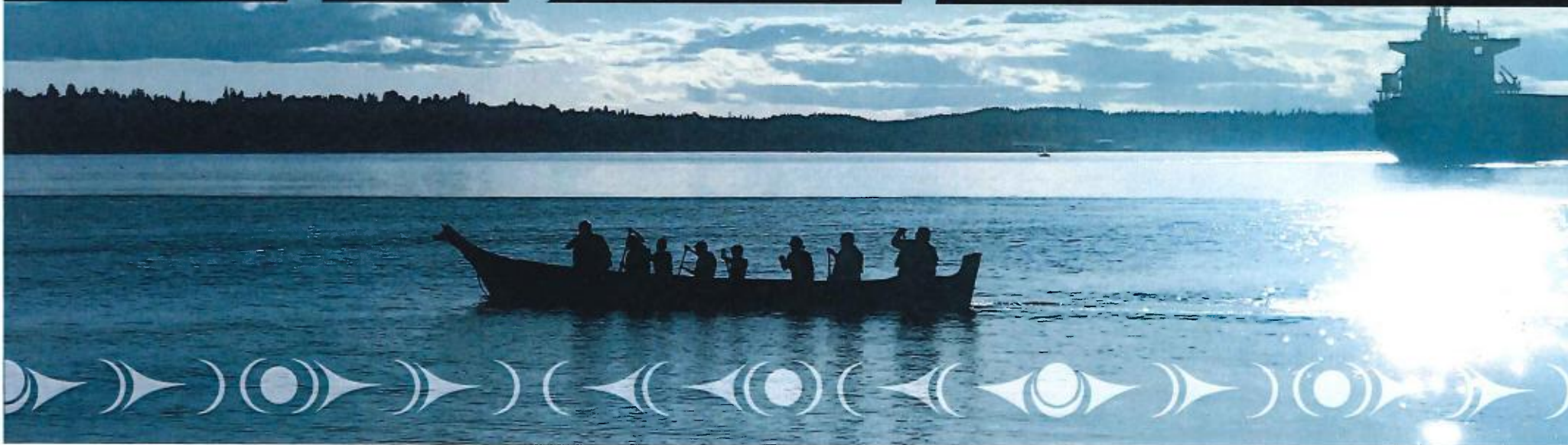
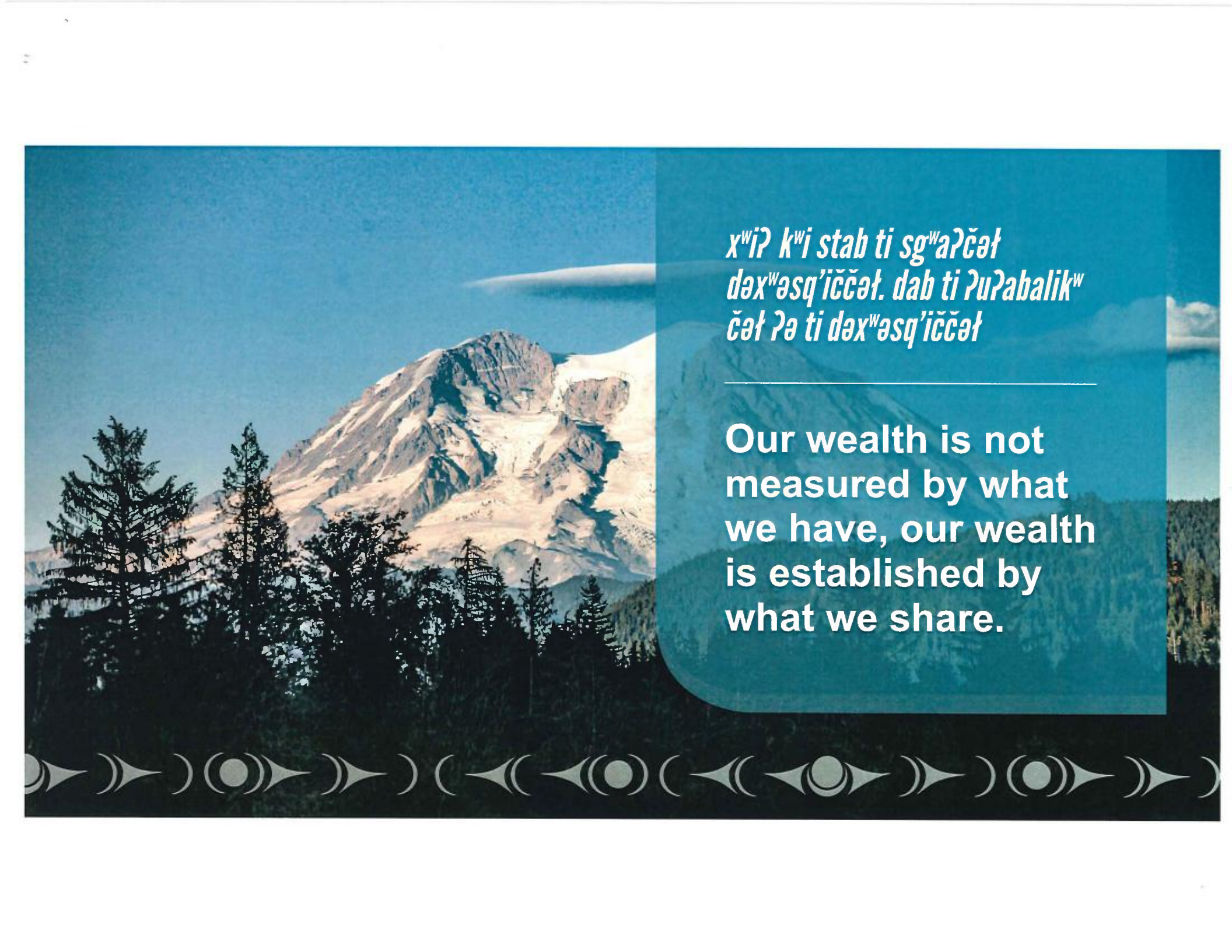




Puyallup Tribe of Indians

# *spuyaləpabš*





*x<sup>w</sup>iʔ k<sup>w</sup>i stab ti sg<sup>wa</sup>ʔčəł  
dəx<sup>w</sup>əsq'iččəł. dab ti ʔuʔabalik<sup>w</sup>  
čəł ʔə ti dəx<sup>w</sup>əsq'iččəł*

Our wealth is not  
measured by what  
we have, our wealth  
is established by  
what we share.





## Puyallup Tribe of Indians Today

**As people of the south Salish Sea:**

- » We are dedicated to protecting the lands and waters that have sustained us for thousands of years.
- » We are a sovereign nation of 5,000 members who live across Tacoma, Fife, Milton, Edgewood, Puyallup, Federal Way, and unincorporated King and Pierce Counties.



*ti šag<sup>w</sup>ł ti ʔuʔux<sup>w</sup>tub ʔə tiit tuyəl'yəlabčət*

## The Path Our Ancestors Took

- » Our people have lived in villages along the Salish Sea and the foothills of Takobud (Mt. Rainier) for thousands of years.
- » Then, as now, we existed by the bounty of the Creator: salmon, shellfish, wild game, roots, berries.
- » We keep our ancestors' values alive by practicing our culture every day.



uses and bands, and duly authorized by them.

Art. I The said tribes and bands of Indians hereby cede, relinquish and convey to the United States of America all their rights, title and interest to the lands and country occupied by them, and the following follows, to wit:

## slələʔuləbčəʔ | Our History

- » **Medicine Creek Treaty:** Signed in 1854 by Puyallup leaders and Governor Isaac Stevens before Washington was a state.
- » **Fish-ins & the Boldt Decision:** We have always fought to protect our right to fish.
- » **The Puyallup Land Claims Settlement:** In 1988, federal, state, and local authorities entered into an agreement with the tribe that remains the second-largest Native land resolution in history. More than 900 acres were returned to the Puyallup people, in part setting the stage for today's economic self-determination.

known as Wilkes' portage to Point Southworth on the western side of Admiralty Inlet, thence around the foot of Vashon's Island



# Puyallup Tribe: A Sovereign Nation

**We're a sovereign nation of more than 5,000 members, many of whom live on or near the 30 square miles of our reservation.**

Our seven-member Tribal Council is committed to the well-being and prosperity of the Puyallup people

***ʔuʔiʔabildubut ti spuyaləpabš***

Our government provides 63 service programs, including:

- » Education support
- » Health and well-being
- » Affordable Housing
- » Planning and community development
- » Natural Resource Protection
- » Business Development Investments
- » Cultural Protection
- » Law Enforcement and Courts

*Puʔabətxəčbid čət ti syayusčət txʷəl  
kʷədi ʔulitlaq ʔuʔacitʔalbixʷ ʔuləʔəʔ*

## Our Commitment to the Next Generation

We foster learning that is rigorous,  
culturally appropriate, and rooted in  
Puyallup tradition.

- » **Grandview Early Learning Center**  
provides childhood care for more than  
200 Native children.
- » **Chief Leschi School** teaches more  
than 750 students, representing more  
than 60 different tribes.



*Puʔabəłxəčbid čət ti syayusčət txʷəl  
kʷədi łulitlaq łuʔacitłalbixʷ łuləʔəłʰ*

## Our Commitment to the Next Generation

- » We provide substantial **tuition and textbook assistance** for full and part-time tribal member students pursuing higher education.
- » The **Puyallup Language Program** is revitalizing Twulshootseed—a dialect of the Coast Salish Lushootseed language family.

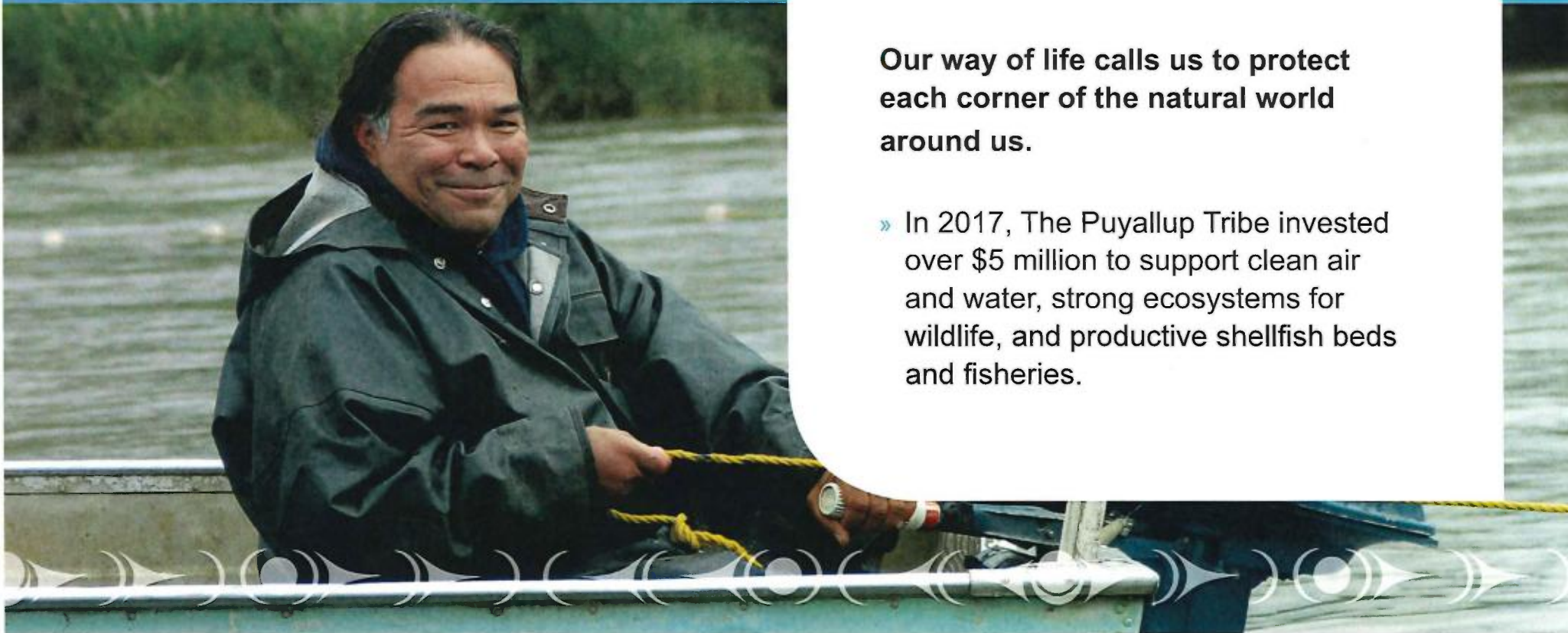


*tul'al ti swatx<sup>w</sup>ix<sup>w</sup>tx<sup>w</sup>əd tiit bək'<sup>w</sup>  
stab dæx<sup>w</sup>ʔuŋəqədčəł ti bək'<sup>w</sup> stab*

## Protecting Our Natural Resources

Our way of life calls us to protect  
each corner of the natural world  
around us.

» In 2017, The Puyallup Tribe invested  
over \$5 million to support clean air  
and water, strong ecosystems for  
wildlife, and productive shellfish beds  
and fisheries.



*tul'al ti swatx<sup>w</sup>ix<sup>w</sup>tx<sup>w</sup>əd tiit bək'<sup>w</sup>  
stab dəx<sup>w</sup>ʔuʂəqədčəł ti bək'<sup>w</sup> stab*



## Protecting Our Natural Resources

- » We operate three hatcheries that annually produce more than 5 million spring and fall chinook, coho, chum, and steelhead salmon in the Puget Sound watershed.
- » We've supported healthy habitat for wildlife and salmon with wetland and stream mitigation projects on Boise Creek, Wapato Creek, Clarks Creek, Wilkeson Creek, and Skookum Wuldge.



*ʔəsχid ti dəxʷʔuʔiʔabilčət*



## Our Economic Impact

New ventures and partnerships have allowed us to play an expanded role in the local and regional economy.

- » The Tribe and its subsidiaries are collectively the sixth largest employer in Pierce County, with a total workforce of 3,400.
- » Our largest business, the Emerald Queen Casino, has provided benefits to our members and the local economy.
- » Our new casino expansion will create over 100 new jobs and \$1.5 billion in economic impact over 10 years.

*Pabalik<sup>™</sup> Pa ti Puʻalalus ʻē*

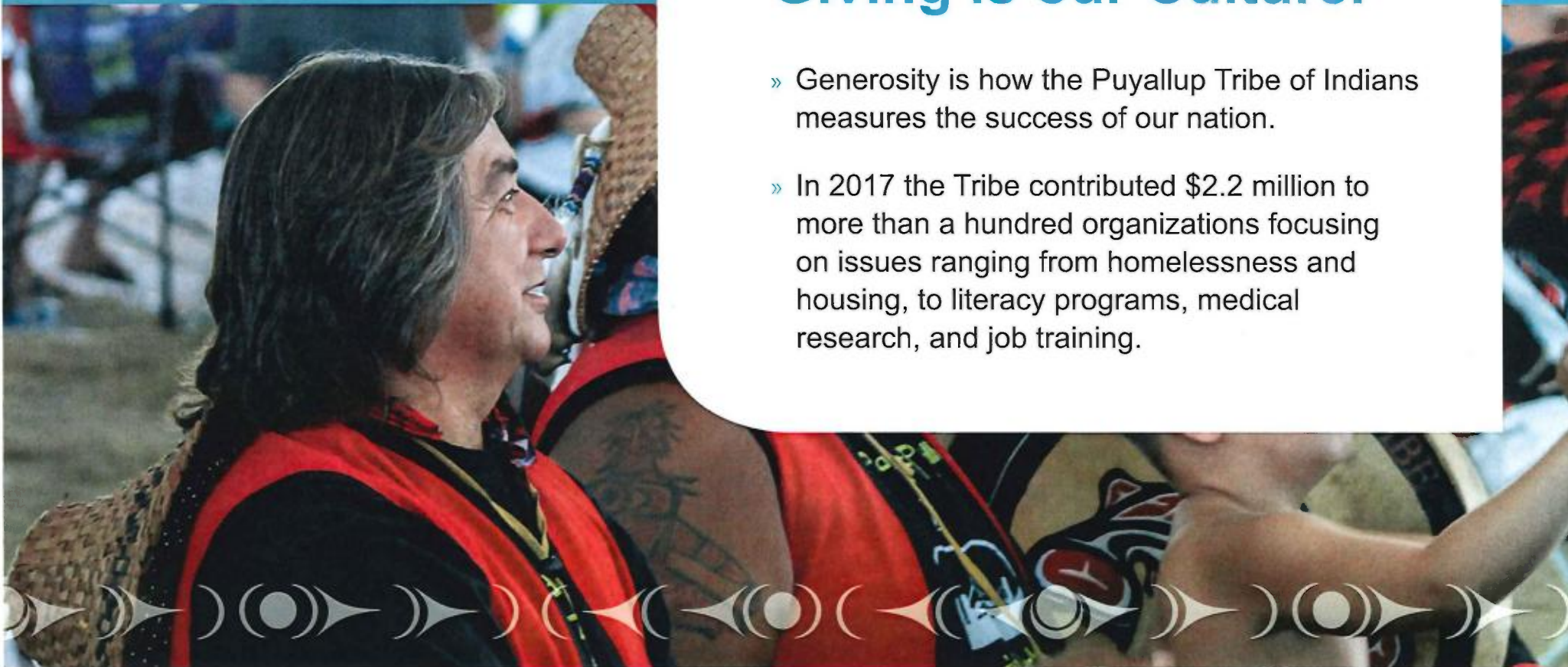
Giving is our Tradition,  
Giving is our Culture.



*Pabalikʷ ʔə ti ʔuʔalalus čəł*

## Giving is our Tradition, Giving is our Culture.

- » Generosity is how the Puyallup Tribe of Indians measures the success of our nation.
- » In 2017 the Tribe contributed \$2.2 million to more than a hundred organizations focusing on issues ranging from homelessness and housing, to literacy programs, medical research, and job training.



*Pabalik' Pə ti PuPalalus čəł*

## Giving is our Tradition, Giving is our Culture.

- » Puyallup Tribe also contributes to the cities of Tacoma, Fife, and Puyallup, and Pierce County for fire, police, and justice services.
- » In the past 10 years, the Tribe's charitable contributions have totaled over \$22 million to hundreds of organizations in our community and in throughout the state.



Be kind, be helpful,  
be sharing.

*ᐱᕐᕐᕐᕐᕐᕐ  
ᐱᕐᕐᕐᕐᕐᕐ  
ᐱᕐᕐᕐᕐᕐᕐ*





## **Puyallup Tribe of Indians**

**3009 Portland Ave E, Tacoma, WA 98404**

**[www.puyallup-tribe.com](http://www.puyallup-tribe.com)**

**(253) 573-7800**