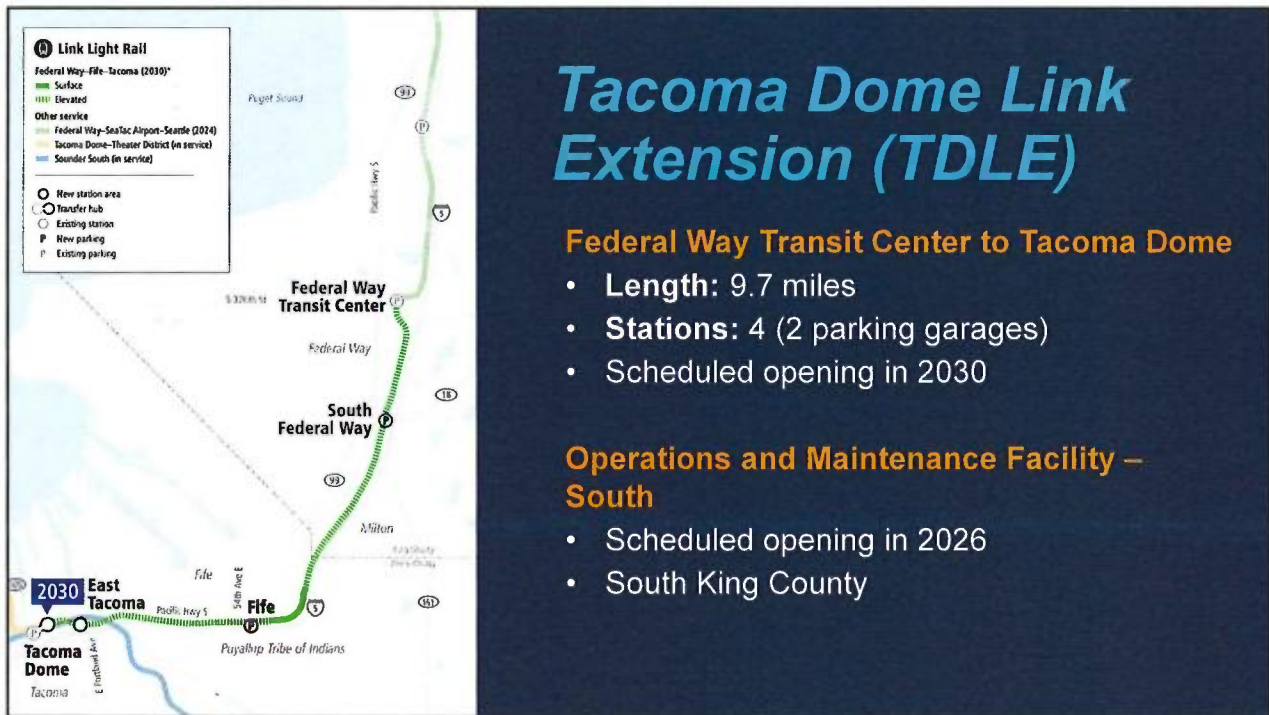


Agenda

- › *Project overview*
- › *Technical evaluation results*
- › *Next steps & scoping information*



TDLE project timeline








Alternatives development process







Final evaluation criteria categories

- 
› Effective transportation solutions
- 
› Land use and economic development and Transit-Oriented Development (TOD)
- 
› Preserve the environment
- 
› Equitable mobility
- 
› Financially sustainable and constructible

Categorization of alternatives from Level 2 technical evaluation



All alternatives are compared to others in each station area

Preferred Alternative and other alternatives to study in the EIS

11

Start of feedback table

Alternatives	Technical Analysis	Public Feedback	SG Feedback	ELG Recommendation
Alternatives with <u>MORE POTENTIAL</u>				
TD 2 25th Street West	Notable Advantages: <ul style="list-style-type: none">Key takeaway Notable Disadvantages: <ul style="list-style-type: none">Key takeaway	Scoping period	SG meeting: mid-May	ELG meetings: late May, early June
TD 3 25th Street East	Notable Advantages: <ul style="list-style-type: none">Key takeaway Notable Disadvantages: <ul style="list-style-type: none">Key takeaway			
Alternatives with <u>GREATER CHALLENGE</u>				
TD 1 Puyallup Avenue	Notable Advantages: <ul style="list-style-type: none">Key takeaway Notable Disadvantages: <ul style="list-style-type: none">Key takeaway			
TD 4 East off-street E 26th Street	Notable Advantages: <ul style="list-style-type: none">Key takeaway Notable Disadvantages: <ul style="list-style-type: none">Key takeaway			

➤ Technical analysis first step in evaluation

➤ Before ELG recommendation, table will include summary of public feedback from scoping & Stakeholder Group feedback

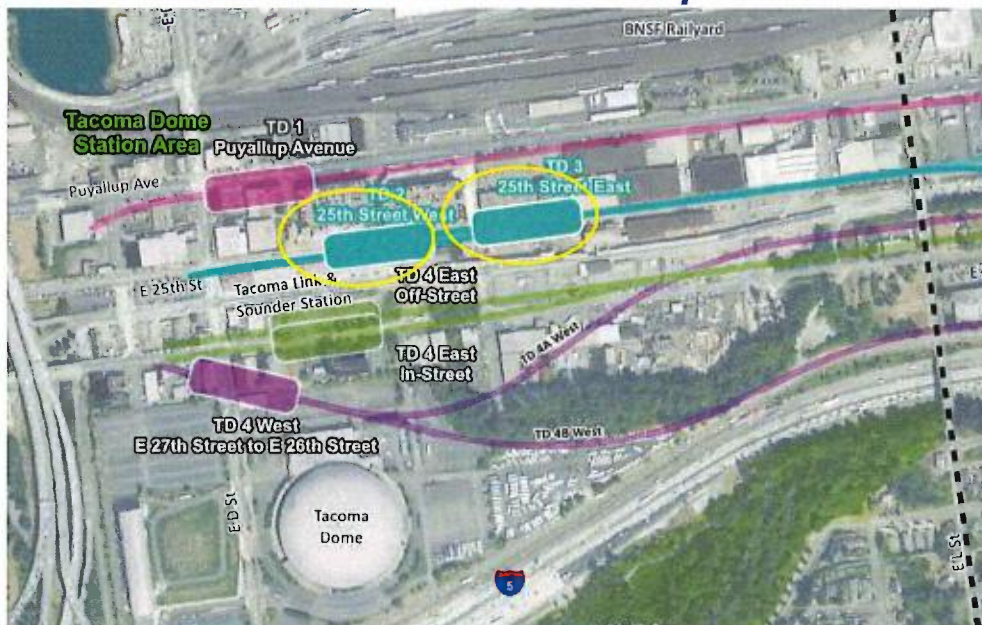
- Technical analysis first step in evaluation
- Before ELG recommendation, table will include summary of public feedback from scoping & Stakeholder Group feedback

Tacoma Dome: Level 2 alternatives



13

Tacoma Dome: Alternatives with more potential



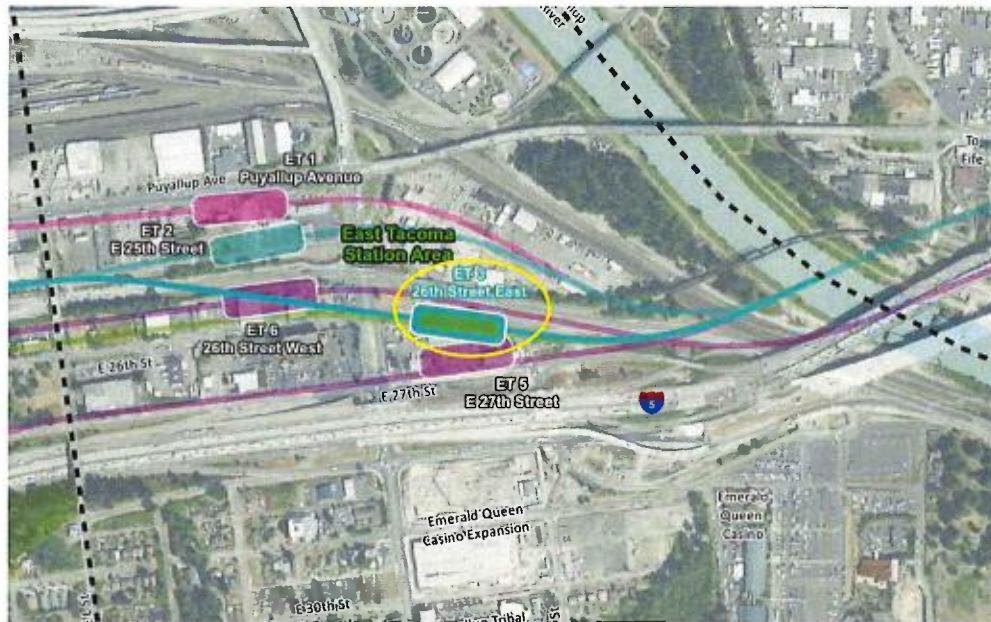
Tacoma Dome: Alternatives with greater challenges



Level 2 alternatives: East Tacoma



East Tacoma: Alternatives with more potential



East Tacoma: Alternatives with greater challenges

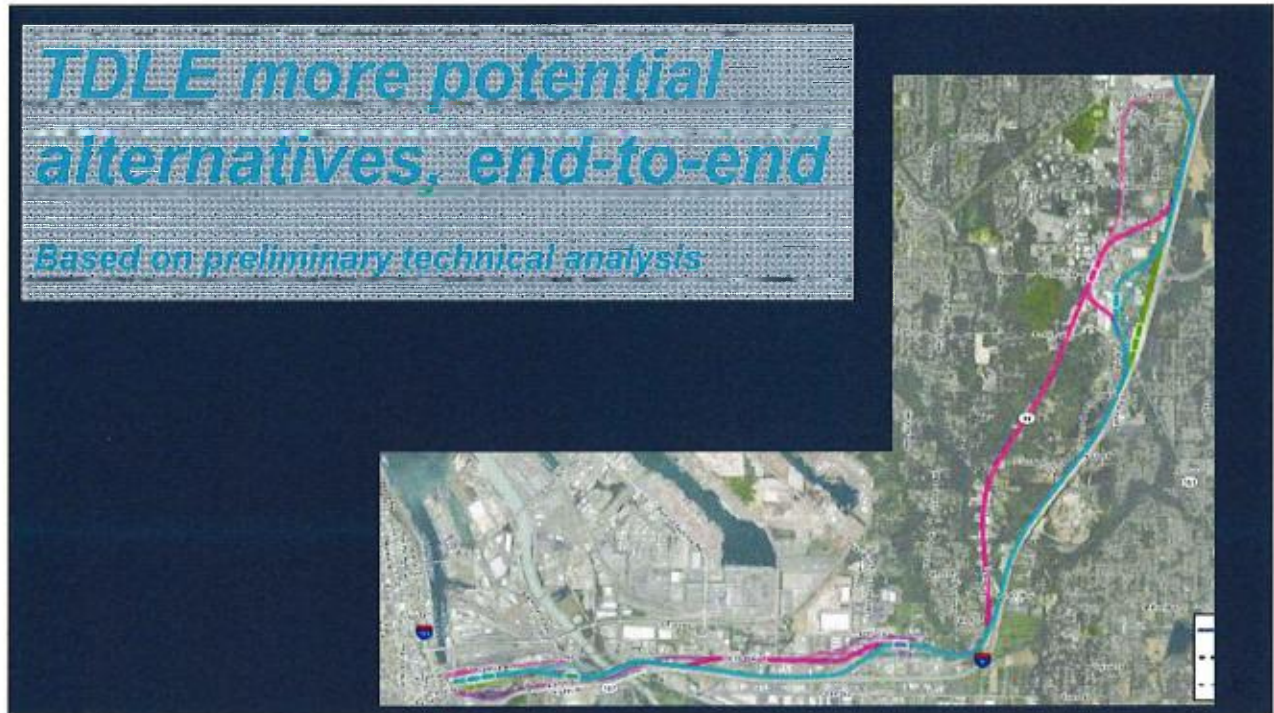


Tacoma Dome & East Tacoma station areas



Tacoma Dome & East Tacoma: more potential





What is EIS scoping for TDLE?

- Start of federal environmental review process
- 30-day **public comment period, April 1-May 1** (tentative)
- Seeking public **feedback on scope of EIS**
 - Preferred alternative and other alternatives for further study
 - Topics to study (e.g. economics, displacements, ecosystems)
 - Purpose and need
- **Informs Board decision** on what to study in EIS

23

Next steps for TDLE*

Preliminary schedule to reach a preferred alternative

March

Briefings on Level 2 evaluation results to:

- To Cities & Tribal staff & elected officials
- ELG and SG meetings

April (tentative)

EIS scoping period, including:

- Online and in-person open houses
- **Formal comments encouraged**

May-June (tentative)

Building consensus around preferred alternative and other options, including:

- Scoping summary report
- SG feedback
- City/Tribal Councils' post-scoping guidance to ELG
- **ELG recommendation to ST Board**

**dates are subject to change*

24

Next steps*

EIS Scoping

- **OMF South:**
Feb. 19 – April 1
- **TDLE:**
April 1 – May 1
(tentative)

Next ELG meetings (tentative)

- May 31
- June 14

ST Board identifies sites for environmental review

- **OMF South:** May 2019

ST Board identifies preferred alternative and other alternatives for EIS

- **TDLE:** July 2019

*dates are subject to change

25



Questions?

soundtransit.org/tdlink 

 **SOUNDTRANSIT**

26