



# Commingled Recycling

City of Tacoma | Environmental Services Department

Infrastructure, Planning, and Sustainability

April 10, 2019

Outreach Results & Recommendations



## OVERVIEW



- Community engagement approach
- Community feedback summary
- Recommendations
- Next steps

## PROPOSED ACTIONS



1: Limited Recycling	2: Partial Recycling	3: Maintain Full Curbside Recycling	4: Maintain Full Recycling Plus
<ul style="list-style-type: none"> <li>• Additional 3% (\$1.33/month average) residential rate increase for additional landfill costs</li> <li>• Eliminates curbside recycling</li> <li>• 2 satellite drop-off recycle centers</li> </ul>	<ul style="list-style-type: none"> <li>• \$2.40 recycle surcharge/month</li> <li>• Eliminate curbside glass recycling</li> <li>• Provide satellite glass boxes or recycle stations</li> </ul>	<ul style="list-style-type: none"> <li>• \$3.00 recycle surcharge/month</li> <li>• Remove problem items from commingle recycle list</li> </ul>	<ul style="list-style-type: none"> <li>• \$4.00 recycle surcharge/month</li> <li>• Remove problem items from commingle recycle list</li> <li>• Provide satellite glass boxes or recycle stations</li> <li>• Increased education on recycling</li> </ul>

3

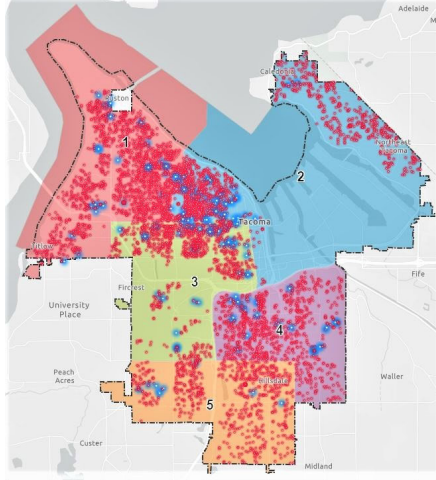
## Community Engagement



- 3 Focus Groups
- Presentations to all Neighborhood Councils
- Tabling at Community Events
- Media Coverage – TV, print, web, podcast
- Website [www.tacomarecycles.org/changes](http://www.tacomarecycles.org/changes)
- On-line Survey available in 6 languages

4

## Feedback Demographics



### Survey responses:

Total = 7,438

Tacoma single family/duplex = 6,176

District	# Responses	% of Total
1	1813	29%
2	1406	23%
3	1194	19%
4	1016	16%
5	747	12%

### Legend

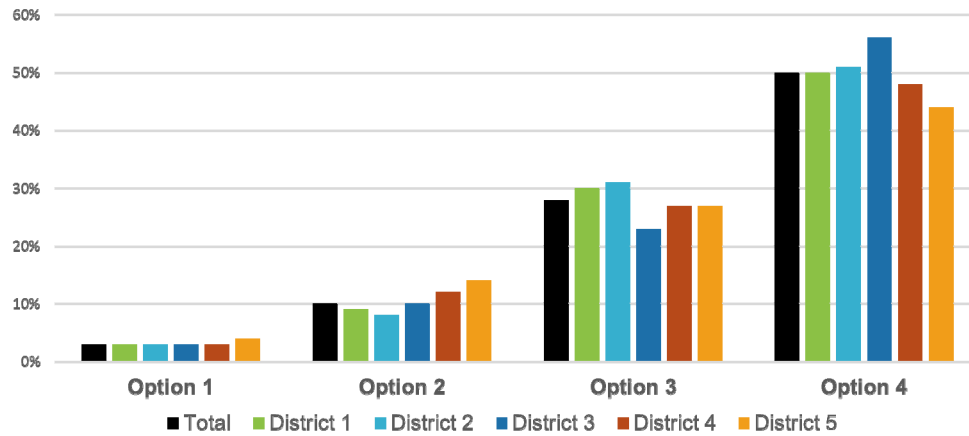
- Single Family
- Duplex

5

## Feedback Results



Option Preference Percentage by Council District

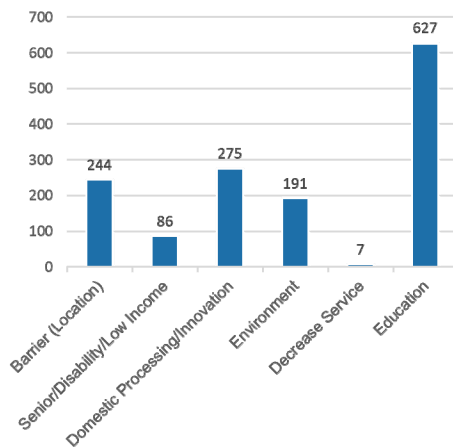


6

## Feedback results



Comment Themes



"If the curbside recycling program ends, our family simply will stop recycling. We don't have time or space to hold everything to haul it to a satellite location" - **Barrier (Location)**

"I am extremely concerned about the future of recycling in our City and across the US and what it means for landfills, social responsibility and the environment. *We cannot go backwards.*" - **Environment**

"I know you guys are doing everything you can, but people DO NOT understand what is recyclable and what is not!" - **Education**

"I'd be supportive of banning glass and most plastics from recycling, if those are creating costs instead of savings for the recycling program." - **Decrease Service**

"I am disabled and elderly and need curbside service. I am retired so I would prefer to spend \$3-\$5 extra a month." - **Senior/Disability/Low Income**

7

## HEALTH, EQUITY & SUSTAINABILITY ANALYSIS

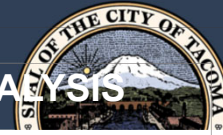


### EQUITY

- Survey provided in 6 languages online and through libraries and community centers
- Outreach targeted events and community groups representing diverse populations
- Support from community for waiving surcharge for low income customers in focus groups and at neighborhood councils

8

## ● ● ● HEALTH, EQUITY & SUSTAINABILITY ANALYSIS



### SUSTAINABILITY – Curbside Glass Collection



25% setout rate



Manual collection



Reloaded into 30 yard box



64 mile haul to Seattle

- **Collection impacts offset environmental benefits:** Net benefit estimated of 38 tons CO<sub>2</sub>/year avoided = \$20,000/ton CO<sub>2</sub> avoided
- **Inefficient system:** Annual net cost of \$765,000 to recycle 1663 tons = \$460/ton
- **Employee injury risk:** 11 driver injuries from 2015-2018 related to glass collection

9

## ● ● ● Recommendations



### 1. Maintain curbside commingled recycling with simplified list

- Strong customer support to maintain current curbside service
- Remove problematic items from list (shredded paper, plastic bags)

### 2. Include funding in surcharge for recycling education

- Explain changes to the system
- “Recycling Reset” focus on quality
- Increase understanding of the process and cost of recycling
- Utilize knock-and-talk strategy

10

## Recommendations



### 3. Change residential curbside glass recycling system

#### Satellite recycle centers in SE and NE Tacoma

- Provides education opportunity and equitable access

#### Glass drop off boxes

- Harmonizes with Pierce County system
- Less environmental impact from collections trucks

#### No glass in commingle

- Degrades value of glass and other materials
- Not recommended by Southwest Region Commingled Workgroup

11

## NEXT STEPS



Study Session – May 21

Resolution to Council – June

12



## Commingled Recycling

City of Tacoma | Environmental Services Department

Infrastructure, Planning, and Sustainability

April 10, 2019

Informational Briefing



## Feedback results



3 Focus Groups: Over 45, Under 45, Income < \$65,000

