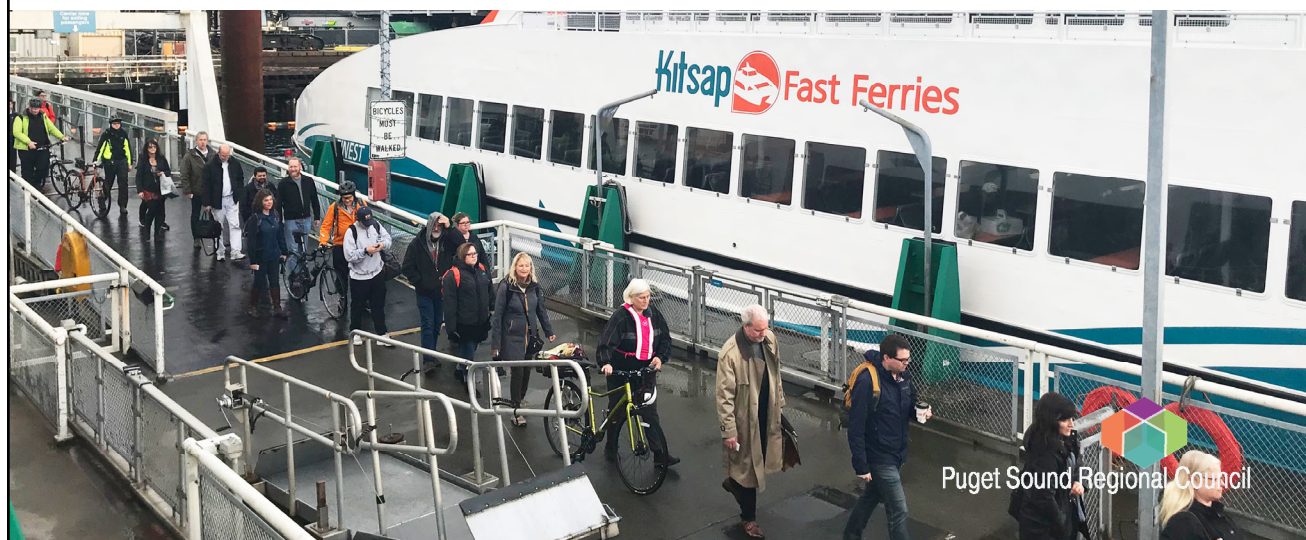


# Briefing on Puget Sound Region Ferry Study

## Passenger-Only



## The Mosquito Fleet of Puget Sound

Puget Sound's Mosquito Fleet by the numbers in the year 1900

Population of Seattle: 80,671

Population of Washington State: 518,103

**1,000,000** passengers carried and 900,000 tons of freight handled.

225 "steamers" estimated to be in the Mosquito Fleet. About 160 of them owned and operated from Seattle.

**26** routes throughout Puget Sound (19 of them based in Seattle), with 195 ports of call.



## Mosquito Fleet Decline

**1929**

The ferry industry consolidates into two companies: Black Ball and Kitsap County Transportation Company.

**1930's and 1940's**

The Great Depression combined with new competition from rail and roads puts financial pressure on private ferry industry.

**1951**

The last private ferry company, Black Ball, sells its assets to Washington Toll Bridge Authority, now known as Washington State Ferries.



3

## Washington State's Passenger-Only Ferries

**1986**

WSF procures first passenger-only ferry.

**1989**

Rich Passage property owners sue WSF for wake damage.

**2000**

Joint legislative task force concludes WSF should not expand service to new communities.

**2002**

Washington State settles Rich Passage suit for \$4.5 million.

**2006**

SB 6787, State Legislature directs WSF to exit the POF business.



4

## Locals Fill Passenger-Only Ferry Void

**2007**

King County Ferry District Formed; West Seattle-Downtown Water Taxi launched.

**2008**

Kitsap Transit purchased Port Orchard-Annapolis-Bremerton Foot Ferry service from private company; PSRC Passenger-Only Ferry study completed.



**2009**

King County takes over Vashon-Downtown Seattle route from WSF.

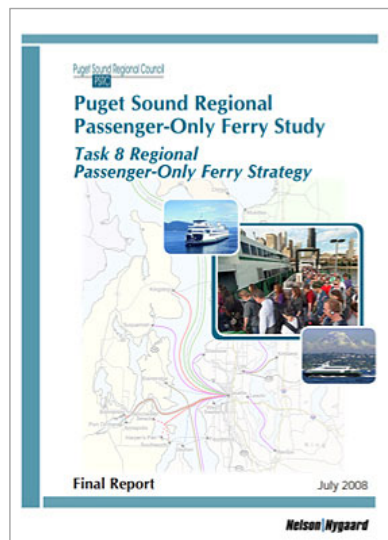
**2016**

 Kitsap Transit voters approve “Fast Ferry” 3/10% sales tax proposal.

5

## 2008 PSRC Passenger-Only Ferry Study

- Evaluated market opportunities for passenger-only ferries.
- Identified viability of routes—both existing and potential.
- Implementation considerations including vessel and facilities recommendations.
- Regional roles and action steps.
- Study led to the system in service today.



6

## Puget Sound Passenger-Only Ferry Routes

### Kitsap Transit

Bremerton – Port Orchard (12 mins)  
 Bremerton – Annapolis (5 mins)  
 Bremerton – Seattle (30 mins)  
 Kingston – Seattle (39 mins)  
 Southworth – Seattle (23 mins in 2020)

### King County

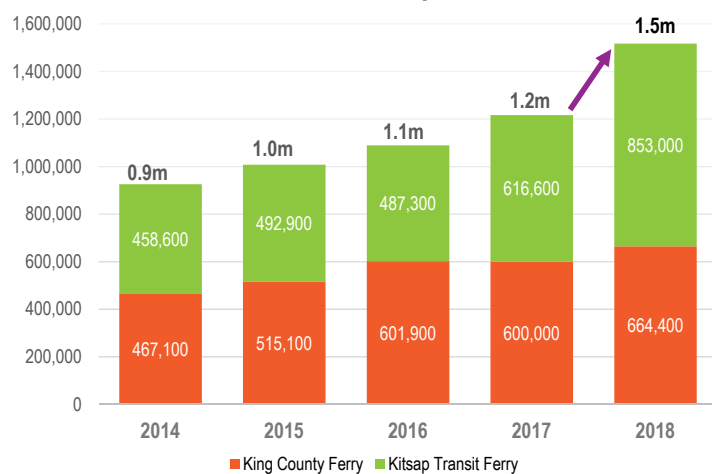
Vashon – Seattle (22 mins)  
 West Seattle – Seattle (10-15 mins)



7

## Puget Sound Passenger-Only Ferry Ridership

5-Year POF Ridership, 2014-2018



Note: Bremerton-Seattle Fast Ferry launched in July, 2017 and Kingston-Seattle Fast Ferry in November, 2018.

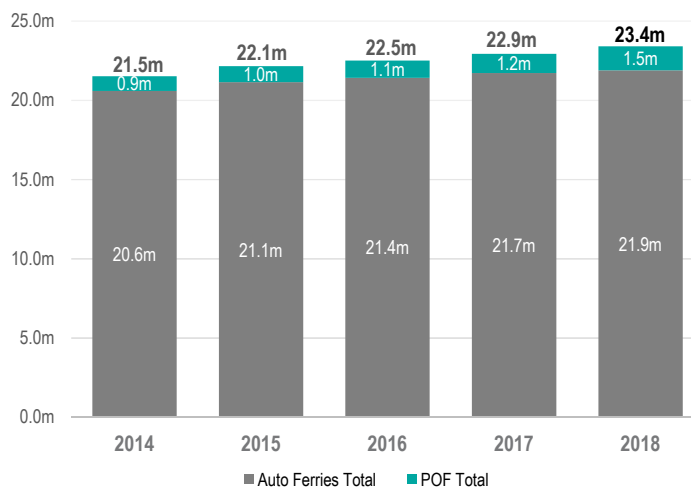
8



## Ridership is Growing for All Ferries



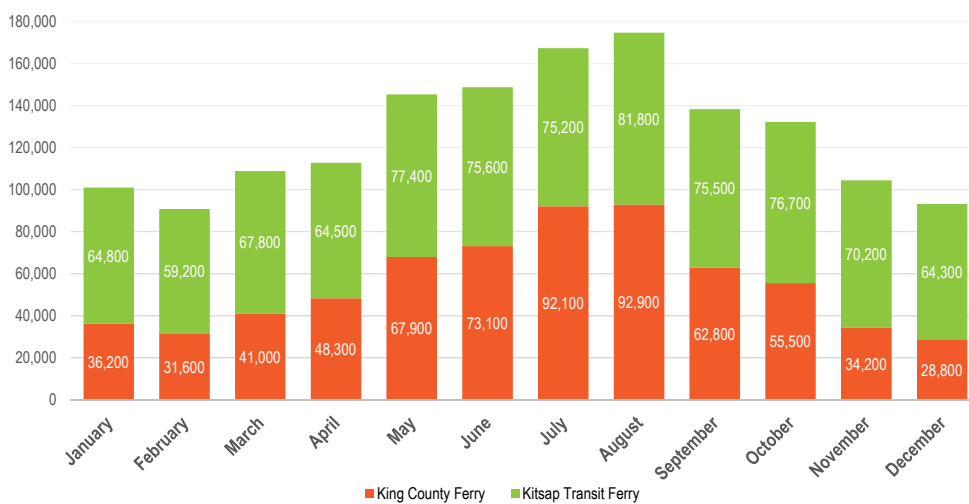
5-Year POF vs. Auto Ferries Ridership, 2014-2018



9

## Passenger-Only Ferry Ridership is Seasonal

Monthly POF Ridership, 2018

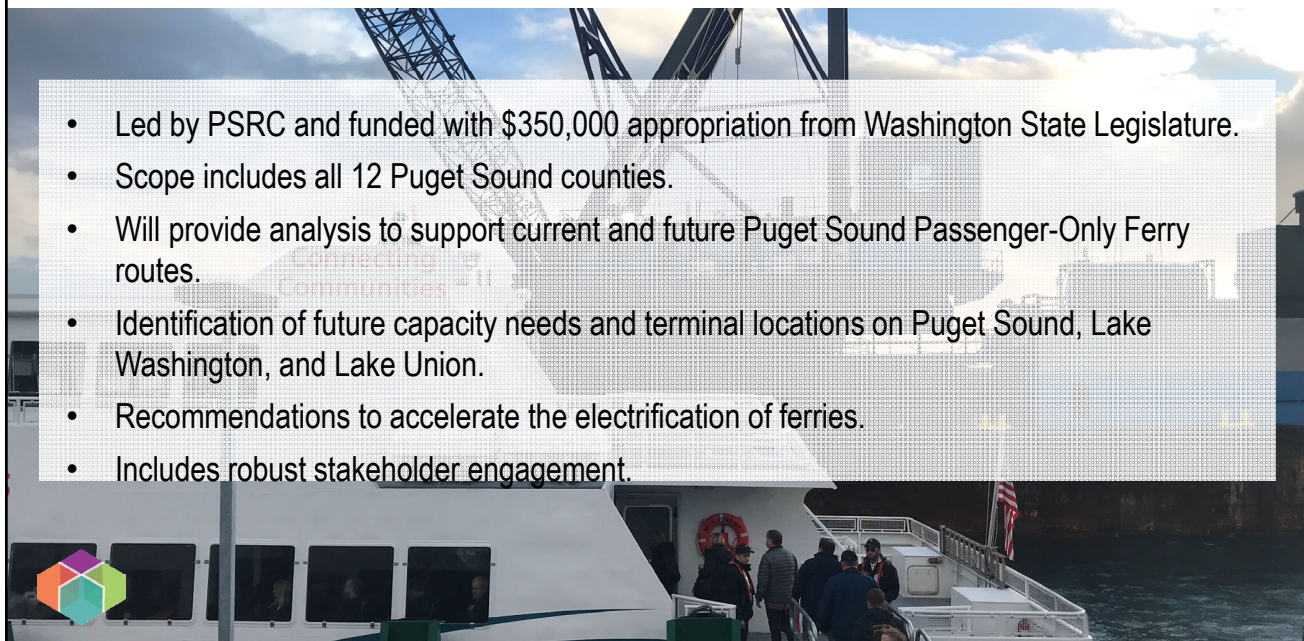


Kingston-Seattle Fast Ferry launched in November, 2018.

10

## 2019 Puget Sound Passenger-Only Ferry Study

- Led by PSRC and funded with \$350,000 appropriation from Washington State Legislature.
- Scope includes all 12 Puget Sound counties.
- Will provide analysis to support current and future Puget Sound Passenger-Only Ferry routes.
- Identification of future capacity needs and terminal locations on Puget Sound, Lake Washington, and Lake Union.
- Recommendations to accelerate the electrification of ferries.
- Includes robust stakeholder engagement.



## Overall Approach to Route Assessment

- Initial routes and terminal locations to study determined from outreach
- Evaluation criteria called out in legislation, includes:
  - Market potential and ridership
  - Travel time competitiveness with other modes
  - Terminal location and capacity
  - Capital and operating needs
  - Environmental factors
  - Financial factors
- Stakeholder feedback will inform any additional evaluation criteria/methods and review of route analyses



## Overall Approach and Schedule

### July – September 2019

- Initial Stakeholder engagement
  - Regions (RTPOs)
  - Countywide/subarea elected officials groups
  - Reach out to wide range of interested parties, including ports, transit agencies, tribes, etc.
- July 25 PSRC Operating Committee and Executive Board
  - Budget amendment and contract authority
- August: RFP for consultant services
- September: Consultant selection



13

## Overall Approach and Schedule

### October – December 2019

- Assessment of existing conditions
- Initial POF route and terminal identification
- Stakeholder outreach
- December 2019 TPB Check-in

### January – March 2020

- Preliminary route assessment and screening

### April 2020

- Stakeholder outreach



14



## Overall Approach and Schedule

### May – September 2020

- Final route assessment

### October 2020

- Stakeholder outreach

### November – December 2020

- Final report development
- Report to Transportation Policy Board

### January 2021

- Submit report/present to Washington State Legislature



15

Thank you.

**Gil Cerise**

Principal Planner

[gcerise@psrc.org](mailto:gcerise@psrc.org)



Puget Sound Regional Council