



## WEEKLY REPORT TO THE CITY COUNCIL

September 12, 2019

Members of the City Council  
City of Tacoma, Washington

**Dear Mayor and Council Members:**

### **ITEMS OF INTEREST**

1. Planning and Development Services Director Peter Huffman and Planning and Development Services Manager Brian Boudet provide a **status report on the Tacoma Dome Link Extension (TDLE) project, which is moving into the Draft Environmental Impact Statement (DEIS) stage**. Sound Transit Board has identified alignment and station location alternatives for study in DEIS. Sound Transit will conduct extensive outreach and public engagement efforts within the next six months. Attached are the report and the relevant motions approved by the Sound Transit Board.
2. Community and Economic Development Director Jeff Robinson, Public Works Director Kurtis Kingsolver and Planning and Development Services Director Peter Huffman are pleased to report that the **Sound Transit Executive Board has recommended \$3.5 million in Station Access Funding to complete the \$10.5 million construction funding package for the Hilltop Streetscape**. This recommendation will go to the full Sound Transit Board for consideration on September 26<sup>th</sup>.

This funding allocation was a result of a competitive process between jurisdictions in Pierce County, with approximately \$8 million in all being awarded. The City application was supported by the fact that streetscape design is now 100% complete. This \$2.5 million design (funded with a national award from the federal Transit Administration) was overseen by the Hilltop Engagement Committee, a neighborhood committee appointed by the City Council. It will fully compliment the Tacoma LINK Extension with multiple complete street features and neighborhood amenities and dramatically improve Station Access for the Hilltop neighborhood.

3. Peter Huffman reports that on October 16<sup>th</sup> through the 17<sup>th</sup>, at the Greater Tacoma Convention Center, the **Washington American Planning Association** will bring together more than 300 leading planners, academics, appointed and elected officials from around the Pacific Northwest to explore the best ways to go about *Shaping Communities That Thrive!* Speakers will inspire and educate conference attendees, present and discuss plans, projects, case studies and evaluations, research, theories, and methodologies. Sponsoring and/or exhibiting provides the City with an opportunity to participate in unique knowledge creation

and knowledge sharing with colleagues from all over the Pacific Northwest. PDS will be assisting with three tours for the conference:

**Foss Waterway, UWT, Brewery District Subarea Plan** – Walk through the ever-expanding UWT campus along the rails to trails Prairie Line Trail to the Thea Foss mixed-use waterfront (a superfund clean-up site) and on to the Freighthouse Square Transit Complex/new TOD developments. Then ride the Tacoma LINK back to UWT/Brewery district and finish in the old Heidelberg Brewery (now the home of the Seven Seas Brewery). Conversation about the role of SEPA Planned Actions and the benefits of multiple partnerships.

**Pt. Ruston Mixed-Use Center and Dune Peninsula Park Superfund Site Redevelopment** (Bus Tour) – Pt. Ruston Mixed-Use Center and Dune Peninsula Park Superfund Site Redevelopment: This mobile workshop will explore the complex process and successes of the redevelopment of the ASARCO copper smelter superfund site. Located on the waterfront with shared jurisdictional boundaries between the City of Tacoma and the City of Ruston, the site has been transformed through a public private partnership into the Pt. Ruston Mixed-Use Center and Dune Peninsula Park. The tour will illustrate how Federal, State, and local agencies partnered to create a destination to live, eat and recreate on the shores of Puget Sound.

**Downtown Historic Preservation Lessons Learned** – This free walking tour will showcase how preservation efforts have contributed to the revitalization of Tacoma's historic downtown. Learn about how the combination of arts, education, public and private partnerships, historic interpretation and pedestrian-friendly transit-oriented development shaped downtown. Case studies include the University of Washington Tacoma campus, the Prairie Line Trail, Elks McMenamins, and Old City Hall.

#### **STUDY SESSION/WORK SESSION**

4. The **City Council Study Session** of Tuesday, September 17, 2019, will be held in Room 16 of the Tacoma Municipal Building North, at Noon. Discussion items will include: (1) **Level of Service Case Studies**; (2) **Other Items of Interest**; (3) **Committee Reports**; and, (4) **Agenda Review and City Manager's Weekly Report**.

At Tuesday's Study Session, **Office of Management and Budget and Public Works staff will provide an in-depth look at an important best practice when considering facility investments.**

5. The updated **Tentative City Council Forecast** and **Consolidated Standing Committee Calendars** are attached for your information.

## **COUNCIL AGENDA**

6. On Tuesday's City Council agenda will be the first reading of several ordinances related to 2019 amendments to the Comprehensive Plan and Land Use Regulatory Code as recommended by the Planning Commission. Regarding Ordinance No. 28608, Council Member Mello is requesting Council consideration of the following motion, which will be included in the agenda:

**Motion to amend Ordinance No. 28608, the 2019 Amendment to the Comprehensive Plan, to remove the proposed change to the Hawthorne Hill zoning and land use designation, and maintain the current zoning of a portion of Hawthorn Hill immediately adjacent to the McKinley Mixed Use Center.**

On behalf of Council Member Mello, I am forwarding the attached Policy Development Worksheet regarding the policy concept of retaining zoning flexibility in this area.

## **MARK YOUR CALENDARS**

7. You have been invited to the following events:
- **Tacoma Historical Society's 2019 Destiny Dinner on Saturday, September 14<sup>th</sup>**, at the University of Puget Sound's Memorial Fieldhouse, located at 1500 North Warner. **Social hour is at 5:00 p.m., followed by the dinner and program at 6:00 p.m.**
  - **South Sound 911's Groundbreaking Ceremony on Thursday, September 19<sup>th</sup>, 10:00 a.m.**, at 3580 Pacific Avenue.
  - **Forterra's South Sound Luncheon on Thursday, September 19<sup>th</sup>, Noon**, at the Greater Tacoma Convention Center, located at 1500 Commerce Street.
  - **On September 19<sup>th</sup>, as part of Welcoming Week, local restaurants are partnering with the Tacoma Community House for the 7<sup>th</sup> Annual FLAVOR Dining Fundraiser** to stand up for immigrants and refugees. More information on participating restaurants can be found at: <https://www.tacomacommunityhouse.org/events/flavor2019/>
  - **Greater Tacoma Peace Prize 2019 Laureate Recognition Banquet for Mr. Wille C. Stewart, Sr. on Friday, September 20<sup>th</sup>, 5:30 p.m.**, at Chris Kuntzen Hall at Pacific Lutheran University, located at 12180 Park Avenue South.

- **Tacoma Reads: A Conversation with Tommy Orange Hosted by Mayor Woodards, on Friday, September 20<sup>th</sup> at 6:30 p.m.**, at the Rialto Theater, located at 310 South 9th Street.
- **Asia Pacific Cultural Center's Third Annual Chuseok Korean Festival, *Honoring Yesterday-Building Tomorrow*, on Saturday, September 21<sup>st</sup>, 11:00 a.m. to 5:00 p.m.**, at 4851 South Tacoma Way.
- **Chinese Reconciliation Project Foundation 2019 Tacoma Moon Festival, including the "Fuzhou (China) Day" celebration, on Saturday, September 21<sup>st</sup>, 1:00 to 7:00 p.m.**, at the Tacoma Chinese Reconciliation Park, located at 1741 North Schuster Parkway.
- **Official launch party for the Tacoma Public Library's Eastside Microlibrary on Saturday, September 28<sup>th</sup> from 11:00 a.m. – 1:00 p.m.** at the Eastside Community Center, located at 1721 East 56th Street.
- **Hilltop Artists Silent Auction (10:30 a.m.) and Better Futures Luncheon (11:30 a.m.) on Tuesday, October 8<sup>th</sup>**, at the Hotel Murano's Bicentennial Pavilion, located at 1320 Broadway.
- **Graduate Tacoma's 2019 Cradle to Career Luncheon on Thursday, October 24<sup>th</sup>, 11:00 a.m. to 1:00 p.m.**, at the Greater Tacoma Convention Center, located at 1500 Commerce Street.

Sincerely,



Elizabeth A. Pauli  
City Manager

EAP:crh  
Attachments



**TO:** Elizabeth Pauli, City Manager  
**FROM:** Peter Huffman, Director, Planning and Development Services  
Brian Boudet, Manager, Planning and Development Services  
**SUBJECT:** Tacoma Dome Link Extension Project Status  
**DATE:** September 11, 2019

BEB

This memo provides a status report and next steps regarding the Tacoma Dome Link Extension (TDLE) project. As a part of the Sound Transit 3 (ST3) Plan approved by voters in 2016, the TDLE will extend the regional light rail system nearly 10 miles via mostly elevated tracks between Federal Way and Tacoma. This project includes four new light rail stations in areas near South Federal Way, Fife, East Tacoma, and the Tacoma Dome.

The overall schedule for the TDLE is as follows:

- Planning (2017-2022)
  - Phase 1 – Alternatives Development (2017-2019)
  - Phase 2 – Draft Environmental Impact Statement (DEIS) (2019-2021)
  - Phase 3 – Final Environmental Impact Statement (FEIS) (2021-2022)
- Design (2022-2025)
- Construction (2025-2030)
- Start of Service (2030)

The TDLE is currently at the juncture of having completed *Planning Phase 1* and moving into *Planning Phase 2*. On July 25, 2019, the Sound Transit Board approved two motions outlining preferred alternative(s) and other alternatives to study in DEIS: Motion No. M2019-75 pertaining to all segments of the TDLE, except the Tacoma Dome segment, and Motion No. M2019-77 pertaining to the Tacoma Dome segment.

With respect to the Tacoma Dome and the East Tacoma station areas, the Board decided to move forward the following alternatives into the DEIS process:

#### **Tacoma Dome**

##### **Preferred Alternative**

- TD2: Elevated station in vicinity of East 25th Street, west of G Street.

##### **Other EIS Alternatives**

- TD3: Elevated station in the vicinity of East 25th Street, east of G Street.
- TD4 East In-Street: Elevated station located over East 26th Street, closer to D Street.

#### **East Tacoma**

##### **Preferred Alternative**

- ET3A: Elevated station in the vicinity of East 26th Street or East 27th Street near Portland Avenue and north of Interstate 5 with elevated guideway in the vicinity of East 25th Street or East 26th Street connecting to TD2 or TD3.

##### **Other EIS alternative**

- ET3B: Elevated station in the vicinity of East 26th Street or East 27th Street near Portland Avenue and north of Interstate 5 with elevated guideway in the vicinity of East 26th Street connecting to TD4.



The Board's action generally reflects the comments provided, during *Planning Phase 1*, by the City Council, the Planning Commission, the Transportation Commission, the Sustainable Tacoma Commission, and many interested organizations and individuals in the Tacoma-Pierce County area. However, the "Cut-and-Cover" alternative in the Tacoma Dome station area that was strongly recommended by many stakeholders is not being moved forward. Instead, the Board directs Sound Transit staff to examine options for the alignment and station close to the Sounder corridor.

Sound Transit staff have indicated that the "Close-to-Sounder" alternative will be part of the scope of work as they are starting to work with TDLE-affected jurisdictions, property owners and stakeholders to carry out the Board's directives. Their work for the next six months primarily includes reviewing DEIS methodologies, developing design principles and assumptions, and completing 10 percent design. Extensive outreach and public engagement efforts are expected to be conducted by Sound Transit staff in November – December 2019 and February – March 2020.

Attached are Sound Transit Motions No. M2019-75 and No. M2019-77. For more information on the TDLE project, please visit [www.soundtransit.org/tdlink](http://www.soundtransit.org/tdlink).

## **Motion No. M2019-75**

A motion of the Board of the Central Puget Sound Regional Transit Authority identifying the preferred alternative(s) and other alternatives for study in the Tacoma Dome Link Extension Environmental Impact Statement, for all segments except the Tacoma Dome segment.

### **Background**

Early scoping under SEPA for the Tacoma Dome Link Extension (TDLE) project was conducted from April 2 through May 3, 2018, and public comment was received. The TDLE project would expand Link light rail transit service from the Federal Way Transit Center to the Tacoma Dome Station. The project corridor is approximately 10 miles long and is part of the Sound Transit 3 Plan (ST3) of regional transit system investments, funding for which was approved by voters in the region in 2016.

The mode and corridor served for the proposed project were identified through a multi-year planning process, including the Sound Transit Regional Transit Long-Range Plan and ST3 Plan. Through the local alternatives evaluation and screening process, Sound Transit ultimately developed the representative project included in the ST3 Plan and, based on additional public engagement and technical analysis, advanced various light rail transit alternatives with design options for further study. Each light rail transit alternative includes four stations that serve the following areas: South Federal Way, Fife, East Tacoma (near Portland Avenue and Interstate 5) and Tacoma Dome.

Evaluation of the alternatives identified by the Board will be conducted in cooperation with the Federal Transit Administration (FTA). Before committing federal funds to TDLE, the FTA is required to undertake environmental review in compliance with the National Environmental Policy Act (NEPA). As the public agency proposing the project, Sound Transit is required to comply with the State Environmental Policy Act (SEPA). The FTA, as the federal lead agency under NEPA, and Sound Transit, as the state lead agency under SEPA, have determined that the proposed project may have probable significant adverse environmental impacts. To satisfy both NEPA and SEPA requirements, the agencies are preparing a combined NEPA/SEPA EIS for the project.

The FTA and Sound Transit conducted Environmental Impact Statement (EIS) scoping from April 1 through May 1, 2019, under SEPA and NEPA, for the TDLE project. Three public scoping meetings and a meeting for agencies and tribes were held during this period, as well as an online open house from April 1 through May 1, 2019. FTA and Sound Transit asked for comments on the draft Purpose and Need statement; the alternatives that should be evaluated in the EIS; and social, economic, environmental, and transportation issues to be evaluated in the EIS. Comments were accepted by mail, email, online comment forms, transcribed phone messages, and through comment forms and via a court reporter at the scoping meetings. Input from the EIS scoping period was documented in the *Tacoma Dome Link Extension Scoping Summary Report* (May 2019) and was made available on the project website.

The local planning and alternatives development processes included technical analysis, public engagement, and input from affected local, state, and federal agencies and tribes. Sound Transit developed an initial range of alternatives from agency and public input during the SEPA early scoping process held April 2 through May 3, 2018. The project's Elected Leadership Group (ELG), a comprehensive group of elected officials that represent the service corridor, and the Stakeholder Group (SG), an advisory group consisting of members of communities along the alignment appointed by the ELG, then recommended narrowing and refining these alternatives based on additional analysis and community, agency, and tribal input.

The ELG recommended the following alternatives for inclusion in the EIS:

- **South Federal Way** – SF2 West (preferred alternative) and SF 2 East, SF 8/9
- **Fife** – F3B, SR 99 alignment west of station (preferred alternative) and F3A I-5 alignment west of station
- **East Tacoma** – ET3A (preferred alternative) and ET3B, ET6
- **Tacoma Dome** - TD2 (preferred alternative) and TD2 cut and cover, TD3, TD4 East In-Street

Subsequent to the ELG recommendation, the City of Tacoma requested also evaluating cut and cover stations at TD3 and TD4 East In-Street.

Additionally, potential station locations at ET 6 and SF 2 East were included in the ELG recommendation, however the potential opportunities of these station locations can be accomplished through design refinements to stations ET3A/ ET3B and SF2 West respectively. Therefore ET 6 and SF 2 East have not been included as separate alternatives in the EIS.

On July 11, 2019, FTA as the lead agency for the NEPA EIS process provided the following to Sound Transit:

#### **Tacoma Dome Station Area**

- The cut-and-cover alternatives should be removed from going forward into the NEPA EIS, based on Sound Transit's analysis, briefings, the alignment tour, tribal concerns, and conclusions described in the February 2019 technical memorandum...
- FTA concurs with TD2, TD3, and TD4 elevated alternatives moving forward into the NEPA EIS.

#### **East Tacoma Station Area**

- FTA concurs with preferred station alternative at ET3A, with ET3B elevated alternative moving forward into the NEPA EIS.

#### **Fife Station Area**

- FTA concurs with Fife 3 as a preferred station alternative.
- FTA does not concur with a "preferred" alternative alignment (I-5 vs. SR-99) identified for this location. Both alignment alternatives (I-5 and SR-99) should move forward into the NEPA EIS without one being identified as "preferred".

#### **South Federal Way Station Area**

- FTA concurs with SF2 West as the preferred station alternative, and SF 8/9 elevated alternatives moving forward into the NEPA EIS.
- FTA concurs with the I-5 alignment.

## **Motion**

Recognizing the objectives included in the System Expansion Implementation Plan (SEIP) of identifying a preferred alternative and other alternatives under SEPA and NEPA prior to preparing environmental documents in order to accelerate overall project delivery, and given the commitments to schedule and budget noted in the Partnering Agreements and Statement of Partnering Intent made by the jurisdictions along the project corridor, the Board will consider identifying a "Preferred Alternative" and "Other EIS alternative(s)", for study within any given segment as follows:

- Preferred Alternative and Other EIS Alternative(s): Incorporates refinements to the representative project, consistent with the scope identified in the ST3 Plan, based on recommendations from the Elected Leadership Group and/ or input from the Stakeholder Group, scoping comments from the public, agencies and Tribes and Sound Transit's technical analysis.



- As part of the EIS analysis, Sound Transit will establish estimates of the costs of delivering the Preferred Alternative and Other EIS Alternative(s). The estimates would include any necessary modifications identified during the EIS analysis that may be needed to meet ST3 voter-approved requirements and would be calculated based on delivering the full project, not individual segments. These estimates would reflect updates to the costs of construction, real estate, EIS mitigation requirements, etc.

After publication of the draft EIS and receipt of public comment, the Board intends to confirm or modify the preferred alternative.

As such, it is hereby moved by the Board of the Central Puget Sound Regional Transit Authority that, based on Board's review of the findings from the alternatives development process; the identification of third-party funding consistent with the partnering agreements with local jurisdictions; public and agency scoping comments; tribal comments; input from the SG (May 29, 2019) and ELG (June 14, 2019); the Partnering Agreements with the Cities of Tacoma, Fife, Milton, and Federal Way; the Statement of Partnering Intent with the Puyallup Tribe of Indians, the System Expansion Transit Integration Agreement with King County Metro, input from FTA, and other information developed to date, the preferred alternative, and other alternatives for the TDLE Draft EIS are identified as follows for all segments except the Tacoma Dome station area:

### **East Tacoma**

#### **Preferred Alternative**

- ET3A: Elevated station at East Tacoma in the vicinity of E 26<sup>th</sup> St. or E 27<sup>th</sup> St. near Portland Avenue and north of Interstate 5 with elevated guideway in the vicinity of E 25<sup>th</sup> St. or E 26<sup>th</sup> St. connecting to TD2 or TD3. Option for an elevated station spanning Portland Avenue should be studied.

#### **Other EIS alternative**

- ET3B: Elevated station at East Tacoma in the vicinity of E 26<sup>th</sup> St. or E 27<sup>th</sup> St. near Portland Avenue and north of Interstate 5 with elevated guideway in the vicinity of E 26<sup>th</sup> St. connecting to TD4. Option for an elevated station spanning Portland Avenue should be studied.

The Board also directs staff to work with the City of Tacoma, Puyallup Tribe, Port of Tacoma, local transit agencies, the City's TOD Advisory Group and other stakeholders to examine opportunities to ensure appropriate multi-modal access, particularly non-motorized, drop-off and transit access, to this station, as well as how the station location and design can best support appropriate transit-oriented development. A particular focus will need to be on connections between the station and the neighborhoods and key destinations on the south side of I-5, including exploration of a pedestrian and bicycle bridge.

### **Fife**

#### **Preferred Alternative**

- Fife 3: Elevated station in Fife north of 15<sup>th</sup> St.

#### **Other EIS alternatives**

- Fife A (I-5 Alignment): Elevated guideway alignment to the north of the station in the vicinity of I-5 and to the west of the station in the vicinity of I-5.

- Fife B (SR 99 Alignment): Elevated guideway alignment to the north of the station in the vicinity of I-5 and to the west of the station on the south side of SR 99.

The Fife station includes approximately 500 park-and-ride spaces. Additionally, the Board directs staff to examine opportunities to establish appropriate non-motorized, drop-off and transit access to this station and work with the City of Fife and stakeholders to support transit oriented development around the station.

### **South Federal Way**

#### **Preferred Alternative**

- SF2 West: Elevated station in South Federal Way along Enchanted Parkway near S 352<sup>nd</sup> St. in the vicinity of I-5.

#### **Other EIS alternatives**

- SF 8/9: Elevated station in South Federal Way along I-5 near S 356<sup>th</sup> St. in the vicinity of I-5.

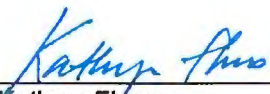
The South Federal Way station includes approximately 500 park-and-ride spaces. Additionally, the Board directs staff to work with the City of Federal Way and stakeholders to support transit oriented development around the station and examine opportunities to establish appropriate non-motorized, drop-off and transit access to this station.

This motion also authorizes staff to complete the Draft EIS, using the preferred alternative(s) and other alternatives identified above. The Board will not make a final decision on the project to be built until after completion of the Final EIS, which is anticipated to be published in 2022.

APPROVED by the Board of the Central Puget Sound Regional Transit Authority at a regular meeting thereof held on July 25, 2019.

  
\_\_\_\_\_  
Kent Keel  
Board Vice Chair

**Attest:**

  
\_\_\_\_\_  
Kathryn Flores  
Board Administrator

## **Motion No. M2019-77**

A motion of the Board of the Central Puget Sound Regional Transit Authority identifying the preferred alternative(s) and other alternatives for study in the Tacoma Dome Link Extension Environmental Impact Statement for the Tacoma Dome station area, with the expectation that prior to the Board meeting staff continue to work with the Federal Transit Administration in the hope of a revised opinion so the cut and cover options can be studied.

### **Motion**

Recognizing the objectives included in the System Expansion Implementation Plan (SEIP) of identifying a preferred alternative and other alternatives under SEPA and NEPA prior to preparing environmental documents in order to accelerate overall project delivery, and given the commitments to schedule and budget noted in the Partnering Agreements and Statement of Partnering Intent made by the jurisdictions along the project corridor, the Board will consider identifying a "Preferred Alternative" and "Other EIS alternative(s)", for study within any given segment as follows:

- Preferred Alternative and Other EIS Alternative(s): Incorporates refinements to the representative project, consistent with the scope identified in the ST3 Plan, based on recommendations from the Elected Leadership Group and/ or input from the Stakeholder Group, scoping comments from the public, agencies and Tribes and Sound Transit's technical analysis.
- As part of the EIS analysis, Sound Transit will establish estimates of the costs of delivering the Preferred Alternative and Other EIS Alternative(s). The estimates would include any necessary modifications identified during the EIS analysis that may be needed to meet ST3 voter-approved requirements and would be calculated based on delivering the full project, not individual segments. These estimates would reflect updates to the costs of construction, real estate, EIS mitigation requirements, etc.

After publication of the draft EIS and receipt of public comment, the Board intends to confirm or modify the preferred alternative.

As such, it is hereby moved by the Board of the Central Puget Sound Regional Transit Authority that, based on Board's review of the findings from the alternatives development process; the identification of third-party funding consistent with the partnering agreements with local jurisdictions; public and agency scoping comments; tribal comments; input from the SG (May 29, 2019) and ELG (June 14, 2019); the Partnering Agreements with the Cities of Tacoma, Fife, Milton, and Federal Way; the Statement of Partnering Intent with the Puyallup Tribe of Indians, the System Expansion Transit Integration Agreement with King County Metro, input from FTA, and other information developed to date, the preferred alternative, and other alternatives for the TDLE Draft EIS for the Tacoma Dome station area is identified as follows:

### **Tacoma Dome**

#### **Preferred Alternative**

- TD2: Elevated station at Tacoma Dome station in vicinity of E 25<sup>th</sup> St., west of G Street. Options for the alignment and station close to the Sounder corridor should be examined.

#### **Other EIS Alternatives**

- TD3: Elevated station at Tacoma Dome station in vicinity of E 25<sup>th</sup> St., east of G Street. Options for the alignment and station close to the Sounder corridor should be examined.

- TD4 East In-Street: Elevated station at Tacoma Dome station located over E 26<sup>th</sup> St. Station location should be examined closer to D Street.

Recognizing that the Tacoma Dome Station is the stop for Downtown Tacoma and the South Sound's regional multi-modal hub, the Board also directs staff to work with the City of Tacoma, Puyallup Tribe, local transit agencies, Amtrak, the City's TOD Advisory Group and other stakeholders to ensure the Tacoma Dome Station represents the highest possible level of urban design and integration and catalyzes transit-oriented development in the neighborhood.

This motion also authorizes staff to complete the Draft EIS, using the preferred alternative(s) and other alternatives identified above. The Board will not make a final decision on the project to be built until after completion of the Final EIS, which is anticipated to be published in 2022.

APPROVED by the Board of the Central Puget Sound Regional Transit Authority at a regular meeting thereof held on July 25, 2019.

  
\_\_\_\_\_  
Kent Keel  
Board Vice Chair

**Attest:**

  
\_\_\_\_\_  
Kathryn Flores  
Board Administrator

**City of Tacoma 2019  
City Council Forecast Schedule**

Date	Meeting	Subject	Department	Background
<b>September 17, 2019</b>	City Council Study Session (TMB Council Chambers, Noon)	Level of Service Case Studies	OMB	An in-depth look at an important best practice when considering facility investments.
	City Council Meeting (TMB Council Chambers, 5:00 PM)	2019 Amendments to the Comprehensive Plan and Land Use Regulatory Code-1st Reading	PDS	

**City of Tacoma 2019  
City Council Forecast Schedule**

Date	Meeting	Subject	Department	Background
<b>September 24, 2019</b>	City Council Study Session (TMBN 16, Noon)	Tacoma Housing Authority Update	THA	
		Internal Internship Program	HR	
		Executive Session - Potential Litigation	CAO	
	Special Committee of the Whole Meeting (TMBN 16, 3:00)	Legislative Agenda Workshop	CMO/GRO	
	City Council Meeting (TMB Council Chambers, 5:00 PM)	2019 Amendments to the Comprehensive Plan and Land Use Regulatory Code-Final Reading	PDS	

**City of Tacoma 2019  
City Council Forecast Schedule**

Date	Meeting	Subject	Department	Background
October 1, 2019	City Council Study Session (TMB Council Chambers, Noon)	Tacoma Permit Advisory Task Force Update	DM McCarthy & TPATF	
		Tideflats Interim Regulations Reauthorization	PDS	Overview of the Interim Tideflats Regulations for reauthorization consideration prior to the public hearing that evening.
	Special Committee of the Whole Meeting (TMBN 16, 3:00)	Stability Site Update	NCS	
	City Council Meeting (TMB Council Chambers, 5:00 PM)	Tideflats Interim Regulations Reauthorization Public Hearing	PDS	
October 8, 2019	City Council Study Session (TMB Council Chambers, Noon)	Tideflats Interim Regulations Reauthorization Public Hearing Testimony Summary	PDS	Summary of comments from the public hearing related to the Interim Tideflats Regulations reauthorization. First reading of the ordinance is schedule for that evening.
	Special Committee of the Whole Meeting (TMBN 16, 3:00)	City Manager's Competency Model	Council/HR	City Council Members will have an opportunity to participate in a competency card sort exercise to prioritize the competencies they value most in a City Manager.
	City Council Meeting (TMB Council Chambers, 5:00 PM)	First Reading of the Tideflats Interim Regulations Reauthorization Ordinance	PDS	
October 15, 2019	City Council Study Session (TMB Council Chambers, Noon)	Federal Legislative Update	CMO/Simon & Co	Tentative date for a briefing from our Federal Lobbyist in Washington D.C.
		Proposed Amendments to TMC Chapter 12.08	ESD	Overview/Summary of proposed changes to Chapter 12.08 of the Tacoma Municipal Code (Sanitary Sewer/Stormwater Code)
	City Council Meeting (TMB Council Chambers, 5:00 PM)	Final Reading of the Tideflats Interim Regulations Reauthorization Ordinance	PDS	
October 22, 2019	Joint Council/Public Utility Board Study Session (TMBN 16, Noon)	LEAP/SBE Workforce Development & Equity Contracting Issues	CED	
		Cushman Substation Update	TPU/PDS	Presentation on the planning effort for the Cushman Substation.
		North 21st Trees Update	TPU	
		Classification and Compensation Study Update	HR	
	City Council Meeting (TMB Council Chambers, 5:00 PM)			



Community Vitality and Safety			
<b>Committee Members: Blocker (Chair), Beale, Thoms, Ushka, Alternate-Hunter</b> <b>Executive Liaison: Linda Stewart; Staff Support - Bucoda Warren</b>		<b>2nd and 4th Thursdays</b> <b>4:30 p.m.</b> <b>Room 248</b>	<b>CBC Assignments:</b> • Citizen Police Advisory Committee • Human Services Commission • Human Rights Commission • Housing Authority • Commission on Disabilities • Library Board • Tacoma Community Redevelopment Authority
<b>September 12, 2019</b>	Tacoma Area Commission on Disabilities Interviews	Doris Sorum, City Clerk	Interviews for the youth position on the Tacoma Area Commission on Disabilities
	State of Black Tacoma (Informational)	Diane Powers, Director, Office of Equity and Human Rights; Korbett Mosesly, Management Analyst, OEHR;	A presentation highlighting disparities in health care, education, wealth, housing, incarceration rates, low birth weight, and infant mortality.
<b>Future</b>			
<b>September 26, 2019</b>	Domestic Violence Strategic Alliance (Informational)	Linda Stewart, Director, Neighborhood and Community Services	
	Closed Captioning Resolution and Education Campaign Update (Request for Ordinance)	Lucas Smiraldo, Policy Analyst II, Office of Equity and Human Rights; Todd Holloway, Chair, Tacoma Area Commission on Disabilities	The Tacoma Area Commission on Disabilities (TACOD) is requesting support from the Community, Vitality and Safety Committee to recommend a resolution that will promote the practice of using closed captioning on televisions in establishments frequented by people in Tacoma including pubs, restaurants, bars, waiting rooms and other shared public spaces. This is an update to the conversation on July 11.
	Neighborhood Council Program (Request for Ordinance)	Allyson Griffith, Neighborhood Enhancement Team Manager, NCS; and Bucoda Warren, Senior Management Fellow, NCS	NCS will provide an update on the proposed changes to the NC program and be asking for a recommendation to proceed with an ordinance adopting changes.
<b>October 10, 2019</b>	Community Engagement	Tanisha Jumper, Director, Media and Communications	
	Code Compliance Pilot Update (Informational)	NCS	Update on receivership pilot program.
	Neighborhood and Community Services Community Mobilization Contracts (Informational)	Allyson Griffith, Neighborhood Enhancement Team Manager, NCS; and Kristin Ely, Management Analyst, NCS	Information update on the status of community mobilization efforts funded by Neighborhood and Community Services contracts.



<b>Economic Development Committee</b>			
<b>Committee Members:</b> Thoms (Chair), Hunter, McCarthy, Ushka <b>Alternate-Beale</b> <b>Executive Liaison:</b> Tadd Wille; <b>Staff Support - Lynda Foster</b>		<b>2nd, 4th, and 5th Tuesdays</b> <b>10:00 a.m.</b> <b>Room 248</b>	<b>CBC Assignments:</b> •Tacoma Arts Commission •Greater Tacoma Regional Convention Center Public Facilities District •Foss Waterway •City Events and Recognition Committee
<b>September 24, 2019</b>	TPU Economic Development Strategic Plan	Michael Catsi, TPU's Economic Development Manager	Informational briefing on the new TPU Economic Development Strategic Plan, outlining initiatives and priorities.
	Sidewalk Cafes	Planning and Development Services	
<b>Future</b>			
<b>October 8, 2019</b>	Green economy policy recommendations	Gloria Fletcher, Business Development Manager, CED	Third presentation on the Tacoma green job economy, with staff recommendations for policy updates
<b>October 22, 2019</b>			

Government Performance and Finance Committee			
<b>Committee Members:</b> Ibsen (Chair), Blocker, Hunter, Mello, Alternate-Thoms <b>Executive Liaison:</b> Andy Cherullo; <b>Staff Support -</b> Latasha Ware		<b>1st and 3rd Tuesday</b> <b>10 a.m.</b> <b>Room 248</b>	<b>CBC Assignments:</b> •Public Utility Board •Board of Ethics •Audit Advisory Board •Civil Service Board
September 17, 2019	Tacoma Anchor Institutions Network	Tanisha Jumper, Media and Communications Director; Bucoda Warren, Senior Management Fellow	Enterprises such as hospitals and schools that are rooted in their community are considered anchor institutions. These anchors increasingly are looking to align their resources to build stronger community partnerships and create more inclusive local economies. This conversation will follow up on the recent kick off of the Tacoma Anchor Collaborative and next steps.
	Council Rules on Walk on Amendments (Update to include committee suggestions)	Bill Fosbre, City Attorney	Proposed rules for transparency and accountability to the public regarding last minute amendments to important legislation.
Future			
October 1, 2019	TERS Update	Tim Allen, Retirement Director	Informational Briefing on the investing strategies and any divestment of fossil fuels carried out by the TERS board.
	Title 18 – Employment Standards – Minimum Wage and Paid Sick Leave	Danielle Larson, Tax & License Manager	recommendation to repeal the City's minimum wage and paid sick leave laws. As of January 1, 2018, the State of Washington has paid leave laws that benefit Tacoma workers and the State's minimum wage will be higher than the City's minimum wage effective January 1, 2020
October 15, 2019			

<b>Infrastructure, Planning and Sustainability Committee</b>			
<b>Committee Members:</b> Mello (Chair), Beale, Ibsen, McCarthy, Alternate-Hunter <b>Executive Liaison:</b> Kurtis Kingsolver; <b>Staff Support -</b> Rebecca Boydston		<b>1st and 3rd Wednesdays</b> <b>4:30 p.m.</b> <b>Room 248</b>	<b>CBC Assignments:</b> -Sustainable Tacoma Commission •Planning Commission •Landmarks Preservation Commission •Board of Building Appeals •Transportation Commission
<b>September 18, 2019</b>	Pacific Avenue Corridor Planning Update	Brian Boudet, Division Manager, Planning and Development Services	Update on the planning efforts along the Pacific Avenue Transportation Corridor.
	Electric Vehicle Updates	Kristi Lynett, Office of Environmental Policy and Sustainability	
<b>Future</b>			
<b>October 2, 2019</b>	Pierce Transit and City Goal Alignment	Alex Mather, Government Relations Officer, Pierce Transit	Alignment and partnership opportunities for City and Pierce Transit.
	Transportation Commission Work Plan and Accomplishments	Jennifer Kammerzell, Project Manager, Public Works	Discussion of Transportation Commission Work Plan.
	Sidewalk Projects and Missing Links Updates and Progress	Reid Bennion, Management Analyst, Public Works	Update on Public Works' current efforts to collect data of sidewalks condition.
<b>October 16, 2019</b>	Electric Vehicle Updates	Lisa Rennie, Senior Power Analyst, Tacoma Public Utilities	A presentation from Tacoma Public Utilities regarding recent State legislation and related programming for electric vehicle adoption.
	Code Updates for Electric Vehicle Adaptation (Tentative)		



**CITY OF TACOMA  
OFFICE OF THE CITY COUNCIL  
POLICY DEVELOPMENT WORKSHEET**

**TO:** Mayor & City Council

**FROM:** Council Member Ryan Mello and Assistant to the City Manager Anita Gallagher

**COPIES TO:** Elizabeth Pauli, City Manager; Tadd Wille, Deputy City Manager; Bill Fosbre, City Attorney

**SUBJECT:** **Proposed Amendment to the 2019 Amendment to the Comprehensive Plan, Ord. #19-0940 Pertaining to Hawthorne Hill Zoning and Land Use Designation.**

**DATE:** September 10, 2019

---

## **Section A. Formative Stage of Development**

### **1. Problem Statement**

This amendment would remove a proposed reduction in the Comprehensive Plan Future Land use map intensity, and maintain the current zoning of a portion of Hawthorne Hill immediately adjacent to the McKinley Mixed Use Center. The currently proposed reduction in intensity would limit potential for transit-oriented development in an area within walking distance of the Dome District transit stations, including future light rail. The current zoning and Comprehensive Plan Land Use Designation should be retained until further zoning and land use study, including a view analysis, can be completed.

### **2. Policy Concept**

Retaining zoning flexibility for this site would enable a broader neighborhood conversation regarding the potential for new housing options in close proximity to transit, within a walking distance of a retail business district, and supporting improved livability within the neighborhood, while involving local residents in the decisions that affect them. This approach is supportive of the following Tacoma 2025 Indicators:

**Economy/Workforce:** *Equity Index Score:* Very Low Opportunity

Increase the number of infrastructure projects and improvements that support existing and new business developments.

Increase the percentage of people relocating to the city and affordability of housing compared to neighboring jurisdictions.



City Manager's Office  
City of Tacoma, Washington

Anita Gallagher  
[Anita.gallagher@cityoftacoma.org](mailto:Anita.gallagher@cityoftacoma.org)

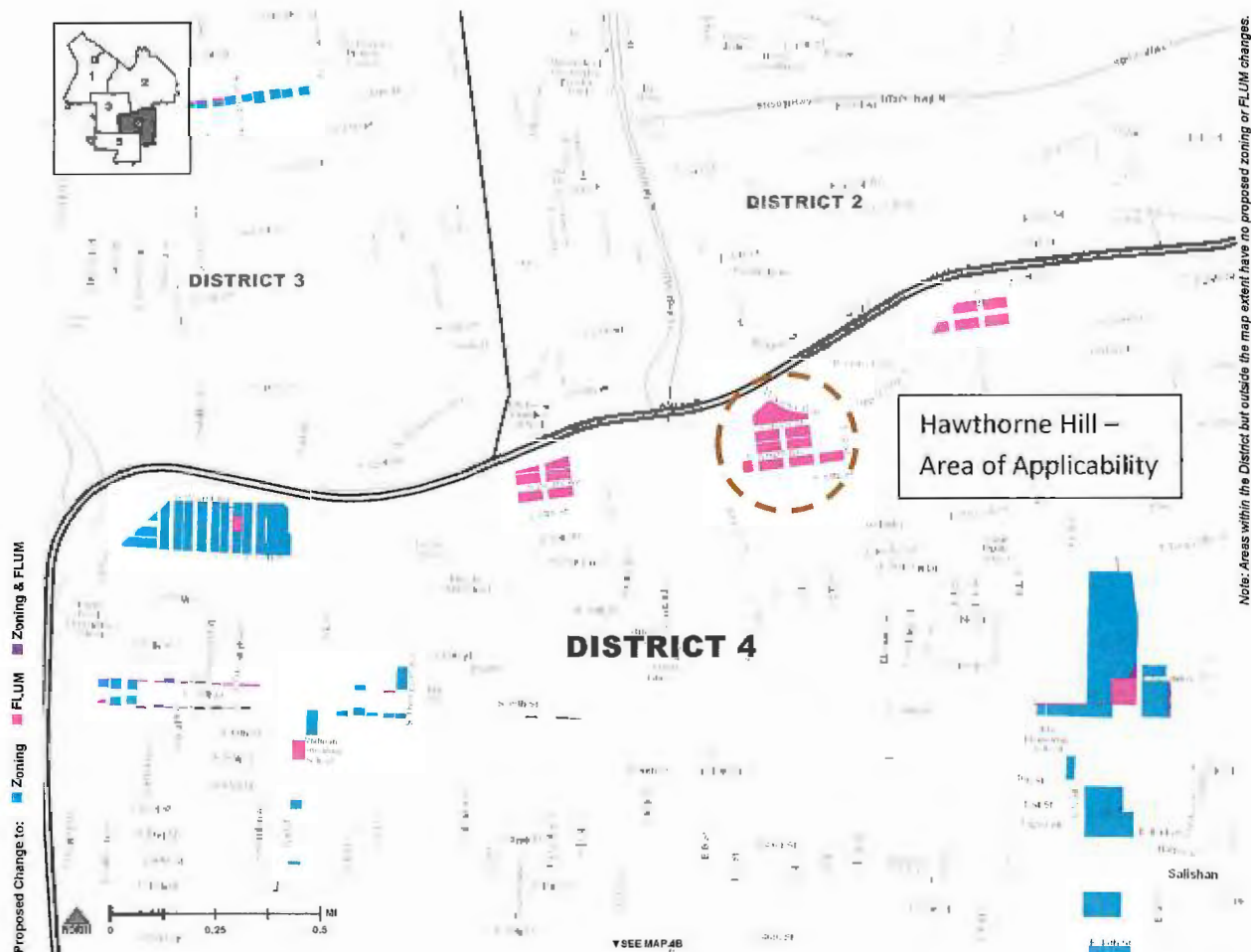
**Livability: Equity Index Score: Moderate Opportunity**

Improve access and proximity by residents to diverse income levels and race/ethnicity to community facilities, services, infrastructure, and employment.

Increase the number of Complete Compact Communities/ 20-Minute Neighborhoods throughout the city.

### 3. Policy Scope

The following map depicts the general location of the proposed amendment:

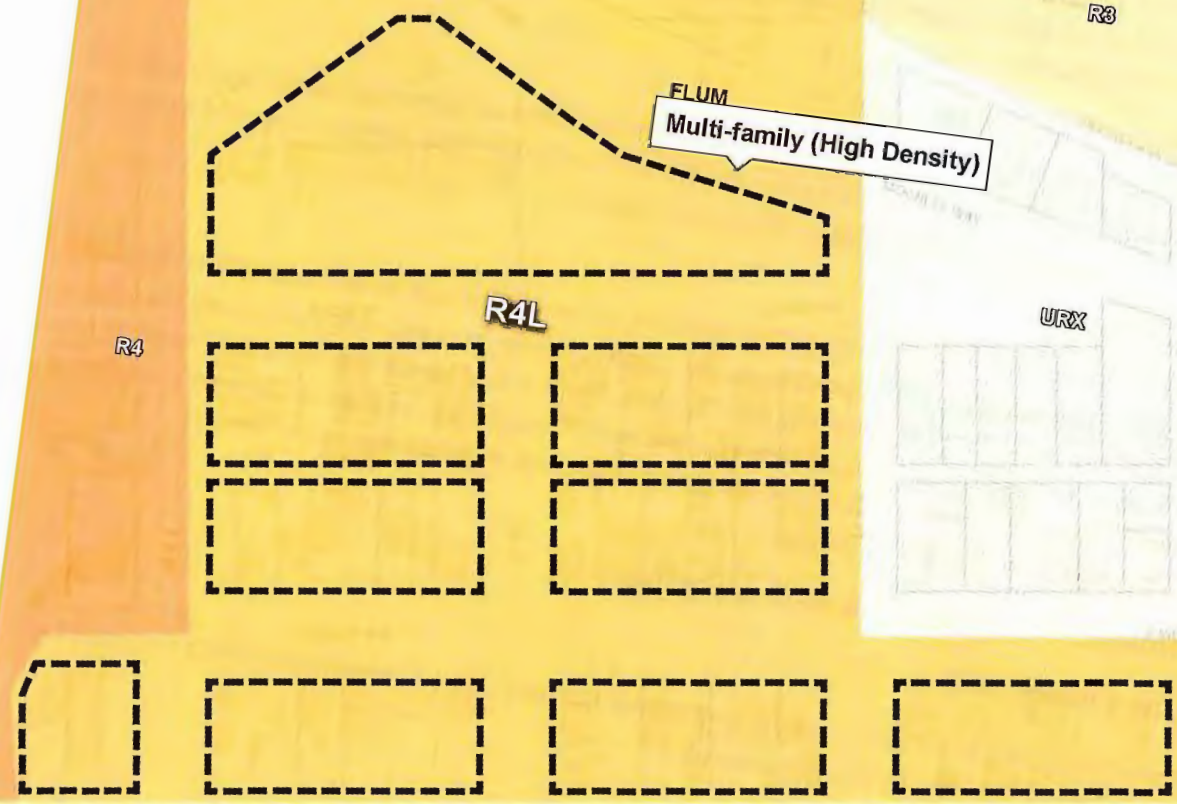




The following map depicts the specific parcels affected by the proposed amendment and the current Comprehensive Plan Land Use Designation and Zoning Classifications:

### Current Land Use Designation & Zoning

 Area Reviewed



## **Section B. Policy Vetting and Review**

### **4. Policy Introduction**

The 2019 Amendments to the Comprehensive Plan and Land Use Regulatory Code will be presented for First Reading of Ordinance on September 17, 2019. The intent of this policy proposal is to introduce the amendment to the Future Land Use Map Implementation Ordinance at First Reading for consideration by the City Council.

### **5. Stakeholder Engagement**

This policy would directly affect the property owners and residents of the parcels currently proposed for a Comprehensive Plan map change, as well as residents to the South of the subject properties, as well as residents and businesses in the McKinley Mixed-use Center.

### **6. Impact Analysis**

There are no immediate impacts of the policy proposal, as the amendment would retain the current Zoning and Comprehensive Plan Map designation. Area residents have expressed some concern over view impacts from potential high-density development which would be studied as part of a separate legislative process. Any future consideration for zoning or Comprehensive Plan amendments relating to this area would be processed in accordance with the procedural requirements of the Growth Management Act and Tacoma Municipal Code.

## **Section C. Consideration and Adoption**

### **7. City Council Vote**

The proposed amendment will be introduced at First Reading of the Comprehensive Plan Ordinance at the September 17, 2019 City Council meeting.