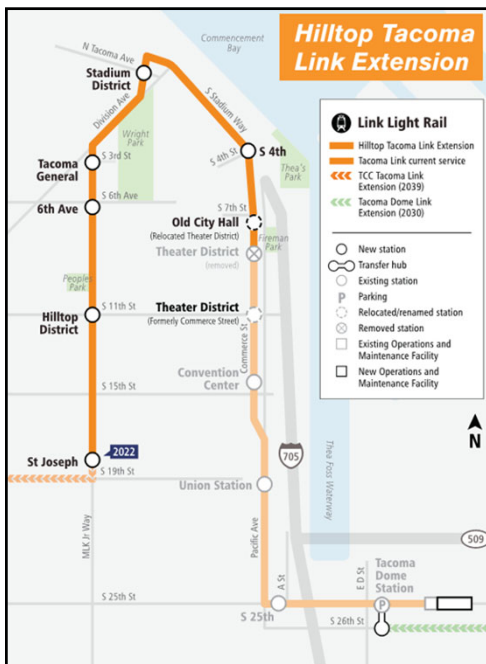


Sound Transit Update

Tacoma City Council Study Session

08/04/2020



Hilltop Tacoma Link Extension (HTLE)

Status

- 58 percent complete
- Recent budget increase of \$35.4M represents a 16 percent increase over the baseline budget of \$217.3M
- No change to May 2022 revenue service date

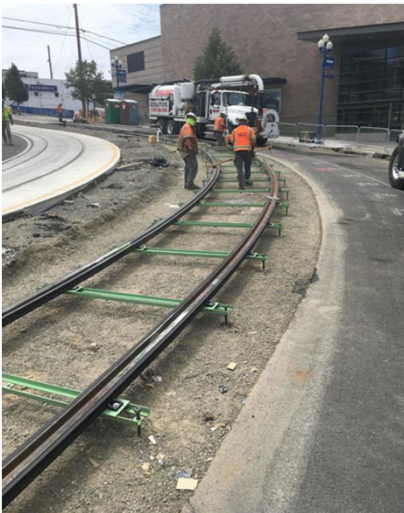
Work in Progress – Stadium Way



3

 SOUNDTRANSIT

Work in Progress – Stadium District



4

 SOUNDTRANSIT

Work in Progress - Hilltop



5



Community Outreach

[illegible]

The screenshot shows a YouTube video player interface. At the top, there is a search bar with the text "Search" and a magnifying glass icon. To the right of the search bar are navigation links: "Lit", "Home", "Find Friends", and "Create". Below these links is a horizontal row of six video thumbnails. The thumbnails depict various scenes: a group of people in a bicycle shop, a man in a blue shirt and a woman in a black shirt in a restaurant, a man in a blue shirt and a woman in a black shirt in a studio, a man in a blue shirt and a woman in a black shirt in a restaurant, a man in a blue shirt and a woman in a black shirt in a studio, and a man in a blue shirt and a woman in a black shirt in a restaurant. A large play button is centered over the middle of the thumbnails. At the bottom of the player, there is a progress bar and a timestamp "4:01 / 11:11".



Hilltop Tacoma Link Extension
Opening 2022

Night-time work at Division Avenue and N. J. St. this week

To minimize impacts to businesses, crews will install underground utilities in the N. J St./N. 2nd St. and Division Ave. intersection during the night from May 26 – 30, 7 p.m. to 7 a.m.



6



Loyal to the Local

Gas Pump Toppers

News Tribune Digital Ads

Pandora

OVER
6.5 MILLION
IMPRESSIONS
IN 2020

Tacoma Dome Ads

Facebook Ads

Tacoma Link Channel Cards

Space Works Art Installations

Train Wrap

7

SOUNDTRANSIT

Tacoma Dome Link Extension (TDLE)

- 10 miles
- 4 stations
- 1 river crossing

Link light rail

Federal Way-Fife-Tacoma (2030)

Tacoma Dome Link Extension

- Route alternative
- Station alternative

Other rail service

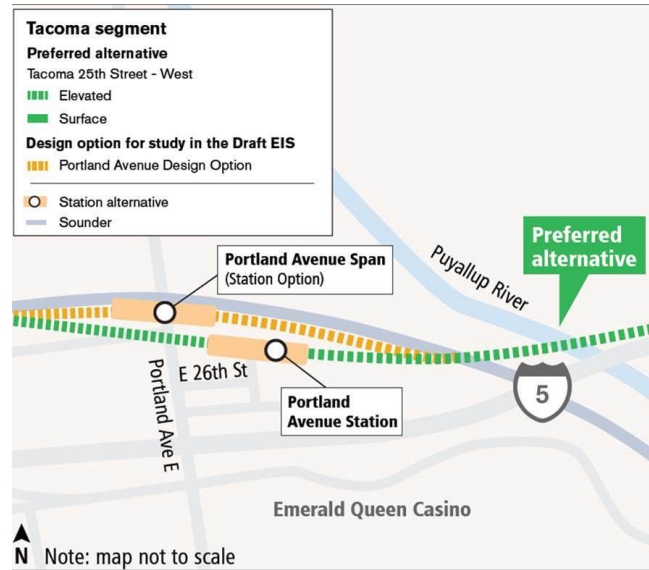
- Angle Lake - Federal Way (2024)
- Tacoma Dome - Theater District (in service)
- Theater District - St.Joseph (2020)
- Southern South Line (in service)
- Existing station

8

SOUNDTRANSIT

Portland Avenue Station: Overview

- Puyallup River light rail only bridge crossing 2 options
- Board direction to evaluate a pedestrian bridge over I-5
- Agreement with WSDOT to allow for widening of I-5 underpass sidewalk
- Non-motorized and transit access to station

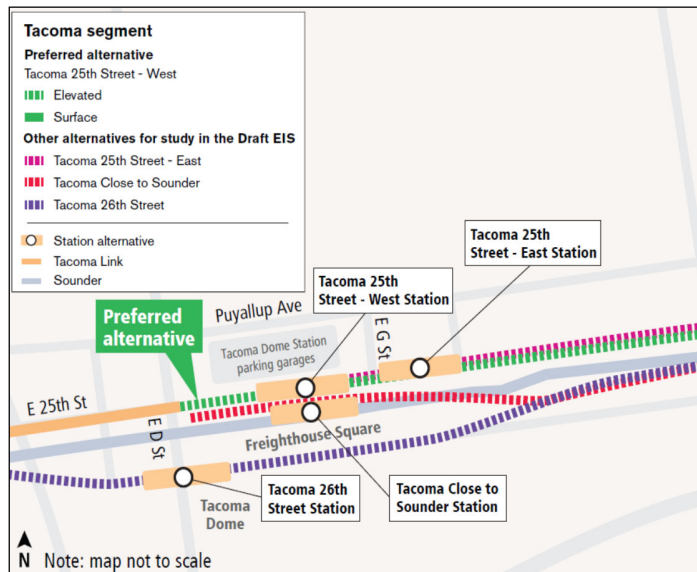


9

SOUNDTRANSIT

Tacoma Dome Station: Overview

- Four station location alternatives
- TD 26th Station - shifted to span East D St
- Pedestrian and bike bridge options for all station alternatives
- Non-motorized and transit access to station

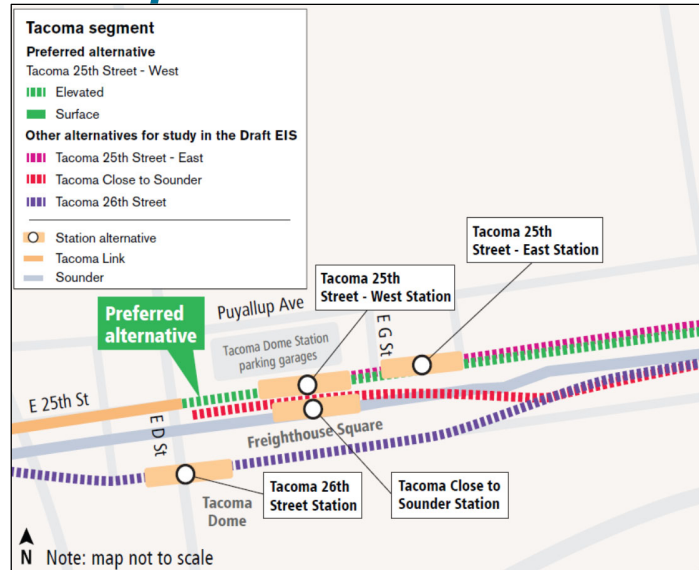


10

SOUNDTRANSIT

Close to Sounder Station option

- Developed alignment and station alternative at Board's direction
- Alignment runs next to Sounder Corridor
- Requires removing most of Freighthouse Sq. Possible preservation of area west of Sounder & Amtrak
- Evaluating opportunities for non-transit commercial uses under station



11

Upcoming Fall Outreach

- Station site design open house
 - Design refinements
 - Transit & non-motorized station access
- Phone follow-ups
- Briefings to community groups and property owners



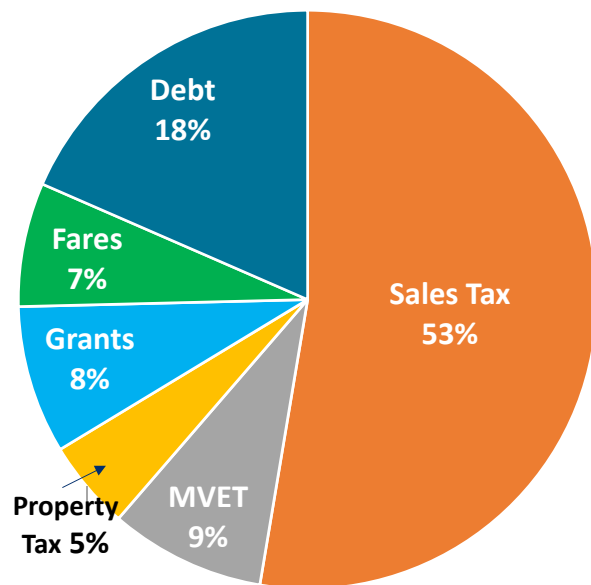
12

• *Realigning expansion plans*

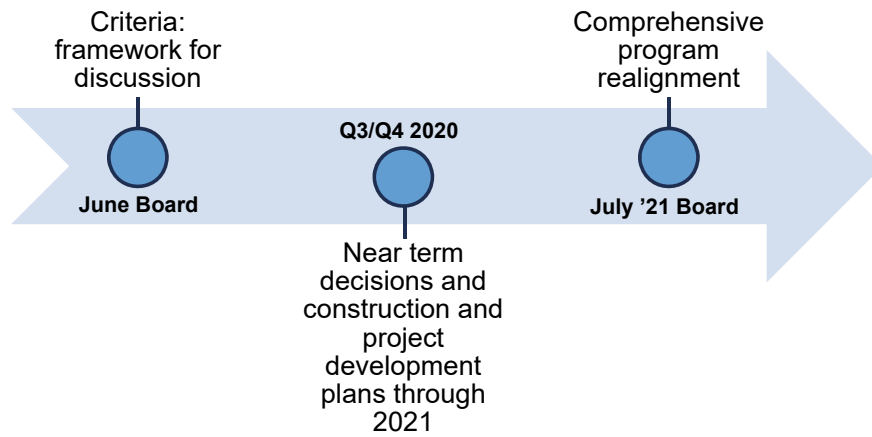


Revenue sources

- Tax revenues fund 66%.
- Debt funds 18%.
- Fares fund 7%.



Realignment process timeline



15



Thank you.



 soundtransit.org

