

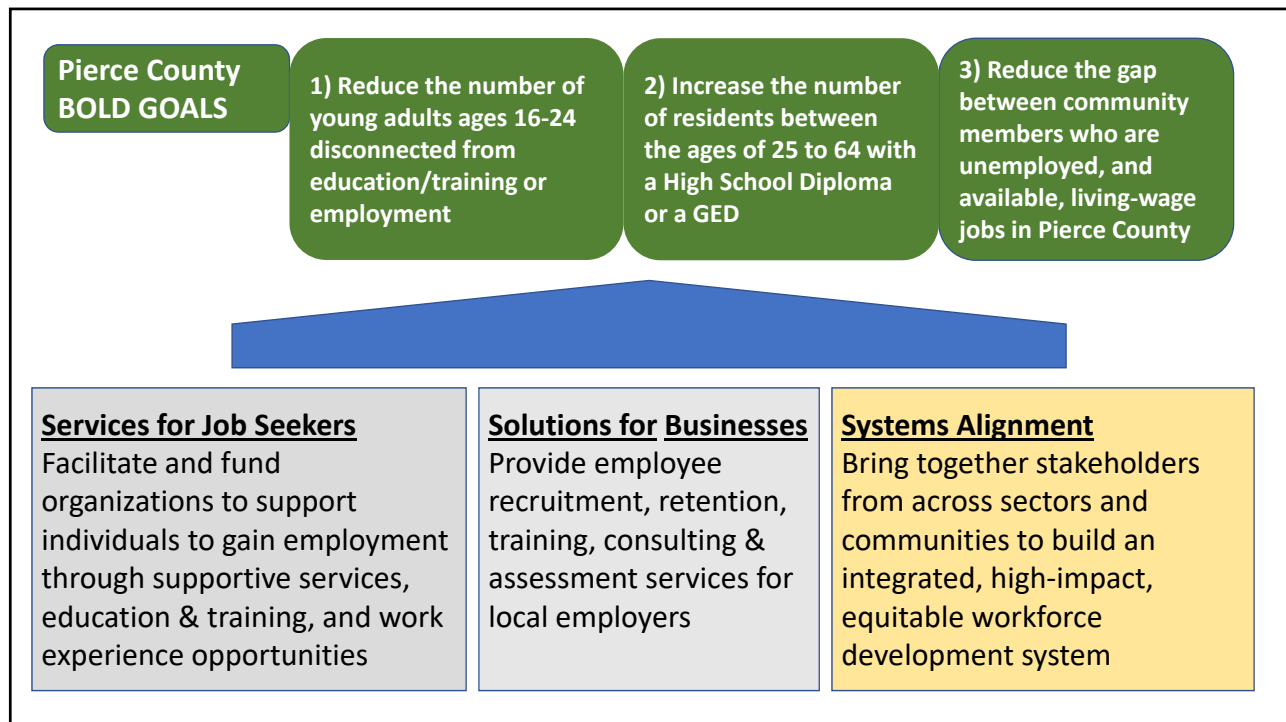


**Pierce County
BOLD GOALS**

1) Reduce the number of young adults ages 16-24 disconnected from education/training or employment

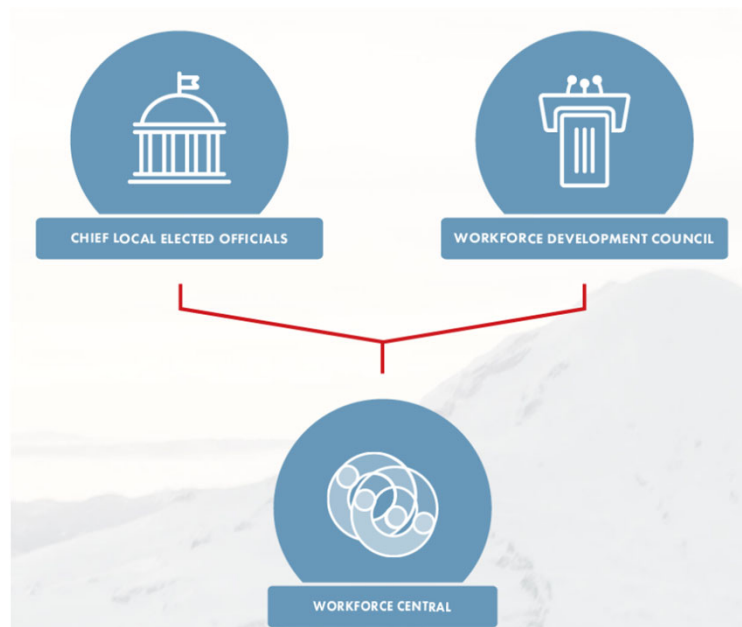
2) Increase the number of residents between the ages of 25 to 64 with a High School Diploma or a GED

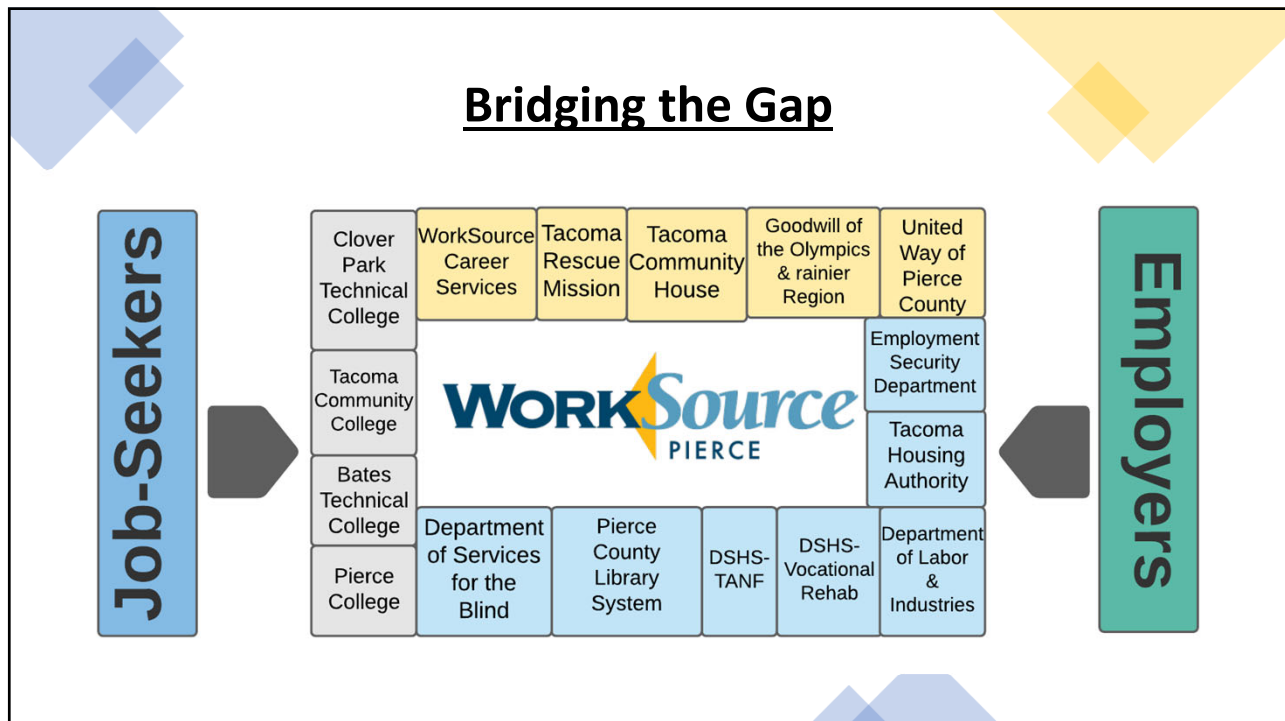
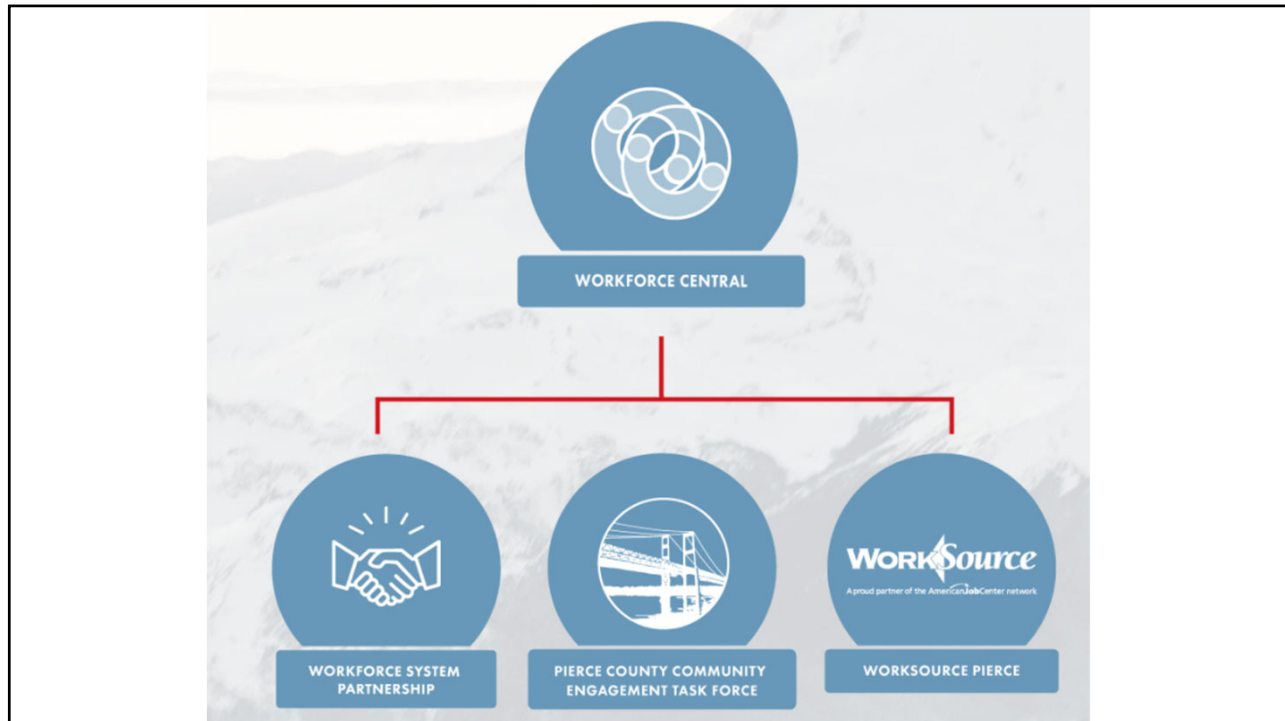
3) Reduce the gap between community members who are unemployed, and available, living-wage jobs in Pierce County



Mission

WorkForce Central carries out the vision of the Chief Local Elected Officials and the Pierce County Workforce Development Council by coordinating, administering and advancing the workforce development system, known as WorkSource Pierce.

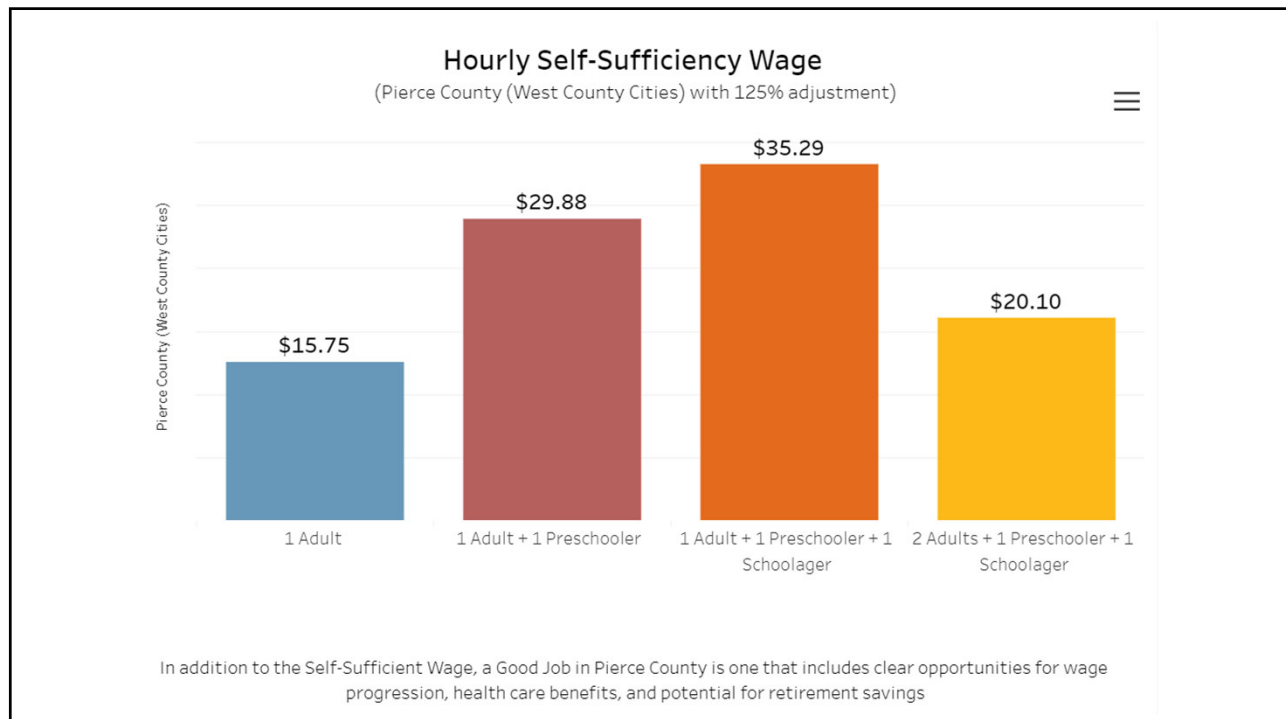




WHO

Communities facing systemic barriers to employment, including but not limited to:

- Dislocated workers
- Young people who are disconnected from education and employment
- Individuals with disabilities
- Veterans & eligible spouses
- Individuals with connections to the justice system
- Individuals experiencing poverty and/or homelessness
- Young people and adults with basic skills deficiencies



City of Tacoma Alignment Opportunities

- 1) Summer Jobs 253
 - Support and fund slots for youth currently disconnected from school
 - Connect all students to WorkSource Pierce system
- 2) Formal Commitment to “Good Jobs”
- 3) Responsive Cohort Trainings-TTEP Model
 - Support and fund cohorts
 - Recruit and connect individuals from WorkSource System to TTEP opportunities
 - Connect TTEP participants to WorkSource system for pathway to gainful employment
- 4) Adult Basic Education
 - Create pathway for adults engaged in ABE through WorkSource navigator to TTEP
- 5) Apprenticeship Support Mechanism
 - Build capacity to support businesses to develop robust pre-apprenticeship and apprenticeship opportunities



Katie Condit, CEO

kcondit@workforce-central.org

253-495-8515