

# ***Sound Transit Update***

*Tacoma City Council Study Session  
March 30th, 2021*



## *Agenda overview*

- Welcome – Andrew Austin
- Realignment update – Peter Rogoff
- Tacoma Dome Link Extension – Sue Comis
- Hilltop Tacoma Link Extension construction update – Madeleine Greathouse
- Additional project updates: OMF South, South Tacoma Sounder, Point Defiance Bypass – Andrew Austin
- Questions and discussion

# *Realigning expansion plans*



# *Financial changes*

*Current 25-year capital program runs 2016-2041*

- **Lower Revenue:** Lower sales, motor vehicle excise, and rental car taxes due to recession.
- **Higher Costs:** Construction costs remain at record levels due to continued growth in property values and hot construction market.

# ***Financial changes through 2041***

*Current 25-year capital program runs 2016-2041*

- **Revenue:** \$6.1 billion lower.
- **Costs:** \$12.3 billion higher. in estimate cost increases.
- **Offsets:** \$6.9 billion in new debt, higher grants and other revenue.
- **Overall:** \$11.5 billion affordability gap.

## ***Realignment tools available to Sound Transit***

- **Cutting costs** through reduced project scope, suspending or canceling projects, etc.
- **Raising new revenues** through issuing higher debt or seeking additional state or federal funding.
- **Delaying or phasing projects** to spread costs over time and keep total agency debt within current legal limits.

# Next steps

## *Anticipated realignment work through July*

February	Discuss realignment approaches.
March	Define approaches for public engagement.
April	Seek public feedback and discuss cost review results.
May	Discuss public feedback and Board priorities.
June	Develop realignment plan(s).
July	Adopt realignment plan(s).

# ***Tacoma Dome Link Extension Project Update***



# Tacoma Dome Link Extension (TDLE)

- 10 miles
- 4 stations
- 1 river crossing

■ Preferred Alternative  
■ Design options  
■ Other Draft EIS alternatives

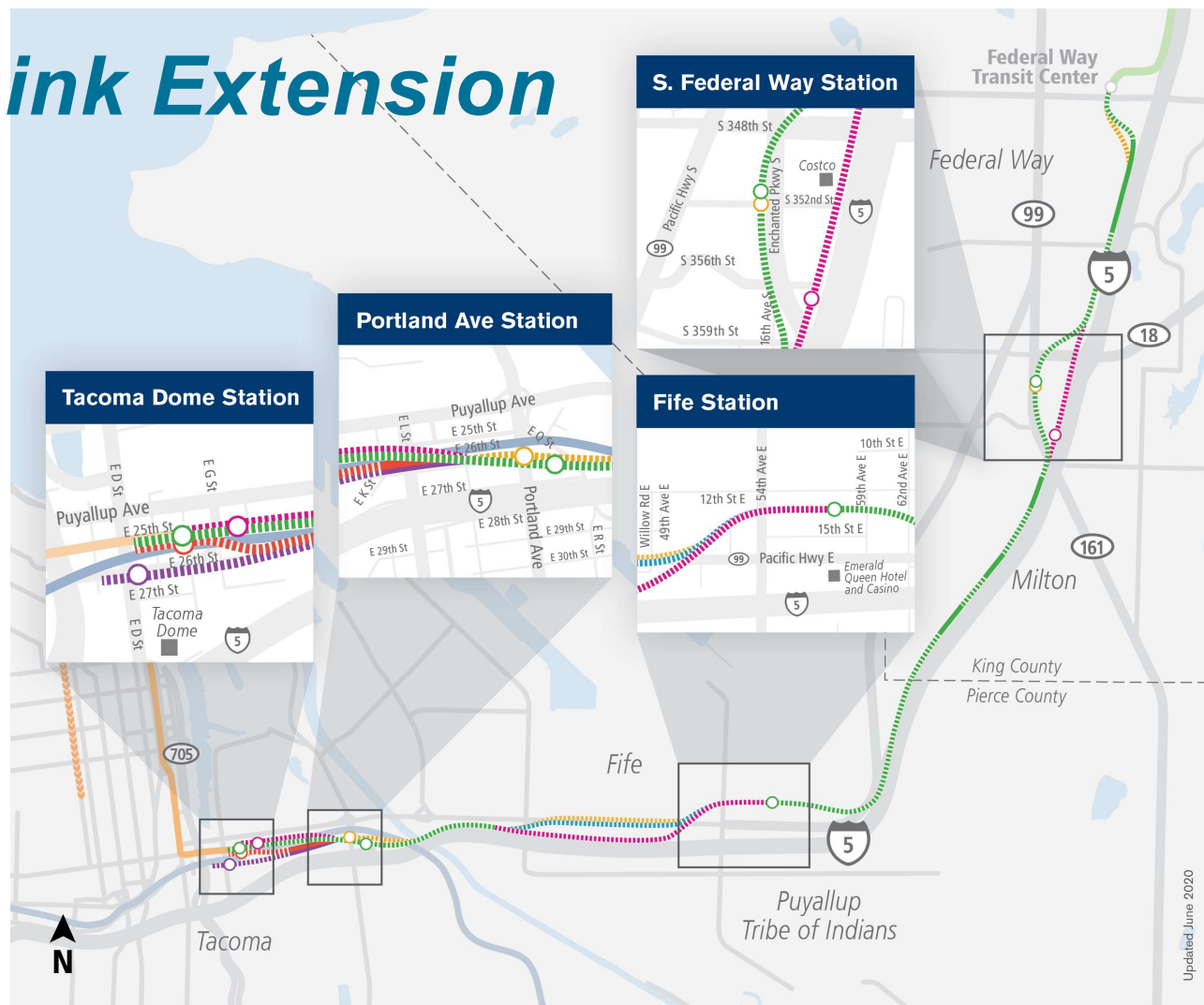
## Route profiles

▬▬▬ Elevated    ▬ Surface

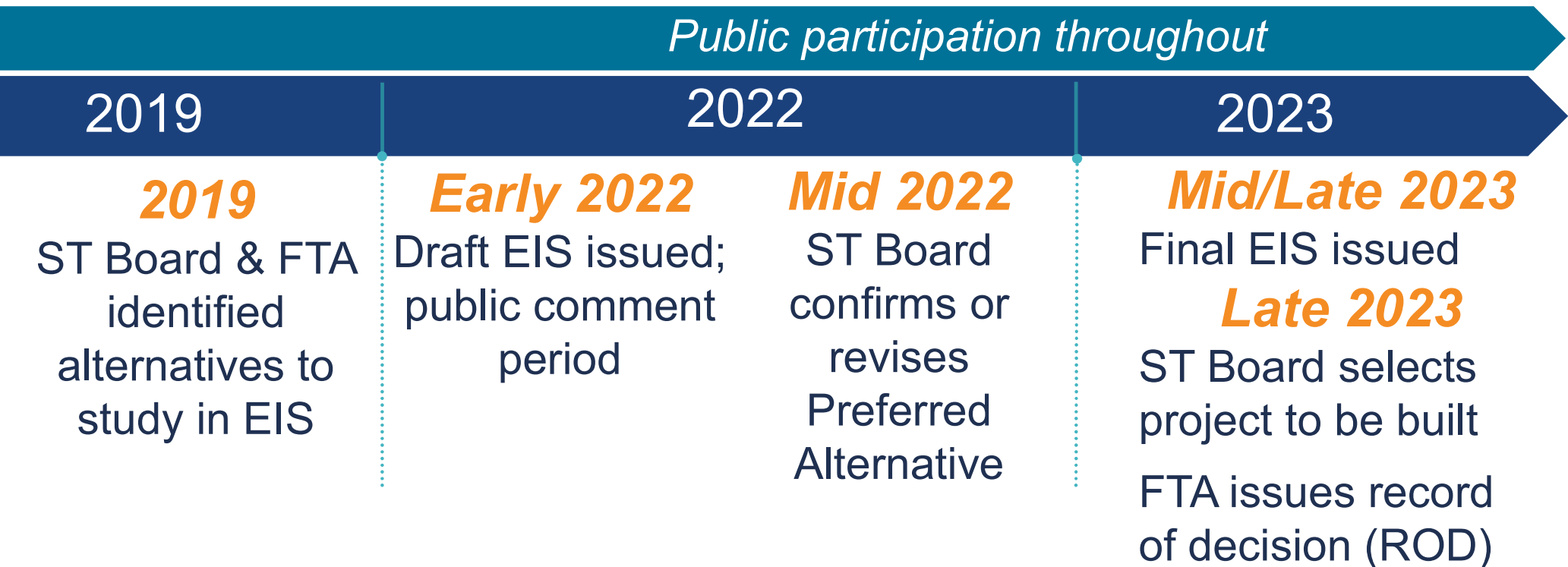
○ Station alternatives

## Other rail service

▬ Angle Lake–Federal Way (2024)  
▬ Sounder South: Lakewood–Seattle (in service)  
▬ Tacoma Dome–Theater District (in service)  
▬▬▬ Theater District–St Joseph (2022)  
○ Existing station



# TDLE Environmental Review Timeline\*



**\*Sound Transit Board decisions on realignment influenced by COVID -19 and increased estimates may change these dates**

## Fall 2020 outreach

- View station design refinements
- Provide feedback on pedestrian/bike projects
- Online open house ran from Sept. 29 to Nov. 2
- Translated in Spanish, Vietnamese, and Korean
- 3,395 unique visitors to the site
- Held 10 community briefings, with 706 participants
- Website in English, Vietnamese, Spanish and Korean

# ***What We Heard from Community— Portland Avenue***

- ***Prioritize connections to south of I-5***
- ***Coordinate with Tribe on pedestrian and bike connections to Casino***
- ***Concern that TOD potential is limited***
- ***Span station preferred for easier access***



# *What We Heard from Community— Tacoma Dome*

- *Streamline connections between transit modes*
- *Interest in TOD*
- *Interest in bike lanes and covered walks*
- *Need more Kiss-and-Ride*





# Next Steps

## *Community Engagement*

- Individual briefings on request

## *Station Access*

- Evaluating ped/bike projects on 6 criteria
- Draft List to be included in DEIS
- Final decision by ST Board

## *Station Design*

- Consider feedback as design advances after DEIS



***Hilltop Tacoma Link  
Extension Construction  
Update***



# Hilltop Tacoma Link Extension (HTLE)

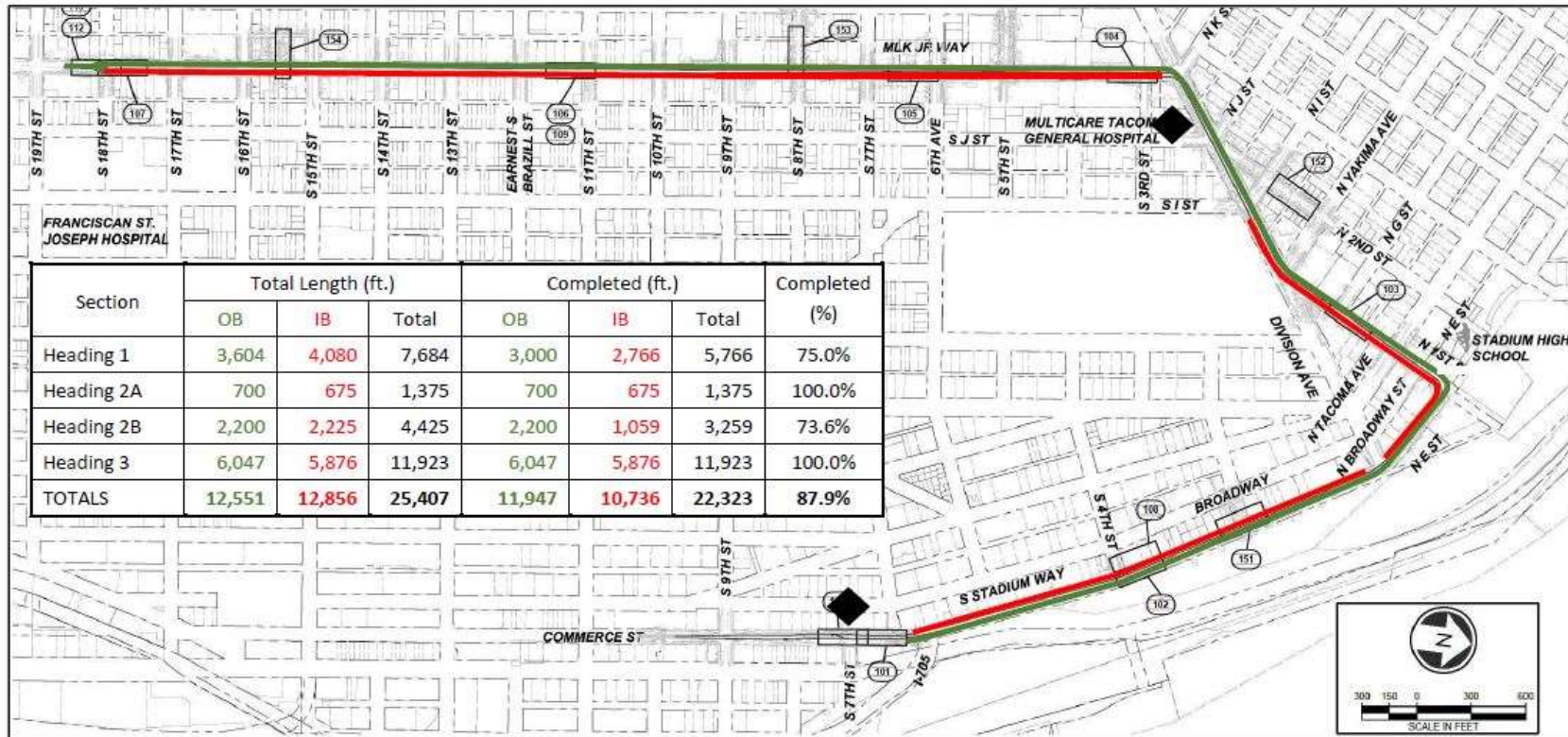
## Status

- 75 percent complete overall
- Planning for May Quantitative Risk Assessment
- Rail activation activities underway
- Early turnover of OMF bldg.

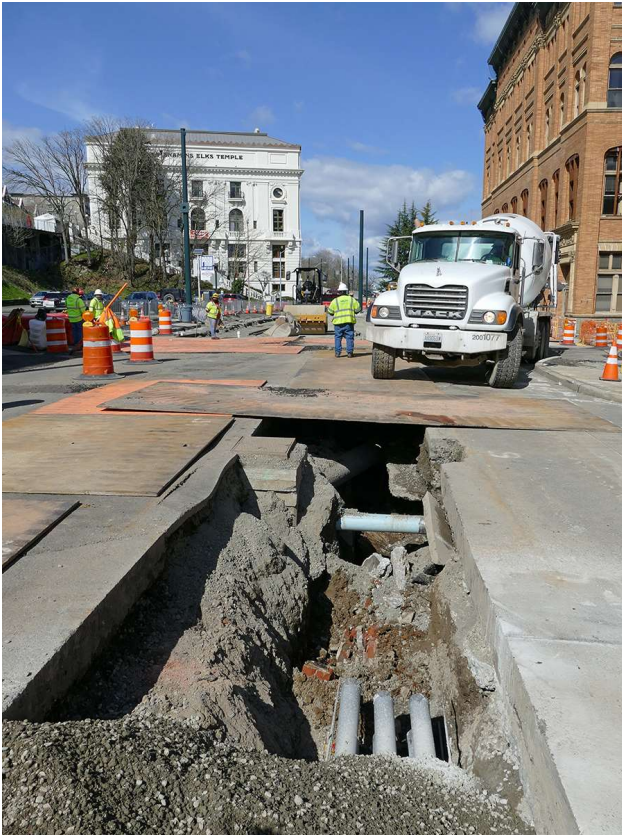


# Hilltop Tacoma Link Extension (HTLE)

## Status of Rail Work



## *Work in Progress – Stadium Way*





# *Work in Progress – Stadium District*



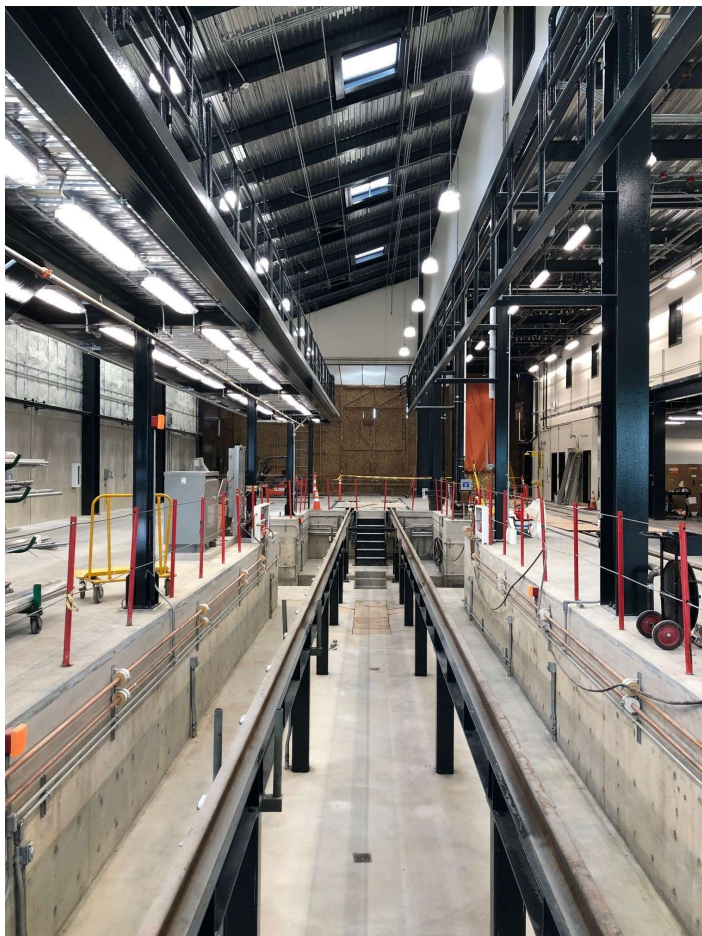


# *Work in Progress - Hilltop*





## *Work in Progress - OMF*





# Community Outreach



Installing track on Commerce St. from I-705 to the crosswalk north of Theater District Station starts in early March. Commerce St. closed in both directions in this area for about one month.

Crews will start the track installation on Commerce Street from I-705 to the crosswalk north of the Theater District Station. This work will start as soon as Tuesday, March 2 and last about one month. During this time, Commerce Street will be closed in both directions from I-705 to the crosswalk north of the Theater District Station. From I-705, please follow the detour north on Stadium Way to Broadway, Tacoma Avenue, or St. Helens, or take an earlier east City Center exit -- thank you.



During this time, crews will install two sets of track and crosswalks.

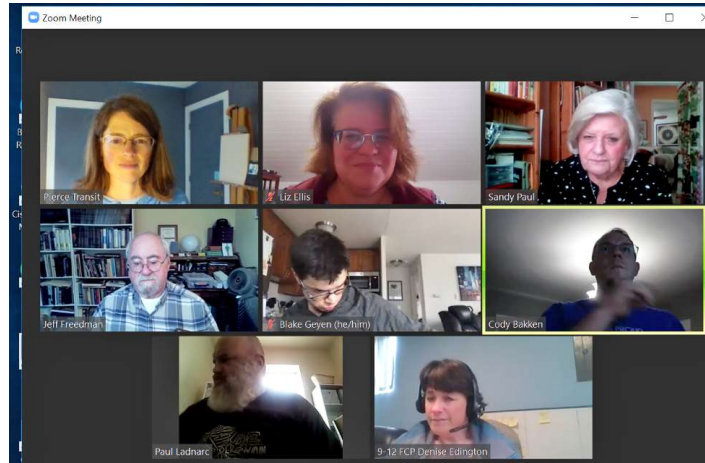
**Sound Transit**  
February 3 · 🌐

Crews are working hard on the track installation on Division Avenue near Wright Park -- this morning they poured concrete around the rails! Crews also are installing a new triangle at N. 1st/Yakima and Division. Looks great -- thank you! #StadiumDistrict



👍👍👍 34

46 Shares Seen by 107

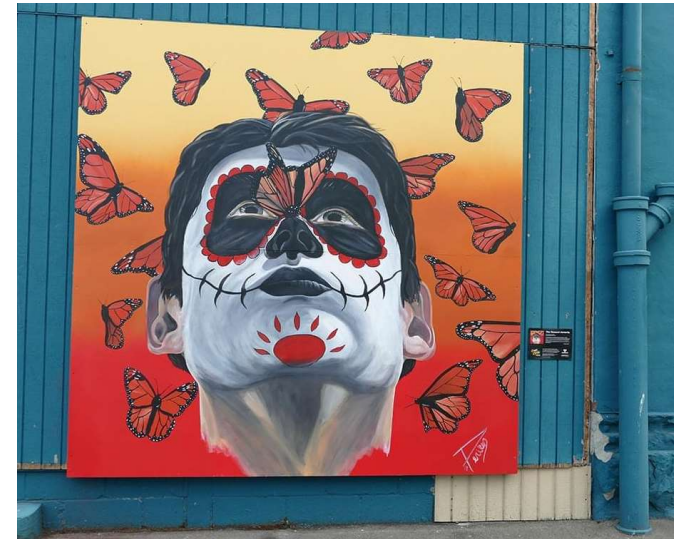


**Martin Luther King Jr. Way to open to two-way traffic between 6th Avenue and S. 10th Street on March 19**





# Loyal to the Local

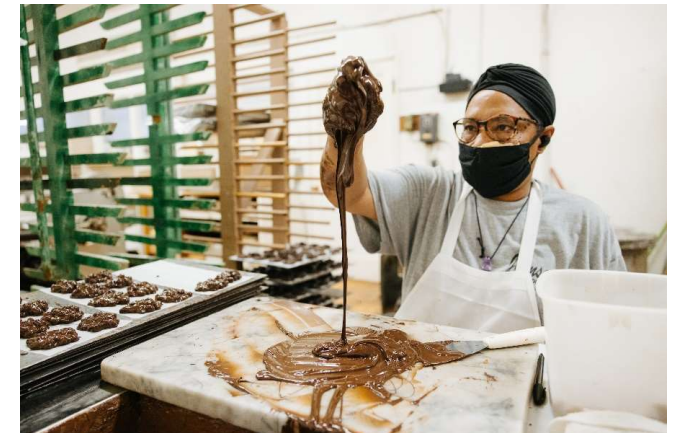


<  **Sound Transit**  
Sponsored •  ...

Food so good there are lines are out the door. At the Fish House Café you'll find everything from their signature fried fish, to chicken and Philly Cheese Steak sandwiches. Find out more about Tacoma Hilltop/Stadium businesses: <https://bit.ly/2Ozcdy7>



SOUNDTRANSIT.ORG  
**Be Loyal to the Local**  
Tacoma businesses open during constructi... [Learn More](#)



# ***Operations and Maintenance Facility South***

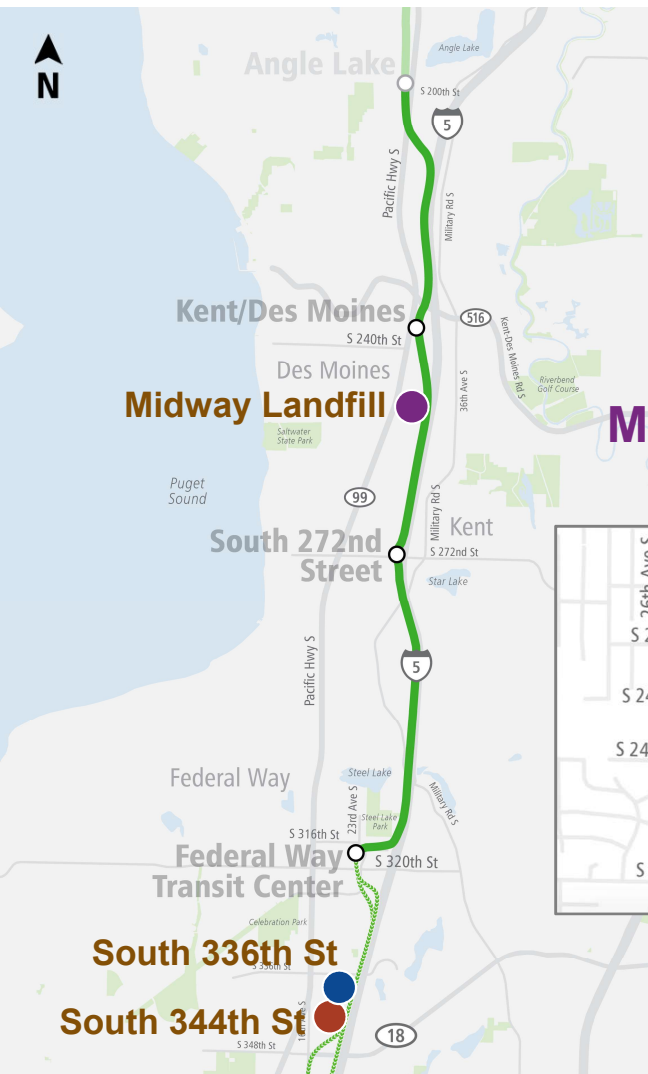




# ST Operations and Maintenance Facilities

## Siting the OMF South

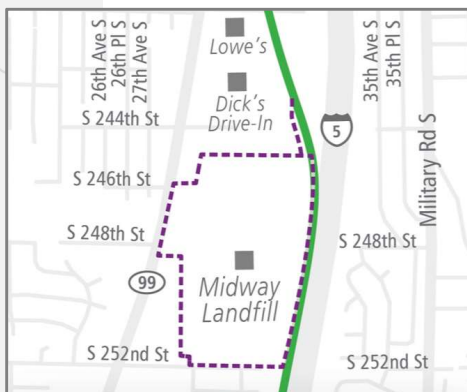
- One of four OMFs planned for the region
- Storage for 144 light rail vehicles
- Location and size supports light rail expansion in multiple corridors including Tacoma Dome Link Extension
- Strategically located in the South Corridor to help keep the entire Link Light Rail system functioning



# OMF South

*Evaluating three sites in the Draft EIS*

## Midway Landfill Alternative



## South 336th Street Alternative



## South 344th Street Alternative



# Options to Participate and Comment

- **Online open house and comment form:** [omfsouth.participate.online](http://omfsouth.participate.online)
- **Online public meetings and hearings:** March 24 & March 30
- **Email:** [OMFSouthDEIS@soundtransit.org](mailto:OMFSouthDEIS@soundtransit.org)
- **Voicemail:** 206-257-2135
- **Mail comment to:**  
OMF South Project  
c/o Hussein Rehmat, Environmental Planner  
Sound Transit  
401 S. Jackson St. Seattle, WA 98104

# ***South Tacoma Sounder Station Access Improvements***

# South Tacoma Station Access Improvements Project

- Currently identifying access improvements to the station
- Considers local planning efforts
- Possible strategies for achieving these improvements:
  - Pedestrian & Bike Improvements
  - Bus Speed and Reliability
  - Expanded drop-off
  - Parking improvements
- Financial Plan Estimate \$45M (2019\$) (*includes planning, design, right of way, construction and contingencies*)\*



# ***Project Activities & Milestones***

## ***Spring 2021***

- Identifying potential improvements
- Public engagement round 1

## ***Summer 2021***

- Evaluate potential improvements

## ***Fall 2021***

- Public engagement round 2
- Identify preferred improvements for consideration by ST Board

## ***Ongoing***

- Technical Advisory Group meetings

# External Engagement

- Technical Advisory Group – includes City staff, meets monthly to collaborate
- Online Open Houses (Spring & Fall)
  - Solicit input on goals, issues (spring)
  - Solicit feedback on alternative solutions and evaluation results (fall)
  - Ongoing (virtual) engagement with community-based organizations and other stakeholders
- Return to in-person events when allowed



# ***Point Defiance Bypass***



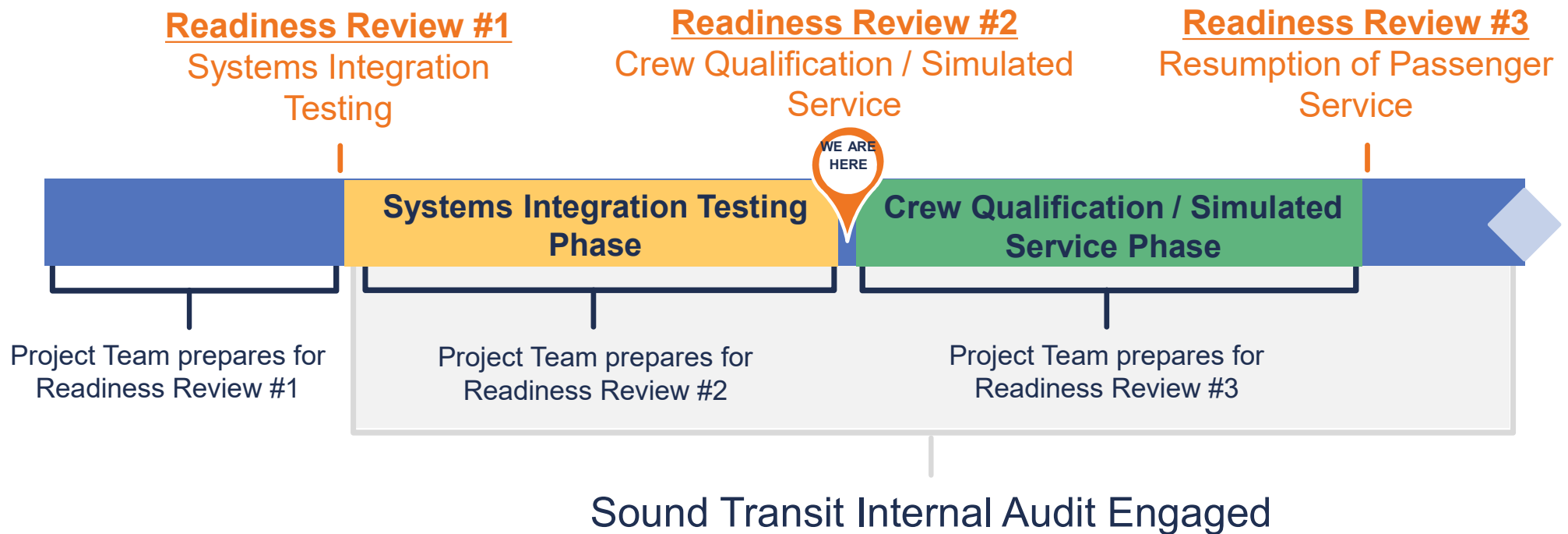
## Why we are here

- *Overview of project phases of the PDB Resumption of Passenger Service project*
- *General project update*



# Project Timeline

## Overview



*Thank you.*



 *soundtransit.org*

