




OUTDOOR DINING PROGRAM

Economic Development Committee
Public Works Department

November 9, 2021

1




OVERVIEW

- Background
- Program Considerations
- Community Engagement
- Timeline

STAYING SAFE COVID-19 (coronavirus)


To keep our staff and our customers safe, we ask that you...

Wear a face mask




Please help keep everyone safe; wear a cloth face covering while shopping.

Stay 6 feet apart



Please try to stay at least 6 feet away from other people in the store.

We are now serving ___ people at a time in our store.



To ensure proper physical distancing and comply with state guidelines, we are operating at reduced capacity.

Spread the Facts coronavirus.wa.gov

2

2

BACKGROUND



- Stay Safe, Stay Home Order – Emergency Declaration
- Resolution 40783
 - Create one point of entry for City permitting of all outdoor dining options
 - Reviewing restrictions on sidewalk availability (sidewalk widths, slopes, locations)
 - Consideration of how to reduce startup costs



3

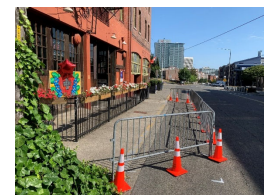
3

PROGRAM CONSIDERATIONS



Program Mission and Approach

- Activate public space
- Support local businesses and promote economic vitality
- Foster positive community interaction
- Encourage walking, biking, micromobility, and the use of transit
- Provide safe, comfortable, and useful public spaces within the right-of-way
- Support the goals and policies of the Transportation Master Plan



4

4

SIDEWALK/AMENITY PROGRAM CONSIDERATIONS



- Right Size
 - Maintain minimum sidewalk widths consistent with the One Tacoma Plan (Transportation Master Plan, Subarea Plans)
 - Not wider than the pedestrian clear zone
- Right Place
 - Clear of intersections, utilities, curb ramps, signs
 - Not in single family zoning
- Right Design
 - Barriers should be ADA detectable
 - Spaces should be accessible
 - Unlimited on corridors

5

5

CURBSIDE PROGRAM CONSIDERATIONS



- Right Size
 - 1-2 stalls parallel or 1-3 stalls angle
- Right Place
 - Roadway characteristics (25 mph streets, visibility at intersections)
 - Balance other ROW needs (bike corrals, scooter parking, load zones, ADA or EV parking, urban forestry, future bike or pedestrian facilities)
 - Avoid obstructing underground utility access/vaults
 - Open for public use during non-business hours
- Right Design
 - Inclusive, accessible, safe, and aesthetically-pleasing (Minimum features or design – bike/scooter parking, landscaping)
 - Easy operation and maintenance
 - Limited number per block



6

6

PROGRAM FUNDING CONSIDERATIONS

- ARPA Restaurant Retrofit Rebate
 - \$100,000 in rebates for expenses incurred during Pilot Outdoor Eateries Program
 - 9 Eligible Restaurants Participated in Pilot Program
- \$25,500 City fabricated and installed



7

7

COMMUNITY ENGAGEMENT

Tacoma Area
Commission on
Disabilities

Transportation
Commission

Downtown
Tacoma
Partnership


Parking
Technical
Advisory Group


Cross District
Association

- Accessibility to and through the space
- Maximize sidewalk spaces in high pedestrian areas (tree wells and planting strips are not acceptable walking surfaces)
- Provide cane detectable barriers, not surprise intrusions
- What is the limit per block or area?
- Allow for weather protection
- One stop permit – sidewalk café, curbside café
- Assistance with construction

8

8





<ul style="list-style-type: none"> November 9, 2021 Fall 2021 October 2022 October 1, 2022 	<p>EDC Council Committee Presentation</p> <p>ARPA Reimbursement Grant Program</p> <p>Biennial Budget Request for Program Funding</p> <p>End of Temporary Pilot Programs*</p>
--	--

*Dependent on Emergency Declaration

9

9



OUTDOOR DINING PROGRAM

Economic Development Committee
Public Works Department

November 9, 2021

10

PROGRAMS



	Curbside (Temporary)
Applications	9 Applications
Approved	Incline Cider, Dystopian Brewery, Wooden City, Tibbits Fernhill Café, Dirty Oscar's Annex, The Mix, Camp Bar, McMenamin's, Cider & Cedar
Denied	Odd Otter (taxi & loading zone)
Cancelled	The Swiss (closed), KVL T Mead (moved), Shakabrah (sidewalk only)

11