



Automated Enforcement Expansion Briefing

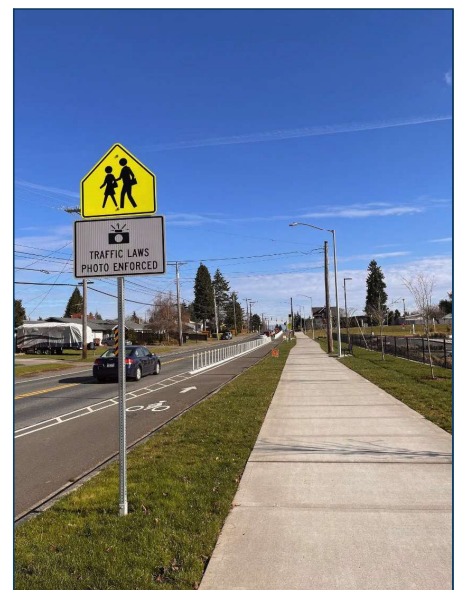
Public Works Department
City Council Study Session
May 5, 2026
Item 2

AUTOMATED ENFORCEMENT OVERVIEW

Presentation Type:
Information Only

Purpose:

- Background
- First Phase of Expansion
- Next Steps




AUTOMATED ENFORCEMENT LEGISLATION

Effective 2024, House Bill (HB) 2384 expanded the use and guidance of automated enforcement cameras

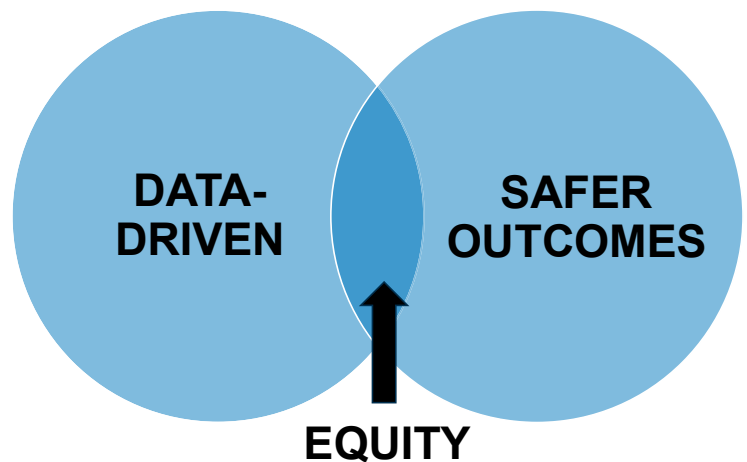
Key provisions included:

- Updated penalties
- Increased transparency
- Revenue restricted
- Given to state after four years

Authorized Automated Enforcement Locations	
	School Zones
	Park Zones
	Hospital Zones
	High Speed and Crash Locations
	Arterial intersections

AUTOMATED ENFORCEMENT TASK FORCE

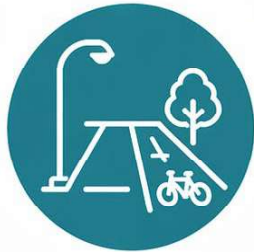
- Seven community members, along with staff from the Office of Equity and Human Rights, Public Works, and the Tacoma Police Department
- Strongly recommended a data-driven approach to site selection and clear, consistent communication to support transparency and build trust



AUTOMATED ENFORCEMENT GUIDING PRINCIPLES



Safety and Equity



Investment and Street Design



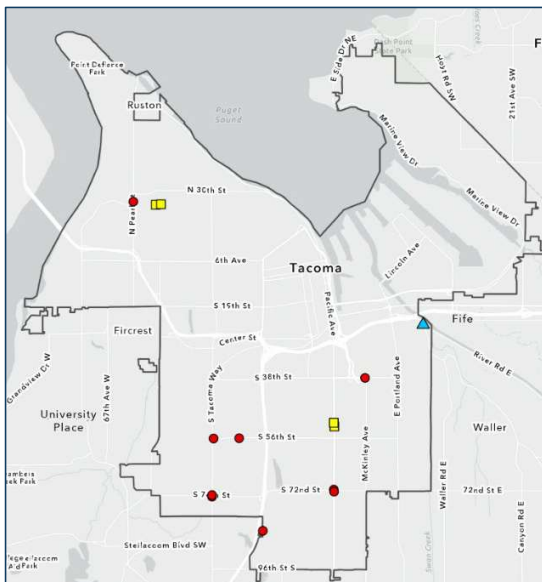
Transparency and Continuous Improvement



Education and Awareness



AUTOMATED ENFORCEMENT EXISTING PROGRAM

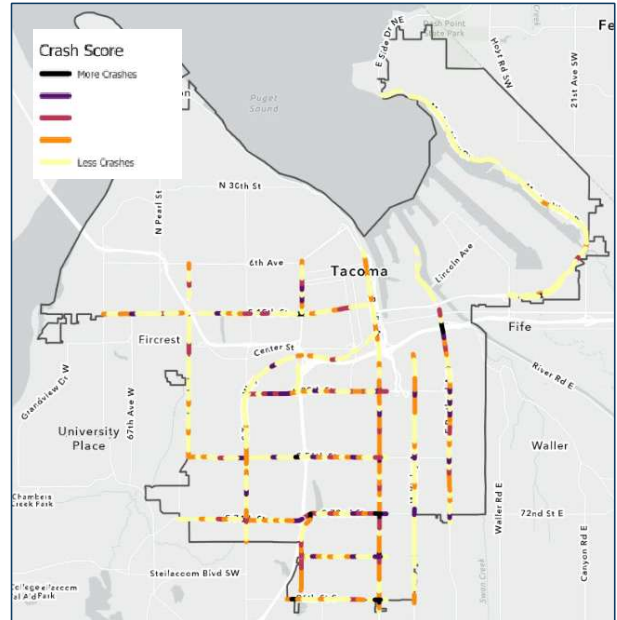


- Currently 14 cameras installed:
 - Speed (1) ▲
 - Red Light (9) ●
 - School Speed Zone (4) ■
- Focusing on speed cameras for first phase of expansion



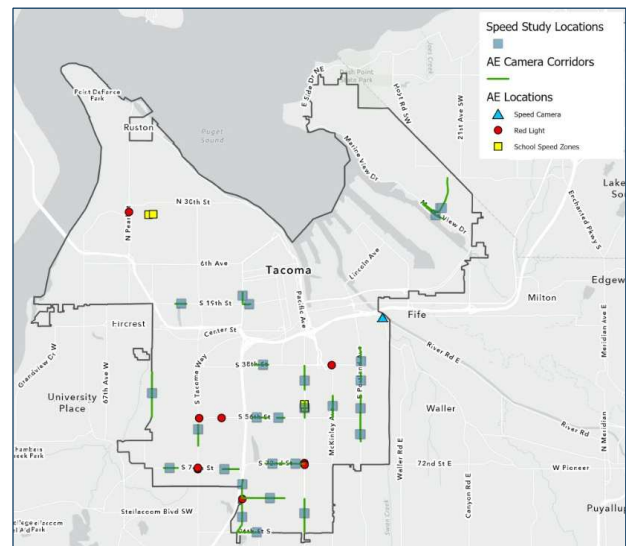
AUTOMATED ENFORCEMENT FIRST PHASE EXPANSION

- Identified top crash corridors
- Applied 3:1 crash scoring (KSI = 3 pts, Non-KSI = 1 pt)
- Mapped crash intensity per 1/10 mile



AUTOMATED ENFORCEMENT FIRST PHASE EXPANSION

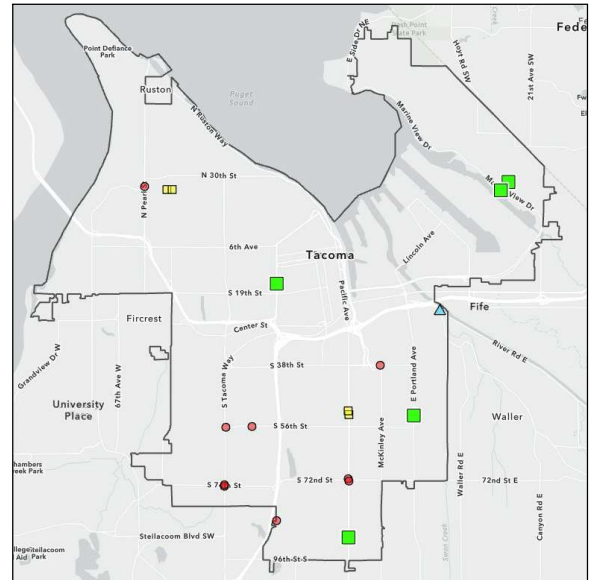
- Performed engineering analysis
 - Crash type
 - Free flow conditions
 - Land use and existing infrastructure
- Conducted speed studies
 - 24-hour speed and volume
- Prioritized locations by crashes and speed (6 MPH +)



AUTOMATED ENFORCEMENT FIRST PHASE EXPANSION

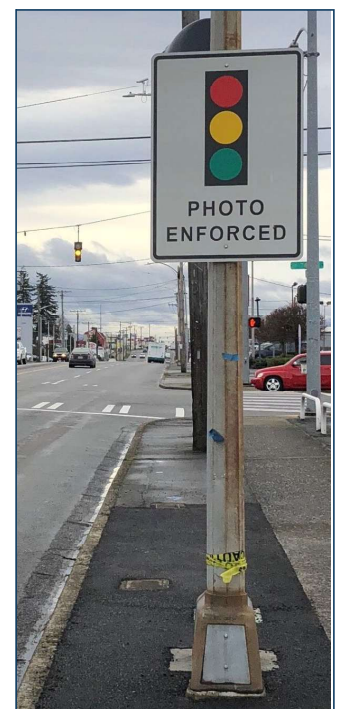
Five locations, eight speed cameras

- South Sprague Avenue: two cameras, one each direction
- Pacific Avenue: two cameras, one each direction
- SR-509: one camera, southbound direction
- Norpoint Way NE: one camera, uphill direction
- Portland Avenue: two cameras, one each direction
 - *School zone and speed camera*



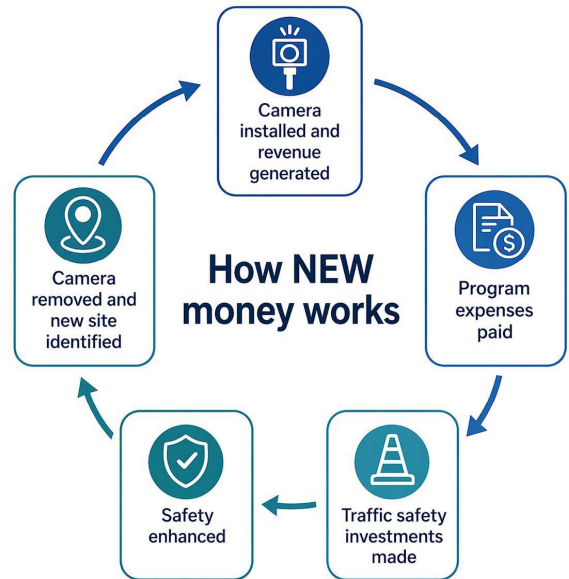
AUTOMATED ENFORCEMENT EDUCATION AND OUTREACH

- Speed limit signs installed on corridor
- Sign posted 30 days before activation
- Warnings issued for 30 days after activation
- Postcards mailed to residences within .5 mile radius
- Social media
- Press release
- Multilingual outreach and materials



AUTOMATED ENFORCEMENT REVENUE: NEW CAMERAS

- Operating and administration costs first: equipment maintenance, infraction processing, vendor services
- All remaining funds may ONLY be used for traffic safety activities related to construction and preservation projects such as complete streets implementation, speed-reducing road design, safety improvements for active transportation, accessibility improvements



AUTOMATED ENFORCEMENT TOP CONCERNS

- **Data Privacy:** No images of people; used only for the specific traffic violation captured; deleted when no longer needed
- **Money Grab:** Amount generated not part of decision-making process; revenue supports program costs with remaining funds reinvested into traffic safety
- **Replacing In-Person Enforcement:** Complements – not replaces – traditional enforcement; expands coverage of support
- **Effectiveness:** Proven to reduce speeding; improves safety 24 hours a day, 7 days a week

88% of Tacoma drivers who receive a ticket do not receive a second one



AUTOMATED ENFORCEMENT TOP CONCERNS

Equity:

- Balancing greatest need while being cautious about saturation
- First month of activation is only warnings
- For qualifying individuals, first citation is 50% off
- Revenue reinvested into traffic safety improvements
- Conducted state-mandated equity analysis for each new location:
 - Accessibility
 - Livability
 - Education
 - Economics
 - Environmental Health

Less than 5% of citations go to residents of the immediate zip code



AUTOMATED ENFORCEMENT NEXT STEPS

- Phased approach to activation
- Conduct outreach prior to activating new camera
- Prepare for next phase of expansion
 - Speed cameras and/or school zone cameras

Number of citations issued over time





Automated Enforcement Expansion Briefing

Public Works Department
City Council Study Session
May 5, 2026
Item 2